

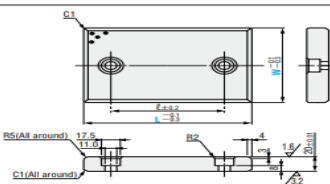
OIL-FREE SLIDE PLATES

— CAST 20mm TYPE • 2 BOLT HOLES / 3 BOLT HOLES / 4 BOLT HOLES —

— 2 bolt holes —
MWF W = 28 ~ 75
MWFT W = 100 ~ 150



RoHS



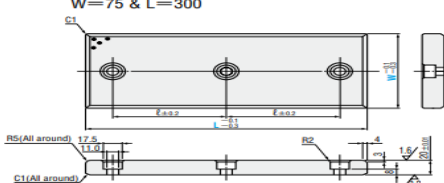
W = 75 & L = 300

※ For W=28 or 38, the R in the longer direction is R2.

— 3 bolt holes —
MWF W = 75 & L = 300



RoHS

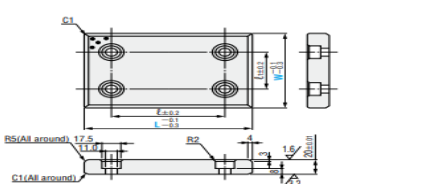


• Slide direction
 For W=28 or 38, slide direction is the longer direction (L) only.

— 4 bolt holes —
MWF W = 100 ~ 200



RoHS



• The use of initial break-in greasing will make the product more effective.

FC250 Special solid lubricant (embedded)

ℓ	Catalog No.	W	L	ℓ	Catalog No.	W	L		
45	MWF	28	75	50	MWFT	100	100		
50			100	75			125		
75			125	100			150		
100			150	125			200		
150			200	150			250		
200			250	200			300		
125		38	-300	75		50	125	150	125
45				75		100			150
50				100		125			200
75				125		150			250
100				150		200			300
150				200		250			350
200	48	-300	75	50	150	200	125		
125			75	100			150		
45			100	125			200		
50			125	150			250		
75			150	200			300		
100			200	250			350		
150	58	-300	75	50	200	250	125		
200			75	100			150		
125			100	125			200		
45			125	150			250		
50			150	200			300		
75			200	250			350		
100	75	-300	75	50	150	200	125		
125			75	100			150		
25			100	125			200		
50			125	150			250		
75			150	200			300		
100			200	250			350		
150	100	-300	75	50	200	250	125		
200			75	100			150		
125			100	125			200		
45			125	150			250		
50			150	200			300		
75			200	250			350		
100	150	-300	75	50	250	300	125		
125			75	100			150		
200			100	125			200		
150			125	150			250		
200			150	200			300		
250			200	250			350		
125	200	-300	75	50	300	350	125		
150			75	100			150		
200			100	125			200		
250			125	150			250		
300			150	200			300		
350			200	250			350		

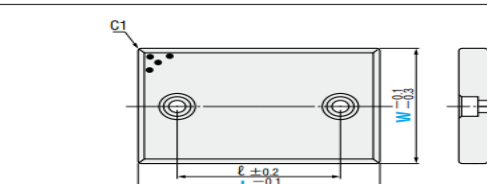
OIL-FREE SLIDE PLATES

— COPPER ALLOY 20mm TYPE • 2 BOLT HOLES / 4 BOLT HOLES —

— 2 bolt holes —
SEW W = 28 ~ 75
SEWT W = 100 ~ 150



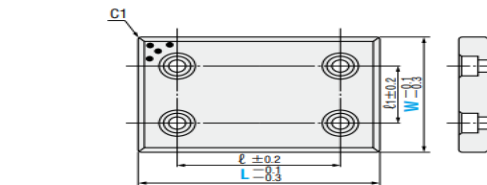
RoHS



※ For W=28 or 38, the R in the longer direction is R2.

— 4 bolt holes —
SEW W = 100 ~ 150

RoHS



• Slide direction
 For W=28 or 38, slide direction is the longer direction (L) only.

• The use of initial break-in greasing will make the product more effective.

Copper alloy Special solid lubricant (embedded)

ℓ	Catalog No.	W	L	ℓ	ℓ1	Catalog No.	W	L	
45	SEW	28	75	50	SEWT	100	100	100	
50			100	75				125	
75			125	100				150	
100			150	125				200	
150			200	150				250	
200			250	200				300	
125		38	-300	75		50	125	150	125
45				75		100			150
50				100		125			200
75				125		150			250
100				150		200			300
150				200		250			350
200	48	-300	75	50	150	200	125		
45			75	100			150		
50			100	125			200		
75			125	150			250		
100			150	200			300		
150			200	250			350		
200	58	-300	75	50	200	250	125		
45			75	100			150		
50			100	125			200		
75			125	150			250		
100			150	200			300		
150			200	250			350		
200	75	-300	75	50	250	300	125		
45			75	100			150		
50			100	125			200		
75			125	150			250		
100			150	200			300		
150			200	250			350		
200	100	-300	75	50	300	350	125		
45			75	100			150		
50			100	125			200		
75			125	150			250		
100			150	200			300		
150			200	250			350		
200	150	-300	75	50	350	400	125		
45			75	100			150		
50			100	125			200		
75			125	150			250		
100			150	200			300		
150			200	250			350		

Order Catalog No. W — L
 SEW 75 — 125
 SEWT 100 — 200

Days to Ship **Quotation**

Price **Quotation**

Shims for oil-free slide plates P.1142