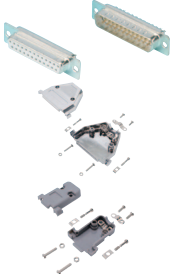


Information on Components Used

Connector / Hood

DSDJ / DSDU / PDDJ / PDDU
GLDJ / GLDU / GRPDJ / GRPDU
GRPDDN / GRPDDJ / GRPDDU



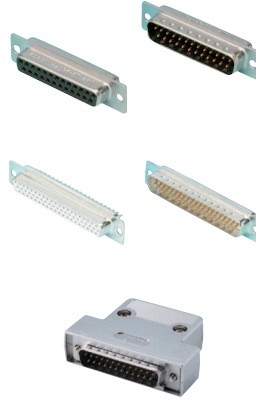
Connector	
Manufacturer	Misumi
Model Number	DB-**S*
More Information	OP.17

EMI Countermeasure Hood	
Manufacturer	Misumi
Model Number	MDA-**H-***
More Information	OP.30

Plastic Hood	
Manufacturer	Misumi
Model Number	RDA-**H-***
More Information	OP.30

* GRPDDN / GRPDDJ / GRPDDN have no hood

NEDJ / NEDJL / NEDU / NEDUL / SPEDJ / SPEDJL / SPEDU / SPEDUL
BDDN / BDDJ / BDDU (H15, 44 and 62-core use high-density connectors)



Connector	
Manufacturer	JAE
Model Number	D*-**F-N
Rated Current	5A
Rated Voltage	—
More Information	OP.16

High-Density Connector	
Manufacturer	Imported Product
Model Number	HD-**S*
Rated Current	5A
Rated Voltage	—
More Information	OP.21

Hood	
Manufacturer	JAE
Model Number	D*-C8-J**-F*1R
More Information	OP.29

* BDDN / BDDJ / BDDU have no hood

NA37DM



Connector	
Manufacturer	DDK
Model Number	17JE-13370-02-D1-A
Rated Current	5A
Rated Voltage	300 VAC
More Information	OP.18

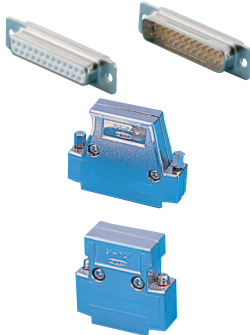
Hood	
Manufacturer	Misumi
Model Number	NAH-DSUB37-MM
More Information	Unlisted

FLOD



Connector	
Manufacturer	JAE
Model Number	D*SP-JB**
Rated Current	—
Rated Voltage	—
More Information	Unlisted

NDDJ / NDDU / GRNDJ / GRNDU /
GRNDDN / GRNDDJ / GRNDDU



Connector	
Manufacturer	DDK
Model Number	17JE-****-02-D1
Rated Current	5A
Rated Voltage	300 VAC
More Information	OP.18

Angle Hood	
Manufacturer	DDK
Model Number	17JE-**LH*-1*-CF
More Information	OP.31

Hood	
Manufacturer	DDK
Model Number	17JE-**H-1*-CF
More Information	OP.31

* GRNDDN / GRNDDJ / GRNDDU have no hood

FEMD



EMI Countermeasure Connector	
Manufacturer	JAE
Model Number	D*SP-JB**F
Rated Current	—
Rated Voltage	—
More Information	Unlisted

BHDJ / BHDJL / BHDU / BHDUL (H15 uses high-density connector)

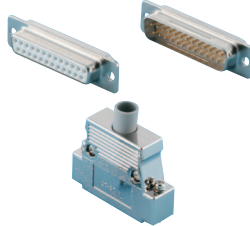


Connector	
Manufacturer	JAE
Model Number	D*-**F-N
Rated Current	5A
Rated Voltage	—
More Information	OP.16

High-Density Connector	
Manufacturer	Imported Product
Model Number	HD-**S*
Rated Current	5A
Rated Voltage	—
More Information	OP.21

Hood	
Manufacturer	DDK
Model Number	17JE-**H-1*-CF
More Information	OP.31

NSDJ / NSDU / BSDJ / BSDU / ZHDJ



Connector	
Manufacturer	Omron
Model Number	XM3*-**21
Rated Current	5A
Rated Voltage	300 VAC
More Information	OP.20

Hood	
Manufacturer	Omron
Model Number	XM2S-**1*
More Information	OP.33

Crimp Terminal



Y Type Crimp Terminals	
Manufacturer	Daido Solderless Terminal Mfg. Co.
Model Number	F0.3-3 Equivalent
Size	3.2mm
Outer Width	5.2mm
More Information	OP.468



Y Type Crimp Terminals	
Manufacturer	Daido Solderless Terminal Mfg. Co.
Model Number	F0.08-3 Equivalent
Size	3.2mm
Outer Width	5.2mm
More Information	OP.468



Round Type Crimp Terminals	
Manufacturer	Daido Solderless Terminal Mfg. Co.
Model Number	0.3-3 Equivalent
Size	3.2mm
Outer Width	5.2mm
More Information	OP.464

The Y type crimp terminals are for M3 screw terminal block. The crimp terminal used is changed according to the thickness of the cable used.

Information on Components Used

Multi-Core Cable

SB Cable



Manufacturer	Misumi
Model Number	SS30WS
Standard Acquired	ULAWM20276
Rated Temperature	0 ~ 80°C
Flame Retardance	VW-1SC
Bending Radius mm (Fixed Parts)	Finished Outer Diameter x 8
Bending Radius mm (Movable Parts)	—
More Information	OP.1339

KS Cable



Manufacturer	Misumi
Model Number	SS300SB
Standard Acquired	ULAWM2464
Rated Temperature	0 ~ 80°C
Flame Retardance	VW-1
Bending Radius mm (Fixed Parts)	Finished Outer Diameter x 6
Bending Radius mm (Movable Parts)	—
More Information	OP.1291

E Cable



Manufacturer	Misumi
Model Number	NA2464
Standard Acquired	ULAWM2464
Rated Temperature	0 ~ 80°C
Flame Retardance	—
Bending Radius mm (Fixed Parts)	Finished Outer Diameter x 8
Bending Radius mm (Movable Parts)	—
More Information	OP.1293

RS Cable



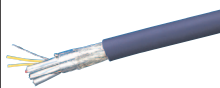
Manufacturer	Misumi
Model Number	SS300RSB
Standard Acquired	ULAWM2464
Rated Temperature	0 ~ 80°C
Flame Retardance	VW-1
Bending Radius mm (Fixed Parts)	Finished Outer Diameter x 6
Bending Radius mm (Movable Parts)	Finished Outer Diameter x 6
More Information	OP.1505

WA Cable



Manufacturer	Misumi
Model Number	MAST-UL20276SB-28
Standard Acquired	ULAWM20276
Rated Temperature	0 ~ 80°C
Flame Retardance	VW-1
Bending Radius mm (Fixed Parts)	Finished Outer Diameter x 10
Bending Radius mm (Movable Parts)	—
More Information	OP.1333

A Cable



Manufacturer	Misumi
Model Number	NANB
Standard Acquired	ULAWM2464
Rated Temperature	-10°C ~ 80°C
Flame Retardance	—
Bending Radius mm (Fixed Parts)	Finished Outer Diameter x 8
Bending Radius mm (Movable Parts)	—
More Information	OP.1299

WB Cable



Manufacturer	Misumi
Model Number	MAST-UL2464SB-28
Standard Acquired	ULAWM20276
Rated Temperature	0 ~ 80°C
Flame Retardance	VW-1
Bending Radius mm (Fixed Parts)	Finished Outer Diameter x 6
Bending Radius mm (Movable Parts)	—
More Information	OP.1285

B Cable

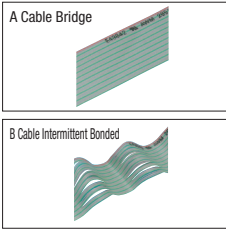


Manufacturer	Misumi
Model Number	NASWS
Standard Acquired	ULAWM2464
Rated Temperature	-10°C ~ 80°C
Flame Retardance	—
Bending Radius mm (Fixed Parts)	Finished Outer Diameter x 8
Bending Radius mm (Movable Parts)	—
More Information	OP.1300

D-sub Connector Included Cable
 MIL Socket Connector Included Cable
 FCN Connector Included Cable
 Connector Included Conversion / Branch Cable
 Centronics Connector Included Cable
 Cable with IEEE 1284 Half Pitch Connector
 MR Connector Included Cable
 PCR Half Pitch Connector Included Cable
 PCS Half Pitch Connector Included Cable
 HDRA / HDR Connector Included Cable
 DX31 Half Pitch Connector Included Cable
 8840 Half Pitch Connector Included Cable
 Han Waterproof Connector Included Cable

Information on Components Used

Flat Cable



A Cable, B Cable	
Manufacturer	Oki Electric Cable
Model Number	FLEX
Standard Acquired	UL2651
Rated Temperature	105°C
Flame Retardance	VW-1
Bending Radius mm (Fixed Parts)	—
Bending Radius mm (Movable Parts)	—
More Information	OP.1614

Single-core Wire



A, B, C, D, E Cables	
Manufacturer	—
Model Number	UL1007 Equivalent
Standard Acquired	AWM1007
UL File No.	—
Rated Temperature	0°C ~ 80°C
Flame Retardance	—
Bending Radius mm (Fixed Parts)	—
Bending Radius mm (Movable Parts)	—
More Information (Reference)	OP.1375 (Similar Specifications)

Cable Finished Outer Diameter / Allowable Current Table

Cable Type	SB	E	KS	RS	A	B	WA	WB	Flat	Single Core	Number of Cores									
											9	15 (H15)	25	37	44	50	62			
	Finished Outer Diameter (mm)	7.4	8.2	6.5	6.5	8.5	5.1	7.4	—	—	—	—	—	—	—	—	—	—	—	—
	Allowable Current (A)	2.38	2.0	1.26	1.25	3.5	1.1	2.4	—	—	—	—	—	—	—	—	—	—	—	—
	Finished Outer Diameter (mm)	6.5	7.4	6.5	6.5	8.4	7.4	7.4	—	—	—	—	—	—	—	—	—	—	—	—
	Allowable Current (A)	1.26	0.95	1.26	1.25	3.5	0.9	2.0	—	—	—	—	—	—	—	—	—	—	—	—
	Finished Outer Diameter (mm)	8.5	9.8	11.8	—	—	—	—	—	—	—	—	—	—	—	—	—	—	—	—
	Allowable Current (A)	3.5	3.0	2.5	—	—	—	—	—	—	—	—	—	—	—	—	—	—	—	—
	Finished Outer Diameter (mm)	8.4	9.7	11.7	—	—	—	—	—	—	—	—	—	—	—	—	—	—	—	—
	Allowable Current (A)	3.5	3.0	2.5	—	—	—	—	—	—	—	—	—	—	—	—	—	—	—	—
	Finished Outer Diameter (mm)	5.1	5.5	6.7	7.6	—	—	—	—	—	—	—	—	—	—	—	—	—	—	—
	Allowable Current (A)	1.1	0.9	0.7	0.6	—	—	—	—	—	—	—	—	—	—	—	—	—	—	—
	Finished Outer Diameter (mm)	7.4	8.2	9.8	11.6	—	—	—	—	—	—	—	—	—	—	—	—	—	—	—
	Allowable Current (A)	2.4	2.0	1.7	1.5	—	—	—	—	—	—	—	—	—	—	—	—	—	—	—
	Finished Outer Diameter (mm)	—	—	—	—	—	—	—	—	—	—	—	—	—	—	—	—	—	—	—
	Allowable Current (A)	1.0	1.0	1.0	1.0	—	—	—	—	—	—	—	—	—	—	—	—	—	—	—
	Finished Outer Diameter (mm)	1.5	1.5	1.5	1.5	—	—	—	—	—	—	—	—	—	—	—	—	—	—	—
	Allowable Current (A)	4.0	4.0	4.0	4.0	—	—	—	—	—	—	—	—	—	—	—	—	—	—	—

Connector Included Cable Selection Method

Square Connector Included Cable

Coaxial Connector Included Cable

Round Connector Included Cable

Nylon Connector Included Cable

Custom Service

Connector Included Cable Documents

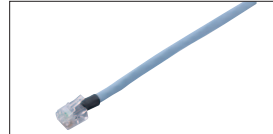
Other Components Used

When Selecting SMD*, PMD*



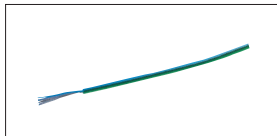
Cable	
Manufacturer	—
Model Number	—
Remarks	Molded Type Mini DIN Connector Cream Color Not in Catalog

When Selecting SRJ



Cable	
Manufacturer	—
Cable Model Number	NETSTAR-C5EPC
Cable Specification	AWG24 x 4P, No Shield
Connector Specification	RJ11
Remarks	Light Blue Not in Catalog

Ground Wire / Ground Terminal



Single-Core Wire for Ground (Common for All Model Numbers)	
Model Number	UL1007-16-GN Equivalent
Standard Acquired	UL1007
Bending Radius	Finished Outer Diameter x 8
More Information	OP.1375 (Similar Specifications)



Crimp Terminal for Ground	
Model Number	RBA1.25-3.5RE Equivalent
Size	3.7mm
Outer Width	6.6mm
Rated Voltage	300V
More Information	OP.472