

Blind Joint Components

Center Joint Kits

Alterations necessary to use this component

M Type Hole Alterations
P.690

Feature: Requires only one screw for tightening. Work efficiency enhancing anti-rotation type is added.

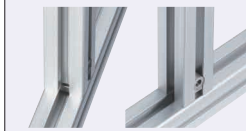
Center Joint Kits -Pre-Assembly Insertion Type- (Standard Direction) (90-Degree Rotated)



Center Joint Kits -Post-Assembly Insertion Type-



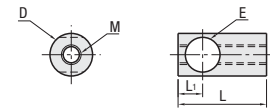
Center Joint Kit -With Rotation Stopper-



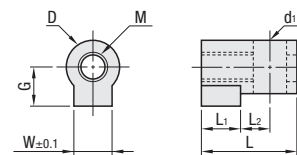
(Ref.) Corner section when using this joint

Type	Components (1 pc. each)					
	Joint Guide		Center Post		Set Screw	
	Type	Material	Type	Material	Size	Material
HMJ	Standard	SUS304	Pre-Assembly Insertion Standard Direction	SCS13	NO.5: M4x8	SCM435 (Surface Treatment: Black Oxide Film)
HMJR			Pre-Assembly Insertion 90-Degree Rotated		NO.6: M6x12	
HAMJ			Post-Assembly Insertion Standard Direction		NO.8: M6x16	
HZJ	With Rotation Stopper	SUS304	Pre-Assembly Insertion Standard Direction	SCS13	NO.8-45: M6x20	
HAZJ			Post-Assembly Insertion Standard Direction			

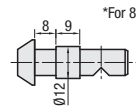
Joint-Guide (Standard)



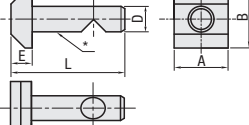
Joint-Guide (with Rotation Stopper)



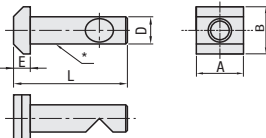
For center posts No.8-45, Extrusion Mating Section (Ø12) is provided as below.



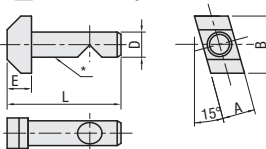
Pre-Assembly Insertion Center Post Standard Direction



Pre-Assembly Insertion Center Post 90-Degree Reversal Type (P.664 Tightening direction is reversed 90-degree, as shown in the example in the lower right-hand corner.)



Post-Assembly Insertion Center Post



Part Number		Accessory					
Type	No.	Center Post	Quantity	Joint Guide	Quantity	Set Screw	Quantity
HMJ HZJ Pre-Assembly Insertion Standard Direction Type	5	Pre-Assembly Insertion Center Post 5	1	Joint Guide 5	1	M4x8	1
	6	Pre-Assembly Insertion Center Post 6		Joint Guide 6		M6x12	
	8	Pre-Assembly Insertion Center Post 8		Joint Guide 8		M6x16	
	8-45	Pre-Assembly Insertion Center Post 8-45		Joint Guide 8-45		M6x20	
HMJR Pre-Assembly Insertion Lock Nut 90-Degree Reversal Type	5	Pre-Assembly Insertion Center Post 5 Rotated	1	Joint Guide 5	1	M4x8	1
	6	Pre-Assembly Insertion Center Post 6 Rotated		Joint Guide 6		M6x12	
	8	Pre-Assembly Insertion Center Post 8 Rotated		Joint Guide 8		M6x16	
	8-45	Pre-Assembly Insertion Center Post 8-45 Rotated		Joint Guide 8-45		M6x20	
HAMJ HAZJ Post-Assembly Insertion Type	5	Post-Assembly Insertion Center Post 5	1	Joint Guide 5	1	M4x8	1
	6	Post-Assembly Insertion Center Post 6		Joint Guide 6		M6x12	
	8	Post-Assembly Insertion Center Post 8		Joint Guide 8		M6x16	
	8-45	Post-Assembly Insertion Center Post 8-45		Joint Guide 8-45		M6x20	

Pre-Assembly Insertion Center Post (Standard Direction / 90-Degree Reversal)

Part Name	D	L	E	A	B
Pre-Assembly Insertion Center Post 5	4	20.5	3.5	10	10
Pre-Assembly Insertion Center Post 5 Rotated	4	20.5	3.5	10	10
Pre-Assembly Insertion Center Post 6	6.6	29.5	5.5	14	15
Pre-Assembly Insertion Center Post 6 Rotated	6.6	29.5	5.5	14	15
Pre-Assembly Insertion Center Post 8	9.8	41	6	17	17
Pre-Assembly Insertion Center Post 8 Rotated					
Pre-Assembly Insertion Center Post 8-45	9.8	42	6.4	10	17
Pre-Assembly Insertion Center Post 8-45 Rotated					

Post-Assembly Insertion Center Post

Part Name	D	L	E	A	B
Post-Assembly Insertion Center Post 5	4	20.5	3.5	6	10
Post-Assembly Insertion Center Post 6	6.6	30.4	6.4	8	15
Post-Assembly Insertion Center Post 8	9.8	41.4	6.4	10	17
Post-Assembly Insertion Center Post 8-45					

Joint-Guide (Standard)

Part Name	D	L	L1	E	M
Joint Guide 5	6.9	12	4	4.1	4
Joint Guide 6	10.9	19	6	6.8	
Joint Guide 8	12.8	27	7.5	9.9	6
Joint Guide 8-45					

Joint-Guide (with Rotation Stopper)

Center Joint No.	Applicable Extrusion No.				[Exception] Extrusion Not Available
5	5-2020*1	5-2040	5-2060	5-2080	*1 Curved HFSRS-2020 cannot be used, because Wrench Hole Machining is not allowed.
	5-4040	5-4060	5-4080		
6	6-3030*1	6-3060	6-3090*2	6-30120*2	*1 Curved HFSRG-3030 cannot be used, because Wrench Hole Machining is not allowed. *2 Cannot be used in the long side direction because standard hole machining is not allowed.
	6-5050	6-50100*2			
	6-6060	6-6090			
8	8-4040*1	8-4080	8-40120	8-40160*2	*1 Curved HFSR8-4040 cannot be used, because Wrench Hole Machining is not allowed. *2 Cannot be used in the long side direction because standard hole machining is not allowed.
	8-4545*1	8-4590*1	8-45180*2		*1 HFSL8-4545, HFSLF8-4545, HFSLT8-4545 and HFSL8-4590 cannot be used because the thickness of slot extrusion is different. *Curved HFSR8-4545 is not applicable since wrench holes cannot be added. *2 Cannot be used in the long side direction because standard hole machining is not allowed.

Part Name	D	G	W	L	L1	L2	d1	M
Joint Guide 5	6.9	5.5	5.8	13.0	4	13	4.1	4
Joint Guide 6	10.9	8	7.8	19.5	6	19.5	6.8	
Joint Guide 8	12.8	9	9.8	28.0	7.5	28	9.9	6

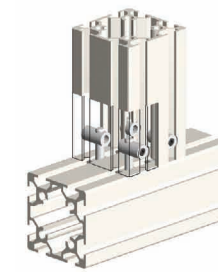
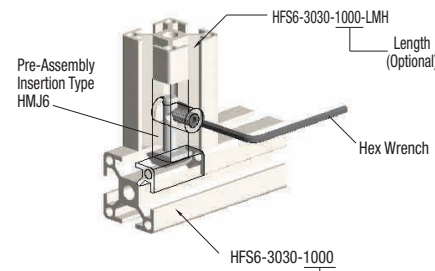


Example Center Joint Connection

Step	Front View / Side View	Standard Type	With Rotation Stopper	Description
1				Mount a center post to extrusion (A) (Post-Assembly Insertion Type can be inserted by turning from upside of the slot.) Center Post is for Standard Type and With Rotation Stopper Type.
2				Insert a joint guide in the extrusion (B) with M type hole (P.690) For standard type, adjust the through hole to be upward.
3				Move the extrusion (A) close to the extrusion (B) while putting the center post through the through hole of joint guide.
4				Tighten the set screw to the side of joint guide.
5				When the set screw is tightened against a V groove on the center post, extrusion (A) and (B) are pulled and bound together.

Product Number for the parts shown on the above example (Standard Type).

Connecting extrusions with 2 or more slots on one side
Insert joint guide from the both sides of M type hole, and connect and tighten it with two or more center joints.
For extrusions with three slots, holes are not provided on the center slot (For extrusions with four rows of holes, all slots are drilled).



Pre-Assembly Insertion 90-Degree Rotated Type
HMJR
Can reverse tightening direction by 90 degrees.

2-slotted extrusions can be connected by using two Center Joint kits.

3-slotted extrusions are connected using two outside slots only.

Ordering Example
Part Number
HMJ8