

# One-Touch Couplings

Similar Products Comparison Points | Electroless nickel plating applied to the thread enhances appearance and corrosion resistance compared to C-VALUE products.

When ordering, select Part Number and Values from Selection Steps ①~③.

Ordering Example: Part Number (①Type · ②D) - ③Nominal - ④Body Color

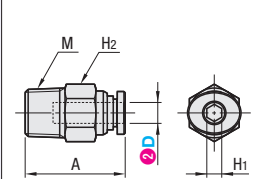
MSELLS8 - 2 - W  
MSCNC10 - 1

## Male Connectors - Outlined with Hexagon



CAD 2D 3D RoHS10

## MSCNL Threads: C3604 (Brass) : Electroless Nickel Plating



Material Ring: PBT (Polybutylene Terephthalate)

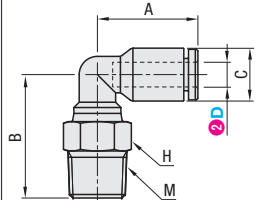
Part Number	①Type	②D	③Nominal	A	Hexagon Socket Width Across Flats	Wrench Flats H	Thread Size M	Effective Sectional Area (mm <sup>2</sup> )	Mass (g)
MSCNL	4	M5	1	20.1	2	8	M5x0.8	3.2	4.5
			2	20.1	3	10	R1/8	3.2	8.6
			3	20.1	14	R1/4	17.3	17.3	
	6	M5	1	21.8	2	11	M5x0.8	3.2	8.3
			2	22.6	4	14	R1/8	9.2	9.2
			3	22.8	4	14	R1/4	11.5	18.2
	8	M5	1	27.7	5	13	R1/8	18.7	17.1
			2	27.7	6	14	R1/4	26.9	27.3
			3	28.7	6	14	R3/8	27.3	27.3
	10	M5	1	29.4	5	17	R1/8	18.5	22.2
			2	32.4	6	17	R1/4	26.9	27.6
			3	28.4	8	17	R3/8	29.3	29.3
12	M5	1	27.3	8	21	R1/2	38.9	48.5	
		2	35.4	6	19	R1/4	26.9	34.2	
		3	31.8	8	19	R3/8	33.5	33.5	
			4	33.8	8	21	R1/2	47.9	54.8

## Male Elbows (MESELL)



CAD 2D 3D RoHS10

## MSELL Threads: C3604 (Brass) : Electroless Nickel Plating



Material Main Body: PBT (Polybutylene Terephthalate)

Part Number	①Type	②D	③Nominal	A	B	C	Wrench Flats H	Thread Size M	Effective Sectional Area (mm <sup>2</sup> )	Mass (g)
MSELL	4	M5	1	17.1	14.6	9	9	M5x0.8	3.2	4.6
			2	17.1	17.8	9	10	R1/8	4.4	7.9
			3	17.1	20.8	14	14	R1/4	17	17
	6	M5	1	18	15.7	9	9	M5x0.8	3.2	5.4
			2	18	18.9	11.2	10	R1/8	8.7	8.7
			3	18	21.9	14	14	R1/4	8.5	17.8
	8	M5	1	23.6	20.3	10	10	R1/8	10.4	10.4
			2	23.6	22.8	13.6	14	R1/4	15	19.1
			3	23.6	23.8	17	17	R3/8	28.4	28.4
	10	M5	1	25	23.6	17	17	R1/8	22.1	20.8
			2	25	26.6	16.3	17	R1/4	25.5	25.5
			3	25	26.1	17	17	R3/8	31.5	27.5
12	M5	1	25	29.1	21	21	R1/2	47.2	47.2	
		2	32.2	28.5	19.7	17	R1/4	41.7	31.1	
		3	32.2	28	19.7	17	R3/8	33.1	33.1	
			4	32.2	31	21	R1/2	42.6	52.8	

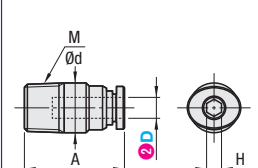
Body color for MSELL is Black.

## Male Connectors - Outlined with Circle



CAD 2D 3D RoHS10

## MSCNC Threads: C3604 (Brass) : Electroless Nickel Plating



Material Ring: PBT (Polybutylene Terephthalate)

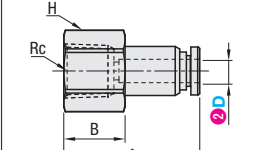
Part Number	①Type	②D	③Nominal	A	Hexagon Socket H	Ød	Thread Size M	Effective Sectional Area (mm <sup>2</sup> )	Mass (g)
MSCNC	4	M5	1	20.1	2	8.2	M5x0.8	3.2	4.2
			2	20.1	3	10	R1/8	7.2	8
			3	21.8	2	11	M5x0.8	3.2	7.2
	6	M5	1	22.6	4	13.5	R1/4	11.5	16.8
			2	22.8	4	13.5	R1/4	11.5	16.8
			3	27.7	5	13	R1/8	18.7	13.1
	8	M5	1	25.7	6	13.5	R1/4	26.9	15.5
			2	23.7	6	17	R3/8	26.9	25.9
			3	29.4	5	15.5	R1/8	18.5	18
	10	M5	1	32.4	6	15.5	R1/4	26.9	23.3
			2	28.4	8	17	R3/8	25.7	25.7
			3	27.3	8	21	R1/2	46.7	46.7
12	M5	1	35.4	6	18.8	R1/4	26.9	29.7	
		2	31.8	8	18.8	R3/8	30.2	30.2	
		3	31.8	8	21	R1/2	47.9	50.6	

## Female Connectors



CAD 2D 3D RoHS10

## MSCNF Threads: C3604 (Brass) : Electroless Nickel Plating



Material Ring: PBT (Polybutylene Terephthalate)

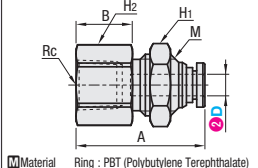
Part Number	①Type	②D	③Nominal	A	B	Wrench Flats H	Wrench Flats H	Thread Size Rc	Effective Sectional Area (mm <sup>2</sup> )	Mass (g)
MSCNF	4	M5	1	24.4	11	13	13	Rc1/8	3.2	13.5
			2	27.4	14	17	17	Rc1/4	11.0	24.9
			3	25.4	11	13	Rc1/8	11.0	14.8	
	6	M5	1	28.4	14	17	17	Rc1/4	11.0	26.1
			2	29.4	15	19	Rc3/8	27.6	27.6	
			3	27.7	10	13	Rc1/8	16.4	16.4	
	8	M5	1	30.7	14	17	17	Rc1/4	25.2	27.7
			2	31.7	15	19	Rc3/8	29.2	29.2	
			3	32.4	13	17	Rc1/4	30.3	30.3	
	10	M5	1	33.4	15	19	19	Rc3/8	38.7	32.5
			2	36.4	18	24	Rc1/2	53.6	53.6	
			3	35.4	12	19	Rc1/4	45.3	45.3	
12	M5	1	36.4	15	19	19	Rc3/8	39.4	39.4	
		2	39.4	18	24	Rc1/2	60.6	60.6		
		3	39.4	18	24	Rc1/2	60.6	60.6		

## Female Threaded Bulkhead Unions



CAD 2D 3D RoHS10

## MSSB Threads: C3604 (Brass) : Electroless Nickel Plating



Material Ring: PBT (Polybutylene Terephthalate)

Part Number	①Type	②D	③Nominal	A	B	Wrench Flats H <sub>1</sub>	Wrench Flats H <sub>2</sub>	Thread Size MxPitch	Thread Size Rc	Effective Sectional Area (mm <sup>2</sup> )	Mass (g)
MSSB	4	M5	1	25.1	11	14	14	M12x1.0	Rc1/8	3.2	18
			2	26.3	9	17	17	M14x1.0	Rc1/8	11	26
			3	31.3	14	17	17	M14x1.0	Rc1/4	30	
	6	M5	1	28.9	8	19	19	M16x1.0	Rc1/8	34.5	34.5
			2	34.9	14	19	19	M16x1.0	Rc1/4	42.5	42.5
			3	35.9	15	19	19	M16x1.0	Rc3/8	36	
	8	M5	1	32.3	13	24	22	M20x1.0	Rc1/4	58.5	58.5
			2	34.3	15	24	22	M20x1.0	Rc3/8	55	
			3	37.4	14	26	24	M22x1.0	Rc3/8	71.5	
	12	M5	1	41.4	18	26	24	M22x1.0	Rc1/2	70.5	70.5
			2	41.4	18	26	24	M22x1.0	Rc1/2	70.5	
			3	41.4	18	26	24	M22x1.0	Rc1/2	70.5	

## Specifications

	MJCNLS	MJELLS	Other than MJCNLS, MJELLS
Applicable Fluid	Compressed Air	Water	Compressed Air
Operating Temperature Range*	-15 ~ 60°C	5 ~ 40°C	0 ~ 60°C
Max. Operating Pressure	1MPa	0.9MPa	0.9MPa
Operating Vacuum Level	-100kPa	-	-100kPa

\*No Freezing

Thread part C3604 (Brass) is all electroless nickel plating applied. Seal-coated, no sealing tape required (Except for M5).

# MiSUMI C-VALUE One-Touch Couplings

Similar Products Comparison Points | Threads are not electroless nickel plated. Makes it that much more economical. Not RoHS compliant.

When ordering, select Part Number and Values from Selection Steps ①~③.

Ordering Example: Part Number (①Type · ②D) - ③Thread Size Nominal

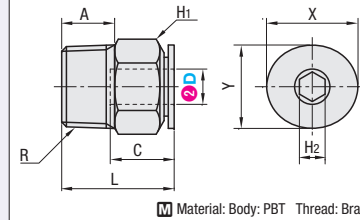
PACK-EPFH8 - 2

## Male Thread Fittings (Square)



CAD 2D 3D

## PACK-EPFH



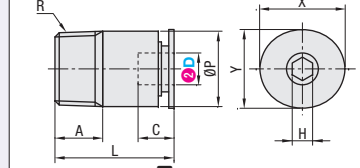
Material: Body: PBT Thread: Brass

## Male Thread Fittings (Round)



CAD 2D 3D

## PACK-EPFS



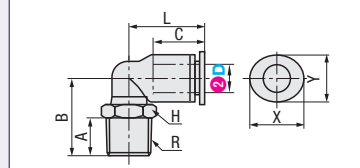
Material: Body: PBT Thread: Brass

## Male Elbows



CAD 2D 3D

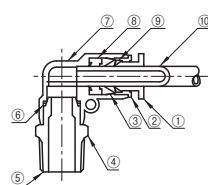
## PACK-EPFL



Material: Body: PBT Thread: Brass



## One-Touch Coupling Part Drawing



Seal material is applied to thread portion. (Except for M5)

No.	Name of Parts	Material
1	Release Ring	POM
2	Guide Ring	Zinc
3	Holder	POM
4	Metal Body	Brass
5	Seal Coating	PTFE
6	O-Rings	NBR
7	Resin Body	PBT
8	Elastic Sleeve	NBR
9	Lock Pawl	Stainless Steel
10	(Air Pipe)	PU / Nylon, etc.

## Tightening Torque Table

Thread Type	Thread Dimension (Thread Code)	Tightening Torque (kgf.cm)	(N)
Metric Thread	M5	15-19	1.4-1.8
	R1/8(1)	70-90	7-9
	R3/8(3)	220-240	22-24
Tapered Thread (R)	R1/4(2)	120-140	12-14
	R1/2(4)	280-300	27-29

Precautions for Use (One-Touch Coupling, Flow Rate Controller)

- Do not apply excessive bending, tension and torsion forces to the fitting body. It may cause damages.
- When tightening the screw, refer to Tightening Torque Table shown on the left. Excessive tightening may cause leakage due to breakage of threads or deformation of gasket. Insufficient tightening may cause screw loose and leakage. (Flow Rate Controller)
- Not suitable for usage requiring complete flow rate shut-off.



Example

Simplified press fit fixture with a cylinder.

