

Threaded Bearings / Urethane Molded Bearings Shafts / Eccentric Bushings

Cantilever Rollers

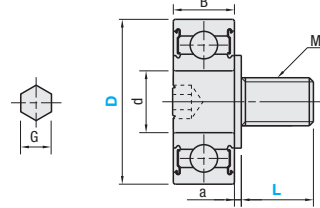
Features: As a mounting screw is already included, no extra retaining part is required.

Threaded Bearings



RoHS

Type		Material		Surface Treatment	
Standard Threaded	Long Threaded	Bearing	Shaft	Shaft	
NTBG	NTBGT	Steel	SUM	Electroless Nickel Plating	
NTSBG	NTSBGT	Stainless Steel	SUS303	-	



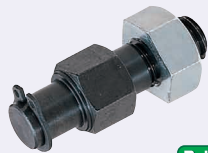
The base of thread contains an incomplete thread portion.

Part Number Type	D	L		B	d	a	G	M (Coarse)	Bearing	Unit Price		
		Standard Threaded	Long Threaded							NTBG	NTSBG	NTBGT
Standard Threaded NTBG NTSBG	6	4	6	2.5	3			M3	673ZZ			
	7	4	6	3	3			M3	W683ZZ			
	8	5	8	2.5	5			M4	675ZZ			
	9	5	8	4	4			M4	W684A×50ZZ			
	13	5	8	5	4			M4	624ZZ			
	16	5	8	5	5			M4	625ZZ			
Long Threaded NTBGT NTSBGT	19	8	12	6	6			M6	626ZZ			
	22	8	12	7	8			M6	608ZZ			
	26	8	12	8	10	2.5	5	M6	6000ZZ			
	30	8	12	9	10	2	5	M6	6200ZZ			
	32	12	20	9	15	2.5	5	M10	6002ZZ			
	35	12	20	11	15	3	5	M10	6202ZZ			
	37	12	20	9	20	2.5	8	M10	6904ZZ			
	47	12	20	14	20	3	8	M10	6204ZZ			
	52	12	20	15	25	3	10	M10	6205ZZ			

Part Number - L
NTBG16 - 5

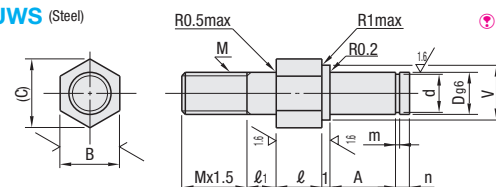
For bearing detailed dimensions, see P989, 991.

Urethane Molded Bearing Shafts



RoHS

UWS (Steel)



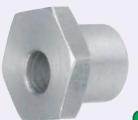
Applicable to the products on P.1151, 1152. $\frac{63}{\sqrt{15}}$

M Material: SS400
S Surface Treatment: Black Oxide
A Accessory: Nut, Retaining Ring-C Type
(Retaining Ring-E Type for No. 312-830.)

Part Number Type	No.	Dg6	A	ℓ	ℓ1	V	d	Tolerance	M	B	(C)	m	Dimension Tolerance	n	Applicable Urethane Molded Bearing	Unit Price	
																	±0.06
UWS	312	3	3	-	4	2.05	3	5	5.8	0.5	0.5	+0.05	0	2	UMBB	3-12	
	413	4	4	1	5	3.05	4	7	8.1	0.7	0.7	+0.1	0	2	UMBB	4-13	
	416	4	4	1	6	3.05	4	7	8.1	0.7	0.7	+0.1	0	2	UMBB	4-16	
	516	5	5	2	6.9	4.05	5	8	9.2	0.7	0.7	+0.1	0	2	UMBS	5-16	
	620	5	5	2	7.5	4.05	5	8	9.2	0.7	0.7	+0.1	0	2	UMBS	5-20	
	628	6	6	3	8	5.05	6	10	11.5	0.9	0.9	+0.14	0	2	UMBL	6-20	
	828	8	8	4	12	7.1	8	14	16.2	0.9	0.9	+0.14	0	3	UMBL	6-28	
	830	8	8	4	13	7.1	8	14	16.2	0.9	0.9	+0.14	0	3	UMBL	8-28	
	1030	10	10	5	16	9.6	10	19	21.9	1.15	1.15	+0.14	0	4	UMBD	8-30	
	1040	10	10	5	18	9.6	10	19	21.9	1.15	1.15	+0.14	0	4	UMBD	10-30	
	1540	15	15	9	19	14.3	12	21	24	1.35	1.35	+0.14	0	4	SUMBB	10-40	
	1545	15	15	9	23	14.3	12	21	24	1.35	1.35	+0.14	0	4	SUMBB	15-40	
	2045	20	20	14	23	19	0	23	24	1.35	1.35	+0.14	0	4	UMSW	15-45	
	2055	20	20	14	25	19	0	23	24	1.35	1.35	+0.14	0	4	UMSG	20-45	
															4	UMSGW	20-55

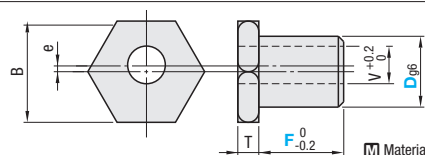
Ordering Example Part Number UWS312

Eccentric Bushings

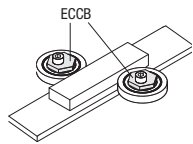


RoHS

ECCB



Example



M Material: S45C Equivalent

Part Number Type	Dg6	F Selection	Applicable Bearing	V	B	T	e	Unit Price
ECCB	6	5	696ZZ	3	10	3	0.3	
		6	606ZZ, 626ZZ					
		6	698ZZ					
		7	608ZZ					
		8	628ZZ					
		6	6900ZZ					
	10	8	6000ZZ	5	14	3	1	
		9	6200ZZ					
		6	6901ZZ					
		8	6001ZZ					
	12	10	6201ZZ	6	17	3	1.2	
		7	6902ZZ					
		9	6002ZZ					
	15	9	6002ZZ	8	19	3	1.5	
		11	6202ZZ					

Ordering Example Part Number - F
ECCB10 - 8

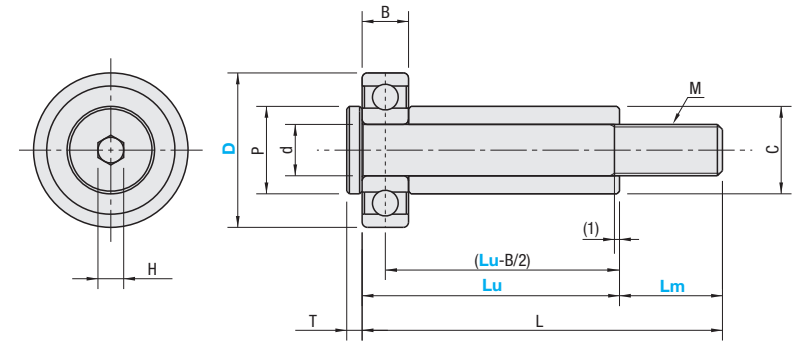
For bearing detailed dimensions, see P989.

Features: Rollers that use bearings. Spacer thickness can be specified from 1mm, and any mounting height can be selected.



RoHS

Bearing and Spacer can be shipped in an intact state by tightening the gap between O.D. of Pin and I.D. of Spacer. It can prevent falling or missing of parts and reduce time and effort during assembly.



Type	Bearing	Pin	Spacer	Surface Treatment
BWP	SUJ2	S45C	SS400	Black Oxide

Part Number Type	D	1mm Increment		L	B	d	M (Coarse)	H (Hex Socket)	T	C=P	Bearing Part No.	Unit Price
		Lu	Lm									
BWP	11	6~25	5~10	Lu+Lm	5	5	M5	2.5	2	8	685ZZ	
	13	5~25	5~10									
	16	6~40	8~16		5	8	M8	4	3	11	688ZZ	
	19	7~40	8~16									
	22	8~40	8~16		6	8	M8	4	3	11	698ZZ	
	26	9~50	10~20									
	30	10~50	10~20		7	8	M8	4	3	14	6000ZZ	
					8	10	M10	5	3	17	6200ZZ	

Regardless of the specified dimension, (Lm dimension + 1mm) is the threaded section.

Ordering Example Part Number - Lu - Lm
BWP11 - 17 - 10

Example

Cable Carry Guide

