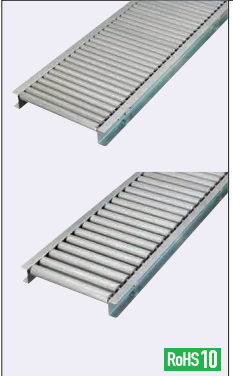


Roller Conveyor Length Configurable

Roller 28, 38mm Diameter Type

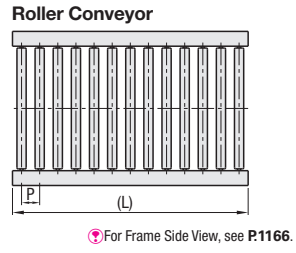
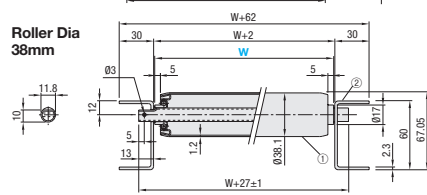
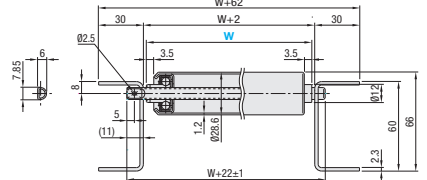
■ **Features:** Short roller conveyors 1m or less, with configurable width and length.



Roller Dia.	Roller Pitch				① Roller (HRO28, HRO38)		Bearing		② Frame	
	P=30	P=50	P=75	P=100	M Material	S Surface Treatment	M Material	S Surface Treatment	M Material	S Surface Treatment
28mm	ROCOM	ROCOG	-	-	Steel	Hot-dip Galvanized	Steel	-	Steel	Galfan or Equivalent
38mm	-	ROCOE	ROCOH	ROCOJ	-	-	-	-	-	-

Roller Dia.	Roller Pitch				R Pin		Frame Coupling Support		Screw, Nut	
	P=30	P=50	P=75	P=100	M Material	S Surface Treatment	M Material	S Surface Treatment	M Material	S Surface Treatment
28mm	ROCOM	ROCOG	-	-	Steel	Trivalent Chromate	Steel	Trivalent Chromate	Steel	Trivalent Chromate
38mm	-	ROCOE	ROCOH	ROCOJ	-	-	-	-	-	-

Roller Dia. 28mm ⚠ Holes for Roller Shafts are provided at 50mm pitch on ROCOJ (P=100) frames.



⚠ For Alterations, see P.1170.

Roller 28mm Diameter Type

Part Number	Number of Rollers	(L)		Unit Price											
		ROCOM P=30	ROCOG P=50	ROCOM (P=30)					ROCOG (P=50)						
		W113	W213	W313	W413	W513	W113	W213	W313	W413	W513				
7	(230)	(350)													
8	(260)	(400)													
9	(290)	(450)													
10	(300)	(500)													
11	(330)	(550)													
12	(360)	(600)													
13	(390)	(650)													
14	(430)	(700)													
15	(460)	(750)													
16	(490)	(800)													
17	(530)	(850)													
18	(560)	(900)													
19	(590)	(950)													
20	(600)	-													
21	(630)	-													
22	(660)	-													
23	(690)	-													
24	(730)	-													
25	(760)	-													
26	(790)	-													
27	(830)	-													
28	(860)	-													
29	(890)	-													
30	(900)	-													
31	(930)	-													
32	(960)	-													

Roller 38mm Diameter Type

Part Number	Number of Rollers	(L)			Unit Price 1 ~ 5 pcs(s).														
		ROCOE P=50	ROCOH P=75	ROCOJ P=100	ROCOE (P=50)					ROCOH (P=75)					ROCOJ (P=100)				
		W113	W213	W313	W413	W513	W113	W213	W313	W413	W513	W113	W213	W313	W413	W513			
4	(200)	(300)	(350)																
5	(250)	(375)	(450)																
6	(300)	(475)	(550)																
7	(350)	(500)	(650)																
8	(400)	(575)	(750)																
9	(450)	(675)	(850)																
10	(500)	(775)	-																
11	(550)	(800)	-																
12	(600)	(875)	-																
13	(650)	(975)	-																
14	(700)	-	-																
15	(750)	-	-																
16	(800)	-	-																
17	(850)	-	-																
18	(900)	-	-																
19	(950)	-	-																

⚠ For orders larger than indicated quantity, please request a quotation.

Ordering Example	Part Number	-	W
	ROCOM20	-	413
	ROCO116	-	213
	ROCOE8	-	313
	ROCOJ6	-	113

Alterations P.1170

Roller Conveyor Parts Alterations

Stands / Guide Mounts for Roller Conveyors

Alterations	Part Number	-	W	-	(SH, GA, GT, KN, ST, SW)
	ROCO38	-	113	-	GA-A-L550
	ROCO38	-	113	-	KN-G2
	ROCOM28	-	113	-	ST-F550
	ROCOJ6	-	113	-	GA-A-L550-KN-G2-ST-F550

Alterations	Code	Spec.
<p>Stand Mounting Hole Machining</p>	SH	Roller Conveyors can be hole drilled for stand mounting. Ordering Code SH ⚠ SH alteration is applied to ROCOP. ⚠ Cannot be combined with ST ⚠ Number of Holes for (L) dimension 400 or less is 2, and with the division of center there are 100 Pitches. ⚠ Not applicable to (L) dimension 150 or less.
<p>Conveyor Guide Rails</p>	GA GT	GA : One Conveyor guide is added. GT : Two Conveyor guides are added. Specify L : 100 ~ 1000, in 5mm increment. Ordering Code Code - Shape - Length GA - A - L300 GA - B - L450 GA - C - L550 ⚠ Packaged together with Roller Conveyors.
<p>Guide Holder Bracket</p>	KN	Guide mounting brackets can be added to Roller Conveyors. Ordering Code KN-G2 (Guide Holder Brackets 2pcs.) ⚠ Mounting screws and nuts (M10) are included. ⚠ The code numerals represent quantities. ⚠ Shipped unassembled. W+150 Guide Integrated (=Roller Width W) W±15 ⚠ Material: Steel ⚠ Surface Treatment: Trivalent Chromate
<p>Conveyor Stand</p>	ST SW	ST : Adds one Roller Conveyor Stand. SW : Adds two Roller Conveyor Stands. ⚠ Specify F : 450~1200, in 50mm increment. Ordering Code ST-F950 ⚠ Applies hole machining on Roller Conveyor when SW is specified. ⚠ Shipped unassembled. ⚠ Mounting hole location is the same as Alteration SH. ⚠ ④ One reinforcement piece for F800 or less.

⚠ Roller Conveyor part alterations are RoHS compliant.

