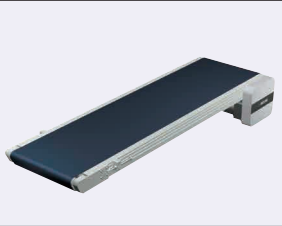


# Flat Belt Conveyor High Power Type

With Meandering Prevention Crosspiece, Head Drive, 3-Groove Frame (Pulley Dia. 60mm / 30mm)

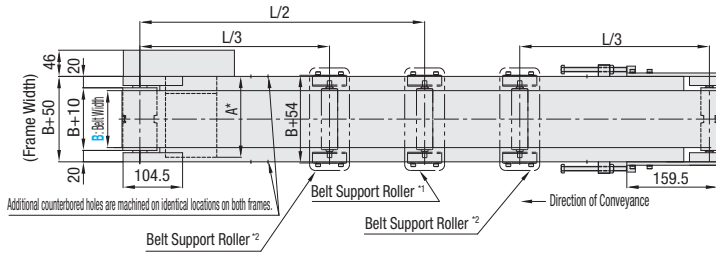
Dedicated web site <http://fa.misumi.jp/cvs/>  
 Conveyor selecting, component purchases, and easy search for maintenance parts are available.

■ Features: Up to 90W, Medium distance (up to 6m) transfer suited conveyor. Meandering can be prevented by the use of crosspiece.



CVSF

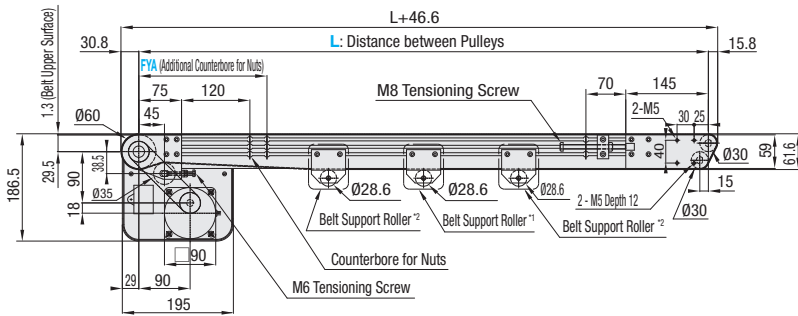
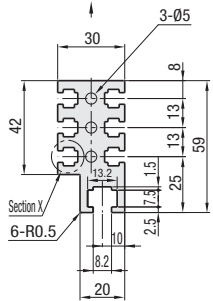
60W/90W Motor Type



	Frame	Motor Cover	Pulley Holder
M Material	Aluminum	SPCC	SS400
S Surface Treatment	Clear Anodize	Paint	Paint

Frame Cross Section and Enlarged View (Symmetrical)

Carrying Surface Side



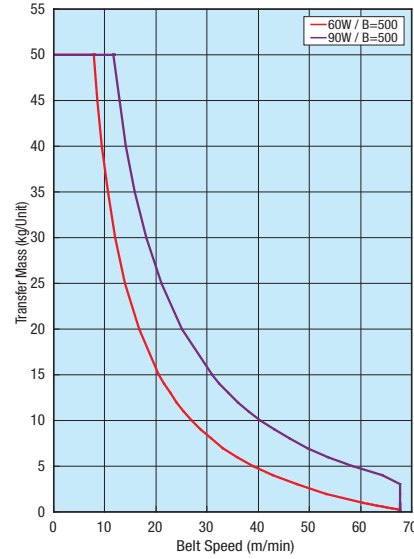
- \*1 When  $L \geq 2005$ , a belt support roller is mounted in the diagram location.
- \*2 When  $L \geq 4005$ , 2 belt support rollers are mounted in the diagram locations.
- ⚠ The dimensions in the diagram is for Belt Specifications H (0.8mm THK). Take note that belt thickness varies by Belt Specifications, see P.1279--.

⚠ Compatible with JIS standard hex nuts.

■ A Dimension Details

Output (W)	Motor		Reduction Ratio	A
	Specification	Manufacturer		
60W	Induction Motor	Panasonic	5~180	180.0
		Oriental	5~180	185.0
		Taiwanese	5~75	182.6
	Variable Speed Motor	Oriental	90~180	191.6
		Taiwanese	5~75	194.6
		Taiwanese	90~180	203.6
90W	Induction Motor	Panasonic	5~180	195.0
		Oriental	5~180	200.0
		Taiwanese	5~75	195.6
	Variable Speed Motor	Oriental	90~180	204.6
		Taiwanese	5~180	230.0
		Taiwanese	5~75	209.6
			90~180	218.6

■ Conveying Capacity



■ Gearhead Reduction Ratio

\*May decrease depending on load condition.

Gearhead Reduction Ratio	Belt Speed (m/min)	
	50Hz	60Hz
5	56.4	67.7
7.5	37.6	45.1
9	31.3	37.6
12.5	22.6	27.1
15	18.8	22.6
18	15.7	18.8
25	11.3	13.5
30	9.4	11.3
36	7.8	9.4
50	5.6	6.8
60	4.7	5.6
75	3.8	4.5
90	3.1	3.8
100	2.8	3.4
120	2.4	2.8
150	1.9	2.3
180	1.6	1.9

Part Number	B Selection	L 5mm Increment	Motor				Belt Specification	FYA (Additional Counterbores) 5mm Increment	Motor Manufacturer Selection
			Output (W)	Voltage (V)	Specification	Gearhead Reduction Ratio			
CVSF	100 200 300 400 500	440~6000	60 90	T100 (Single-phase)	IM (Induction Motor)	5 7.5 9 12.5 15 18 25 30 36 50 60 75 90 100 120 150 180	H (General Purpose, Green) W (General Purpose, White) G (For Sliding, Green) S (For Sliding, White) D (For Electronic Parts Transfer) O (Oil Resistant) N (Non-adhesive) J (No Belt)	205<FYA<L-225 *When not specified, there will be no additional counterbores.	A (Panasonic Motor) B (Oriental Motor) C (Taiwanese Motor) *SCM (Variable Speed Motor) is not selectable for A.
				T200 (Single-phase)	SCM (Variable Speed Motor)				
				S200 (3-Phase)	IM (Induction Motor)				
				NV (No Motor)	NM (No Motor)				
					NH (No Gearhead)				

- ⚠ Connect the motor so that the belt rotates in the direction of conveyance. For connection diagram, and details of motor and inverter, see P.1267 onward. ⚠ When  $L \geq 2005$ , customers are to assemble.
- ⚠ Workpiece weighing over 10kg/unit might deform belt base plate.
- ⚠ When the unit length (L dim.) is 2000mm or less, this will be delivered complete. For a unit over 2000mm, the frame is delivered in sections and the customer is to assemble according to the included assembly instructions. The assembly procedure manual can also be downloaded from our Conveyor Selection web site.
- ⚠ When "No motor, gearhead" is selected, the motor mounting hole pitch will vary depending on the motor's power rating. Please see Technical Information in our Conveyor Selection web site for the dimension details.
- ⚠ When "No motor, gearhead" is selected, this unit will be delivered unassembled. The customer is to assemble the unit according to the included assembly instructions. See our Conveyor Selection site for assembly procedures and packaging details.
- ⚠ Note that warpage might occur in meandering prevention crosspiece belts depending on the number of plies (thickness).

Belt Specification	Standard Belt (Body Price Only)	Optional Belt 1	Optional Belt 2	No Belt
General Purpose	H (Green), W (White)	-	-	J (No Belt)
For Sliding	G (Green), S (White)	-	-	
For Inclined Transfer	-	-	-	
Grip Type	-	-	GG (Green), GW (White)	
Oil Resistant	O (Green)	OW (White)	-	
Non-adhesive	N (White)	NB (Sky Blue), NBG (Lime Green) HH (Green), HW (White)	-	
For Food Transfer	-	KW (White), KSB (Sky Blue), PHB (Sky Blue)	-	
For Electronic Parts Transfer	D (Black)	-	-	

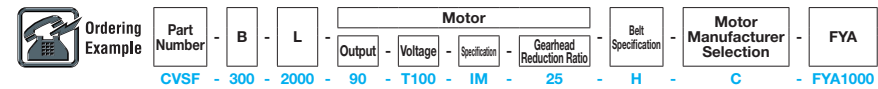
- ⚠ For flat belt details, see P.1279 onward.
- ⚠ In case of selecting Optional Belts, please select motor manufacturer A or B (Motor C is applicable for Standard Belt only).

Part Number	B	Body Price 1 ~ 2 pc(s).																							
		L440-600	L605-800	L805-1000	L1005-1200	L1205-1400	L1405-1600	L1605-1800	L1805-2000	L2005-2200	L2205-2400	L2405-2600	L2605-2800	L2805-3000	L3005-3250	L3255-3500	L3505-3750	L3755-4000	L4005-4250	L4255-4500	L4505-5000	L5005-5500	L5505-6000		
CVSF	100																								
	200																								
	300																								
	400																								
	500																								

⚠ For orders larger than indicated quantity, please check with WOS.

Price with Motor	Motor Output	Specification	A (Panasonic Motor)	B (Oriental Motor)	C (Taiwanese Motor)	R (No Motor, Gearhead)
			60W	IM		
	90W	SCM				

Belt Spec. Price	Standard Belt	Optional Belt 1	Optional Belt 2	No Belt
------------------	---------------	-----------------	-----------------	---------



Ex.) For No Belt: CVSF-100-1000-60-T100-SCM-25-J-F300-B  
 Ex.) For Optional Belt 2: CVSF-100-1000-60-T100-SCM-25-HY-F300-B  
 Ex.) For No Motor, Gearhead: CVSF-100-1000-60-NV-NM-NH-H-F300-R

→ Body Price + Motor, Belt Spec. Price = Unit Price

- Motor Position Reversed
- Brackets for Speed Controller Included
- Post-Assembly Insertion Nuts Included
- Motor with Terminal Box
- Stands (Legs)

For details of alterations, see P.1264 onward.