

# Guide Rails and Brackets L Type

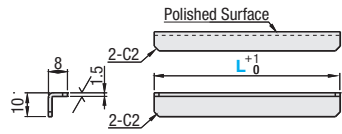
Dedicated web site <http://fa.misumi.jp/cvs/>  
Conveyor selecting, component purchases,  
and easy search for maintenance parts are available.

## L-Shaped Conveyor Guide Rails

**CGL**



RoHS 10



Material: SUS304

Part Number	L 5mm Increment	Unit Price
CGL	150~ 300	
	305~ 500	
	505~ 750	
	755~1000	

Ordering Example  
Part Number - L  
CGL - 380

## L-Shaped Conveyor Guide Rail Brackets - Standard Type

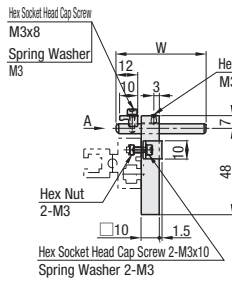


RoHS 10

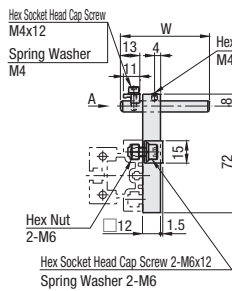
**CGK**  
(W=50,60)

**CGKL**  
(W=100)

No.55



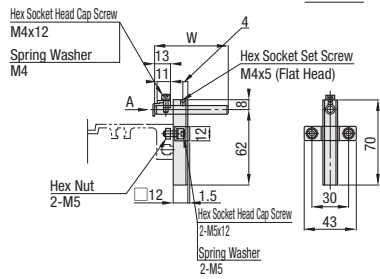
No.70



Material: SUS304

No.55 ~ 80 have different bolt size for the conveyor mount part. Select an appropriate bolt according to the conveyor you are using.

No.80



Material: SUS304

Part Number	Type	No.	W	Unit Price
CGK (W=50,60)		55	50	
		70	60	
		80	60	
CGKL (W=100)		55	100	
		70	100	
		80	100	

Ordering Example  
Part Number  
Type No.  
CGK 80

Alterations  
Part Number  
Type No. - (CL)  
CGK 70 - CL

Alterations	Code	Spec.
Change to Product with Clamp Lever 	CL	Hex socket set screws are replaced with the clamp lever (Orange, CLDMC4-8-M equivalent). ⊗ Not applicable to CGK55/CGKL55

## L-Shaped Conveyor Guide Rail Brackets - Offset Type

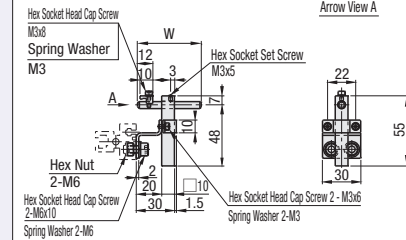


RoHS 10

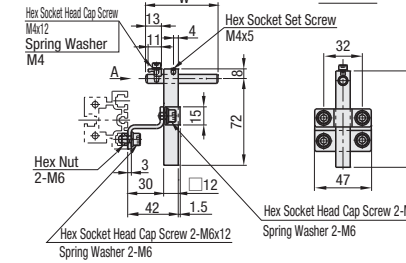
**CGH**  
(W=50,60)

**CGHL**  
(W=100)

No.55



No.80



No.55 ~ 80 have different bolt size for the conveyor mount part. Select an appropriate bolt according to the conveyor you are using.

Material: SUS304

Part Number	Type	No.	W	Unit Price
CGH (W=50,60)		55	50	
		70	60	
		80	60	
CGHL (W=100)		55	100	
		70	100	
		80	100	

Ordering Example  
Part Number  
Type No.  
CGH 55

Alterations  
Part Number  
Type No. - (CL)  
CGH 70 - CL

Alterations	Code	Spec.
Change to Product with Clamp Lever 	CL	Hex socket set screws are replaced with the clamp lever (Orange, CLDMC4-8-M equivalent). ⊗ Not applicable to CGH55/CGHL55

Example

