

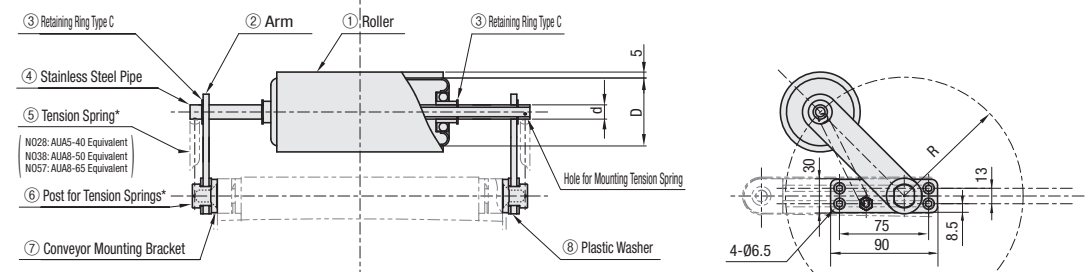
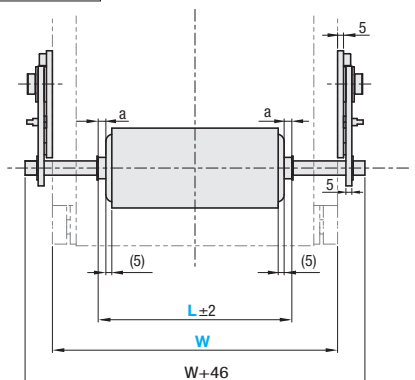
Conveyor Press Rollers

Standard Type

■ Features: Suitable for conveying printed materials. Roller sizes and urethane type can be selected according to the workpiece.



Type	① Roller						
	Fixed	Spring Loaded	Material		Hardness	Color	
CHRS	COBS	Core	Wheel	Lining	Shore 90	Natural Color Gray	
CHRU	COBU	STKM	Steel	Urethane Antistatic Urethane			
	② Arm	③ Retaining Ring Type C	④ Stainless Steel Tube	⑤ Tension Spring	⑥ Post for Tension Springs	⑦ Conveyor Mounting Bracket	⑧ Plastic Washer
Material	A6061	SUS304-CSP	SUS304	SUS304-CSP	SUS304		Polyacetal
Surface Treatment	Clear Anodize						



① Roller is fixed on the center.
 * ⑤ Tension Spring and ⑥ Tension Spring Post are included with COBS and COBU only.

Part Number	L	W 1mm Increment	D	d	a	R	Unit Price															
							CHRS, COBS					CHRU, COBU										
TYPE	No						L															
							113	163	213	263	313	413	513	113	163	213	263	313	413	513		
Fixed CHRS CHRU	28	113	150	28.6	8.2	3.5	60															
	38	163		38.1	12.2	5.5	75															
	57	213		57.2	12.2	6.5	100															
Spring Loaded COBS COBU	28	313	550	28.6	8.2	3.5	60															
	38	413		38.1	12.2	5.5	75															
	57	513		57.2	12.2	6.5	100															

Ordering Example: Part Number - L - W
 Type No - L - W
 CHRU 57 - 313 - 500

Alterations Mounting Bracket Hole Diameter Specified

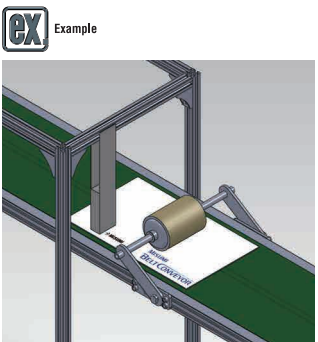
Code TB

The hole diameter of the conveyor mounting bracket is changed to 1 mm increment.

TB	B	G
1mm Increment	Selection	0.5mm Increment
12-21	30	4.5-9
12-41	50	

When B = 30, TB + G ≤ 25.5; When B = 50, TB + G ≤ 45.5

Ordering Code TB15-B30-G4.5



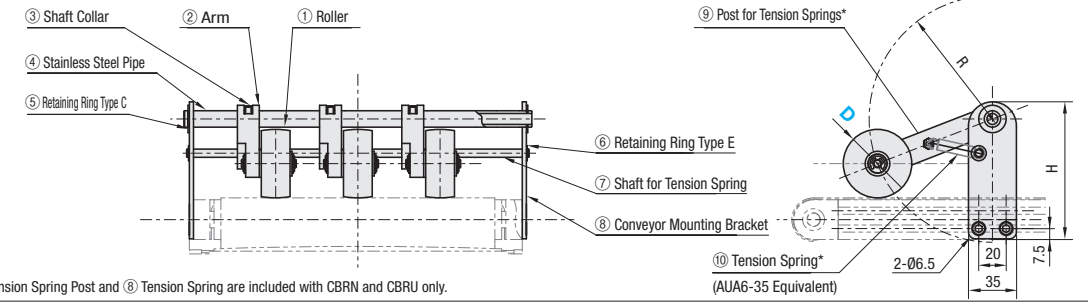
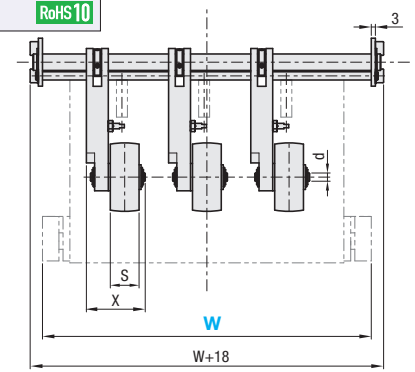
Conveyor Press Rollers

Small Rollers

■ Features: Suitable for conveying printed materials. Roller quantity and material can be selected according to the workpiece.



Type	① Roller								
	Fixed	Spring Loaded	Material		Hardness	Color			
CKRN	CBRN	Core	Wheel	Lining	Shore 90	Natural Color Gray			
CKRU	CBRU	Nylon	Steel	Urethane Antistatic Urethane					
	② Arm	③ Shaft Collar	④ Stainless Steel Tube	⑤ Retaining Ring Type C	⑥ Retaining Ring Type E	⑦ Tension Spring Shaft	⑧ Conveyor Mounting Bracket	⑨ Post for Tension Springs	⑩ Tension Spring
Material	A6061	SUS304	SUS304	SUS304-CSP	SUS304	SUS304	SUS304	SUS304	SUS304-CSP
Surface Treatment	Clear Anodize								



* ⑦ Tension Spring Post and ⑩ Tension Spring are included with CBRN and CBRU only.

Part Number	Roller	W 1mm Increment	d	S	X	H	R	Unit Price												
								CKRN, CBRN					CKRU, CBRU							
TYPE	D							W												
								45-100	101-200	201-300	301-400	401-550	45-100	101-200	201-300	301-400	401-550			
Fixed CKRN CKRU	32	1 2 3	45	5	14	35	90													
	50			6.7	21	43	100													
	75			8.2	25	51	120													
Spring Loaded CBRN CBRU	32	1 2 3	550	5	14	35	90													
	50			6.7	21	43	100													
	75			8.2	25	51	120													

Additional Price

D	Additional Price	
	CKRN, CBRN	CKRU, CBRU
	Number of Rollers	
	2	3
32		
50		
75		

Ordering Example: Part Number - Number of Rollers - W
 Type D - Number of Rollers - W
 CKRN 75 - 3 - 300

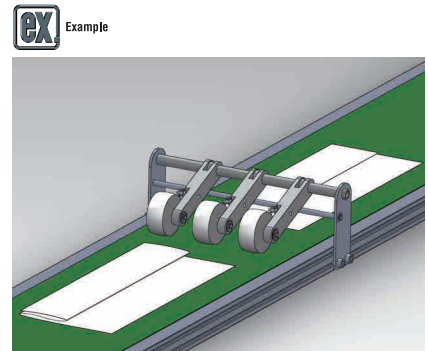
Alterations Mounting Bracket Mounting Holes Added

Code TT

The number of mounting holes for the conveyor mounting bracket is changed to 4.

D	TT
32	8-24
50	8-34
75	8-54

Ordering Code TT15



Alterations: Part Number - Number of Rollers - W - (TT)
 Type D - Number of Rollers - W - (TT)
 CBRN 50 - 2 - 200 - TT15