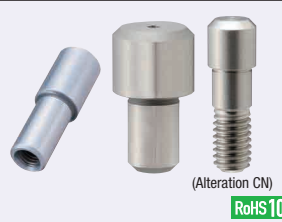


Locating Pins - Large Flat Head

D and P Selectable Tolerance

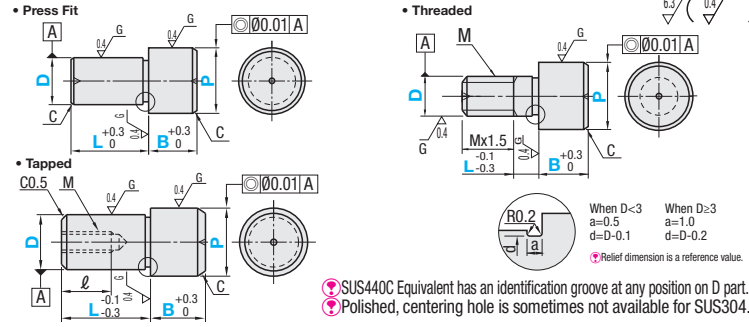
■ **Features:** Large Flat Head with each dimension configurable. Selectable tolerance on both ends.



Material No.	Material	Surface Treatment	Hardness	Type		
				Press Fit	Tapped	Threaded
①	SKS3 Equivalent	-	Treated Hardness: 60 ~ 63HRC	KFFA	KFFTA	KFFNA
②	SKS3 Equivalent	Hard Chrome Plating	Treated Hardness: 50 ~ 55HRC Plating Hardness: 750HV ~	GKFFA	GKFFTA	GKFFNA
③	SKS3 Equivalent	-	-	BKFFA	BKFFTA	-
④	SUS304	-	-	SKFFA	SKFFTA	SKFFNA
⑤	SUS40C Equivalent	-	Treated Hardness: 50 ~ 55HRC	CKFFA	CKFFTA	-

Tolerance Selection

D or P	Standard Grade					Precision Grade	
	M	P	G	H	S	A	B
1.00	+0.008	+0.012	-0.002	0	-	-	-
3.00	+0.002	+0.006	-0.008	-0.010	-	-	-
3.01	+0.012	+0.020	-0.004	0	-	-	-
6.00	+0.004	+0.012	-0.012	-0.012	-	-	-
6.01	+0.015	+0.024	-0.005	0	0	+0.005	0
10.00	+0.006	+0.015	-0.014	-0.015	-0.01	0	-0.005
10.01	+0.018	+0.029	-0.006	0	-	-	-
18.00	+0.007	+0.018	-0.017	-0.018	-	-	-
18.01	+0.021	+0.035	-0.007	0	-	-	-
30.00	+0.008	+0.022	-0.020	-0.021	-	-	-



Press Fit

Part Number	Type	D Tolerance	P Tolerance	D	P	L	B	C	Unit Price Standard Grade													
									0.01mm Increment	1mm Increment	0.1mm Increment	① KFFA	② GKFFA	③ BKFFA	④ SKFFA	⑤ CKFFA						
KFFA GKFFA* BKFFA SKFFA CKFFA	M P G H *A *B	S M P G H *A *B	1	1.50~2.50	2, 3	2.0~5.0	0.1															
			2	2.50~4.00	2~6	2.0~10.0	0.5															
			3	3.50~6.00	3~6	2.0~10.0																
			4	4.50~7.00	4~8	2.0~10.0																
			5	5.50~8.00	5~10	2.0~10.0																
			6	6.50~10.00	6~12	2.0~12.0																
			8	9.00~13.00	8~16	2.0~15.0																
			10	11.00~15.00	10~20	3.0~20.0																
			12	13.00~18.00	12~24	3.0~30.0																
			13	14.00~18.00	13~26	5.0~30.0																
			16	17.00~25.00	16~32	5.0~35.0																
			20	22.00~30.00	20~40	5.0~40.0																

*Hard Chrome Plating products are not available for * marked Precision Grade (Precision Grade A and B).

Tapped

Part Number	Type	D Tolerance	P Tolerance	D	P	L	B	M	*Tightening Torque N·cm	ℓ	C	Unit Price										
												0.01mm Increment	1mm Increment	0.1mm Increment	① KFFTA	② GKFFTA	③ BKFFTA	④ SKFFTA	⑤ CKFFTA			
KFFTA GKFFTA BKFFTA SKFFTA CKFFTA	M P G H	S M P G H	6	6.50~10.00	6~12	2.0~12.0	M3	98	5	1												
			6T					M2.6	-	4												
			8	9.00~13.00	8~16	2.0~15.0	M5	461	8													
			8T					M4	225	6												
			10	11.00~15.00	10~20	3.0~20.0	M5	461	8													
			12	13.00~16.00	12~24	3.0~30.0	M4	225	6													
			12T					M5	461	8												
			13	14.00~18.00	13~26	5.0~30.0	M8	1911	10													
			13T					M6	784	9												
			16	17.00~25.00	16~32	5.0~35.0	M8	1911	12													
			16T					M6	784	9												
			20	22.00~30.00	20~40	5.0~40.0	M8	1911	12													
			20T					M6	784	9												

* Pins of D dimension with T have one size smaller thread diameter and larger wall thickness. (Actual D dimension is the number without "T".)

* Note the strength of under-head part. P.1566. * Please confirm pilot hole depth on P.1566. Holes may go through.

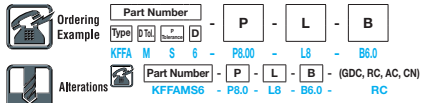
* The tightening torque (ref. value) for hardened products is strength class 8.8. (See technical data on P.2297.) Not applicable when using locking materials or lock washers.

Threaded

Part Number	Type	D Tolerance	P Tolerance	D	P	L	B	M	*Tightening Torque N·cm	ℓ	C	Unit Price Standard Grade										
												0.01mm Increment	1mm Increment	0.1mm Increment	① KFFNA	② GKFFNA	③ SKFFNA					
KFFNA GKFFNA* SKFFNA	M P G H *A *B	S M P G H *A *B	3	3.50~6.00	2~6	3.0~10.0	0.5	M3	98													
			4	4.50~7.00	2~8	4.0~10.0																
			5	5.50~8.00	3~10	4.0~10.0																
			6	6.50~10.00	3~10	4.0~12.0																
			8	9.00~13.00	5~10	5.0~15.0																
			10	11.00~15.00	5~15	6.0~20.0																
			12	13.00~18.00	8~15	6.0~20.0																
			16	17.00~25.00	8~20	7.0~20.0																
			20	22.00~30.00	10~20	10.0~20.0																

*Hard Chrome Plating products are not available for * marked Precision Grade (Precision Grade A and B).

* The tightening torque (ref. value) for hardened products is strength class 8.8. (See technical data on P.2297.) Not applicable when using locking materials or lock washers.



⚠ Precision Grade Price
When A, B tolerance is selected, multiply by 1.1 to the above unit price.

Alterations	Insertion Guide	Sphere Tip	Air Vent	C Chamfered Size
Code	GDC	RC	AC	CN
Spec.	Adds the insertion guide. Ordering Code: GDC Insertion Guide D: 0.01 D ℓ 3~12 1 13~20 2 ⚠ Not applicable when D≤2	Changes the relief to R0.5. Ordering Code: RC RC (R0.5) ⚠ Applicable when P-D≥2	Adds an air vent. Ordering Code: AC D: 0.15	Changes C Chamfering at P dimension part to 0.5 or less. Ordering Code: CN C0.5 or Less ⚠ Press Fit D≥3 ⚠ Threaded Applicable when D≥4 ⚠ Not applicable to D dimension part.

Locating Pins - Large Flat Head

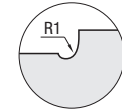
Side Locating

■ **Features:** Grinding undercut shape and the pin material have been changed to give higher immunity against breaking for lateral load applications.

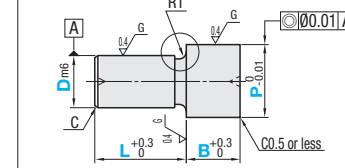


Material No.	Material	Surface Treatment	Hardness	Type		
				Press Fit	Tapped	Threaded
①	SCM415	-	Carburized 55HRC- (Depth: 0.7 ~ 0.8)	FPYT	FPYTM	FPYN
②	SUS304	-	-	SFPYT	SFPYTM	SFPYN

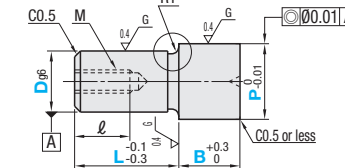
Surface Finish Relief



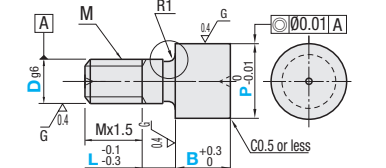
Press Fit



Tapped



Threaded



Press Fit

Part Number	Type	D	D dim. Tolerance m6	P	L	B	C	Unit Price		
								① SCM415 Carburized FPYT	② SUS304 SFPYT	
FPYT SFPYT	M P G H	S M P G H	6	+0.012	10.00~13.00	6~12	2.0~15.0	1		
			8	+0.015	12.00~15.00	8~16	3.0~20.0	1.5		
			10	+0.006	14.00~16.00	10~20	3.0~30.0			
			12		16.00~18.00	12~24	5.0~30.0	2		
			13	+0.018	17.00~20.00	13~26	5.0~30.0			
			16	+0.007	20.00~25.00	16~32	5.0~35.0			
			20	+0.021	24.00~30.00	20~40	5.0~40.0	3		
				+0.008						

Tapped

Part Number	Type	D	D dim. Tolerance g6	P	L	B	M	*Tightening Torque N·cm	ℓ	Unit Price		
										① SCM415 Carburized FPYTM	② SUS304 SFPYTM	
FPYTM SFPYTM	M P G H	S M P G H	6	-0.004	10.00~13.00	9~12	2.0~15.0	M2.6	-	4		
			8	-0.005	12.00~15.00	12~16	3.0~20.0	M4	225	6		
			10	-0.014	14.00~16.00	12~20	3.0~30.0					
			12		16.00~18.00	12~24	5.0~30.0					
			13	-0.006	17.00~20.00	16~26	5.0~30.0					
			16	-0.017	20.00~25.00	16~32	5.0~35.0					
			20	-0.007	24.00~30.00	20~40	5.0~40.0					
				-0.020								

* Note the strength of under-head part. P.1566

* The tightening torque (ref. value) for hardened products is strength class 8.8. (See technical data on P.2297.) Not applicable when using locking materials or lock washers.

Threaded

Part Number	Type	D	D dim. Tolerance g6	P	L	B	M	*Tightening Torque N·cm	ℓ	Unit Price	
										① SCM415 Carburized FPYN	② SUS304 SFPYN
FPYN SFPYN	M P G H	S M P G H	6	-0.004	10.00~13.00	3~10	2.0~15.0	M6	784		
			8	-0.005	12.00~15.00	5~10	3.0~15.0	M8	1911		
			10	-0.014	14.00~16.00	5~15	3.0~20.0	M10	3783		
			12	-0.006	16.00~18.00	8~15	5.0~20.0	M12	6605		
			16	-0.017	20.00~25.00	8~20	5.0~20.0	M16	16366		
			20								