

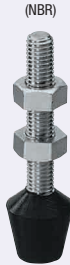
Tips for Clamps

Components for Toggle Clamps

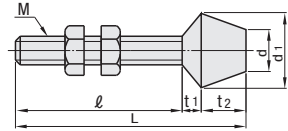
Two-Pronged Clamp Arms, Clamp Arm Extension Kits, Clamp Brackets

Features: Bolts for Toggle Clamps. In addition to the standard type, we offer a variety of types of bolts that are highly capable of resisting abrasion, or buffering impacts from a workpiece.

Tips (Standard)



Type	Tip		Bolt	
	Material	Hardness	Material	Surface Treatment
MC4-15	NBR	Shore A70	Steel	Trivalent Chromate
MCS4-32			Stainless Steel	-

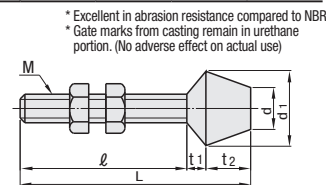


Part Number	M-ℓ (Thread Effective Length)	L (O.A.L)	t1	t2	d	d1	Unit Price
MC4-15	4-16	25	2	7	6.5	11.2	
MC4-32	4-33	42	2	7	6.5	11.2	
MC5-27	5-28	38	2	8	11.5	13.8	
MC5-69	5-70	80	2	8	11.5	13.8	
MC6-37	6-37	51	2	12	10	16	
MC6-62	6-62	76	2	12	10	16	
MC6-87	6-87	101	2	12	10	16	
MC8-45	8-47	63	2.5	13.5	13	19	
MC8-75	8-77	93	2.5	13.5	13	19	
MC8-105	8-107	123	2.5	13.5	13	19	
MC10-59	10-61	85	5.5	18.5	16	24	
MC12-66	12-66	100	9	25	22	32	

Tips (Standard)



Type	Tip		Bolt	
	Material	Hardness	Material	Surface Treatment
TGUB	Urethane*	Shore A90	Steel	Trivalent Chromate



* Excellent in abrasion resistance compared to NBR.
* Gate marks from casting remain in urethane portion. (No adverse effect on actual use)

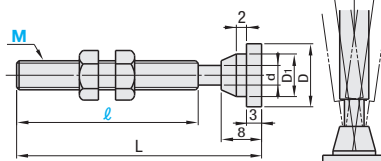
Part Number	M-ℓ (Thread Effective Length)	L (O.A.L)	t1	t2	d	d1	Unit Price
MCS4-15	4-16	25	2	7	6.5	11.2	
MCS4-32	4-33	42	2	7	6.5	11.2	
MCS6-37	6-37	51	2	12	10	16	
MCS8-45	8-47	63	2.5	13.5	13	19	

Part Number	M-ℓ	L	t1	t2	d	d1	Unit Price
TGUB	4-13	23	2	8	8	12	
	4-32	42	2	8	8	12	
	6-37	51	2	12	10	16	
	6-87	101	2	12	10	16	
	8-49	67	5	13	12	19	
	8-105	123	5	13	12	19	

Tips (Universal)



Part Number	Tip		Bolt	
	Material	Surface Treatment	Material	Surface Treatment
TGAR	SUM24	Black Oxide	SUM24	Black Oxide
STGAR	SUS304	-	SUS304	-

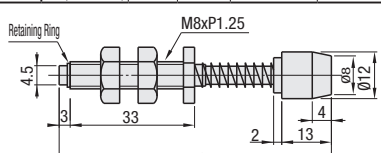


Part Number	M-ℓ	L	D	D1	d	Unit Price
TGAR	4-13	23	13	7	2.2	
STGAR	4-32	42	13	7	2.2	
	6-37	51	16	9	3.2	
	8-49	67	16	11	5.2	

Tips (Rubber Bolt with Springs)



Part Number	Tip		Bolt		Spring
	Material	Hardness	Material	Surface Treatment	Material
TGSP	NBR (Nitrile Rubber)	Shore A70	SS400	Black Oxide	SUS304-WPB
STGSP	NBR (Nitrile Rubber)	Shore A70	SUSXM-7	-	SUS304-WPB

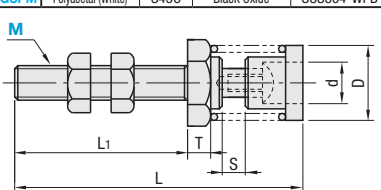


Part Number	Max. Stroke	Load N (kgf)	Unit Price
TGSP	4	30 (3)	
STGSP	4	30 (3)	

Tips (Rubber Bolt with Spring and Resin Pad)

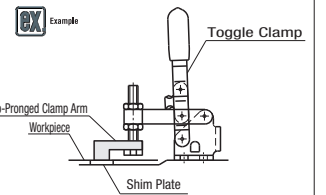
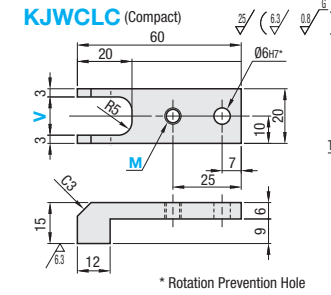
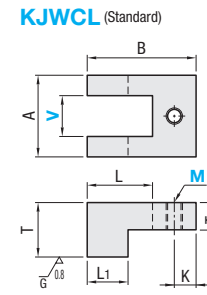


Part Number	Pad		Bolt		Spring
	Material	Material	Surface Treatment	Material	Material
TGSPM	Polycetal (White)	S45C	Black Oxide	SUS304-WPB	



Part Number	M	S (Stroke)	min. Load (N)	max. Load (N)	Unit Price
TGSPM	4	3	19.4	29.1	
	6	4	21.8	30.5	
	8	8	18.8	32.4	

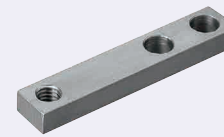
M	L	L1	T	D	d
4	34.5	20	2	12	5.6
6	50	30	4	13	7.2
8	60	30	5	14	7.8



Material: SS400

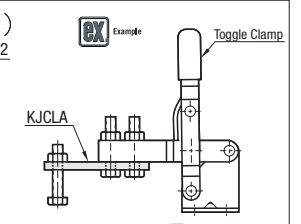
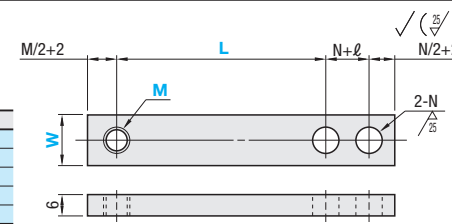
Part Number	Type	M Selection	A	B	L	L1	K	T	T1	Unit Price	
KJWCL	10	4 6	20	30	18	10	6	15	7		
	15	6 8	30	40	24	15	8	20	10		
	20	8 10	40	50	30	20	10	25	12		
KJWCLC	14	4 6 8	(Described in the Drawing)								

Clamp Arm Extension Kits



KJCLA

M	N	ℓ
4	4.5	10
5	5.5	10
6	6.5	12
8	9	15
10	11	18



Material: SS400

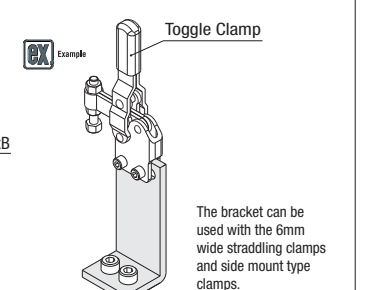
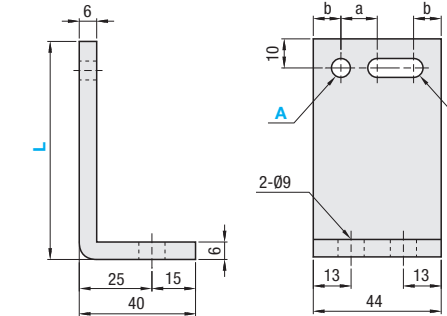
Part Number	Type	W	L Selection						M Selection					Unit Price				
KJCLA	10	16	10	20	30	40	50	60	4	5	6	L10	L20	L30	L40	L50	L60	
									8	10	-							

* M6, 8 or 10 is not selectable for L10. (due to an interference with the holes or the mounted bolt nuts)

Clamp Brackets



KJCLB



The bracket can be used with the 6mm wide straddling clamps and side mount type clamps.

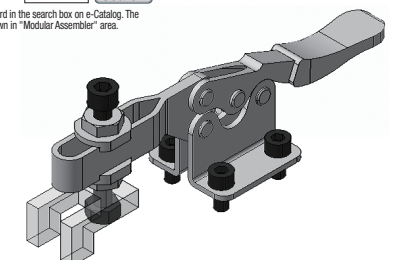
Material: SS400 Black

Part Number	Type	No.	L Selection					Hole Dia.		Hole Pitch		Unit Price				
KJCLB	6	6	50	75	100	125	150	A Selection	B	a	b	L50	L75	L100	L125	L150
								6.5	19	13.5	9	480	550	660	750	860
								8.5	21	12.5	9.5					

Ordering Example: Part Number - L - M - A
 KJWCLC14 - L60 - M6 - A6.5
 KJCLA10 - L60 - M6 - A6.5
 KJCLB6 - L100

Example: Combination of these app. examples can be selected on our website. Selection Procedure Details P87

e-Catalog Search Keyword #MA551 Search
 *Enter the search keyword in the search box on e-Catalog. The search result will be shown in "Modular Assembler" area.



Ordering Example Part Number MC4-32 MCS6-37

Alterations Part Number - L - M - A - (STC) KJCLA10 - L60 - M6 - STC Express Service is not available.

Alterations	Code	Spec.
Additional Surface Treatment	STC	Adds black oxide surface treatment.