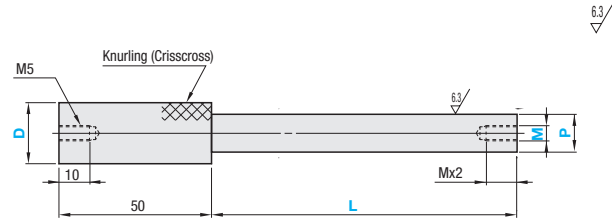
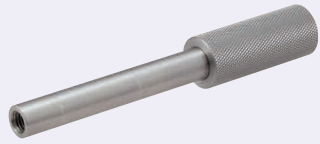


Tapped Pins for Inspection Jigs

Features: Tapped Pins clamp workpiece to measure the dimensions. Use alteration KC when using a bushing as a guide.

Tapped Pins

Material	Hardness	Type
S45C Equivalent	-	KJPNM
S45C Equivalent	45HRC~	KJPNMH



RoHS 10

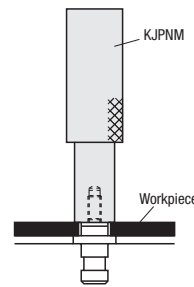
Handles and pins may be joined with an adhesive. Heat or strong force may cause separation.
P dim. tolerance is a general tolerance. For accuracy enhancement, specify the alteration KC.

Part Number	Type	D	P	L	M (P-4≥M)	Unit Price			
						KJPNM		KJPNMH	
			0.01mm Increment	1mm Increment		L10~100	L101~150	L10~100	L101~150
(S45C)	KJPNM	10	8.00~10.00	When P<12 10~100 When P≥12 10~150	4 5 6 8 10	-	-	-	-
		12	8.00~10.00						
(S45C Hardened)	KJPNMH	20	10.00~18.00						
		25	14.00~23.00						

For D10, knurling may extend slightly to the pin part when difference from P dimension is none or small.

Ordering Example: Part Number (TYPE, D) - P - L - M
KJPNM20 - P12.00 - L80 - M8

Example: ex Clamps objects.



Alterations: Part Number - P - L - M - (CH, KH, etc.)
KJPNMH16 - P9.30 - L100 - M5 - KC

Alterations	Code	Spec.	Alterations	Code	Spec.
Chain Alterations 	CH	Loss-proof chain (length 600mm) is attached to gauge body. For chains only, see P.1862.	Additional Surface Treatment (Electroless Nickel Plating)	MN	Electroless nickel plating is applied. Combination with STC is not available.
P Dimension Tolerance 	KC	Changes P dimension tolerance to -0.02. There may be a relief groove between handle part and pin part.	Additional Surface Treatment (Black Oxide)	STC	Adds black oxide surface treatment. Combination with MN is not available.
Engraving of P Dimension 	KH	Machines flats on knurled head and engraves P dimension (with the character orientation arbitrary).	Handle Length 	ZC	Changes handle length 50 to 30 or 40. Ordering Code ZC30 Applicable only when pin length L≤30.

Caution when making alterations to engraving (KH)
If the pin and the knurled part are joined with an adhesive, 10mm of the tip is not machined flat because the tip is thin.

Slot Pins for Inspection Components

Tapered / Tapered, No Step

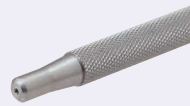
Features: Tapered, No Step Type has no groove at joint and prevents snagging thin workpieces such as sheet metal. For compatible bushings, see P.1841~P.1845.

Tapered

D=8~25 D=10L~20L

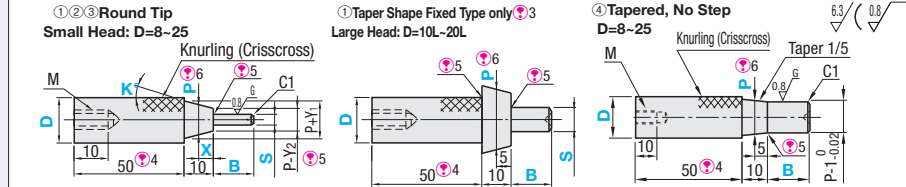


Tapered, No Step



RoHS 10

Material	Hardness	Taper Shape Fixed		Angle Selection		X dimension Configurable		Tapered, No Step	
		S _{0.02}	Sg6	S _{0.02}	S _{0.02}	S _{0.02}	S _{0.02}	S _{0.02}	S _{0.02}
S45C Equivalent	-	KJPD	KJPGD	KJPKT	KJPKT	KJPKT	KJPKT	KJPKT	KJPKT
S45C Equivalent	45HRC~	KJPDTH	KJPGDTH	KJPKTH	KJPKTH	KJPKTH	KJPKTH	KJPKTH	KJPKTH
SUS304	-	KJPDTS	KJPGDTS	KJPKTS	KJPKTS	KJPKTS	KJPKTS	KJPKTS	KJPKTS
SUS440C or 13Cr stainless	45~50HRC	KJPDTC	KJPGDTC	KJPKTC	KJPKTC	KJPKTC	KJPKTC	KJPKTC	KJPKTC



S	g6
3.00	-0.002
3.01 - 6.00	-0.004
6.01 - 10.00	-0.012
10.01 - 18.00	-0.006
18.01 - 29.00	-0.017

- 1 For electroless nickel plating, specify the alteration MN.
- 2 SUS440C or 13Cr stainless has an identification groove on D part.
- 3 Dimensions not specified are the same as Small Head Type.
- 4 For shorter handle length, specify the alteration ZC.
- 5 There is a relief groove that is approx. 1 mm wide (approx. 0.2 mm deep).

P dimensioned section (tapered area) is not ground.
Large Head Type (D=10L~20L) is available for S45C only.

① Taper Shape Fixed

Part Number	Type	D	P	S (P-1≥S)	B	K°	X	Y1, Y2	M	Unit Price								
										S _{0.02}		Sg6		Sg6		Sg6		
										KJPD	KJPDTH	KJPDTS	KJPDTC	KJPGD	KJPGDTH	KJPGDTS	KJPGDTC	
(S45C)	KJPD	8	4.00~6.00	3.00~5.00	When S<8 5~25	Tapered 1/5	5	1	M4	-	-	-	-	-	-	-	-	-
(S45C Hardened)	KJPDTH	12	5.00~10.00	3.00~9.00						-	-	-	-	-	-	-	-	-
(SUS304)	KJPDTS	16	8.00~14.00	3.00~13.00	When S≥8 5~40	Tapered 1/5	5	1	M5	-	-	-	-	-	-	-	-	-
(SUS440C or 13Cr stainless)	KJPDTC	20	10.00~18.00	5.00~17.00						-	-	-	-	-	-	-	-	-

② Angle Selectable (X dim. fixed) ③ X Dimension Selectable Type (Angle K° is fixed)

Part Number	Type	D	P	S	B	K°	X	Y1, Y2	Condition	M	Unit Price								
											Angle Selection		X Dimension Selectable						
											KJPKT	KJPKTH	KJPKTS	KJPKTC	KJPKT	KJPKTH	KJPKTS	KJPKTC	
(S45C Equivalent)	KJPKT	10	4.21~7.58	3.00~5.98	5~25	10	Tapered 1/5	1.8 when K°=10 2.7 when K°=15	When K°=10, S-P-2.8 and D-P-2.8 When K°=15, S-P-3.7 and D-P-3.7	M5	-	-	-	-	-	-	-	-	-
(S45C Hardened)	KJPKTH	12	5.00~9.58	3.00~7.98							-	-	-	-	-	-	-	-	-
(SUS304)	KJPKTS	16	8.00~13.58	4.00~11.98	For SUS304, B≤Sx5	15	1/5	When X=1, Y1=1.8 and Y2=0.2 When X=2, Y1=1.6 and Y2=0.4 When X=3, Y1=1.4 and Y2=0.6	When X=1, S-P-1.2 and D-P-2.8 When X=2, S-P-1.4 and D-P-2.6 When X=3, S-P-1.6 and D-P-2.4	M5	-	-	-	-	-	-	-	-	-
(SUS440C or 13Cr stainless)	KJPKTC	25	15.00~22.58	8.00~20.98							-	-	-	-	-	-	-	-	-

④ Tapered, No Step

Part Number	Type	D	P	B	M	Unit Price	
						KJPDTH	KJPDTH
(S45C)	KJPDTH	8	4.00~6.00	When P-1<8 5~25	M4	-	-
		10	4.00~8.00			-	-
(S45C Hardened)	KJPDTH	12	5.00~10.00	When P-1≥8 5~40	M5	-	-
		16	8.00~14.00			-	-
		20	10.00~18.00	-	-	-	-
		25	15.00~23.00	-	-	-	-

Ordering Example: Part Number (TYPE, D) - P - S - B - K - X
KJPDTH20 - P15.00 - S10 - B13 - K10 - X3

Alterations: Part Number - P - S - B - K - X - (CH, KH, ZC - NMN - etc.)
KJPDTH16 - P12.00 - S10.00 - B15 - NMN - ZC30 - KF - KJPDTH10

Alterations	Code	Spec.
Additional Surface Treatment (Electroless Nickel Plating)	MN	Electroless nickel plating is applied. Applicable to Material S45C only. Combination with STC is not available.
Additional Surface Treatment (Black Oxide)	STC	Adds black oxide surface treatment. Applicable to Material S45C only. Combination with MN is not available.
Engraving of the Specified Characters	KF	Engraves alphabet or number. Printable Character: alphanumeric, period, slash, asterisk, underscore, hyphen, equals, greater than, less than, less than or equal to, greater than or equal to, percent, hash, dollar sign, at sign, ampersand, caret, tilde, backslash, forward slash, double quote, single quote, apostrophe, backtick, grave accent, circumflex accent, diaeresis, ring, degree, registered trademark symbol, copyright symbol, trademark symbol, service mark symbol, registered service mark symbol, registered trademark symbol, registered service mark symbol, registered trademark symbol, registered service mark symbol. Not applicable to handle length 10. No symbols, such as a tilde (~), other than those mentioned above may be used for engraving. The pin's orientation to the engraved characters is arbitrary. Engraved on the reverse side when combined with KH. Up to 8 digits max. When combining with other options, enter this last.
Engraving of P Dimension	KH	Machines flats on knurled head and engraves P dimension (with the character orientation arbitrary). Not applicable to handle length 10. Engraved on the reverse side when combined with KF.

Alterations	Code	Spec.
Handle Length 	ZC	Changes handle length 50 to 10, 20, 30 or 40. For handle length 10, there is no tapered hole. Handle length 10 or 20 is available when P≥5 and pin length (10+B or L+10) ≤30. For Large Head Type, only ZC30 and 40 are applicable. For handle length 10, combination with KH and KF is not available.
Chain Alterations 	CH	Loss-proof chain (length 600mm) is attached to gauge body. For chains only, see P.1862.