

# [High Precision] Helicoid Screw, Z-Axis Level Stages

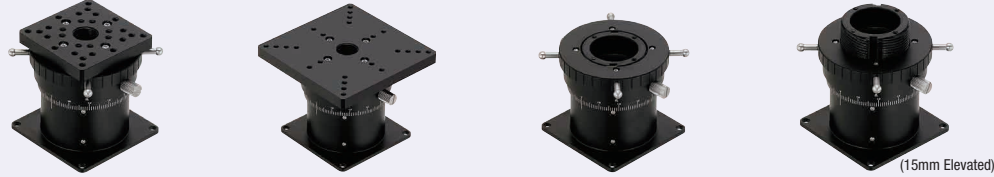
## High Load Capacity

# Standard Lab Jack Horizontal Surface Z-Axis Stages

## High Load Capacity

Features: Longer strokes than the Cross Roller Horizontal Surface Z-Axis Stages and equivalent load capacities to the Lab Jacks. The multi-start screws used prevent plays.

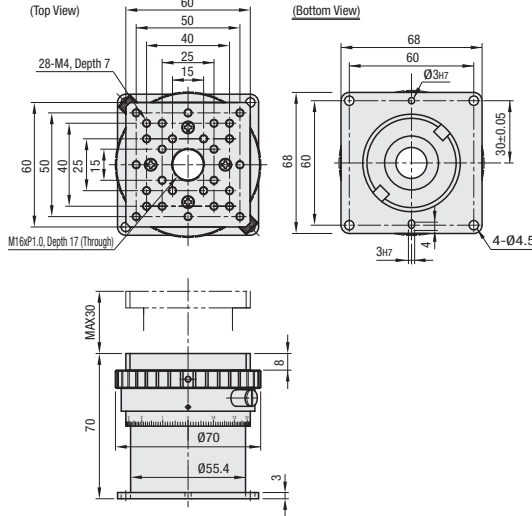
### Helicoid Screw, Horizontal Surface Z-Axis Stages



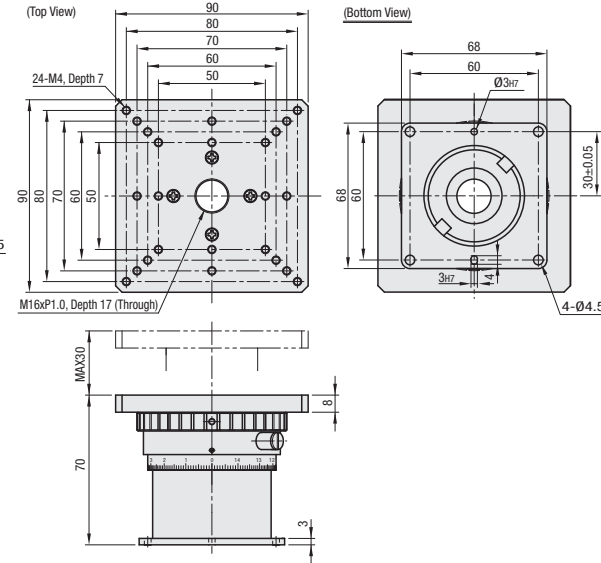
RoHS 10

### With Mount Plates (60, 90 Square)

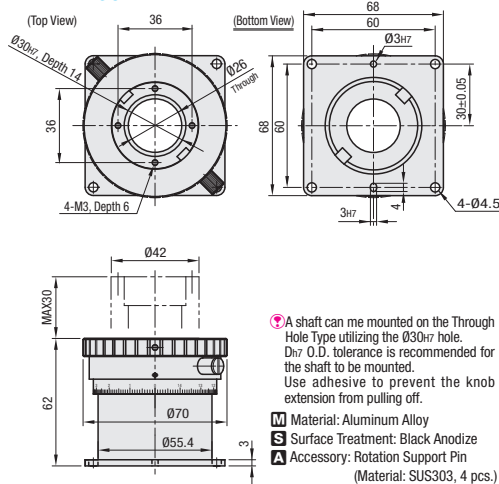
#### ZHRD30-60



#### ZHRD30-90



### Through Hole Type



### [Overview: Helicoid Screw, Horizontal Surface Z-Axis Stages]

- The top plate does not rotate while the stage is in vertical motions.
- The pins (4 included) are removable. Use the stage without pins when the space is limited.
- The scale-engraved dial can be rotated. Set a desired position as the zero position and lock the dial with the set screw.
- Use the scale graduations as references.
- When the ring is rotated, the stage will rise or lower without the top plate rotating.
- Although two locking clamps are provided for better operability, the stage can be locked with a single clamp. (The multi-start screw used is not susceptible to back-driving when used within the given load capacity.)
- Dowel holes are provided on the mounting plate to assure installation accuracies.

A shaft can be mounted on the Through Hole Type utilizing the  $\phi 30_{H7}$  hole. Only O.D. tolerance is recommended for the shaft to be mounted. Use adhesive to prevent the knob extension from pulling off.

M Material: Aluminum Alloy  
S Surface Treatment: Black Anodize  
A Accessory: Rotation Support Pin (Material: SUS303, 4 pcs.)

Part Number Type	No.	Stage Surface (mm)	Travel Distance (mm)	Travel per Rotation (mm)	Load Capacity (N)	Parallelism ( $\mu\text{m}$ )	Weight (kg)	Accessory (4 pcs.)	Unit Price
ZHRD	30-60	60x60	30	(15) *	68.6	50 $\mu\text{m}$	0.50	SCB4-8	
	30-90	90x90					0.59		
	30-T	-					0.42		

\* When elevating the plate with moment load applied to its top face, some play might occur.  
\* The travel distance per knob rotation varies to some extent depending on the current table position.

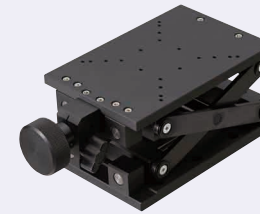
Ordering Example Part Number ZHRD30-60

### Points on Similar Product Comparison | Parallelism: 400 $\mu\text{m}$

Similar Product Pages P.1977

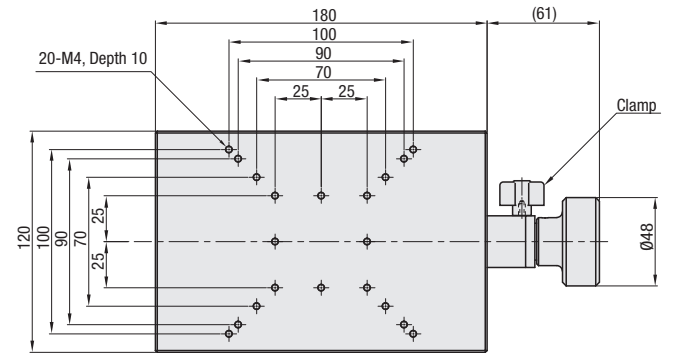
Features: Suitable for Z-axis applications requiring long stroke adjustments. Differ from the existing products in accuracy range. Existing Products: ZLJG (P.1977)

### Horizontal Surface Z-Axis Lab Jack

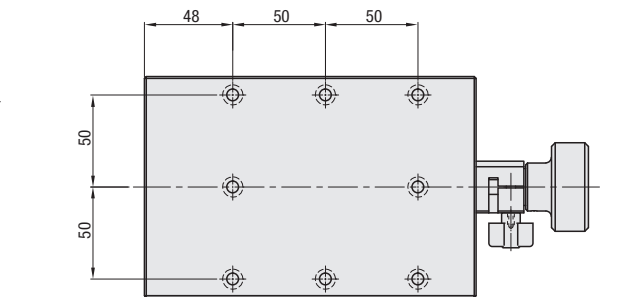
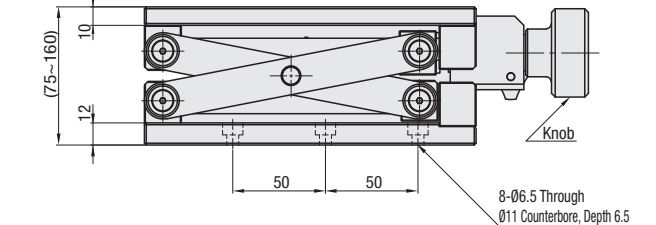
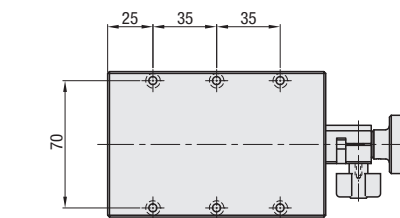
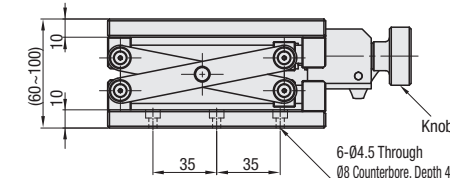
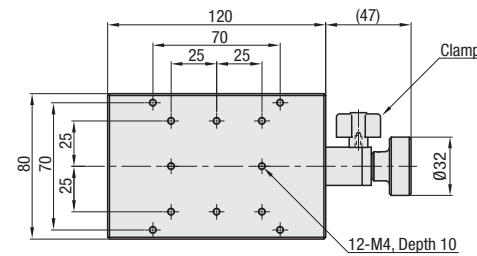


RoHS 10

#### ZLJS120



#### ZLJS80



- Knob operated elevating table with relatively high load capacity. A split clamp on the operating shaft securely holds the load in position.
- Counterclockwise rotation of the knob elevates the stage surface.
- There is some play in the horizontal direction.

M Material: Aluminum Alloy  
S Surface Treatment: Black Anodize

Part Number Type	No.	Stage Surface (mm)	Travel Distance (mm)	Travel per Rotation (mm)	Parallelism ( $\mu\text{m}$ )	Load Capacity (N)	Weight (kg)	Unit Price
ZLJS	80	80x120	40	(2) *	400	68.6	1.25	
	120	120x180	70	(3) *		98	3	

\* The travel distance per knob rotation varies to some extent depending on the current table position.

Ordering Example Part Number ZLJS80