

Limit Switch Flags

Set Screw Type

Proximity Sensor Flags P2070

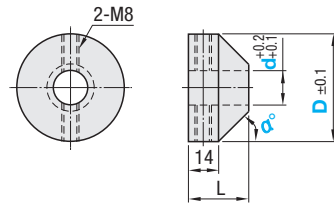
Set Screw Type



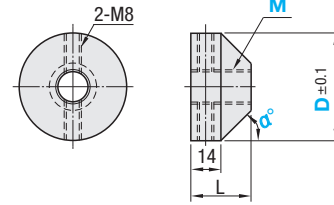
RoHS 10
Part Numbers in [] are not RoHS compliant.

Shape	Shaft Bore	Type	Material	Surface Treatment	Accessory
One End Cone Type	Through Hole	DGSM	S45C	Black Oxide	Set Screw 2 pcs.
Both Ends Cone Type	Through Hole	DGWM			
One End Cone Type	Tapped Hole	DMSM	S45C	Black Oxide	Set Screw 2 pcs. / Brass Ball 2 pcs.
Both Ends Cone Type	Tapped Hole	DMWM			

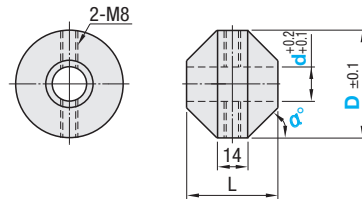
DGSM (One End Cone Type with Through Hole)



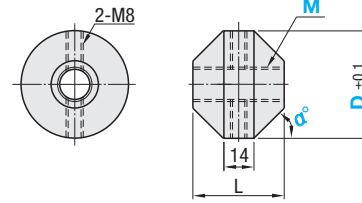
DMSM (One End Cone Type with Tapped Hole)



DGWM (Both Ends Cone Type with Through Hole)



DMWM (Both Ends Cone Type with Tapped Hole)



6.3

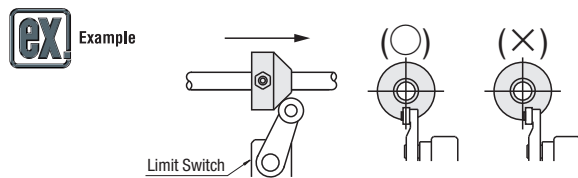
One End Cone / Both Ends Cone Type with Through Hole and Set Screw

Part Number	Type	D	d	alpha	L	Unit Price	Volume Discount Rate
						1 ~ 9 pc(s).	10~50
DGSM		30	10	45	22		
		40			24		
		50	12	16	30	45	28
DGWM		30	10	45	30		
		40			34		
		50	12	16	30	45	42

One End Cone / Both Ends Cone Type with Tapped Hole and Set Screw

Part Number	Type	D	M (Coarse)	alpha	L	Unit Price	Volume Discount Rate
						1 ~ 9 pc(s).	10~50
DMSM		30	10	45	22		
		40			24		
		50	12	16	30	45	28
DMWM		30	10	45	30		
		40			34		
		50	12	16	30	45	42

Ordering Example: Part Number Type D - d, M - alpha
DGSM 30 - 10 - 45



Limit Switch Flags

With Slit

Proximity Sensor Flags P2070

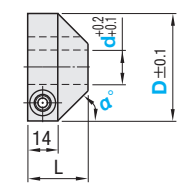
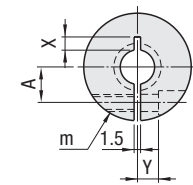
With Slit



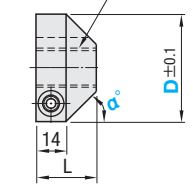
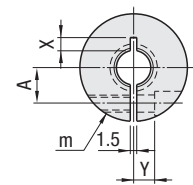
RoHS 10

Shape	Shaft Bore	Type	Material	Surface Treatment	Accessory
One End Cone Type	Through Hole	DGSA	S45C	Black Oxide	Hex Socket Head Cap Screw 1 pc.
Both Ends Cone Type	Through Hole	DGW			
One End Cone Type	Tapped Hole	DMSA	S45C	Black Oxide	
Both Ends Cone Type	Tapped Hole	DMW			

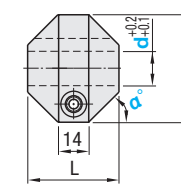
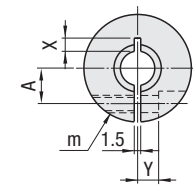
DGSA (One End Cone Type with Through Hole)



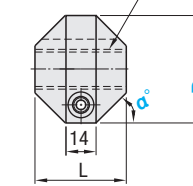
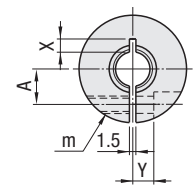
DMSA (One End Cone Type with Tapped Hole)



DGW (Both Ends Cone Type with Through Hole)



DMW (Both Ends Cone Type with Tapped Hole)



6.3

One End Cone / Both Ends Cone Type with Through Hole and Slit

Part Number	Type	D	d	alpha	L	M (Coarse)	A	X	Y	Unit Price	Volume Discount Rate
										1 ~ 9 pc(s).	10~50
DGSA		30	10	45	22	M5	9.0	6	6		
		40			24	M6	14.0	7	8		
		50	12	16	30	45	M8	16.5	10	10	
DGW		30	10	45	30	M5	9.0	6	6		
		40			34	M6	14.0	7	8		
		50	12	16	30	45	M8	16.5	10	10	

One End Cone / Both Ends Cone Type with Tapped Hole and Slit

Part Number	Type	D	M (Coarse)	alpha	L	M (Coarse)	A	X	Y	Unit Price	Volume Discount Rate
										1 ~ 9 pc(s).	10~50
DMSA		30	10	45	22	M5	9.0	6	6		
		40			24	M6	14.0	7	8		
		50	12	16	30	45	M8	16.5	10	10	
DMW		30	10	45	30	M5	9.0	6	6		
		40			34	M6	14.0	7	8		
		50	12	16	30	45	M8	16.5	10	10	

Ordering Example: Part Number Type D - d, M - alpha
DGSA 40 - 12 - 45

