

Strut Clamps

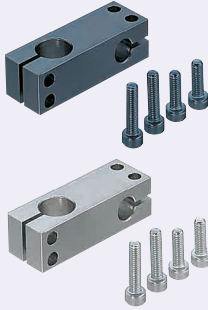
Equal / Unequal Dia., Perpendicular Configuration, Hole Pitch Selectable

■ Features: Selectable shaft pitch between two Posts for Stands.

■ Equal Dia., Perpendicular Configuration, Hole Pitch Selectable

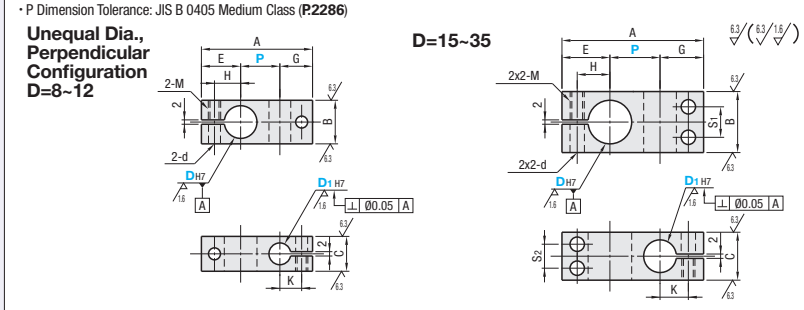
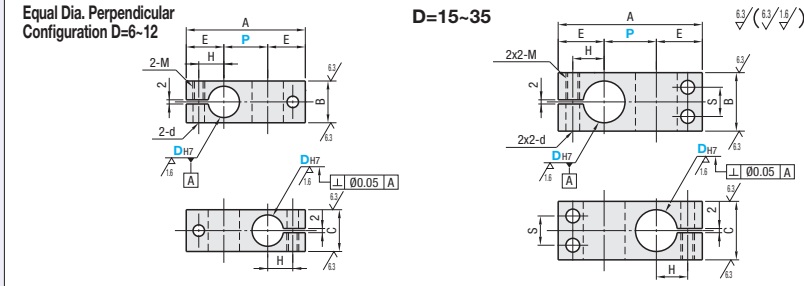


■ Unequal Dia., Perpendicular Configuration, Hole Pitch Selectable



Type		Material	Surface Treatment	Accessory
Equal Dia., Perpendicular Configuration	Unequal Dia., Perpendicular Configuration			
KMKC	KMKD	Steel for General Structure	Black Oxide	Hex Socket Head Cap Screw
MMKC	MMKD		Electroless Nickel Plating	Hex Socket Head Cap Screw (Stainless Steel)
AMKC	AMKD	Aluminum Alloy	Black Anodize	Hex Socket Head Cap Screw
SMKC	SMKD	SUS304	-	Hex Socket Head Cap Screw (Stainless Steel)

⚠ CB screws are included with the black oxide and black anodized products, and SCB screws are included with the other products.



⚠ P Dimension Tolerance: JIS B 0405 Medium Class (P2286)

■ Equal Dia., Perpendicular Configuration, Hole Pitch Selectable

Type	Part Number	DH7	P Selection				A	B	C	E	H	S	M	d
			10	15	20	25								
KMKC MMKC AMKC SMKC	6	+0.012	10	15	20	A=P+(2xE)	10	10	12	7	-	-	M4	4.5
	8	+0.015	10	15	20		12	12	14	8	-	-	-	-
	10	0	15	20	25		16	16	15	9	-	-	M5	5.5
	12	0	20	25	30		22	22	18	12	11	-	-	-
	15	+0.018	20	25	30	25	25	22	15	14	-	-	M6	6.6
	20	0	25	30	40	30	32	25	18	16	-	-	-	-
	25	+0.021	30	40	50	40	40	29	21	20	-	-	M8	9
	30	0	40	50	75	45	45	32	24	24	-	-	-	-
	35	+0.025	50	75	100	150	-	-	-	-	-	-	-	-
	35	0	-	-	-	-	-	-	-	-	-	-	-	-

⚠ For the available sizes, refer to the price list. ⚠ The tolerance and perpendicularity of DH7 are before slitting.
⚠ For mating, g6, f8 shaft tolerances are recommended. Tightening with a long wrench is recommended.

■ Unequal Dia., Perpendicular Configuration, Hole Pitch Selectable

Type	Part Number	DH7	D1H7	P Selection				A	B	C	E	G	H	K	S1	S2	M	d	
				10	15	20	25												
KMKD MMKD AMKD SMKD	8	+0.015	6	+0.012	10	15	20	A=P+E+G	12	9	13	12	8	7	-	-	M4	4.5	
	10	0	8	+0.015	15	20	25		16	12	15	14	9	8	-	-	-	M5	5.5
	12	+0.018	10	0	15	20	25		30	22	18	18	15	12	10	11	9	-	-
	15	0	20	+0.018	20	25	30		40	28	22	22	20	15	13	14	11	-	-
	20	+0.021	15	0	25	30	40	50	32	25	25	20	18	13	16	14	-	-	
	25	0	20	+0.021	30	40	50	75	40	30	29	24	21	16	20	15	-	-	
	30	0	25	0	40	50	75	100	45	35	32	27	24	19	24	20	-	-	
	35	+0.025	50	75	100	150	-	-	-	-	-	-	-	-	-	-	-	-	
	35	0	-	-	-	-	-	-	-	-	-	-	-	-	-	-	-	-	

⚠ D Dimension for SMKD is available up to 30. ⚠ D Dimension 8 is not available for AMKD and SMKD. ⚠ The tolerance and perpendicularity of DH7 and D1H7 are the tolerances before slitting.
⚠ For mating, g6, f8 shaft tolerances are recommended. Tightening with a long wrench is recommended.

Ordering Example

Part Number	-	D1	-	P
Example	KMKC10	-	20	-
	MMKD20	-	15	-

D	Unit Price							
	Equal Dia., Perpendicular Configuration				Unequal Dia., Perpendicular Configuration			
	KMKC	MMKC	AMKC	SMKC	KMKD	MMKD	AMKD	SMKD
6								
8								
10								
12								
15								
20								
25								
30								
35								

D	Included Screw	
	Equal Dia., Perpendicular Configuration	Unequal Dia., Perpendicular Configuration
6	M4-10, 2 pcs.	-
8	M5-12, 2 pcs.	M4-B/M4-12, 1 pc. each
10	M5-15, 2 pcs.	M5-12/M5-10, 1 pc. each
12	M5-15, 2 pcs.	M5-20, 2 pcs.
15	M5-20, 4 pcs.	M5-20/M5-15, 2 pcs. each
20	M6-25, 4 pcs.	M6-25/M6-20, 2 pcs. each
25	M6-30, 4 pcs.	M6-30/M6-25, 2 pcs. each
30	M8-35, 4 pcs.	M8-35/M8-30, 2 pcs. each
35	M8-40, 4 pcs.	M8-40/M8-35, 2 pcs. each

Note that, for some of the types shown here, order might be unable to be received by the MISUMI Indonesia offices.

Height Adjustment Screw Set for Strut Clamps

■ Features: By mounting below the clamp, fine manual adjustments are possible (Max. stroke 5mm recommended). Best suited for adjustments of cameras and sensors.

■ With Double Nuts

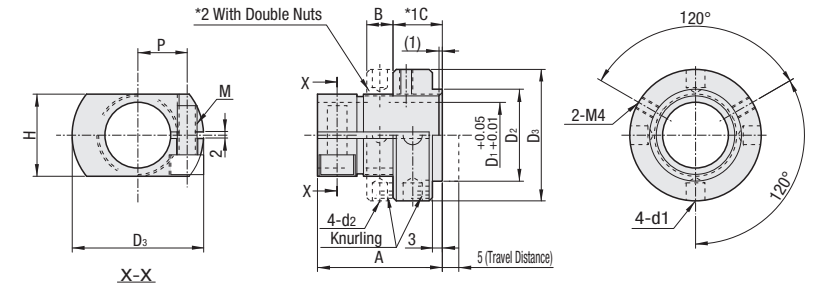


■ Without Double Nuts



Type		Material		Surface Treatment	Accessory
With Double Nuts	Without Double Nuts	Main Body	Nut		
CLAWM	CLAJM	S45C	SUM23 Equivalent	Electroless Nickel Plating	Hex Socket Head Cap Screw (Stainless Steel)
CLAWB	CLAJB			Black Oxide	Hex Socket Head Cap Screw

⚠ CB screws and SCB screws are included with the black oxide products and electroless nickel plating products, respectively.



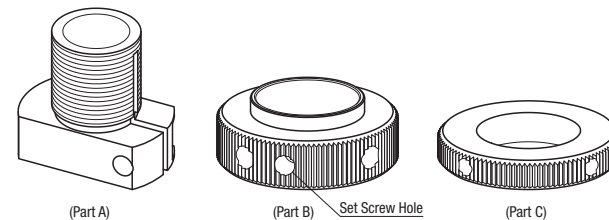
*1. The drawing shows the nut protruding 1mm from the sleeve (Part A).
*2. When the type without the Double Nuts is selected, double nuts will not be included. Only Part A and B are included.
⚠ See the instruction below for Parts A, B, and C.

Part Number	Type	D1	A	B	C	H	P	D2	D3	M	d1	d2	Travel Distance	Included Screw	Unit Price												
															With Double Nuts	Without Double Nuts	Without Double Nuts	Without Double Nuts									
CLAWM CLAWB	CLAJM CLAJB	+0.05 +0.01	30	11	14	9.5	16	28	4	4.6	3.4	5	5	M4-8, 1pc.													
														31	6	12	16	10	18	30	M4-10, 1pc.						
														33	13	20	12	22	35	5	M5-12, 1pc.						
														38	15	25	15	28	40	6	5.7	4.6	M6-15, 1pc.				
														40	8	17	30	17	34	45	6	6.8	5.7	M6-18, 1pc.			
														46	19	36	21	40	55	8	6.8	5.7	M8-20, 1pc.				

⚠ D1 tolerance is before the slit machining. ⚠ Set screw is not included.
⚠ Recommended tolerances of mating shafts for D1: g6, f8.

Ordering Example: Part Number CLAJM20

⚠ How to Use (Adjustable range is 5mm)

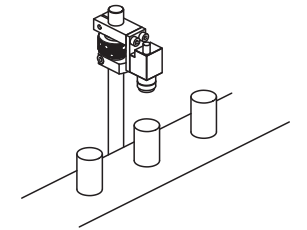


- Mount Part A below a strut clamp to be adjustable.
- Install Part B on the threaded part of Part A.
- After mounting the strut clamp, position Part B with a hand or HEX wrench, adjust the strut clamp to a desired position by utilizing the thread pitch. (Stroke 5mm)
- Secure the strut clamp by tightening the screw. (The Set Screw can be used to temporarily fix the position before the final step ④.)

<Double Nut Type>
Mount Part C on thread part of Part A after the step ①.
Using the Part C, Double Nut mounting is facilitated.
Can be used as a stopper when the strut clamp is loosened.

Example: "Need a little more fine-adjustment in height"
"Need a more economical mechanism for clamp adjustment"
Ideal for these needs.

⚠ Suitable for 1-2mm adjustments of cameras, etc.



⚠ A wrench can be used for heavier objects.

