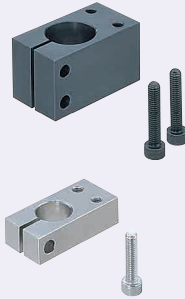


Strut Clamps

Vertical Taps

Features: Clamp type of mounting a device perpendicular to post.

Vertical Taps



RoHS10

Type				Material	Surface Treatment	Accessory
Pitch Selectable		Pitch Configurable				
Standard	Thin	Standard	Thin			
KMN	KMNU	KML	KMLU	Steel for General Structure	Black Oxide	Hex Socket Head Cap Screw
MMN	MMNU	MML	MMLU	Electroless Nickel Plating	Electroless Nickel Plating	Hex Socket Head Cap Screw (Stainless Steel)
AMN	AMNU	-	-	Aluminum Alloy	Black Anodize	Hex Socket Head Cap Screw
-	WMNU	-	-	-	Clear Anodize	Hex Socket Head Cap Screw (Stainless Steel)
SMN	SMNU	-	-	SUS304	-	-

⚠ CB screws are included with the black oxide and black anodized products, and SCB screws are included with the other products.

6.3 / (6.3 / 1.6)

D=8~12

D=15~50

Standard

Thin

⚠ P Dimension Tolerance: JIS B 0405 Medium Class (P2286)

Pitch Selectable

Part Number		DH7	P	A	B	C	C ₁	E	G	H	S ₁	M ₁	S	W	M	d				
Type	Type																			
Standard KMN MMN AMN SMN (D≤30)	Thin KMNU MMNU AMNU WMNU SMNU (D≤30)	8	+0.015	10	29	12	12	-	14	5	8	6	M3	-	2	M5	5.5			
		10	0	11	31	16	16	9	15	-	9	8	M4	-						
		12	0	13	34	-	-	-	16	-	10	-	-	-						
		15	+0.018	17	45	22	22	12	20	8	12	12	M5	12						
		16	0	20	52	28	28	16	22	10	15	16	M6	14						
		20	+0.021	23	58	32	32	19	25	-	18	20	-	16						
		25	0	27	66	40	40	29	29	-	21	25	M8	20						
		30	0	30	72	45	45	32	32	-	24	28	-	20						
		35	+0.025	35	79	50	50	25	34	10	26	30	M8	20				2	M8	9
		40	0	45	103	65	65	32	43	15	33	38	M10	32				3	M10	11

⚠ For the available sizes, refer to the price list. ⚠ D=16 is only applicable to Standard Pitch (except Clear Anodize). ⚠ DH7 tolerance is before the slit machining.
⚠ For mating, g6, f8 shaft tolerances are recommended. Tightening with a long wrench is recommended.

Pitch Configurable

Part Number		DH7	P Selection		A	B	C	C ₁	E	G	H	S ₁	M ₁	S	W	M	d	
Type	Type																	
Standard KML MML	Thin KMLU MMLU	10	+0.015	20	30	A=P+E+G	16	16	9	15	5	9	8	M4	-	2	M5	5.5
		12	0	25	35		22	22	12	20	8	12	12	M5	12			
		15	+0.018	30	40		28	28	16	22	10	15	16	M6	14			
		20	0	32	32		32	32	25	25	10	18	20	-	16			
		30	+0.021	40	50		40	40	19	29	10	21	25	M8	20			
KML	KMLU	40	+0.025	40	50	A=P+E+G	50	50	25	34	10	26	30	M8	20	2	M8	9

⚠ For the available sizes, refer to the price list. ⚠ DH7 tolerance is before the slit machining.
⚠ For mating, g6, f8 shaft tolerances are recommended. Tightening with a long wrench is recommended.

Ordering Example
Part Number: KMN10 - P
Example: KMLU20 - 30

D	Unit Price												
	Pitch Selectable						Pitch Configurable						
	Standard			Thin			Standard			Thin			
	KMN	MMN	AMN	SMN	KMNU	MMNU	AMNU	WMNU	SMNU	KML	MML	KMLU	MMLU
8													
10													
12													
15													
16													
20													
25													
30													
35													
40													
50													

Included Screw

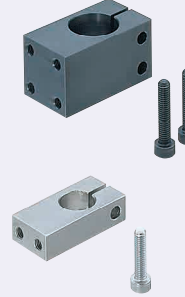
D	Included Screw (Thin Type has 1 screw on each side.)
8	M5-12, 1 pc.
10	M5-15, 1 pc.
12	M5-15, 1 pc.
15	M5-20, 2 pcs.
16	M5-20, 2 pcs.
20	M6-25, 2 pcs.
25	M6-30, 2 pcs.
30	M8-35, 2 pcs.
35	M8-40, 2 pcs.
40	M8-45, 2 pcs.
50	M10-55, 2 pcs.

Strut Clamps

Parallel Taps

Features: Clamp type of mounting a device parallel to post.

Parallel Taps



RoHS10

Type				Material	Surface Treatment	Accessory
Pitch Selectable		Pitch Configurable				
Standard	Thin	Standard	Thin			
KQM	KQMU	KQL	KQLU	Steel for General Structure	Black Oxide	Hex Socket Head Cap Screw
MQM	MQMU	MQL	MQLU	Electroless Nickel Plating	Electroless Nickel Plating	Hex Socket Head Cap Screw (Stainless Steel)
AQM	AQMU	AQL	AQLU	Aluminum Alloy	Black Anodize	Hex Socket Head Cap Screw
WQM	WQMU	-	-	-	Clear Anodize	Hex Socket Head Cap Screw (Stainless Steel)
SQM	SQMU	SQL	SQLU	SUS304	-	-

⚠ CB screws are included with the black oxide and black anodized products, and SCB screws are included with the other products.

6.3 / (6.3 / 1.6)

D=8~12

D=15~50

Standard

Thin

⚠ P Dimension Tolerance: JIS B 0405 Medium Class (P2286)

Pitch Selectable

Part Number		DH7	P	A	B	C	C ₁	E	H	S ₁	M ₁	S	W	M	d				
Type	Type																		
Standard KQM MQM AQM WQM SQM (D≤30)	Thin KQMU MQMU AQMU WQMU SQMU (D≤30)	8	+0.015	15	29	12	12	-	14	8	6	M3	-	2	M5	5.5			
		10	0	16	31	16	16	9	15	9	8	M4	-						
		12	0	18	34	-	-	-	16	10	-	-	-						
		15	+0.018	25	45	22	22	12	20	12	12	M5	12						
		16	0	30	52	28	28	16	22	15	16	M6	14						
		20	+0.021	33	58	32	32	19	25	18	20	-	16						
		25	0	37	66	40	40	29	29	21	25	M8	20						
		30	0	40	72	45	45	22	32	24	28	-	20						
		35	+0.025	45	79	50	50	25	34	26	30	M8	20				2	M8	9
		40	0	60	103	65	65	32	43	33	38	M10	32				3	M10	11

⚠ For the available sizes, refer to the price list. ⚠ D=16 is only applicable to Standard Pitch (except Clear Anodize). ⚠ DH7 tolerance is before the slit machining.
⚠ For mating, g6, f8 shaft tolerances are recommended. Tightening with a long wrench is recommended.

Pitch Configurable

Part Number		DH7	P Selection		A	B	C	C ₁	E	H	S ₁	M ₁	S	W	M	d				
Type	Type																			
Standard KQL MQL AQL SQL (D≤30)	Thin KQLU MQLU SQLU (D≤20)	10	+0.015	20	30	A=P+E	16	16	9	15	9	8	M4	-	2	M5	5.5			
		12	0	25	35		22	22	12	20	12	12	M5	12						
		15	0	30	40		28	28	16	22	15	16	M6	14						
		20	+0.021	32	40		32	32	19	25	18	20	-	16						
		25	0	40	50		40	40	29	29	21	25	M8	20						
		30	+0.025	45	50		45	45	22	32	24	28	-	20						
		35	0	50	60		50	50	25	34	26	30	M8	20				2	M8	9
		40	+0.025	50	70		50	50	25	34	26	30	M8	20				2	M8	9
		50	0	65	65		65	65	32	43	33	38	M10	32				3	M10	11

⚠ For the available sizes, refer to the price list. ⚠ DH7 tolerance is before the slit machining. ⚠ For mating, g6, f8 shaft tolerances are recommended. Tightening with a long wrench is recommended.

Ordering Example
Part Number: MQM12 - P
Example: KQLU25 - 40

D	Unit Price																
	Pitch Selectable								Pitch Configurable								
	Standard				Thin				Standard				Thin				
	KQM	MQM	AQM	WQM	SQM	KQMU	MQMU	AQMU	WQMU	SQMU	KQL	MQL	AQL	SQL	KQLU	MQLU	SQLU
8																	
10																	
12																	
15																	
16																	
20																	
25																	
30																	
35																	
40																	
50																	

Included Screw

D	Included Screw (Thin Type has 1 screw on each side.)
8	M5-12, 1 pc.
10	M5-15, 1 pc.
12	M5-15, 1 pc.
15	M5-20, 2 pcs.
16	M5-20, 2 pcs.
20	M6-25, 2 pcs.
25	M6-30, 2 pcs.
30	M8-35, 2 pcs.
35	M8-40, 2 pcs.
40	M8-45, 2 pcs.
50	M10-55, 2 pcs.