

Flexible Clamps / Holder Pipes

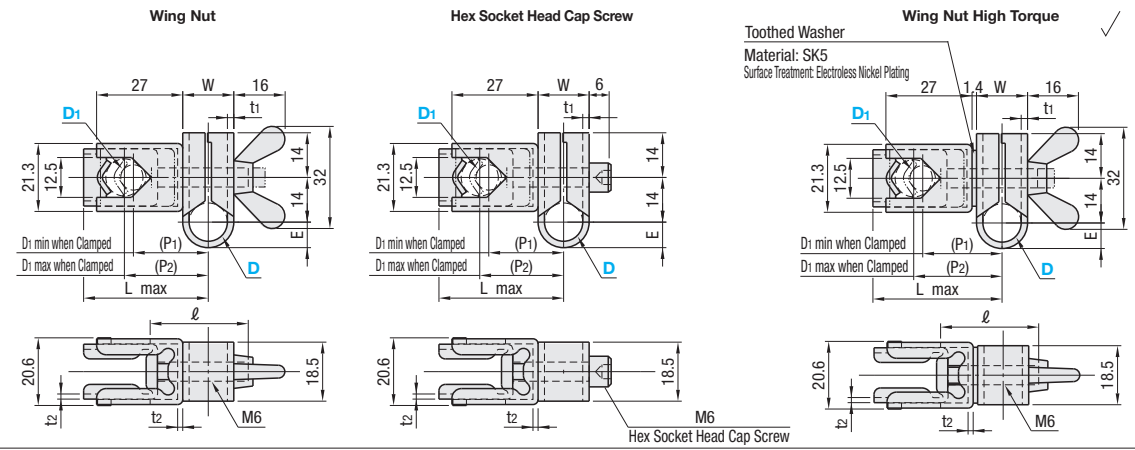
Flexible Clamps Compact

■ **Features:** A circular post and a hex post can be clamped together.

Flexible Clamps



Type	Material	Surface Treatment
Wing Nut FLEC FLEB FLHC	SPHC	Electroless Nickel Plating
FLES FLEBS	SUS304	-



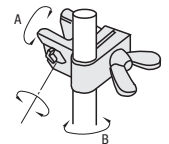
Part Number Type	D1 D	Nominal Clamping Range	W	E	P1(min)	P2(max)	Lmax	l	t1	Unit Price				
										SPHC	SUS304	FLHC		
Wing Nut FLEC FLEB FLHC	12	8	16	8	(23.5)	(26.3)	39.1	30	2	1.6	1.5	FLEC	FLEB	FLHC
Wing Nut High Torque FLES FLEBS	15	8	19	9.5	(25.0)	(27.8)	40.6	35				FLES	FLEBS	FLCS

⚠ Do not tighten the wing nut and the hex socket head cap screw unless the shaft is set in D part. Excessive tightening can cause deformation.
 ⚠ Recommended Diameter Tolerances of Mating Posts: ±0.05 for Wing Nuts; ^{+0.05}/_{-0.1} for Hex Socket Head Cap Screws.

Ordering Example: Part Number - D1
 FLEC12 - 8

Features:

- Two axes can be clamped by tightening one wing nut.
- Flexible clamping is possible as shown in the right figure.



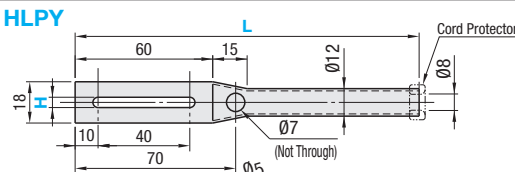
<Reference> Moment Capacity Data

Sample Data	Tightening Conditions	Standard				High Torque	
		SPHC	SUS	SPHC	SPHC		
A (Ncm)	1	102.9	132.3	232.3	313.1		
B (Ncm)	1	205.8	176.4	285.2	285.2		

⚠ The above data is an example of actual measurements and not guaranteed.
 ⚠ A and B correspond with A and B in the above figure.
 ⚠ The data show the results of tightening with Hex Nuts instead of Wing Nuts. The posts are S45C polished material.
 Tightening Condition 1: Tightening Torque 100Ncm
 Tightening Condition 2: Tightening Torque 200Ncm

■ **Features:** Can be used as holders for opto-electric sensors and proximity sensors.

Holder Pipes



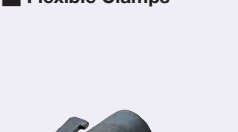
Material: SS400
 Surface Treatment: Electroless Nickel Plating

Part Number Type	H	L		Unit Price	
		L150	L250	L150	L250
HLPY	4.5 5.5	150	250		

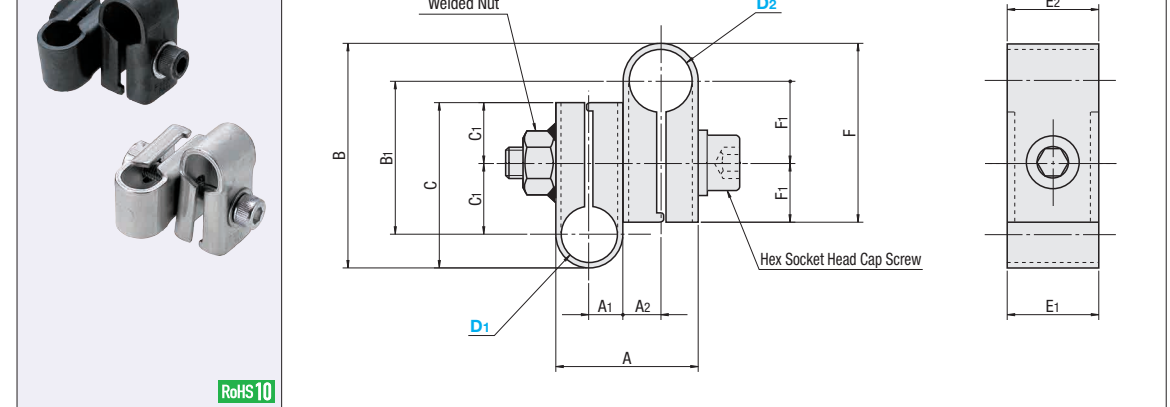
Ordering Example: Part Number - L
 HLPY4.5 - 150

■ **Features:** Easy mounting with one screw. Suitable for mounting light loads.

Flexible Clamps



Type	Material	Surface Treatment
FLYC	SPHC	Black Oxide
FLYM	SPHC	Electroless Nickel Plating
FLYS	SUS304	-



Part Number Type	D1	D2 Selection	A	A1	A2	B	B1	C	C1	E1	E2	F	F1	Welded Nut	Hex Socket Head Cap Screw
	10	12	24.4	5.6	6.6	41.1	28.9	35	14.7	13	15	35	14.2	M6×35	
	12	15	26.4	6.6	6.6	41.6	28.4	35	14.2	15	15	35	14.2	M8	M6×40
	15	20	29.2	6.6	8	42.8	28.2	35	14.2	15	18	36	14		M6×40
	20	25	32	8	8	44	28	36	14	18	18	36	14	M6×45	
	25	30	35	8	9.5	45.3	27.7	36	14	18	18	37	13.7	M6×45	
	30	35	38	9.5	9.5	46.6	27.4	37	13.7	18	18	37	13.7	M6×55	
	35	40	43.6	9.5	12.3	57	35	37	13.7	18	23	55	21.3	M6×55	
	40	45	49.2	12.3	12.3	67.4	42.6	55	21.3	23	23	55	21.3	M8×65	
	45	50	54.2	12.3	14.8	72.6	45.4	55	21.3	23	25	63	24.1	M8×70	
	50	55	59.2	14.8	14.8	77.8	48.2	63	24.1	25	25	63	24.1	M8×75	

⚠ Recommended Diameter Tolerance of Mating Post: +0.1 ~ -0.3.

Ordering Example: Part Number - D2
 FLYC10 - 12

D1	D2	Unit Price		
		FLYC	FLYM	FLYS
8	8			
10	10			
12	12			
15	15			
20	20			
25	25			

Example

