

# Hollow Stands

## Pipe Threaded / Pipe Threaded, Welded

■ **Features:** Can be used with Rotary Connectors on P2191. Select Welded Type for mounting touch panels or boxes.

### ■ Pipe Threaded



### ■ Pipe Threaded, Welded



RoHS 10

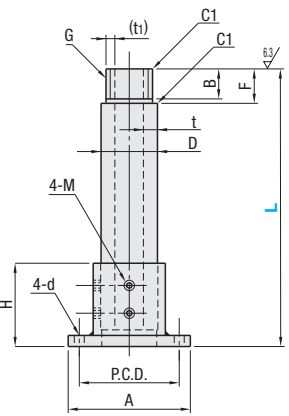
### ■ Pipe Threaded

| Type          |                 | Material         | Surface Treatment          | Portion        |
|---------------|-----------------|------------------|----------------------------|----------------|
| Round Flanged | Compact Flanged |                  |                            |                |
| PSEG          | WPSEG           | STKM13A<br>SS400 | Electroless Nickel Plating | Hollow Bracket |
| PSE GK        | WPSE GK         | STKM13A<br>SS400 | Black Oxide                | Hollow Bracket |
| PSEGS         | -               | SUS304<br>SUS304 | -                          | Hollow Bracket |

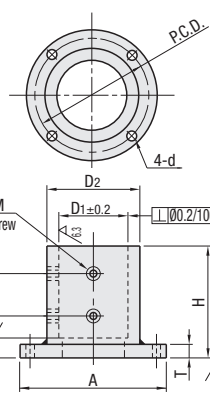
### ■ Pipe Threaded, Welded

| Type          |                 | Material         | Surface Treatment          | Portion        |
|---------------|-----------------|------------------|----------------------------|----------------|
| Round Flanged | Compact Flanged |                  |                            |                |
| PSYG          | WPSYG           | STKM13A<br>SS400 | Electroless Nickel Plating | Hollow Bracket |

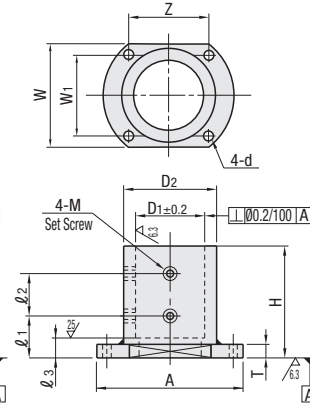
### ■ Pipe Threaded



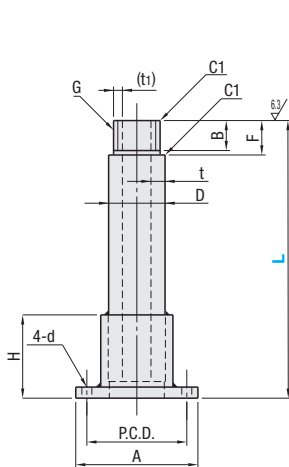
### Round Flanged



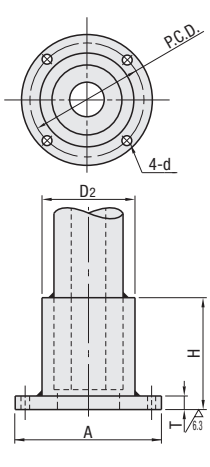
### Compact Flanged



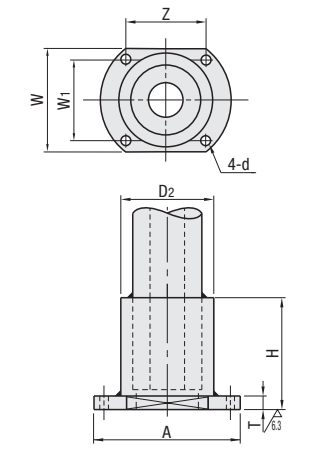
### ■ Pipe Threaded, Welded



### Round Flanged



### Compact Flanged



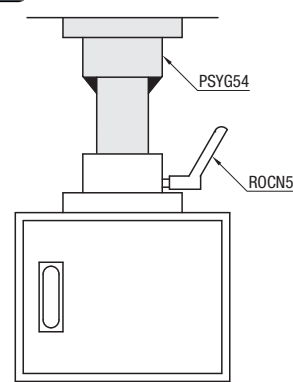
| Part Number | Type                 | G(PF)   |                   |             | L        | Dimensions (mm) |    |       |       |      |       |      |     |        |     |     |   |    |    |     |    |    |    |     |    |     |
|-------------|----------------------|---------|-------------------|-------------|----------|-----------------|----|-------|-------|------|-------|------|-----|--------|-----|-----|---|----|----|-----|----|----|----|-----|----|-----|
|             |                      | Nominal | Nominal of Thread | Thread O.D. |          | F               | B  | D     | D1    | D2   | t     | (t1) | A   | P.C.D. | H   | d   | M | T  | H  | ℓ1  | ℓ2 | ℓ3 | W  | Z   | W1 |     |
| 28          | Round Flanged        | G1      |                   | 33.25       | 200~800  | 26              | 23 | 40    | ±0.4  | 40.5 | 54    | 7    | 3.6 | 100    | 80  | 60  | 9 | M6 | 10 | 60  | 25 | 25 | 15 | 64  | 62 | 44  |
| 36          | Welded Round Flanged | G1 1/4  |                   | 41.91       | 200~1000 | 29              | 26 | 50.8  | ±0.41 | 51.5 | 65    | 8    | 3.5 | 110    | 90  | 75  | 9 | M8 | 12 | 75  | 30 | 30 | 15 | 74  | 74 | 50  |
| 42          | PSE GK               | G1 1/2  |                   | 47.80       | 200~1000 | 30              | 27 | 60.5  | ±0.49 | 61   | 76.3  | 4    | 3.6 | 120    | 100 | 90  | 9 | M8 | 12 | 90  | 35 | 40 | 15 | 90  | 76 | 70  |
| 54          | PSEGS                | G2      |                   | 59.61       | 300~1000 | 35              | 32 | 76.3  | ±0.56 | 77   | 89.1  | 5.5  | 4.9 | 130    | 110 | 105 | 9 | M8 | 12 | 105 | 40 | 45 | 20 | 100 | 80 | 80  |
| 70          | WPSEG                | G2 1/2  |                   | 75.18       | 300~1000 | 40              | 37 | 89.1  | ±0.9  | 90   | 101.6 | 7    | 6.3 | 140    | 120 | 120 | 9 | M8 | 12 | 120 | 40 | 60 | 20 | 110 | 86 | 90  |
| 82          | WPSE GK              | G3      |                   | 87.88       | 300~1000 | 40              | 37 | 101.6 | ±1.02 | 102  | 120   | 6    | 5.3 | 160    | 140 | 150 | 9 | M8 | 12 | 150 | 40 | 90 | 20 | 130 | 94 | 110 |

⚠ Parallel pipe thread is JIS B 0202 Class B. ⚠ For rotary connectors, refer to P2191, 2192  
 ⚠ PSEGS is available for nominal 42 and 54 only. ⚠ Only for PSEGS54, t dimension is 4.9, and (t1) dimension is 4.4.

Ordering Example  
 Part Number - L  
 PSEG42 - 600  
 WPSYG54 - 300

| Nominal Dimension | L            | Unit Price                 |             |        |                            |             |                            |       |
|-------------------|--------------|----------------------------|-------------|--------|----------------------------|-------------|----------------------------|-------|
|                   |              | Pipe Threaded              |             |        | Pipe Threaded, Welded      |             |                            |       |
|                   |              | Electroless Nickel Plating | Black Oxide | SUS304 | Electroless Nickel Plating | Black Oxide | Electroless Nickel Plating |       |
| 28                | Min. L ~ 400 | PSEG                       | PSE GK      | PSEGS  | WPSEG                      | WPSE GK     | PSYG                       | WPSYG |
|                   | L401 ~ 600   |                            |             |        |                            |             |                            |       |
|                   | L601 ~ 800   |                            |             |        |                            |             |                            |       |
| 36                | Min. L ~ 400 |                            |             |        |                            |             |                            |       |
|                   | L401 ~ 600   |                            |             |        |                            |             |                            |       |
|                   | L601 ~ 800   |                            |             |        |                            |             |                            |       |
| 42                | Min. L ~ 400 |                            |             |        |                            |             |                            |       |
|                   | L401 ~ 600   |                            |             |        |                            |             |                            |       |
|                   | L601 ~ 800   |                            |             |        |                            |             |                            |       |
| 54                | Min. L ~ 400 |                            |             |        |                            |             |                            |       |
|                   | L401 ~ 600   |                            |             |        |                            |             |                            |       |
|                   | L601 ~ 800   |                            |             |        |                            |             |                            |       |
| 70                | Min. L ~ 400 |                            |             |        |                            |             |                            |       |
|                   | L401 ~ 600   |                            |             |        |                            |             |                            |       |
|                   | L601 ~ 800   |                            |             |        |                            |             |                            |       |
| 82                | Min. L ~ 400 |                            |             |        |                            |             |                            |       |
|                   | L401 ~ 600   |                            |             |        |                            |             |                            |       |
|                   | L601 ~ 800   |                            |             |        |                            |             |                            |       |
| 92                | Min. L ~ 400 |                            |             |        |                            |             |                            |       |
|                   | L401 ~ 600   |                            |             |        |                            |             |                            |       |
|                   | L601 ~ 800   |                            |             |        |                            |             |                            |       |

### Example



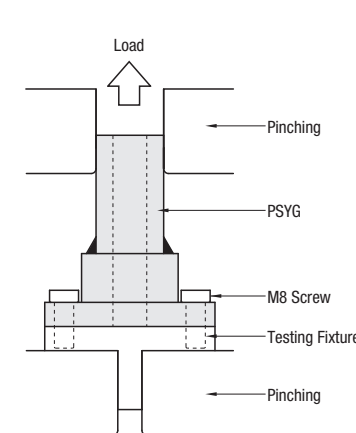
Use "Pipe Threaded, Welded" for mounting this product upside down.

### <Reference Data on Tensile Load>

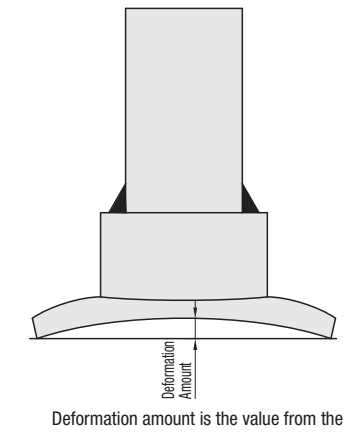
The Result of Fracture Test by the Following Measuring Method (N=3)

| Nominal | Fracture Location | Fracture Load (kN) |         | Deformation Amount (mm) |       |
|---------|-------------------|--------------------|---------|-------------------------|-------|
|         |                   | Max.               | Min.    | Max.                    | Min.  |
| 28      | All at M8 Screws  | 186.016            | 181.891 | 0.907                   | 0.666 |
| 54      | All at M8 Screws  | 176.484            | 172.094 | 0.024                   | 0.011 |

### <Measuring Method of Tensile Load>



### <Deformation Amount>



Deformation amount is the value from the flange sample's center area.