

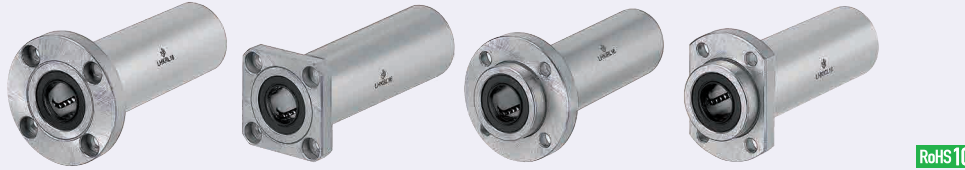
Flanged Linear Bushings

Long / Long, Pilot

= For customers using industry standard products =
 The part enclosed in the red frame is as per industry standard specifications (Outer cylinder SUJ2 equivalent, Retainer resin).
 Consider these specifications while selecting the product.

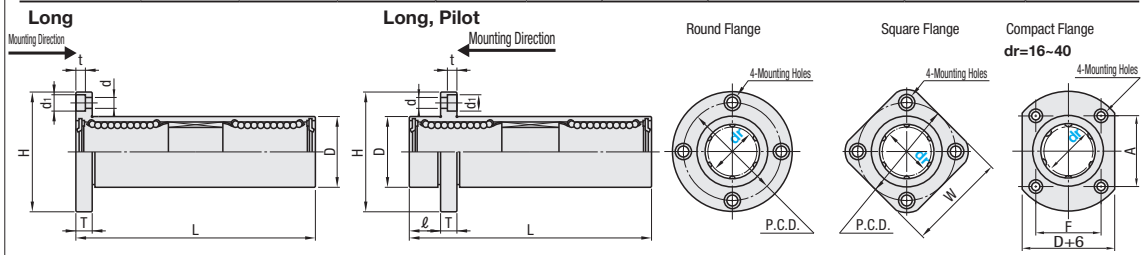
Features: Easy to assemble with bolt-on flanges. The linear bushing does not protrude out on the front side for good space utilization.

Industry Standard



RoHS10

	Type	Material	Hardness	Surface Treatment	Material	Ambient Operating Temp.	Accessory
Long	LHKRNL	SUJ2 Equivalent	58HRC~	-	Plastic (Duracon M90 Equivalent)	-20~ 80°C	Seal Material Nitrile Rubber (-20~120°C)
	LHKRNL				Stainless Steel (SUS)	-20~110°C	
	LHKRNL				Plastic (Duracon M90 Equivalent)	-20~ 80°C	
	LHKRNL				Stainless Steel (SUS)	-20~110°C	
Long, Pilot	LHKRNL	SUJ2 Equivalent	58HRC~	-	Plastic (Duracon M90 Equivalent)	-20~ 80°C	Seal Material Nitrile Rubber (-20~120°C)
	LHKRNL				Stainless Steel (SUS)	-20~110°C	
	LHKRNL				Plastic (Duracon M90 Equivalent)	-20~ 80°C	
	LHKRNL				Stainless Steel (SUS)	-20~110°C	



dr	D Tolerance		L Tolerance	l	H	T	d	t	P.C.D.	W	F	A	Eccentricity	Rows of Balls	* Perpendicularity	Basic Load Rating			Mass (g)	
Tolerance	No Surface Treatment	Surface Treatment														C (Dynamic) N	Co (Static) N	Allowable Static Moment (N·m)		Round Flange
6	0	15	-0.013	49	5	32	5	3.5	6	3.1	24	25	-	-	0.020	324	529	8.2	66	58
8	-0.012	19	0	68	6	43	6	4.5	7.5	4.1	29	30	-	-	0.025	431	784	16.0	135	117
10	0	23	0	82	8	54	8	5.5	9	5.1	33	34	-	-	0.030	588	1100	27.0	205	189
12	0	26	-0.016	86	10	62	10	6.6	11	6.1	36	35	-	-	0.030	657	1200	40.1	248	228
13	0	28	-0.021	92	13	74	13	9	14	8.1	38	37	-	-	0.030	813	1570	42.9	308	286
16	-0.015	32	0	105	13	84	13	9	14	8.1	43	42	24	36	0.025	1230	2350	73.5	412	376
20	0	40	0	120	13	105	13	9	14	8.1	51	50	32	40	0.025	1400	2740	98.0	752	714
25	-0.018	45	-0.019	167	13	120	13	9	14	8.1	60	58	35	49	0.030	1560	3140	157	1244	1163
30	0	52	0	184	13	140	13	9	14	8.1	67	64	38	55	0.030	2490	5490	297	1636	1543
35	0	60	-0.022	200	13	160	13	9	14	8.1	78	75	45	64	0.030	2650	6270	373	2580	2400
40	-0.021	65	-0.030	230	13	180	13	9	14	8.1	83	80	48	68	0.030	3430	8040	553	2950	2798

For Precautions for Use, see P.303. * Perpendicularity of D part to flange mounting surface kgf=Nd0.101972.
 Mounting holes of long type are on the opposite direction. For Piloted and Flanged Type application examples, see P.307.

Part Number	Type	Unit Price Long												
		dr	Round Flange				Square Flange				Compact Flange			
(SUJ2 Equivalent) (SUS440C Equivalent)	LHKRNL	6	-	-	-	-	-	-	-	-	-	-	-	-
(Round Flange)	LHKRNL	8	-	-	-	-	-	-	-	-	-	-	-	-
	LHKRNL	10	-	-	-	-	-	-	-	-	-	-	-	-
	LHKRNL	12	-	-	-	-	-	-	-	-	-	-	-	-
	LHKRNL	13	-	-	-	-	-	-	-	-	-	-	-	-
	LHKRNL	16	-	-	-	-	-	-	-	-	-	-	-	-
(Square Flange)	LHKRNL	20	-	-	-	-	-	-	-	-	-	-	-	-
	LHKRNL	25	-	-	-	-	-	-	-	-	-	-	-	-
	LHKRNL	30	-	-	-	-	-	-	-	-	-	-	-	-
(Compact Flange)	LHKRNL	35	-	-	-	-	-	-	-	-	-	-	-	-
	LHKRNL	40	-	-	-	-	-	-	-	-	-	-	-	-

Part Number	Type	Unit Price Long with Pilot												
		dr	Round Flange				Square Flange				Compact Flange			
(SUJ2 Equivalent) (SUS440C Equivalent)	LHKRNL	6	-	-	-	-	-	-	-	-	-	-	-	-
(Round Flange)	LHKRNL	8	-	-	-	-	-	-	-	-	-	-	-	-
	LHKRNL	10	-	-	-	-	-	-	-	-	-	-	-	-
	LHKRNL	12	-	-	-	-	-	-	-	-	-	-	-	-
	LHKRNL	13	-	-	-	-	-	-	-	-	-	-	-	-
	LHKRNL	16	-	-	-	-	-	-	-	-	-	-	-	-
(Square Flange)	LHKRNL	20	-	-	-	-	-	-	-	-	-	-	-	-
	LHKRNL	25	-	-	-	-	-	-	-	-	-	-	-	-
	LHKRNL	30	-	-	-	-	-	-	-	-	-	-	-	-
(Compact Flange)	LHKRNL	35	-	-	-	-	-	-	-	-	-	-	-	-
	LHKRNL	40	-	-	-	-	-	-	-	-	-	-	-	-

Ordering Example
 Part Number LHKRNL
 LHKRNL (L Type Greased) Alternative grease types available.
 LHKRNL (G Type Greased) For Days to Ship, Price and Performance, see P.304.
 LHKRNL (H Type Greased)

Flanged Linear Bushings

Long / Long, Pilot

= For customers selecting MISUMI original specifications =
 The part enclosed in the red frame is as per standard specifications (Outer cylinder SUJ2 equivalent, Retainer resin).
 Consider these specifications while selecting the product.

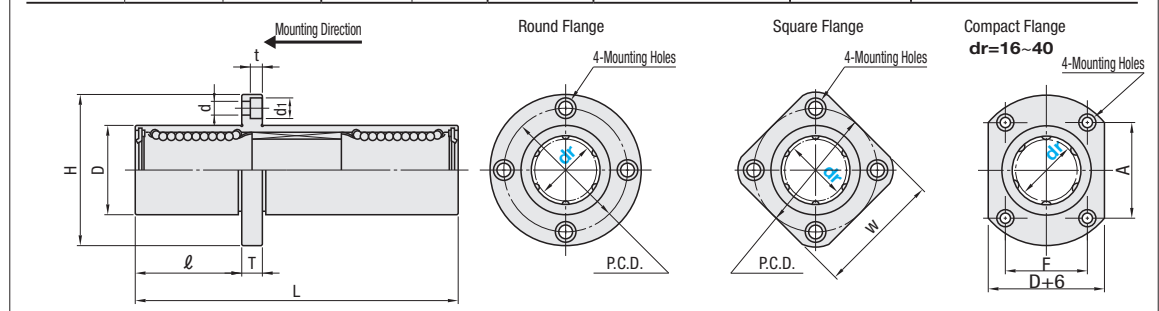
Features: Easy to assemble with bolt-on flanges. A load can be placed near the center of the bushing, evenly distributing the load and space.

MISUMI Original



RoHS10

	Type	Material	Hardness	Surface Treatment	Material	Ambient Operating Temp.	Accessory
Long	LHKMRNL	SUJ2 Equivalent	58HRC~	-	Plastic (Duracon M90 Equivalent)	-20~ 80°C	Seal Material Nitrile Rubber (-20~120°C)
	LHKMRNL				Stainless Steel (SUS)	-20~110°C	
	LHKMRNL				Plastic (Duracon M90 Equivalent)	-20~ 80°C	
	LHKMRNL				Stainless Steel (SUS)	-20~110°C	
Long, Pilot	LHKMRNL	SUJ2 Equivalent	58HRC~	-	Plastic (Duracon M90 Equivalent)	-20~ 80°C	Seal Material Nitrile Rubber (-20~120°C)
	LHKMRNL				Stainless Steel (SUS)	-20~110°C	
	LHKMRNL				Plastic (Duracon M90 Equivalent)	-20~ 80°C	
	LHKMRNL				Stainless Steel (SUS)	-20~110°C	



dr	D Tolerance		L Tolerance	l	H	T	d	t	P.C.D.	W	F	A	Eccentricity	Rows of Balls	* Perpendicularity	Basic Load Rating			Mass (g)	
Tolerance	No Surface Treatment	Surface Treatment														C (Dynamic) N	Co (Static) N	Allowable Static Moment (N·m)		Round Flange
6	0	15	-0.013	49	5	32	5	3.5	6	3.1	24	25	-	-	0.020	324	529	8.2	66	58
8	-0.012	19	0	68	6	43	6	4.5	7.5	4.1	29	30	-	-	0.020	431	784	16.0	135	117
10	0	23	0	82	8	54	8	5.5	9	5.1	33	34	-	-	0.020	588	1100	27.0	205	189
12	0	26	-0.016	86	10	62	10	6.6	11	6.1	36	35	-	-	0.020	657	1200	40.1	248	228
13	0	28	-0.021	92	13	74	13	9	14	8.1	38	37	-	-	0.020	813	1570	42.9	308	286
16	-0.015	32	0	105	13	84	13	9	14	8.1	43	42	24	36	0.025	1230	2350	73.5	412	376
20	0	40	0	120	13	105	13	9	14	8.1	51	50	32	40	0.025	1400	2740	98.0	752	714
25	-0.018	45	-0.019	167	13	120	13	9	14	8.1	60	58	35	49	0.025	1560	3140	157	1244	1163
30	0	52	0	184	13	140	13	9	14	8.1	67	64	38	55	0.030	2490	5490	297	1636	1543
35	0	60	-0.022	200	13	160	13	9	14	8.1	78	75	45	64	0.030	2650	6270	373	2580	2400
40	-0.021	65	-0.030	230	13	180	13	9	14	8.1	83	80	48	68	0.030	3430	8040	553	2950	2798

For Precautions for Use, see P.303. * Perpendicularity of D part to flange mounting surface kgf=Nd0.101972.

Part Number	Type	Unit Price												
		dr	Round Flange				Square Flange				Compact Flange			
(SUJ2 Equivalent) (SUS440C Equivalent)	LHKMRNL	6	-	-	-	-	-	-	-	-	-	-	-	-
(Round Flange)	LHKMRNL	8	-	-	-	-	-	-	-	-	-	-	-	-
	LHKMRNL	10	-	-	-	-	-	-	-	-	-	-	-	-
	LHKMRNL	12	-	-	-	-	-	-	-	-	-	-	-	-
	LHKMRNL	13	-	-	-	-	-	-	-	-	-	-	-	-
	LHKMRNL	16	-	-	-	-	-	-	-	-	-	-	-	-
(Square Flange)	LHKMRNL	20	-	-	-	-	-	-	-	-	-	-	-	-
	LHKMRNL	25	-	-	-	-	-	-	-	-	-	-	-	-
	LHKMRNL	30	-	-	-	-	-	-	-	-	-	-	-	-
(Compact Flange)	LHKMRNL	35	-	-	-	-	-	-	-	-	-	-	-	-
	LHKMRNL	40	-	-	-	-	-	-	-	-	-	-	-	-

Ordering Example
 Part Number LHKMSLF6
 LHKMSLF6 (L Type Greased) Alternative grease types available.
 LHKMSLF6 (G Type Greased) For Days to Ship, Price and Performance, see P.304.
 LHKMSLF6 (H Type Greased)

