



For Single Axis Actuator LX Series selections, please use our 2D and 3D CAD data and Technical Calculation Software (free of charge).  
[http://download.misumi.jp/mo/fa\\_sotf.html](http://download.misumi.jp/mo/fa_sotf.html)

# Single Axis Actuators LX26 Standard / Cover Type

Convenient Sensor Sets are also available. P424

Design / Utility Model Registered

**Specifications**

**LX26**

Standard / Cover

Screw Shaft Dia. (mm) 8

Lead (mm) 2, 5, 10

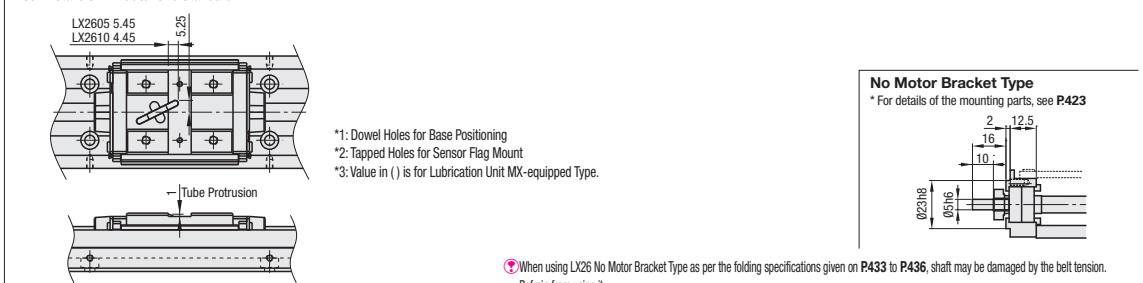
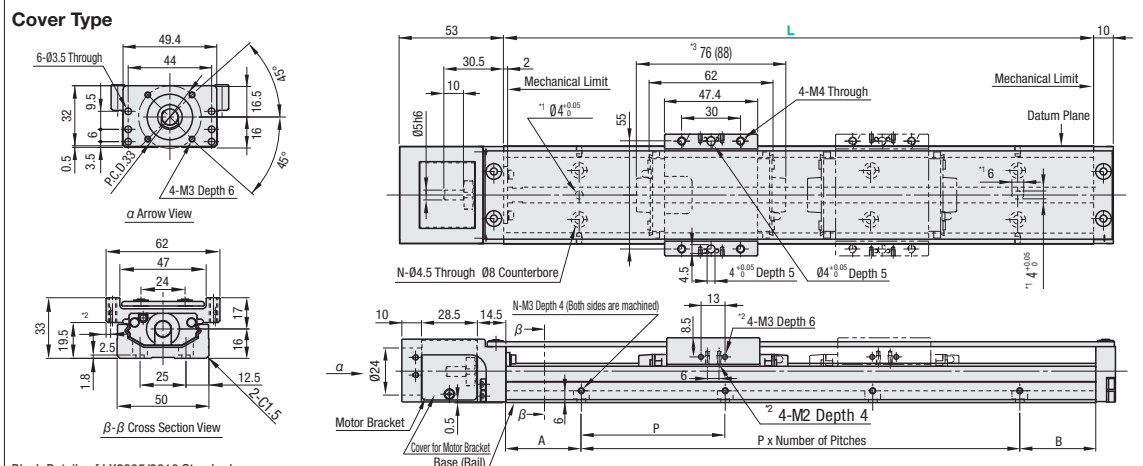
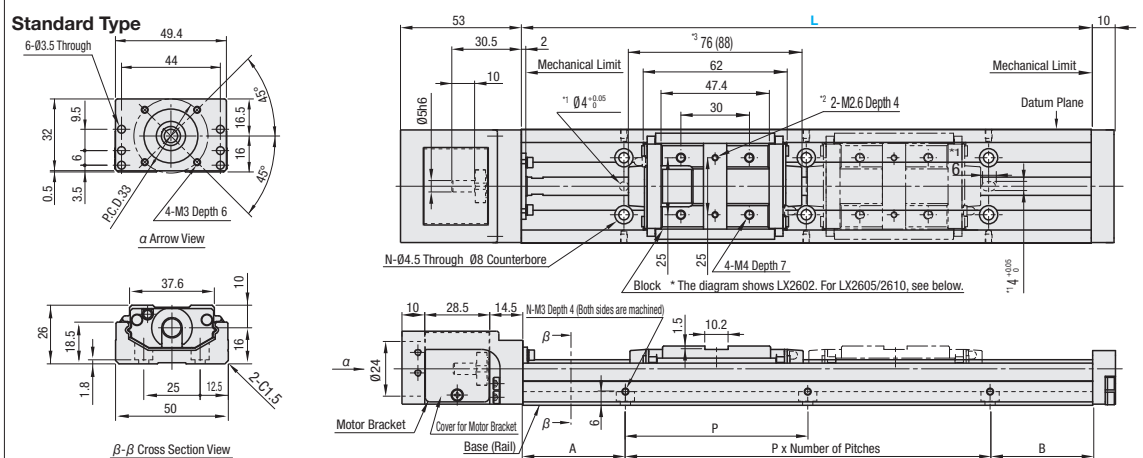
Accuracy High Grade / Precision Grade

**Accessory**

① Motor Adapter Plate  
 A5052 Black Anodize  
 ② Adapter Plate Screw 4 pcs. SUSXM7  
 ③ No accessory is included with No Motor Bracket Type.  
 ④ For Material table, see P411

| Part Number | Standard Grease |                 | Low Dust Generation Grease |                 | Lubrication Unit MX-equipped (Standard Grease) |                 |
|-------------|-----------------|-----------------|----------------------------|-----------------|--|-----------------|
|             | High Grade      | Precision Grade | High Grade                 | Precision Grade | High Grade                                     | Precision Grade |
| Lead 2      | LX2602 (C)      | LX2602 (C) P    | LX2602 (C) G               | LX2602 (C) PG   | LX2602 (C) -MX                                 | LX2602 (C) P-MX |
| Lead 5      | LX2605 (C)      | LX2605 (C) P    | LX2605 (C) G               | LX2605 (C) PG   | LX2605 (C) -MX                                 | LX2605 (C) P-MX |
| Lead 10     | LX2610 (C)      | LX2610 (C) P    | LX2610 (C) G               | LX2610 (C) PG   | LX2610 (C) -MX                                 | LX2610 (C) P-MX |

③ (C) is for Cover Type.      ④ Low Dust Generation Grease Information P414      ⑤ Lubrication Unit MX Information P408



| Part Number   | Block Qty.     | Motor Adapter Plates   | Base Length (L)   | * Effective Stroke |                   |                   | Total Mass (kg)      |                      |                      |                      | Mounting Hole Dimensions |         |          |                                       |    |
|---|----------------|--|-------------------|--------------------|-------------------|-------------------|----------------------|----------------------|----------------------|----------------------|--------------------------|---------|----------|---------------------------------------|----|
|   |                |  |                   | B1                 | B2                | MX-equipped (B)   | Standard             |                      | Cover                |                      | A                        | P       | B        | Number of Pitches/Number of Holes (N) |    |
|   |                |  |                   |                    |                   |                   | B1                   | B2                   | B1                   | B2                   |                          |         |          |                                       |    |
| (Standard Grease)<br>LX2602 (C)<br>LX2605 (C)<br>LX2610 (C)   | (1 pc.)<br>B1  | (Servo Motor)<br>A2625 A2628<br>A2638 A2640<br>E2640   | 100 (Lead 2 only) | 17                 | -                 | -                 | 0.87                 | 1.07                 | -                    | 10                   | -                        | 10      | 1        | 4                                     |    |
| (Low Dust Generation Grease)<br>LX2602 (C) G<br>LX2605 (C) G<br>LX2610 (C) G                          |                | (Low Dust Generation Grease)<br>LX2602 (C) PG<br>LX2605 (C) PG<br>LX2610 (C) PG                          | 150<br>200        | 67<br>117          | -<br>105          | -<br>1.16         | -<br>1.36            | 0.95<br>1.16         | 1.15<br>1.36         | -<br>1.36            | 35<br>20                 | -<br>80 | 35<br>20 | 2<br>6                                | 4  |
| (Lubrication Unit MX-equipped, Standard Grease)<br>LX2602 (C) -MX<br>LX2605 (C) -MX<br>LX2610 (C) -MX | (2 pcs.)<br>B2 | (Stepping Motor)<br>T2628 T2642<br>T2656.4   | 250               | 167                | 91                | 155               | 1.37                 | 1.57                 | 1.57                 | 1.89                 | 45                       | 80      | 45       | 3                                     | 8  |
| (Lubrication Unit MX-equipped, Standard Grease)<br>LX2602 (C) -MX<br>LX2605 (C) -MX<br>LX2610 (C) -MX |                | (Lubrication Unit MX-equipped, Standard Grease)<br>LX2602 (C) P-MX<br>LX2605 (C) P-MX<br>LX2610 (C) P-MX | 300<br>350<br>400 | 217<br>267<br>317  | 141<br>191<br>241 | 205<br>255<br>305 | 1.58<br>1.79<br>2.00 | 1.78<br>1.99<br>2.20 | 1.78<br>1.99<br>2.20 | 2.10<br>2.31<br>2.52 | 30<br>15<br>40           | -       | 15<br>40 | 4<br>10                               | 10 |

\* Precision Certificate is enclosed with precision grade products.  
 \* Motor adapter plate and mounting screws are not included with No Adapter Plate Type.  
 \* Effective stroke is indicated in dimensions with a margin of 2.5mm each from the ends.  
 \* (C) is for Cover Type.  
 ④ For Max. Velocity, see P413  
 ⑤ For Moment of Inertia, see P412  
 ⑥ 0.007kg will be added to MX-equipped types.

**Accuracy Standards**

| Accuracy Standards             | High Grade | Precision Grade |
|--------------------------------|------------|-----------------|
| Positioning (mm)               | 0.06       | 0.02            |
| Backlash (mm)                  | 0.01       | 0.003           |
| Positioning Repeatability (mm) | ±0.005     | ±0.003          |
| Running Parallelism (mm)       | 0.025      | 0.01            |
| Starting Torque (N·cm)         | 2          | 2               |

**Servo Motor Application Table**

| Part Number | Flange Size | Manufacturer  | Wattage        |
|-------------|-------------|---|----------------|
| A2625       | 25          | Yasukawa / Mitsubishi Electric Corporation  | 10W/20W/30W    |
| A2628       | 28          | Mitsubishi Electric Corporation   |                |
| A2638       | 38          | Panasonic   | 50W/100W       |
| E2640       | 40          | SIEMENS   |                |
| A2640       | 40          | Yasukawa Electric Corporation<br>Mitsubishi Electric Corporation<br>Keyence Corporation<br>Omron Corporation<br>Sanyo Denki Co., Ltd. | 50W<br>30W/50W |

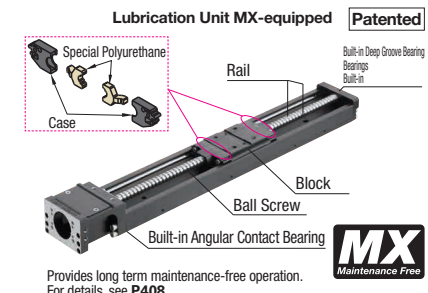
**Stepping Motor Application Table**

| Part Number | Flange Size | Manufacturer            | Type                       |
|-------------|-------------|-------------------------|----------------------------|
| T2628       | 28          | Oriental Motor<br>Motor | 2-phase / 5-phase / α-Step |
| T2642       | 42          |                         |                            |
| T2656.4     | 56.4        | NEMA standards          | -                          |

④ Shaft insertion depth on coupling will be 0.5mm shorter on each side when used with Siemens motor.  
 ⑤ For details on supported motor types and detailed diagram of Motor Adapter Plates, see P423

**Ordering Example**

|             |   |            |   |                      |   |                 |
|-------------|---|------------|---|----------------------|---|-----------------|
| Part Number | - | Block Qty. | - | Motor Adapter Plates | - | Base Length (L) |
| LX2602C     | - | B1         | - | A2640                | - | 300             |
| LX2605-MX   | - | B1         | - | A2638                | - | 200             |



**Unit price for Precision Grade / Low Particle Generation Grease Option / Lubrication Unit MX-equipped**

| Specifications               | Unit Price |
|------------------------------|------------|
| Precision Grade              |            |
| Low Dust Generation Grease   |            |
| Lubrication Unit MX-equipped |            |

④ Listed Price + Unit Price = Product Price  
 ⑤ Volume Discount Rate is applicable.

**High Grade Unit Price**

| Part Number   | L=100 (Lead 2 only) | L=150 | L=200 | L=250 | L=300 | L=350 (Lead 5 and 10 only) | L=400 (Lead 5 and 10 only) | Motor Adapter Plates            | Block Qty. | Screw Shaft Dia. | Lead |
|---------------|---------------------|-------|-------|-------|-------|----------------------------|----------------------------|---------------------------------|------------|------------------|------|
| LX26□□-B1-□   |                     |       |       |       |       |                            |                            | Servo Stepping No Adapter Plate | 1          | 8                | 2    |
| LX26□□-B2-□   |                     |       |       |       |       |                            |                            | No Bracket                      | 2          |                  | 5    |
| LX26□□-B1-F   |                     |       |       |       |       |                            |                            | No Bracket                      | 1          | 8                | 10   |
| LX26□□-B2-F   |                     |       |       |       |       |                            |                            | Servo Stepping No Adapter Plate | 2          |                  | 2    |
| LX26□□-C-B1-□ |                     |       |       |       |       |                            |                            | No Bracket                      | 1          | 8                | 5    |
| LX26□□-C-B2-□ |                     |       |       |       |       |                            |                            | No Bracket                      | 2          |                  | 10   |

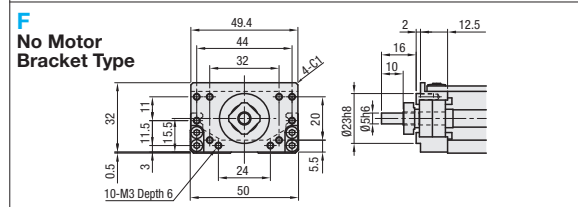
④ Lead 10 is available for selection only in case of B1 (Block 1 pc.)  
 ⑤ LX26□□(C) Series sensor set can be specified as an alteration. For Detailed alteration diagram, see P424



### Motor Adapter Plate Dimensional Drawing

|                           |                             |
|---------------------------|-----------------------------|
| <b>A2625 Servo</b><br>    | <b>A2628 Servo</b><br>      |
| <b>A2638 Servo</b><br>    | <b>A2640 Servo</b><br>      |
| <b>E2640 Servo</b><br>    | <b>T2628 Stepping</b><br>   |
| <b>T2642 Stepping</b><br> | <b>T2656.4 Stepping</b><br> |

Note: Note that the Motor Adapter protrudes beyond the rail at \* marked area.



### Servo Motor Application Table

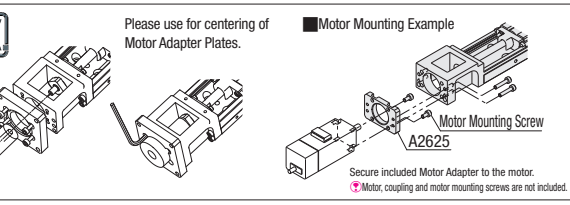
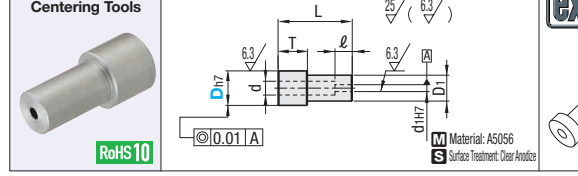
| Part Number         | Flange Size | Manufacturer                    | Product Number                  | Wattage    | Recommended Coupling                                  |
|---------------------|-------------|---------------------------------|---------------------------------|------------|---|
| A2625               | □25         | Yasukawa Electric Corporation   | SGMMJ-A1                        | 10W        | SCXW21 (P.1076)<br>SCPW21 (P.1076)<br>CPDW19 (P.1075) |
|                     |             |                                 | SGMMJ-A2                        | 20W        |   |
|                     |             |                                 | SGMMJ-A3                        | 30W        |   |
| A2628               | □28         | Mitsubishi Electric Corporation | HG-AK0136                       | 10W        |   |
|                     |             |                                 | HG-AK0236                       | 20W        |   |
|                     |             |                                 | HG-AK0336                       | 30W        |   |
| A2638               | □38         | Panasonic                       | MSMD5A                          | 50W        |   |
|                     |             |                                 | MSME5A                          | 50W        |   |
|                     |             |                                 | MSMD01*                         | 100W       |   |
| A2640               | □40         | Yasukawa Electric Corporation   | SGMJV-A5                        | 50W        |   |
|                     |             |                                 | SGMAH-A5                        | 50W        |   |
|                     |             |                                 | SGMAS-A5                        | 50W        |   |
|                     |             |                                 | Mitsubishi Electric Corporation | HG-MR053   | 50W   |
|                     |             |                                 |                                 | HG-KR053   | 50W   |
|                     |             |                                 |                                 | HF-KP053   | 50W   |
|                     |             |                                 | Sanyo Denki Co. Ltd.            | Q1AA04003D | 30W   |
| Q1AA04005D          | 50W         |                                 |                                 |            |   |
| Omron Corporation   | R88M-K05030 | 50W                             |                                 |            |   |
|                     | MV-M05      | 50W                             |                                 |            |   |
| Keyence Corporation | SV-M005     | 50W                             |                                 |            |   |
|                     | 1FK7011-5   | 100W                            |                                 |            |   |
| E2640               | □40         | SIEMENS                         | 1FK7011-5                       | 100W       |   |
|                     |             |                                 | 1FK7015-5                       | 100W       |   |

### Stepping Motor Application Table

| Part Number | Flange Size | Manufacturer   | Product Number    | Type    | Recommended Coupling                                  |                 |
|-------------|-------------|----------------|-------------------|---------|---|-----------------|
| T2628       | □28         | Oriental Motor | CSK22             | 2-phase | SCXW21 (P.1076)<br>SCPW21 (P.1076)<br>CPDW19 (P.1075) |                 |
|             |             |                | CSK52             | 5-phase |   |                 |
|             |             |                | ASC3*             | αStep   |   |                 |
| T2642       | □42         | Oriental Motor | AR2 (ARM)         | αStep   |   |                 |
|             |             |                | PK24*             | 2-phase |   |                 |
|             |             |                | CSK24             | 2-phase |   |                 |
| T2656.4     | □56.4       | NEMA standards | RK54              | 5-phase |   |                 |
|             |             |                | RK554* / PK54*    | 5-phase |   |                 |
| T2656.4     | □56.4       | NEMA standards | AS46, ASC46, AR46 | αStep   |   | CPDW19 (P.1075) |

\* Shaft insertion depth on coupling will be 0.5mm shorter on each side when used with Siemens motor.  
 \* Product numbers and specifications of motors are subject to change. Please check the manufacturers' information.  
 \* Applicable motors and couplings are not limited to the above listed products. Please confirm each mounting dimension.

Ⓜ NEMA standards is a set of standards stipulated by National Electrical Manufacturers Association of United States.  
 Ⓜ Not compatible with geared motors made by Oriental Motor.



| Part Number | D  | Applicable Adapter Plate | d | D1 | d1 | L    | T  | l  | Unit Price 1 - 5 pc(s). |
|-------------|----|--------------------------|---|----|----|------|----|----|-------------------------|
| JIGLX26     | 20 | A2628                    | 8 | 15 | 5  | 47.5 | 17 | 12 |                         |
|             | 30 | A2638/A2640/T2656.4      | 8 | 15 | 5  | 49.5 | 13 | 11 |                         |

Ordering Example: Part Number - D  
 JIGLX26 - 20

For orders larger than indicated quantity, please check with WOS.

### Proximity Sensor (SUNX) - Set Part Specification

| LX Part Number | Code | Sensor Type/Qty. | Sensor Rail  |                               | Sensor (* Qty per Sensor Included) |                            |                       | Sensor Flag            |                     | Unit Price (L≤200)                     |       |        | Unit Price (L≥250) |       |        |        |
|----------------|------|------------------|--------------|-------------------------------|------------------------------------|----------------------------|-----------------------|------------------------|---------------------|--|-------|--------|--------------------|-------|--------|--------|
|                |      |                  | Rail (1 pc.) | Mounting Screw (Pitch +1 pc.) | Sensor Bracket                     | Bracket Mounting Screw Nut | Sensor Mounting Screw | Sensor Mounting Washer | Sensor Flag (1 pc.) | Sensor Flag Mounting Screw             | 1 pc. | 2 pcs. | 3 pcs.             | 1 pc. | 2 pcs. | 3 pcs. |
| LX26□□         | XA   | □ pc(s).         | -            | -                             | -                                  | -                          | -                     | -                      | -                   | -                                      | -     | -      | -                  | -     | -      | -      |
| LX26□□C        | XB   | □ pc(s).         | -            | -                             | -                                  | -                          | -                     | -                      | -                   | -                                      | -     | -      | -                  | -     | -      | -      |
| LX26□□         | FA   | □ pc(s).         | -            | -                             | -                                  | -                          | -                     | -                      | -                   | -                                      | -     | -      | -                  | -     | -      | -      |
| LX26□□         | FB   | □ pc(s).         | -            | -                             | -                                  | -                          | -                     | -                      | -                   | -                                      | -     | -      | -                  | -     | -      | -      |
| LX26□□         | XW1  | 1 pc.            | 1 pc.        | 2 pcs.                        | SENAT3□H                           | SCB3-6                     | CBSST3-10             | LBNR3                  | Dedicated           | Flat Head Machine Screw M2.6-4 (1 pc.) | -     | -      | -                  | -     | -      | -      |
| LX26□□C        | XW2  | 2 pcs.           | 1 pc.        | 2 pcs.                        | SENAT3□H                           | SCB3-6                     | CBSST3-10             | LBNR3                  | Dedicated           | Flat Head Machine Screw M2.6-4 (1 pc.) | -     | -      | -                  | -     | -      | -      |
| LX26□□C        | FW1  | 1 pc.            | 1 pc.        | 2 pcs.                        | SENAT3□H                           | SCB3-6                     | CBSST3-10             | LBNR3                  | Dedicated           | Flat Head Machine Screw M2.6-4 (1 pc.) | -     | -      | -                  | -     | -      | -      |
| LX26□□C        | FW2  | 2 pcs.           | 2 pcs.       | 1 pc.                         | SENAT3□H                           | SCB3-6                     | CBSST3-10             | LBNR3                  | Dedicated           | Flat Head Machine Screw M2.6-4 (1 pc.) | -     | -      | -                  | -     | -      | -      |

### Photo Sensor (SUNX) - Set Part Specification

| LX Part Number | Code | Photo Sensor | Sensor Rail  |                               | Sensor (* Qty per Sensor Included) |                                   |                       | Sensor Flag                   |                     | Unit Price (L≤200)                     |       |        | Unit Price (L≥250) |       |        |        |
|----------------|------|--------------|--------------|-------------------------------|------------------------------------|-----------------------------------|-----------------------|-------------------------------|---------------------|--|-------|--------|--------------------|-------|--------|--------|
|                |      |              | Rail (1 pc.) | Mounting Screw (Pitch +1 pc.) | Sensor Bracket                     | Bracket Mounting Screw Nut        | Sensor Mounting Screw | Sensor Mounting Washer        | Sensor Flag (1 pc.) | Sensor Flag Mounting Screw             | 1 pc. | 2 pcs. | 3 pcs.             | 1 pc. | 2 pcs. | 3 pcs. |
| LX26□□         | SP   | PM-L25       | SENAT3□H     | SCB3-6                        | Dedicated                          | SCB3-5 (2 pcs.)<br>LBNR3 (2 pcs.) | SCB3-6 (2 pcs.)       | M2 Small Flat Washer (2 pcs.) | Dedicated           | Flat Head Machine Screw M2.6-4 (1 pc.) | -     | -      | -                  | -     | -      | -      |
| LX26□□C        | MP   | PM-L25       | SENAT3□H     | SCB3-6                        | Dedicated                          | SCB3-5 (2 pcs.)<br>LBNR3 (2 pcs.) | SCB3-6 (2 pcs.)       | M2 Small Flat Washer (2 pcs.) | Dedicated           | SCB3-5 (2 pcs.)                        | -     | -      | -                  | -     | -      | -      |

The Photo Sensor PM-L24 is to be discontinued and replaced by the next-generation product PM-L25 in April 2017.

### Photo Sensor (Omron) - Set Part Specification

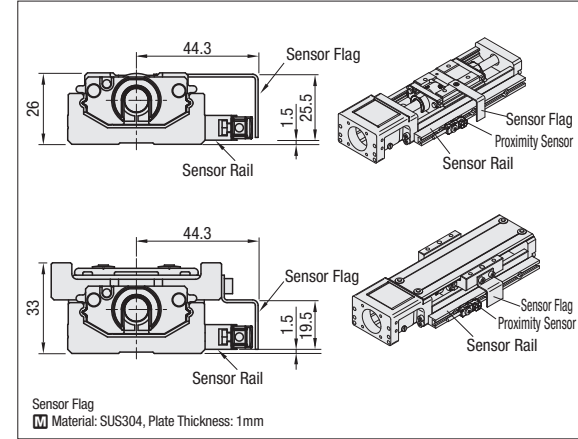
| LX Part Number | Code | Photo Sensor | Sensor Rail  |                               | Sensor (* Qty per Sensor Included) |                                   |                       | Sensor Flag                |                     | Unit Price (L≤200)                     |       |        | Unit Price (L≥250) |       |        |        |
|----------------|------|--------------|--------------|-------------------------------|------------------------------------|-----------------------------------|-----------------------|----------------------------|---------------------|--|-------|--------|--------------------|-------|--------|--------|
|                |      |              | Rail (1 pc.) | Mounting Screw (Pitch +1 pc.) | Sensor Bracket                     | Bracket Mounting Screw Nut        | Sensor Mounting Screw | Sensor Mounting Washer     | Sensor Flag (1 pc.) | Sensor Flag Mounting Screw             | 1 pc. | 2 pcs. | 3 pcs.             | 1 pc. | 2 pcs. | 3 pcs. |
| LX26□□         | OP   | EE-SX911-R1M | SENAT3□H     | SCB3-6                        | Dedicated                          | SCB3-5 (2 pcs.)<br>LBNR3 (2 pcs.) | SCB3-6 (2 pcs.)       | Small Flat Washer (2 pcs.) | Dedicated           | Flat Head Machine Screw M2.6-4 (1 pc.) | -     | -      | -                  | -     | -      | -      |
| LX26□□C        | EP   | EE-SX911-R1M | SENAT3□H     | SCB3-6                        | Dedicated                          | SCB3-5 (2 pcs.)<br>LBNR3 (2 pcs.) | SCB3-6 (2 pcs.)       | Small Flat Washer (2 pcs.) | Dedicated           | SCB3-6 (2 pcs.)                        | -     | -      | -                  | -     | -      | -      |

\* Sensors are not sold separately.  
 \* EE-SX911-R1M is scheduled to change to EE-SX951-R1M from April 2015.

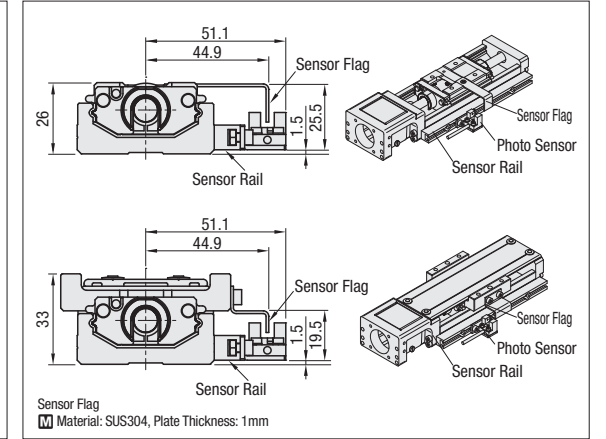
Alterations

|             |   |            |   |                      |   |                 |   |        |
|-------------|---|------------|---|----------------------|---|-----------------|---|--------|
| Part Number | - | Block Qty. | - | Motor Adapter Plates | - | Base Length (L) | - | (Code) |
| LX2602      | - | B1         | - | A2628                | - | 300             | - | XW1    |
| LX2605C     | - | B1         | - | A2638                | - | 200             | - | MP2    |

### Proximity Sensor Type Installation Drawings - SUNX



### Photo Sensor Type Installation Drawings - SUNX / Omron



**Cautions**  
 • Sensor set is shipped with LX Actuator. Assembly required.  
 • Please check for all included parts immediately after unpacking. Some small parts can be lost.  
 Please handle the products with great care.

Please access each sensor manufacturer's website for the specifications of sensors in use.  
 The sensor can also be installed on the opposite side.  
 The drawing shows an example of sensor orientation. The sensor can also be installed in the opposite direction (i.e. with the cable wiring on the right).