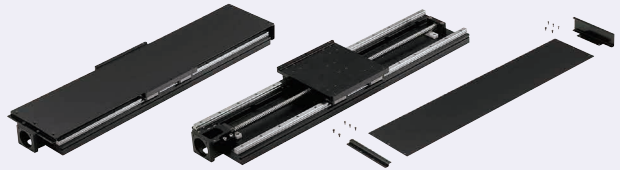


Single Axis Units

Rolled Ball Screws / Precision Ball Screws - Cover Type

Features: Various Sensor Sets (listed on P515.) are available! Single Axis Units driven by Rolled Ball Screws and Precision Ball Screw. Suitable for heavy load transfer.



Note 1) Access hole is provided when L=340 (except L1=100).
 Note 2) Stroke limit is the stroke at the point of contact with the stopper.
 Note 3) Do not hang the unit inverted. The cover will sag.
 Note 4) Some motor brackets have D dimensions smaller than D1. When selecting couplings, refer to "Coupling Application Examples Parts Numbers" below.

Accessory	Material	Surface Treatment	Quantity	Note
Bracket①	Steel	Electrostatic Paint (Black)	1	-
Bracket②	Steel	Electrostatic Paint (Black)	1	-
Cover③	Aluminum Alloy	Anodize (Black)	1	-
Hex Socket Head Cap Screw M4x3	Steel	Treatment Chromate (Black)	6	Cover Mounting Screw
Hex Socket Head Cap Screw M6x10	Steel	Treatment Chromate (Black)	4	Bracket Mounting Screw



Rolled Ball Screws

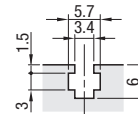
KUAC (Servo Motor Type)
KUBC (Stepping Motor Type)

Precision Ball Screw

KUHC (Servo Motor Type)
KUTC (Stepping Motor Type)

KUAC/KUHC Motor Installation Interface

For KUHC/KUTC Motor installation interface drawing and dimensions, see the diagram below.

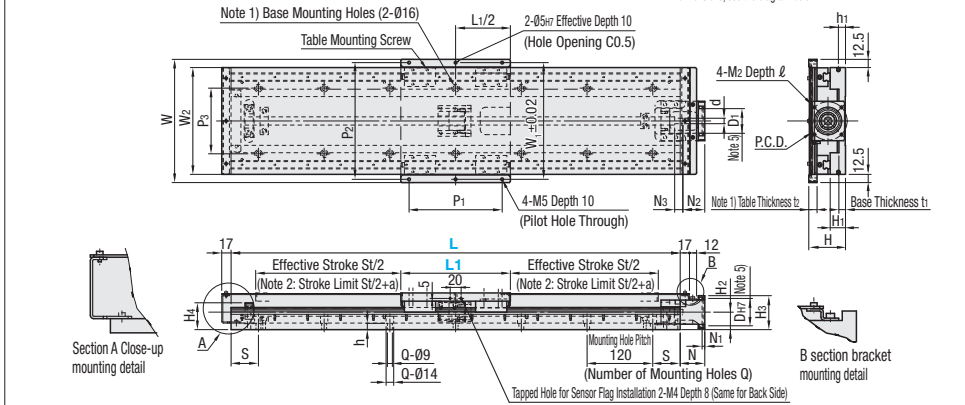


Please use M3 nuts for sensor mounting.

Type	No.	a
KUAC	1204(L)	5
	1210(L)	3.5
	1210	5
	1505	5
	1510	5
	1510L	5
KUBC	1510L	5
	2005L	3.5
	2010L	5
	2010	3.5
	2020L	3.5
	2020	3.5

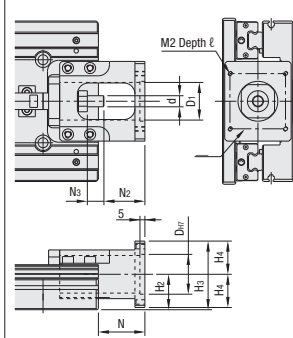
For KUAC and KUBC, a=5.

Base Length	Effective Stroke
L	St
1204	130
340	130
400	190
460	250
520	310
580	370
640	430
700	490
760	550
820	610

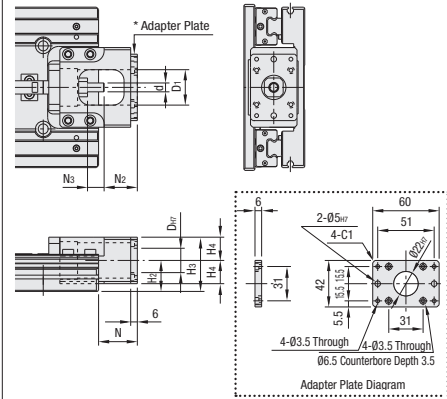


Parts	Base	Table	Motor Bracket	Nut Bracket	Fixed Side Support Unit	Support Side Bearing with Housing	Stopper
Material	Aluminum Alloy	Aluminum Alloy	Aluminum Alloy	Aluminum Alloy	Steel	Aluminum Alloy	Plastic
Surface Treatment	Black Anodize	Black Anodize	Black Anodize	Black Anodize	Black Oxide	Black Anodize	-

KUHC/KUTC Motor Installation Interface / NEMA Motor Installation Interface (KUAC/KUBC/KUHC/KUTC)



KUHC/KUTC15 (L)
KUBC/KUTC20 (L)

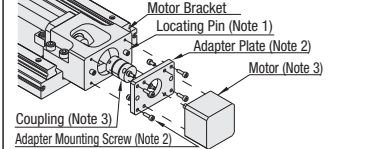


KUAC/KUBC12 (L)

Please see Motor Adapter Plate installation diagram.

Mounting Instruction

For KUHC/KUTC12 (L) Flange: 42 Only



Note 1) Locating pins are press-fit into the motor bracket.
 Note 2) A motor adapter plate and 4 pcs. of mounting screws M3x10 are included.
 Note 3) Motor and coupling are not included.

For Cover Mounting Procedure, see P510

Part Number	Motor Installation Interface (KUB/KUT)											
Type	No.	D	D1	H2	H3	H4	N	N2	N3	d	M2	ℓ
Stepping Motor Type	12 (L)	31	22	33.5	49	21	35	30	8	10	M4	8
	15 (L)	31	22	33.5	49	21	35	30	8	10	M4	8
	2005L	50	36	35.5	62	43	38	15	10	M4	8	
	2010L	50	36	35.5	70	30	58	40	18	12	M4	8
KUBC	2020L	64	44	40	70	30	58	40	18	12	M4	8
	2020	70	50	40	70	30	58	40	18	12	M4	8

For KUHC/KUTC12 (L) flanged surface (H3 dimensions) protrudes downward from the base bottom surface by 2mm.

NEMA Motor Installation Interface

Type	Part Number	No.	D	D1	H2	H3	H4	N	N2	N3	d	M2	ℓ				
NEMA23	KUAC/KUBC KUHC/KUTC	12 (L)	47.1	38.1	35.5	28	58	30	42	37	15	8	M4	8			
		15 (L)				32	62		43	38		10					
		2005L				34	64		40	70		55			37	20	12
		2020L				34	64		40	70		55			37	20	12
		2010L				40	70		55	37		20			12	M4	8
NEMA34	KUAC/KUBC KUHC/KUTC	15 (L)	69.6	73.03	45	32	75	43	56	51	15	10	M5	14			
		2005L				34	77		68	50		20			12	M5	15
		2010L				40	83		68	50		20			12	M5	15
		2020L				34	77		68	50		20			12	M5	15
		2020L				40	83		68	50		20			12	M5	15

* When H2-H4 < 0, Motor Bracket protrudes from Base Fixing Surface.
 * When MCSLC40 is to be applied to NEMA34 series, select Torque 9.0N·m (=1270oz-in) or less.

Part Number	Selection	Ball Screw			W	W1	H	H1	H2	Table			Coupling Application Examples			
		Type	Diameter	Lead						W	t2	W1	P1, P2	KUAC/KUHC	KUBC/KUTC	
Rolled Ball Screw KUAC KUBC	1204	Rolled	12	4	170	159	65	21	28	170	159	100	70	158	CPDW25	CPDW19
	1205	Precision	12	5											MCSLC25	MCSLC20
	1210	Precision / Rolled	15	10											CPDW40	CPDW32
	1505	Precision / Rolled	15	5											MCSLC40	MCSLC32
	1510	Precision / Rolled	15	10											CPDW25	CPDW19
	1520	Precision / Rolled	15	20											MCSLC25	MCSLC20
Precision Ball Screw KUHC KUTC	1204L	Rolled	12	4	220	209	74	28	32	220	209	150	120	208	CPDW25	CPDW19
	1205L	Precision	12	5											MCSLC25	MCSLC20
	1210L	Precision / Rolled	15	10											CPDW40	CPDW32
	1505L	Precision / Rolled	15	5											MCSLC40	MCSLC32
	1510L	Precision / Rolled	15	10											CPDW25	CPDW19
	1520L	Precision / Rolled	15	20											MCSLC25	MCSLC20
	2005L	Precision / Rolled	15	5											CPDW40	CPDW32
	2010L	Precision / Rolled	15	10											MCSLC40	MCSLC32
	2020L	Precision / Rolled	15	20											CPDW25	CPDW19
	2020L	Precision / Rolled	15	20											MCSLC25	MCSLC20
	2020L	Precision / Rolled	20	10											CPDW40	CPDW32
	2020L	Precision / Rolled	20	20											MCSLC40	MCSLC32

Cautions are required when CPDW is used for 400W Servo Motors. Motor peak torque may exceed coupling allowable torque.

Part Number	Type	Base			Base Mounting Hole		* Motor Installation Interface (KUAC/KUHC)															
		No.	W2	H4	t1	h1	P3	h	Q	S	P.C.D.	D	D1	H3	N	N1	N2	N3	d	M2	ℓ	
Rolled Ball Screw KUAC KUBC	1204	145	42	10	13	9.5	75	340	6	6	340	50	50	46	30	34	49	37	32	8	M4	8
	1205	49	12	20	11.5	11.5	400	6	8	400	80	20	70	50	45	62	45	40	10	M5	10	
	1210	42	10	13	9.5	9.5	460	8	8	460	50	50	46	30	34	49	37	32	8	M4	8	
	1505	49	12	20	11.5	11.5	520	8	10	520	80	20	70	50	45	62	45	40	10	M5	10	
	1510	49	12	20	11.5	11.5	580	10	10	580	50	50	70	50	45	62	45	40	10	M5	10	
	1520	55	12	20	11.5	11.5	640	10	12	640	80	20	70	50	45	64	45	39.5	20	12	M5	10
Precision Ball Screw KUHC KUTC	1204L	195	42	10	13	9.5	75	440	6	6	440	50	50	46	30	34	49	37	32	8	M4	8
	1205L	49	12	20	11.5	11.5	460	8	8	460	80	20	70	50	45	62	45	40	10	M5	10	
	1210L	42	10	13	9.5	9.5	520	8	10	520	80	20	70	50	45	64	45	39.5	20	12	M5	10
	1505L	49	12	20	11.5	11.5	580	10	10	580	50	50	70	50	45	64	45	39.5	20	12	M5	10
	1510L	55	12	20	11.5	11.5	640	10	12	640	80	20	70	50	45	64	45	39.5	20	12	M5	10
	1520L	61	12	29	11.5	11.5	760	12	14	760	80	20	70	50	45	64	45	39.5	20	12	M5	10

Ordering Part Number - L - L1
 Example KUHC1205 - 340 - 150

Part Number	Type	No.	L=340	L=400	L=460	L=520	L=580	L=640	L=700	L=760	L=820
1204	Rolled Ball Screw KUAC KUBC	1204	-	-	-	-	-	-	-	-	-
1210		1210	-	-	-	-	-	-	-	-	-
1505		1505	-	-	-	-	-	-	-	-	-
1510		1510	-	-	-	-	-	-	-	-	-
1520		1520	-	-	-	-	-	-	-	-	-
1204L		1204L	-	-	-	-	-	-	-	-	-
1210L		1210L	-	-	-	-	-	-	-	-	-
1505L		1505L	-	-	-	-	-	-	-	-	-
1510L		1510L	-	-	-	-	-	-	-	-	-
1520L		1520L	-	-	-	-	-	-	-	-	-
2005L		2005L	-	-	-	-	-	-	-	-	-
2010L		2010L	-	-	-	-	-	-	-	-	-
2020L	2020L	-	-	-	-	-	-	-	-	-	

Part Number	Type	No.	L=340	L=400	L=460	L=520	L=580	L=640	L=700	L=760	L=820
1205	Precision Ball Screw KUHC KUTC	1205	-	-	-	-	-	-	-	-	-
1210		1210	-	-	-	-	-	-	-	-	-
1505		1505	-	-	-	-	-	-	-	-	-
1510		1510	-	-	-	-	-	-	-	-	-
1520		1520	-	-	-	-	-	-	-	-	-
1204L		1204L	-	-	-	-	-	-	-	-	-
1210L		1210L	-	-	-	-	-	-	-	-	-
1505L		1505L	-	-	-	-	-	-	-	-	-
1510L		1510L	-	-	-	-	-	-	-	-	-
1520L		1520L	-	-	-	-	-	-	-	-	-
2005L		2005L	-	-	-	-	-	-	-	-	-
2010L		2010L	-	-	-	-	-	-	-	-	-
2020L	2020L	-	-	-	-	-	-	-	-	-	

For orders larger than indicated quantity, please request a quotation.

Servo Motor Application Table

Part Number	Manufacturer	Part Number	Output (W)	Flange
KUAC/KUHC 12 (L)	Yasukawa Electric Corporation	SGMAH-A3	30	40
		SGMAH-A5	50	
		SGMAH-01	100	
	Mitsubishi Electric Corporation	HC-MFS053	50	
		HF-MP053	50	
		HC-MFS13	100	
	Sanyo Denki Co., Ltd.	R2AA04003F	30	
		R2AA04005F	50	
		R2		