

Miniature Linear Guides - Wide Rails

Long Blocks with Dowel Holes, Light Preload

= For customers selecting MISUMI original specifications =
frame-surrounded products are compliant with the standard specifications
(Stainless Steel, Light Preload, High Grade Type). Select the block from this spec.

■ Features: MISUMI original specifications with dowel holes. Requires less time for assembly and has better repeatability.

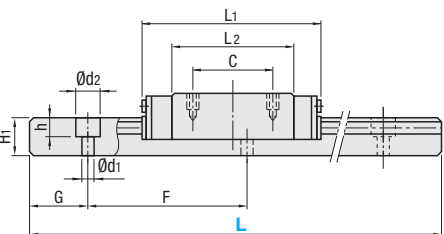
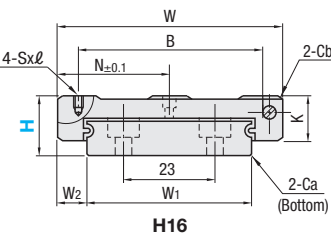
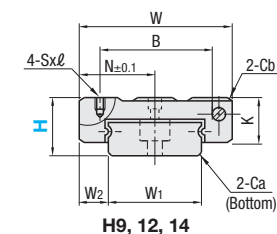
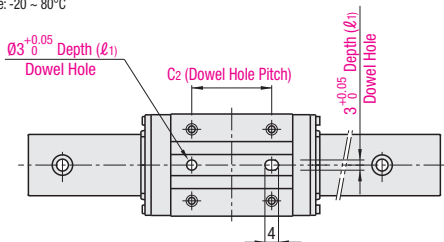
MISUMI Original



Material Hardness	Type Light Preload High Grade	L Dimension	Number of Blocks
Standard Materials	Stainless Steel 56HRC~	SSELBWN	Selectable
		SSEL2BWN	2
		SSELBWNL	1
		SSEL2BWNL	2
Carbon Steel 58HRC~		SELBWN	Selectable
		SEL2BWN	2
		SELBWNL	1
		SEL2BWNL	2

Heat Resistant Temperature: -20 ~ 80°C

⚠ Blocks and rails are not sold as separate items. This Type has guaranteed radial clearances and accuracies as sets of blocks and rails.



⚠ For L Configurable, G dimensions differ from those shown in the table below. For details, see P.531.

Precautions for Use

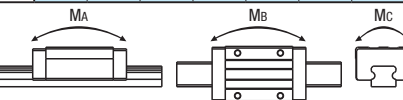
- ⚠ Blocks are equipped with retainers (wire) to prevent balls from falling off.
- ⚠ For how to handle the blocks, see P.525.
- ⚠ Radial clearances and accuracies are not guaranteed if the blocks and rails are interchanged from the original set combinations.
- ⚠ Straight grooves are provided on datum planes.
- ⚠ Be sure to match the datum lines when using.
- ⚠ Rails cannot be connected end to end.
- ⚠ The accuracy of Linear Guides is guaranteed after mounting the rail (after fastening screws on).

the rail and pushing it onto the datum plane).

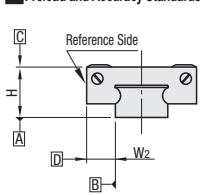
- Minor bending of the rail will be adjusted after being mounted and will not affect the performance.
- ⚠ Others
 - Filled with Lithium soap based grease (Mullemp Grease PS2 by Kyodo Yushi Co., Ltd.).
 - For operating life calculation, see P.527.
 - For operating life calculations, use our free calculation software from http://download.misumi.jp/mol/fa_soft.html.

Part Number		L	Block Dimension								Dowel Hole Dimensions			Guide Rail Dimension							
Type	H		W	L ₁	B	C	Sxℓ	L ₂	K	Cb	N	C ₂	(ℓ ₁)	W ₁	W ₂	H ₁	Ca	Counterbored Hole d ₁ x ₂ x _h	F	G	
🌀Dimensions in () are for 2-Block Type.		9	80~290 (110)	25	43.5	19	19	M3x3	32.5	7	0.3	12.5	19	2.5	14	5.5	5.2	0.5	3.5x6x3.2	30	10
Stainless Steel Standard Specifications	Carbon Steel	12	80~290 (110)	30	51.6	23	24	M3x3	40.6	9	0.3	15	24	2.5	18	6	7.5	0.5	3.5x6x4.5	30	10
		14	110~470 (150)	40	61.6	28	28	M3x3.5	47.4	11	0.5	20	28	3.5	24	8	8	0.5	4.5x8x4.5	40	15
		16	110~670 (190)	60	74.9	45	35	M4x4.5	59.9	13	0.5	30	35	4	42	9	9.5	0.5	4.5x8x4.5	40	15

H	Basic Load Rating		Allowable Static Moment		Mass	
	C (Dynamic) kN	Co (Static) kN	MA N-m	MB N-m	MC N-m	Block kg
9	1.7	4.0	12.1	12.1	28.8	0.035
12	2.6	5.3	20.2	20.2	49.5	0.06
14	3.9	8.5	38.6	38.6	104.6	0.12
16	7.2	14.3	86.0	86.0	305.2	0.23



Preload and Accuracy Standards



Specifications		Unit: µm
Radial Clearance		-3~0
Height H Tolerance		±20
Pair Variation of Height H		15
Width W2 Tolerance		±25
Pair Variation of Width W2		20
Running Parallelism of Plane C against Plane A		See P.525
Running Parallelism of Plane D against Plane A		

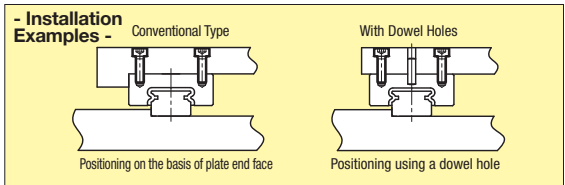
H	L	Unit Price			
		Stainless Steel		Carbon Steel	
9	80	SSELBWN	SSEL2BWN	SELBWN	SEL2BWN
	110				
	140				
	170				
	200				
	230				
	260				
	290				
	320				
	350				
12	80				
	110				
	140				
	170				
	200				
	230				
	260				
	290				
	320				
	350				
14	110				
	150				
	190				
	230				
	270				
	310				
	350				
	390				
	430				
	470				
16	110				
	150				
	190				
	230				
	270				
	310				
	350				
	390				
	430				
	470				

L Dimension Configurable Type (1mm Increment)

H	Unit Price			
	Stainless Steel		Carbon Steel	
9	SSELBWNL	SSEL2BWNL	SELBWNL	SEL2BWNL
12				
14				
16				

⚠ For calculation of L Dimension Configurable Type (1mm Increment), add the above amount to the unit price of the Selectable Type longer than, and closest to this L Dimension Configurable Type.

Example



Ordering Example

Part Number - L
SSELBWN12L - 200
SSELBWN12L - 200 (L Type Greased)
SSELBWN12G - 200 (G Type Greased)
Alternative grease types available.
P.531



Alterations

Part Number - L - (MC, RLC, LLC, B3, B4)
SSEL2BWN16 - 450 - MC

Alterations	Code	Spec.
Tapped Hole	MC	Changes the rail mounting holes from counterbored holes to tapped holes. H MC 9 M4 12 M4 14 M5 16 M5
Rail End Cut	LLC	Cuts rail ends. Ordering Code: LLC H L Cut N 9 5 5 12 5 5 14 5 10 16 5 10 Rail is cut with the product ID facing out (datum on other side). ⚠ Applicable to Selectable Type only. ⚠ Overall length will be shorter by cutting.
3-Block Specifications	B3	Add 2 blocks to 1-block product to ship as 3-block separate item. ⚠ There are restrictions for the L dimension length. See "Selectable Shortest Rail Length" for details. Selection Example: SSELBWN9-230-B3
4-Block Specifications	B4	Add 3 blocks to 1-block product to ship as 4-block separate item. ⚠ There are restrictions for the L dimension length. See "Selectable Shortest Rail Length" for details. Selection Example: SELBWN14-430-B4

Additional Block Price

H	B3: Price Adder		B4: Price Adder	
	Stainless Steel	Carbon Steel	Stainless Steel	Carbon Steel
9				
12				
14				
16				

Selectable Shortest Rail Length for B3/B4

H	B3 (3-block)		B4 (4-block)	
	Stainless Steel	Carbon Steel	Stainless Steel	Carbon Steel
9	170	200		
12	200	260		
14	230	310		
16	270	350		

Options for Linear Guide

Position Retaining Parts	Block / Rail Fixing Parts