

Linear Guides for Medium/Heavy Load - Stainless Steel

Normal Clearance

= For customers using industry standard products =

Frame-surrounded products are compliant with the industry standard specifications (Standard Block Type).
Select the block from this spec.

Features: Linear Guides for Medium and Heavy Load excellent in corrosion resistance.

Lubrication Units MX
Provides long term maintenance-free operation.

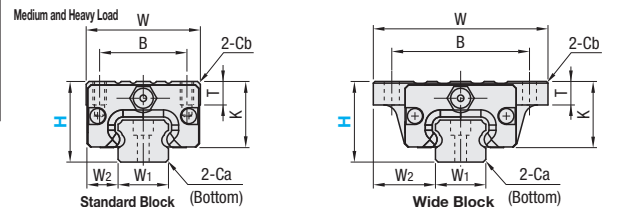
Industry Standard



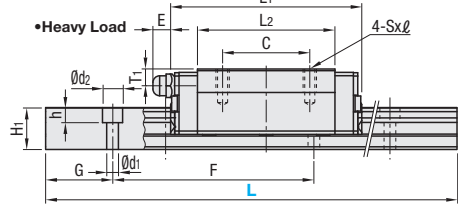
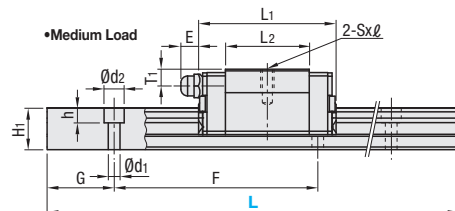
RoHS 10
Blocks and rails are not sold as separate items. Normal Clearance Type has guaranteed radial clearances and accuracies as sets of blocks and rails.

Block Type	Type		MX (Lubrication Units)	L Dimension	Number of Blocks	Material Hardness
	Medium Load	Heavy Load				
Standard Block	SSVR	SSXR	Blank: None -MX: Provided	Selectable	1	Stainless Steel 56HRC~
	SSV2R	SSX2R		Configurable	2	
	SSVRL	SSXRL		Configurable	1	
	SSV2RL	SSX2RL		Configurable	2	
Wide Block	SSVW	SSXW		Selectable	1	
	SSV2W	SSX2W		Configurable	2	
	SSVWL	SSXWL		Configurable	1	
	SSV2WL	SSX2WL		Configurable	2	

Heat Resistant Temperature: -20 ~ 80°C



Dimension Diagram of Blocks with MX (Lubrication Units)



For L Configurable, G dimensions differ from those shown in the table below. For details, see P.531.

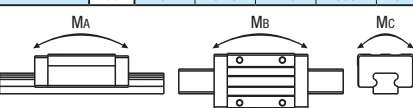
- Precautions for Use**
 - Blocks are equipped with retainers to prevent balls from falling off. For how to handle the blocks, see P.525.
 - Radial clearances and accuracies are not guaranteed if the blocks and rails are interchanged from the original set combinations.
 - Straight grooves are provided on datum planes. Be sure to match the datum lines when using.
 - Rails cannot be connected end to end.
 - The accuracy of Linear Guides is guaranteed after mounting the rail (after fastening screws on the rail and pushing it onto the datum plane).
 - Minor bending of the rail will be adjusted after being mounted and will not affect the performance.
- Others**
 - Filled with Lithium soap based grease (Alvania Grease S2 by Showa Shell Sekiyu K.K.).
 - Grease Fittings: Straight Type for H24 and Angled Type for H28 and H33.
 - Grease Fitting is screw-in type, and thus, can be repositioned.
 - For Operating Life Calculation, see P.527.
 - For operating life calculations, use our free calculation software from http://download.misumi.jp/mol/fa_soft.html.

Block Type	MX	H	L	Block Dimension										Guide Rail Dimension														
				Type		W	Standard	L1	MX	B	C	Sxφ	L2	K	T	Cb	Grease Fitting	Mounting Hole	E	T1	H1	W1	W2	Ca	Counterbored Hole	d1xdz	F	G
				Medium Load	(1 block) (2 blocks)																							
Heavy Load	(1 block) (2 blocks)	28	160~700 (220)	42 (59)	47	56.6	32 (49)	-	M5x8 (5.5)	27.6	22.5	7.5 (9)	1	M6xP0.75	13	6	15.5	20	11 (19.5)	0.6	6x9.5x8.5	60	20					
		33	160~700 (220)	48 (73)	59	68.6	35 (60)	-	M6x9 (7)	37	26.5	8 (10)	1	M6xP0.75	13	6.8	18	23	12.5 (25)	0.8	7x11x9	60	20					
		24	100~700 (220)	34 (52)	57	66.6	26 (41)	26	M4x7 (4.5)	41	20	7 (7)	0.85 (0.5)	M5xP0.8	6	5	12.5	15	9.5 (18.5)	0.5	3.5x6x4.5	60	20					
		28	160~700 (220)	42 (59)	67	76.6	32 (49)	32	M5x8 (5.5)	47.6	22.5	7.5 (9)	1	M6xP0.75	13	6	15.5	20	11 (19.5)	0.6	6x9.5x8.5	60	20					
		33	160~700 (280)	48 (73)	83	92.6	35 (60)	35	M6x9 (7)	61	26.5	8 (10)	1	M6xP0.75	13	6.8	18	23	12.5 (25)	0.8	7x11x9	60	20					

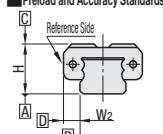
L Dimension: Dimensions in () are for 2-Block Type.

Sxφ Dimensions: Dimensions in () are for Wide Block Type.

Block	H	Basic Load Rating/Allowable Static Moment			Mass			
		C (Dynamic) kN	Co (Static) kN	MA, Mb, N · m	Mc N · m	Block kg	Guide Rail kg/m	
Medium Load	24	5.0	8.23	33	57	0.15	0.20	1.5
	28	7.2	12.1	58	135	0.20	0.25	2.4
	33	11.7	19.6	109	225	0.30	0.40	3.4
Heavy Load	24	8.6	14.2	69	98	0.20	0.25	1.5
	28	12.5	21.3	155	232	0.30	0.35	2.4
	33	20.2	34.5	275	393	0.45	0.60	3.4



Preload and Accuracy Standards

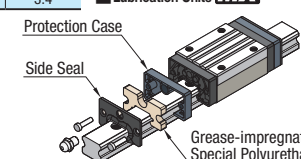


Normal Clearance Type

Radial Clearance (µm)	Dimensional Accuracy (µm)	Standard Grade
H24	-4~+2	±100
H28	-5~+2	20
H33	-6~+3	±100

Height H Tolerance	±100
Pair Variation of Height H	20
Width W2 Tolerance	±100
Pair Variation of Width W2	H24, 28: 20 H33: 30
Running Parallelism of Plane C against Plane A	See P.525
Running Parallelism of Plane D against Plane B	See P.525

Lubrication Units MX



Advantages of Lubrication Unit MX: Provides long term maintenance-free operation. Reduces maintenance cost. Most suitable where the design does not allow lubrication. For details, see P.530.

H	Selectable L	Unit Price							
		Medium Load				Heavy Load			
		1 block	2 blocks	1 block	2 blocks	1 block	2 blocks	1 block	2 blocks
24	100	SSVR	SSVW	SSV2R	SSV2W	SSXR	SSXW	SSX2R	SSX2W
	160								
	220								
	280								
	340								
	400								
	460								
	520								
	580								
	640								
	700								
	28	160							
220									
280									
340									
400									
460									
520									
33	160								
	220								
	280								
	340								
	400								
	460								
	520								

L Dimension Configurable Type (1mm Increment)

H	Selectable L	Unit Price							
		Medium Load				Heavy Load			
		1 block	2 blocks	1 block	2 blocks	1 block	2 blocks	1 block	2 blocks
24		SSVRL	SSVWL	SSV2RL	SSV2WL	SSXRL	SSXWL	SSX2RL	SSX2WL
	28								
	33								

For calculation of L Dimension Configurable Type (1mm Increment), add the above amount to the unit price of the Selectable Type longer than, and closest to this L Dimension Configurable Type.

MX (Lubrication Unit) Unit Price

H	Unit Price	
	1 block	2 blocks
24		
28		
33		

Price of Guide Rails with MX (Lubrication Unit) = Linear Guide Unit Price + MX Unit Price



Ordering Example

Part Number - L

- SSXRL28 - 575 (With Lubrication Units)
- SSXRL-MX28 - 575 (Low Temperature Black Chrome Plating)
- RSXRL28 - 575 (L Type Greased)
- SSXRL28L - 575 (L Type Greased)
- SSXRL28G - 575 (G Type Greased)

Low Temperature Black Chrome Plating and various Grease types available as alternative (Except Blocks with Lubrication Units) P.532



Alterations

Part Number - L - (RLC, LLC...etc.)

- SSXR33 - 520 - RLC

Alterations	Code	Spec.
Rail End Cut	Left End Cut LLC	Cuts rail ends. Ordering Code LLC
		H L Cut N
		24 10 10 28 33
Rail is cut with the product ID facing out (datum on other side).	Right End Cut RLC	Applicable to Selectable Type only.
		Overall length will be shorter by cutting.
Parallel Use of 2 Rails	WC	Pair variation of Height H between 2 rails is set within 20µm.
		Two rails are shipped as a pair. Specify the actual rail quantity (even number) to order, not "pairs". Not applicable to low temperature chrome plated products.
3-Block Specifications	B3	Add 2 blocks to 1-Block product to ship as 3-Block separate item. Selection Example: SSVR24-400-B3
4-Block Specifications	B4	Add 3 blocks to 1-Block product to ship as 4-Block separate item. Selection Example: SSVR24-400-B4

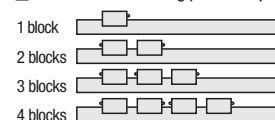
Medium Load

H	B3:1Code				B4:1Code			
	Standard	Wide	Standard MX	Wide MX	Standard	Wide	Standard MX	Wide MX
24								
28								
33								

Heavy Load

H	B3:1Code				B4:1Code			
	Standard	Wide	Standard MX	Wide MX	Standard	Wide	Standard MX	Wide MX
24								
28								
33								

Position of Grease Fitting (Reference plane on the front side)



Selectable Shortest Rail Length for B3/B4

H	Medium Load		Heavy Load	
	B3 (3-Block)	B4 (4-Block)	B3 (3-Block)	B4 (4-Block)
24	280	340	340	400
28	340	400	400	460
33	340	400	400	520