

Linear Guides for Medium/Heavy Load

With Dowel Holes, Normal Clearance

Lubrication Unit **MX**
Provides long term maintenance-free operation.

Features: MISUMI original specifications with dowel holes. Requires less time for assembly and has better repeatability.

MISUMI Original

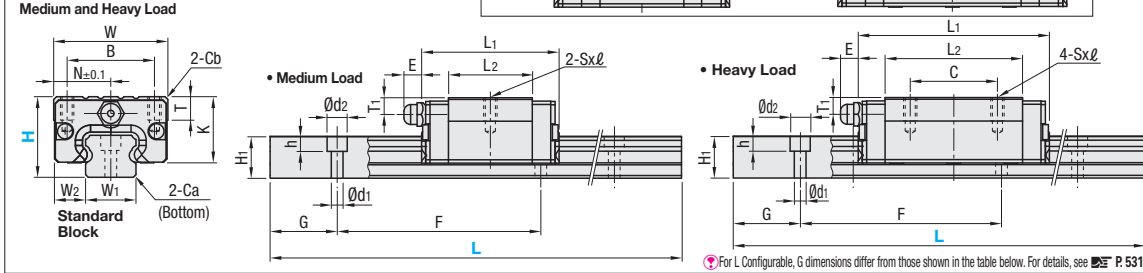
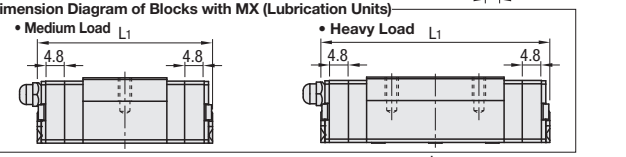
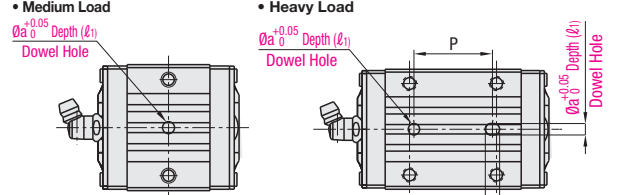


Blocks and rails are not sold as separate items. Normal Clearance Type has guaranteed radial clearances and accuracies as sets of blocks and rails.

RoHS10

Block Standard	Type		MX (Lubrication Units)	L Dimension	Number of Blocks	Material Hardness
	Medium Load	Heavy Load				
SVRN SV2RN SVRNL SV2RNL	SXRN	SXRNL	Blank: None -MX: Provided	Selectable	1	Carbon Steel 58HRC~
	SX2RN	SX2RNL		2		
	SXRNL	SXRNL		1		
	SX2RNL	SX2RNL		2		

Heat Resistant Temperature: -20 ~ 80°C

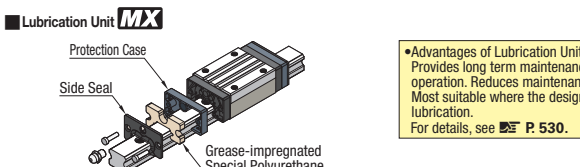
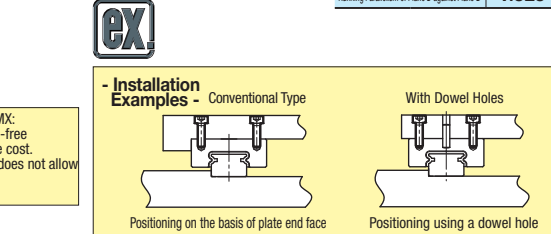
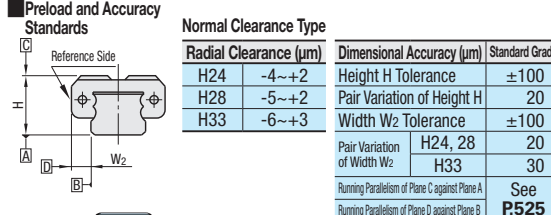


- Precautions for Use**
 - Blocks are equipped with retainers to prevent balls from falling off.
 - For how to handle the blocks, see P. 525.
 - Radial clearances and accuracies are not guaranteed if the blocks and rails are interchanged from the original set combinations.
 - Straight grooves are provided on datum planes. Be sure to match the datum lines when using.
 - Rails cannot be connected end to end.
 - The accuracy of Linear Guides is guaranteed after mounting the rail (after fastening screws on the rail and pushing it onto the datum plane).
 - Minor bending of the rail will be adjusted after being mounted and will not affect the performance.
- Others**
 - Filled with Lithium soap based grease (Alvania Grease S2 by Showa Shell Sekiyu K.K.).
 - Grease Fittings: Straight Type for H24 and Angled Type for H28 and H33.
 - Grease Fitting is screw-in type, and thus, can be repositioned.
 - For operating life calculation, see P. 527.
 - For operating life calculations, use our free calculation software from http://download.misumi.jp/mol/fa_soft.html.

Part Number	Type	MX	H	Block Dimension										Guide Rail Dimension															
				L	W	Std.	L1	B	C	Sxℓ	L2	K	T	Cb	Grease Fitting	Dowel Hole Dimensions	H1	W1	W2	Ca	Counterbored Hole	F	G						
Medium Load (1 block) SVRN SV2RN SVRNL SV2RNL	Blank: None -MX: With MX		24	100-1480 (160)	34	41	50.6	26	-	M4x7	25	20	7	0.85	M5xP0.8	6	5	17	3	-	4	12.5	15	9.5	0.5	3.5x6x4.5	60	20	
			28	160-1960 (220)	42	47	56.6	32	-	M5x7.5	27.6	22.5	7.5	1	M6xP0.75	13	6	21	4	-	5	15.5	20	11	0.6	6x9.5x8.5	60	20	
			33	160-1960 (220)	48	59	68.6	35	-	M6x9	37	26.5	8	1	M6xP0.75	13	6.8	24	4	-	5	18	23	12.5	0.8	7x11x9	60	20	
			24	100-1480 (220)	34	57	66.6	26	26	M4x7	41	20	7	0.85	M5xP0.8	6	5	17	3	4	24	4	12.5	15	9.5	0.5	3.5x6x4.5	60	20
Heavy Load (1 block) SXRNL SX2RNL			24	100-1480 (220)	42	67	76.6	32	32	M5x7.5	47.6	22.5	7.5	1	M6xP0.75	13	6	21	4	5	28	5	15.5	20	11	0.6	6x9.5x8.5	60	20
			28	160-1960 (220)	48	83	92.6	35	35	M6x9	61	26.5	8	1	M6xP0.75	13	6.8	24	4	5	35	5	18	23	12.5	0.8	7x11x9	60	20
			33	160-1960 (280)	48	83	92.6	35	35	M6x9	61	26.5	8	1	M6xP0.75	13	6.8	24	4	5	35	5	18	23	12.5	0.8	7x11x9	60	20
			24	100-1480 (220)	34	57	66.6	26	26	M4x7	41	20	7	0.85	M5xP0.8	6	5	17	3	4	24	4	12.5	15	9.5	0.5	3.5x6x4.5	60	20

L Dimension: Dimensions in () are for 2-Block Type. kgf=Nx0.101972

Block	H	Basic Load Rating		Allowable Static Moment		Mass		
		C (Dynamic) kN	Co (Static) kN	MA, Mb N-m	Mc N-m	Block kg	Guide Rail kg/m	
Medium Load	24	5.0	8.23	33	57	0.15	0.20	1.5
	28	7.2	12.1	58	135	0.20	0.25	2.4
	33	11.7	19.6	109	225	0.30	0.40	3.4
Heavy Load	24	8.6	14.2	69	98	0.20	0.25	1.5
	28	12.5	21.3	155	232	0.30	0.35	2.4
33	20.2	34.5	275	393	0.45	0.60	3.4	



Advantages of Lubrication Unit MX:
Provides long term maintenance-free operation. Reduces maintenance cost. Most suitable where the design does not allow lubrication. For details, see P. 530.

* marked sizes are not available for Low Temperature Black Chrome Plated Type.

H	L	Unit Price			
		Medium Load		Heavy Load	
		1 block	2 blocks	1 block	2 blocks
24	100	SVRN	SV2RN	SXRN	SX2RN
	160				
	220				
	280				
	340				
	400				
	460				
	520				
	580				
	640				
	700				
	760				
	820				
	880				
	940				
	1000				
28	*1120				
	*1240				
	*1360				
	*1480				
	160				
	220				
	280				
	340				
	400				
	460				
	520				
	580				
	640				
	700				
	760				
	820				
880					
940					
1000					
33	*1120				
	*1240				
	*1360				
	*1480				
	*1600				
	*1720				
	*1840				
	*1960				
	160				
	220				
	280				
	340				
	400				
	460				
	520				
	580				
640					
700					
760					
820					
880					
940					
1000					

H	L Dimension Configurable Type (1mm Increment)	Unit Price			
		Medium Load		Heavy Load	
		1 block	2 blocks	1 block	2 blocks
24		SVRNL	SV2RNL	SXRNL	SX2RNL
28					
33					

For calculation of L Dimension Configurable Type (1mm Increment), add the above amount to the unit price of the Selectable Type longer than, and closest to this L Dimension Configurable Type.

H	L	MX (Lubrication Unit) Unit Price	
		1 block	2 blocks
24			
28			
33			

Price of Guide Rail with MX (Lubrication Unit) = Linear Guide Unit Price + MX Unit Price

Ordering Example

Part Number - L

- SVRN28 - 880 (With Lubrication Units)
- SVRN-MX28 - 880 (Low Temperature Black Chrome Plating)
- SVRN28L - 880 (L Type Greased)
- SVRN28G - 880 (G Type Greased)

Low Temperature Black Chrome Plating and various Grease types available as alternative (Except Blocks with Lubrication Units).
P.532

Alterations

Part Number - L - (TMS, TMC, RLC, LLC, B3, B4)

SVRN28 - 880 - TMC

Alterations	Code	Spec.
TMS: Tapped Hole Machining + 2 Stopper Plates	TMS TMC	Adds tapped holes on both rail ends to avoid block fall-off. H24 H28, 33
TMC: Tapped Hole Machining only		M3xP0.5 Depth 5 Tapped Hole For Stopper Plates Details, see P. 612. Applicable to Carbon Steel Type only.
Block Stopper Plate	LLC	Cuts rail ends. Ordering Code: LLC
LLC		Left End Cut Right End Cut
RLC	RLC	Applicable to Selectable Type only. Overall length will be shorter by cutting. Not applicable to H dimension 24 of L dimension 100.
3-Block Specifications		B3
4-Block Specifications	B4	Add 2 blocks to 1-block product to ship as 3-block separate item. Selection Example: SXRNL24-400-B3
		Add 3 blocks to 1-block product to ship as 4-block separate item. Selection Example: SXRNL24-400-B4

H	B3: Price Adder		B4: Price Adder	
	Standard	Standard MX	Standard	Standard MX
24				
28				
33				

H	B3: Price Adder		B4: Price Adder	
	Standard	Standard MX	Standard	Standard MX
24				
28				
33				



H	Medium Load		Heavy Load	
	B3 (3-block)	B4 (4-block)	B3 (3-block)	B4 (4-block)
24	280	340	340	400
28	340	400	400	460
33	340	400	400	520