

Simplified Slide Rails

Aluminum, Lubrication-Free

Load Rating: 28N~110N/pc

Simplified Slide Rails

Stainless Steel, Retainer

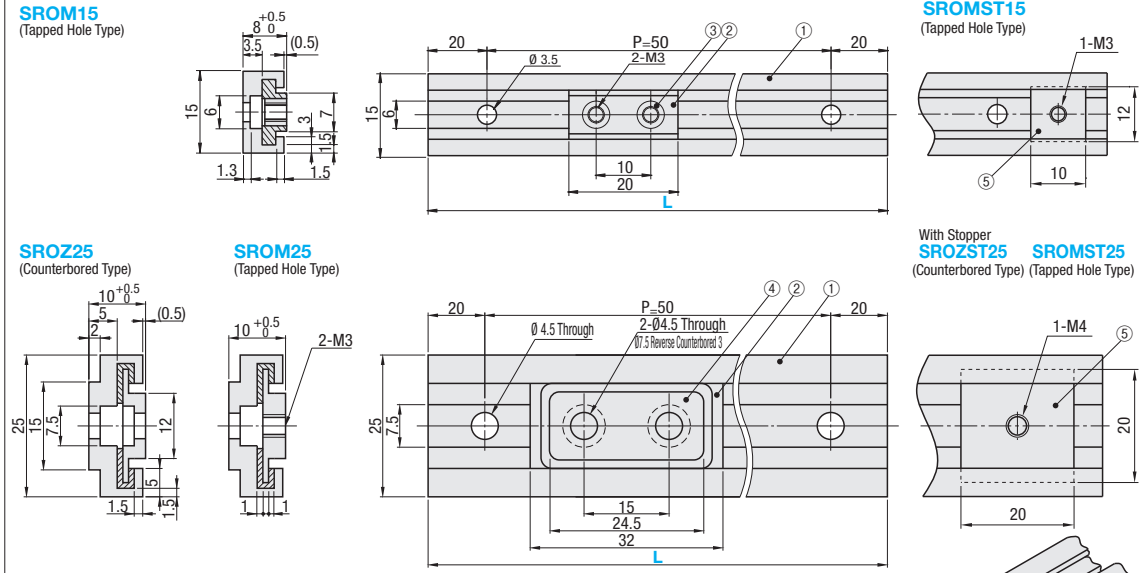
Load Rating: 65N~120N/pc

Features: Sliders are made of polyacetal resin excellent in sliding property, and is maintenance-free.



Type		Part Name	Material	Surface Treatment
No Stopper	With Stopper			
SROM (Tapped Hole Type)	SROMST (Tapped Hole Type)	① Rail	Aluminum Alloy	Clear Anodize
SROZ (Counterbored Type)	SROZST (Counterbored Type)	② Slider	Polyacetal	-
		③ Slider	C3604 Equivalent	-
		④ Stopper	Aluminum Alloy	Clear Anodize
		⑤ Set Screw	Stainless Steel	-

To prevent the slider fall-off, select with-stopper type.



Clearance between a rail and a slider is approximately 0.3 to 0.9 mm. Use in places where guides are subjected to moment load is not recommended. SROMST and SROZST (with stoppers) include 2 stoppers each. For installation of rails, use Hex Socket Extra Low Head Cap Screw (P.2-194) or nut (P.2-241). <Stopper> Retaining stopper can be mounted at any position on the rail.

Part Number Type	No.	L Select	Mounting Number of Holes	Effective Stroke		Slider 1 pc.	Load Rating N/kgf	Unit Price	
				No Stopper ¹⁾	With Stopper ²⁾			SROM15	SROMST15
	90	2	64	44					
	140	3	114	94					
	190	4	164	144					
	240	5	214	194					
	290	6	264	244					
	340	7	314	294					
	390	8	364	344					
	440	9	414	394					
	490	10	464	444					
	540	11	514	494					
	590	12	564	544					
	640	13	614	594					
	690	14	664	644					
	740	15	714	694					
	790	16	764	744					
	840	17	814	794					
	890	18	864	844					
	940	19	914	894					
	990	20	964	944					
	1040	21	1014	994					

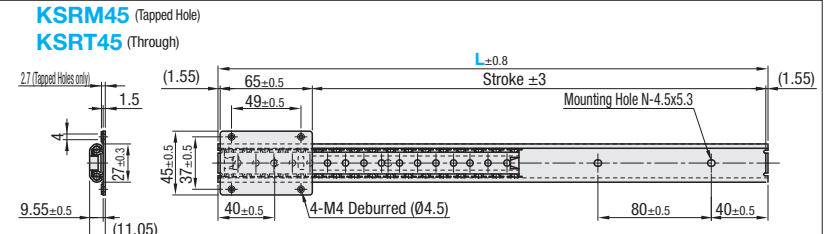
¹⁾ Effective stroke (No Stopper) is the dimension value with a margin of approx. 3mm set from each end to avoid dropout of sliders. ²⁾ Effective stroke (With Stopper) is the dimension value with a margin of approx. 3mm set from contacts of sliders and stoppers to avoid conflict between them. Maximum Allowable Speed is 0.85m/sec

Ordering Example: Part Number - L, SROM15 - 1040, SROZ25 - 540

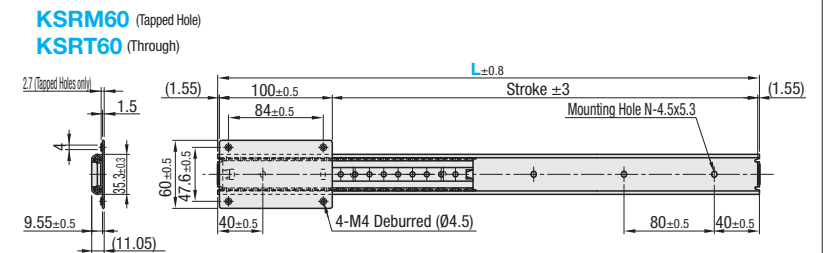
Alterations Code: Part Number - L - (T, Z), SROM25 - 540 - T2

Alterations Code	Spec.
T	Sliders are added. Please specify additional slider quantity after T and Z. Selection Example: Additional Slider Qty. Tapped Hole Counterbored, Ordering Code Slider Total Qty. 5 0 SROM25-540-T5 6, 1 2 SROM25-540-T1-22 4
Z	Added sliders are the same size as that of the original part number model. No. 15 L≥20 x Slider Total Qty. No. 25 L≥32 x Slider Total Qty. Possible to add up to 10 pcs.

Features: Corrosion resistant since made of stainless steel.



Drawing indicates KSRM Type. (Ø4.5) is dimension for KSRT.



Drawing indicates KSRM Type. (Ø4.5) is dimension for KSRT.

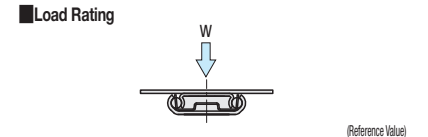
Part Name	Material
Slider	SUS304
Ball	SUS440C
Rail	SUS304

Use in places where guides are subjected to moment load is not recommended.

Part Number Type	No.	L	Stroke		Mounting Hole Qty.		Unit Price				
			KSRM45 KSRT45	KSRM60 KSRT60	KSRM45 KSRT45	KSRM60 KSRT60	KSRM45	KSRM60	KSRT45	KSRT60	
KSRM KSRT	45	160	91.9	56.9	2	2					
		240	171.9	136.9	3	3					
		320	251.9	216.9	4	4					
		400	331.9	296.9	5	5					
		480	411.9	376.9	6	6					
	60	560	491.9	456.9	7	7					
		640	571.9	536.9	8	8					
		720	651.9	616.9	9	9					
		800	-	696.9	-	10	-	-	-	-	-
		880	-	776.9	-	11	-	-	-	-	-
		960	-	856.9	-	12	-	-	-	-	
		1040	-	936.9	-	13	-	-	-	-	
		1200	-	1096.9	-	15	-	-	-	-	

Use M4 Recessed Truss Machine Screws (P.2-186) or Cross Recessed Pan Head Screws (P.2-226) to mount rails.

Ordering Example: Part Number - L, KSRM45 - 400



No.	45	60
Load Rating	65N	120N

* Values above are for one slider. * Values above are loads per 1 rail when 2 rails are used.

Features of Tapped Hole Type: This enables installation in / removal from slider surfaces, and requires less assembly time than for existing products.

