

Precision Ball Screws Standard Nut - Shaft Dia. 25, Lead 5, 10, 20

Accuracy Grade C5, C7

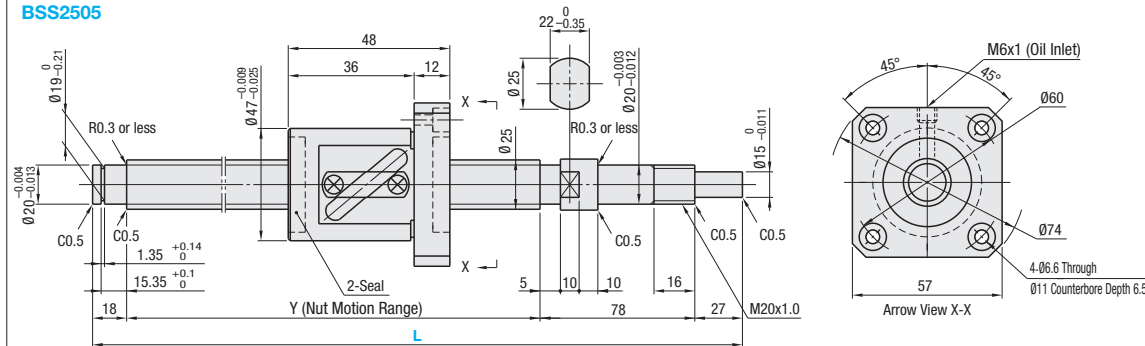
Points of comparison between similar products | Consider using this product if the usage environment is a high-load, and high-frequency drive application.



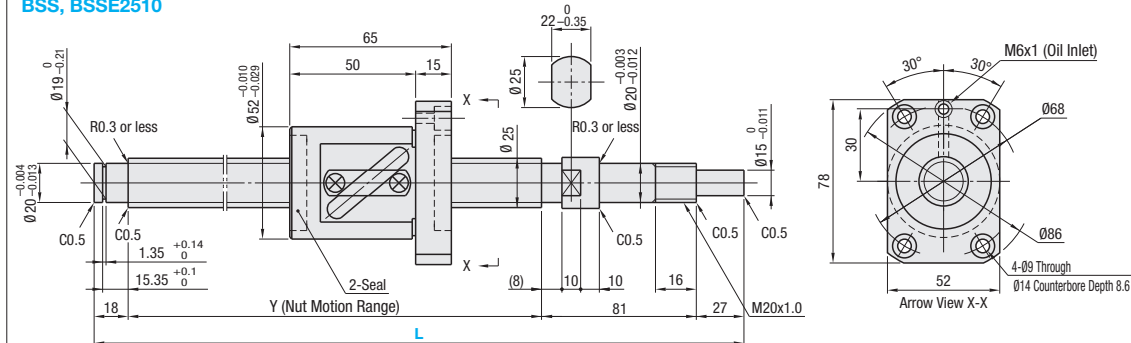
Nut Type	Type	Accuracy Grade	Shaft Dia.	Lead	Screw Shaft		Nut	
					Material	Hardness	Material	Hardness
Standard Nut	BSS	C5	25	5, 10, 20	AISI4150	Induction Hardened 58-62HRC	SCM420	Carburized 58-62HRC
	BSSE	C7		10, 20				

⚠ Ball bearings will fall out if the ball nut crosses the wrench flats.

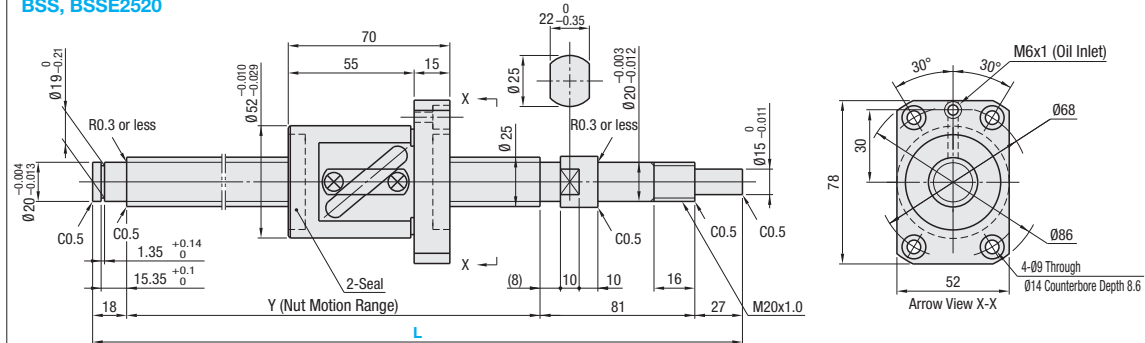
BSS2505



BSS, BSSE2510



BSS, BSSE2520



Nut Type	Accuracy Grade	Part Number		1mm Increment	Y	Ball Dia.	Ball Center Dia.	Screw Root Dia.	Number of Circuits	Basic Load Rating		Axial Play	Preload Torque N·cm	Twisting Direction	
		Type	Screw Shaft O.D.							Lead	L				C (Dynamic) kN
Standard Nut	C5	BSS	25	05	300-995	L-123	3.175	25.8	(22.5)	2.5 turns 1 row	9.4	22.2	0.005 or Less	6.0 or Less	Right
	C7	BSS		10	300-1500	L-126	4.7625	26	(21)	1.5 turns 1 row	16.1	33.4	0.005 or Less	6.0 or Less	
	C5	BSSE	20	300-1500	L-126	(21)					10.4	20.1	0.030 or Less	-	
	C7	BSSE					0.030 or Less	-	0.030 or Less	-					

Kgf=Nx0.101972

Accuracy Grade	Part Number	Unit Price 1 ~ 4 pc (s).							
		L300 -400	L401 -595	L596 -600	L601 -800	L801 -995	L996 -1000	L1001 -1200	L1201 -1500
C5	BSS2505								
C5	BSS2510								
C7	BSSE2510								
C5	BSS2520								
C7	BSSE2520								



Part Number	-	L
BSS2510	-	700
BSSE2510L	-	420 (L Type Greased)
BSSE2510G	-	420 (G Type Greased)

Notes

- ⚠ Filled with lithium soap based grease (Alvania Grease S2 made by Showa Shell Sekiyu K.K.).
- ⚠ Cautions: Do not let the nuts overrun or remove the nuts from the screw shafts. It may cause the balls to fall out or damage the ball recirculation parts.
- ⚠ Various grease options are available. For price and specifications, see P.686
- ⚠ For accuracy of Ball Screws, see P.2223 and P.2224.
- ⚠ For details of Support Units, see P.753 ~ P.778.
- ⚠ Use one of the support unit accessory collars on the fastening nut side.

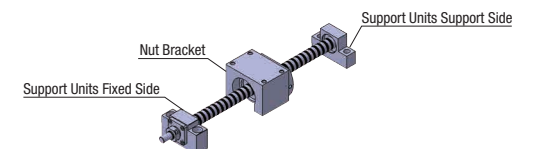
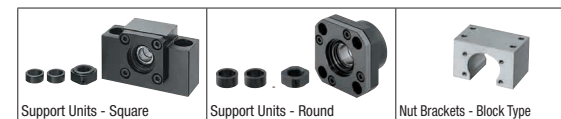


Part Number	-	L	-	(FC, MC-etc.)
BSS2505	-	700	-	RLC

Alterations	Code	Spec.
No Machining on Support Side Shaft End	NC	No machining added on the support side shaft end. Ordering Code NC
Ball Nut Orientation Reversed (Support Side) (Fixed Side) Std. Revised	RLC	Changes the nut direction. Ordering Code RLC
No Retaining Ring Groove on Support Side Shaft End	RNC	Retaining ring groove is not machined on the support side shaft end. Ordering Code RNC ⚠ Combination with FC is not available.
Change Support Side Shaft End Machining	GC	Changes the machining on the support side. Q is selectable from 10, 12, 15 and 20. G=1mm Increment Ordering Code GC-Q10-G20 ⚠ 5≤G≤Qx3 ⚠ Y dimension is shortened.
Change Support Side Shaft End Length	FC	Changes the length of the support side shaft end. FC=1mm Increment Ordering Code FC20 ⚠ 19≤FC≤60 ⚠ Y dimension is shortened.

Alterations	Code	Spec.
Tapped Hole on Support Side Shaft End	MC	Adds a tapped hole on the support side shaft end. MC=1mm Increment Ordering Code MC40 ⚠ Y dimension is shortened.
Keyway on Fixed Side Shaft End Detailed Keyway Dimensions P.684	KC	Adds a keyway on the fixed side shaft end. KC=1mm Increment Ordering Code KC20 ⚠ 5≤KC≤26
Keyway on Fixed Side Shaft End	KLC	Adds a keyway at a customer specified area on the fixed side shaft end. (Keyway dim. is same as KC.) K, S=1mm Increment Ordering Code KLC-K20-S3 ⚠ 6≤K+S≤26
Flat Machined on Fixed Side Shaft End	SC	Adds a flat on the fixed side shaft end. SC=1mm Increment Ordering Code SC20 ⚠ 5≤SC≤26
2 Flats Machined on Fixed Side Shaft End	SWC, SGC, SWGC	Adds two flats on the fixed side shaft end. SWC: 90° Position SGC: 120° Position 1mm Increment Ordering Code SWC20 ⚠ 5≤SWC, SGC≤26

Peripherals: Combination of the following parts is available.



Combination with Support Units

Type	Screw Shaft O.D.	Lead	Recommended Support Unit					
			Part Number Type No.	Shape	Fixed Side	Support Side	Page	
BSS BSSE	25	05 10 20	BRW	20	Round	○		P.767
			BUR	20		○		P.768
			BSW	20	Square		○	P.761
			BUN	20			○	P.762

Combination with Nut Brackets

Type	Screw Shaft O.D.	Lead	Recommended Nut Bracket		
			Part Number Type No.	Page	
BSS BSSE	25	05 10 20	BNFB	2505S	P.780
			BNFM BNFR BNFA	2510S	P.780
				2520S	P.780

⚠ Other than the part numbers shown above, a wide variety of Support Units are also available. (P.761-P.778)

⚠ Other than the part numbers shown above, a wide variety of Nut Brackets are also available. (P.780)