

# Miniature Clamp Levers / Flat Clamp Levers

# Y-Shaped Clamp Levers / Wing-Shaped Clamp Levers / Clamp Levers with Captured Washer

## Miniature Clamp Levers

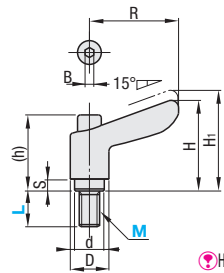


Type	Lever	Screw	Spring				
Threaded	Tapped	M Material	S Surface Treatment	M Material	S Surface Treatment	M Material	S Surface Treatment
CLDMC	CLDFC	Zinc Die Casting	Baked Paint	S45C	Black Oxide	SUS304-WPB	
CLMSC	CLFSC	Zinc Die Casting	Baked Paint	S45C	Black Oxide	SUS304-WPB	
CLCMC	CLCFC	Chrome Plating, Chrome over Satin Nickel		SUS303	-	SUS304-WPB	

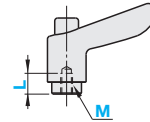
Chrome over satin nickel is a non-gloss finish.

Threaded  
CLDMC  
CLMSC  
CLCMC

Tapped  
CLDFC  
CLFSC  
CLCFC



\*Hex Socket B is created during a production of Levers. It is not a socket used during an installation of Levers.



M	R	H	H <sub>1</sub>	(h)	S	D	d	Number of Serrated Teeth	B	Max. Load F <sub>max.</sub> (N)				Reference Mass (g)	
										SUS303	S45C	SUS303	S45C	Threaded	Tapped
4										48	80	1.8	3.0	25	23
5	30	29	32.5	25.8	4	13	10	16	3	65	108	2.9	4.8	26	24
6										110	184	4.1	6.8	32	30
8	42	40	43.5	32.3	7	17.5	14	20	4	189	316	7.5	12.5	60	-

Part Number	Type	M	L Selection	Lever Color			Unit Price			Part Number	Type	M	L Selection	Lever Color			Unit Price							
				CLDMC, CLMSC	CLCMC	CLDFC, CLFSC, CLCFC	Threaded	Tapped	CLDMC, CLMSC, CLCFC					Threaded	Tapped	CLDFC, CLFSC, CLCFC	Threaded	Tapped						
Threaded CLDMC CLMSC CLCMC	M	4	*8 12 16 20 25	B (Black)	C (Chrome Plating)	Tapped CLDFC CLFSC CLCFC	4	7	B (Black) M (Orange) S (Silver Grey) R (Red) Y (Yellow)	C (Satin Nickel Chrome Plating)	4	5	7	B (Black) M (Orange) S (Silver Grey) R (Red) Y (Yellow)	C (Satin Nickel Chrome Plating)	4	5	7	B (Black) M (Orange) S (Silver Grey) R (Red) Y (Yellow)	C (Satin Nickel Chrome Plating)				
		5	*8 12 16 20 25 32	M (Orange)	SC (Satin Nickel Chrome Plating)																5	7	M (Orange)	SC (Satin Nickel Chrome Plating)
		6	*8 12 16 20 25 32	S (Silver Gray)	SC (Satin Nickel Chrome Plating)																6	6	S (Silver Gray)	SC (Satin Nickel Chrome Plating)
		*8	16 20 25 32	*R (Red)	SC (Satin Nickel Chrome Plating)																		*R (Red)	SC (Satin Nickel Chrome Plating)

\*Red and yellow are not available for M8 and L8 size levers. \*M8 is not applicable to CLCMC

Features: Suitable for use without interfering when upper space is narrow.

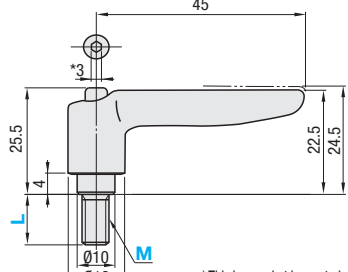
## Flat Clamp Levers



Type	Lever	Screw	Spring				
Threaded	Tapped	M Material	S Surface Treatment	M Material	S Surface Treatment	M Material	S Surface Treatment
CLDMT	CLDMST	Zinc Die Casting	Electrostatic Paint	S45C	Black Oxide	SUS304-WPB	
CLDMT	CLDMST	Zinc Die Casting	Electrostatic Paint	SUS303	-	SUS304-WPB	

16 teeth (serrations).

Threaded  
CLDMT  
CLDMST

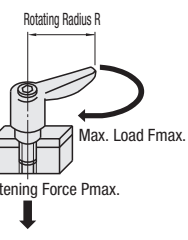


\*This hex socket is created during a production of Levers. It is not a socket used during an installation of Levers.

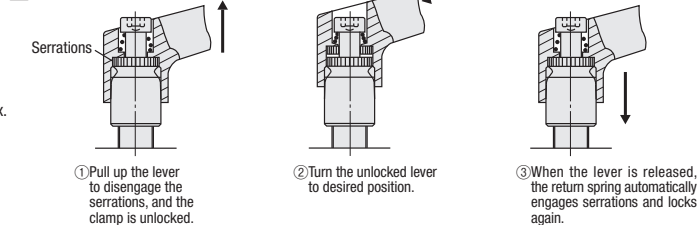
Part Number	Type	M	L Selection	Lever Color	Max. Load F <sub>max.</sub> (N)				Reference Mass (g)	
					SUS303	S45C	SUS303	S45C	CLDMT	CLDMST
CLDMT CLDMST	M	4	12 16 20 25	B (Black)	48	80	1.8	3	33	
		5	12 16 20 25 32	M (Orange)	65	108	2.9	4.8	34	
		6	12 16 20 25 32	S (Silver Grey)	110	184	4.1	6.8	40	

Ordering Example: Part Number - L - Lever Color  
CLDMC4 - 12 - M  
CLDMT4 - 16 - M

## Load Direction



## How to Use



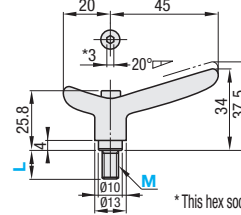
## Y-Shaped Clamp Levers



Type	Lever	Screw	Spring				
Threaded	Tapped	M Material	S Surface Treatment	M Material	S Surface Treatment	M Material	S Surface Treatment
CLDMY	CLDFY	Zinc Die Casting	Baked Paint	S45C	Black Oxide	SUS304-WPB	
CLMSY	CLFYS	Zinc Die Casting	Baked Paint	SUS303	-	SUS304-WPB	

16 teeth (serrations).

Threaded  
CLDMY  
CLMSY



\*This hex socket is created during a production of Levers. It is not a socket used during an installation of Levers.

Part Number	Type	M	L Selection	Lever Color	Max. Load F <sub>max.</sub> (N)		Max. Tightening Force P <sub>max.</sub> (kN)		Reference Mass (g)	Unit Price	
					SUS303	S45C	SUS303	S45C		CLDMY	CLMSY
CLDMY CLMSY	M	4	(12) 16 (20) 25	B (Black)	48	80	1.8	3	40		
		5	(12) 16 20 25 32	M (Orange)	65	108	2.9	4.8	40		
		6	12 16 20 25 32	S (Silver Grey)	110	184	4.1	6.8	41		

Dimensions in ( ) are not applicable to CLDMY

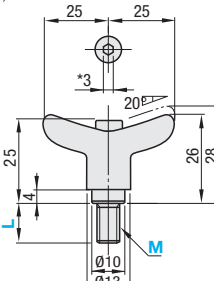
## Wing-Shaped Clamp Levers



Type	Lever	Screw	Spring				
Threaded	Tapped	M Material	S Surface Treatment	M Material	S Surface Treatment	M Material	S Surface Treatment
CLDMCH	CLDFCH	Zinc Die Casting	Electrostatic Paint	S45C	Black Oxide	SUS304-WPB	
CLMSCH	CLFCH	Zinc Die Casting	Electrostatic Paint	SUS303	-	SUS304-WPB	

16 teeth (serrations).

Threaded  
CLDMCH  
CLMSCH



\*This hex socket is created during a production of Levers. It is not a socket used during an installation of Levers.

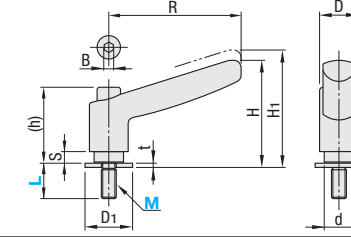
Part Number	Type	M	L Selection (Threaded)	L1 (Tapped)	Lever Color	Max. Load F <sub>max.</sub> (N)		Max. Tightening Force P <sub>max.</sub> (kN)		Reference Mass (g)		Unit Price		
						SUS303	S45C	SUS303	S45C	Threaded	Tapped	CLDMCH	CLMSCH	CLDFCH
Threaded CLDMCH CLMSCH Tapped CLDFCH	M	4	12 16 20 25	7	B (Black)	48	80	1.8	3	32	29			
		5	12 16 20 25 32		M (Orange)	65	108	2.9	4.8	33	29			
		6	12 16 20 25 32		S (Silver Grey)	110	184	4.1	6.8	34	29			

## Clamp Levers with Captured Washer



Type	Lever	Screw	Spring	Flat Washer				
Threaded	Tapped	M Material	S Surface Treatment	M Material	S Surface Treatment	M Material	S Surface Treatment	
CLDMST		Zinc Die Casting	Baked Paint	SUM23	Black Chromate	SUS304-WPB	S45C	Electroless Nickel Plating

CLDMST



\*Hex Socket B is created during a production of Levers. It is not a socket used during an installation of Levers.

Part Number	Type	M	L Selection	Lever Color	R	H	H <sub>1</sub>	(h)	S	D	d	D <sub>1</sub>	t	Number of Serrated Teeth	B	Max. Load F <sub>max.</sub> (N)	Max. Tightening Force P <sub>max.</sub> (kN)	Reference Mass (g)	Unit Price
					CLDMST	M	6	12 16 20 25 32	B (Black)	45	36.5	40	25.8	4	13	10	16	1.5	16
63.5	47	50.5	32.3	7						17.5	14	22	2	20	4	171	6.8	90	
78.5	56.5	60.5	37.6	8						21	16	28	2.5	24	4	221	10.8	182	
89	65.5	70.5	43.6	10						24	19	35	3	28	4	277	16.1	227	
93	70.5	74.5	45.6	14						24	19	35	3	28	4	277	16.1	227	

Ordering Example: Part Number - L(L1) - Lever Color  
CLDMY4 - 16 - S  
CLDMCH4 - 12 - M  
CLDFCH6 - 7 - B  
CLDMST6 - 25 - B