

Low Pressure Screw Fittings

Equal Dia.

Sockets

Type	Material	Surface Treatment
SGPPS	FCMB270	Hot Zinc Plating
SUTPS	SUS304	-
SUTPSS	SUS316	-

2-Rc (PT)

Parallel Female Thread (PS) Socket

Type	Material	Surface Treatment
SGPRP	Carbon Steel Pipes	Zinc Electroplating
SUTRP	SUS304	-

Double Long Socket

Type	Material	Surface Treatment
SUTPSR	SUS304	-

No. 6A-8A-10A-75

Other Than Above

45° Elbow

Type	Material	Surface Treatment
SGPHE	FCMB270	Hot Zinc Plating
SUTHE	SCS13A	-

RoHS 10

Part Number	Type	No.	Rc (PT)	SGPPS				SUTPS/SUTPSS		SGPPS		SUTPS		SUTPSS	
				(D)	L	(D)	(t)	(D)	L	Unit Price	Volume Discount Rate	Unit Price	Volume Discount Rate	Unit Price	Volume Discount Rate
6A	6A	1/8	15	23	19	13	4	15	23	-	-	-	-		
8A	8A	1/4	19	26	22	17	4	19	29	-	-	-	-		
10A	10A	3/8	24	31	27	18	5	22	30	-	-	-	-		
15A	15A	1/2	28	35	31	20	6	27	38	-	-	-	-		
20A	20A	3/4	34	41	37	24	6	33	40	-	-	-	-		
25A	25A	1	43	45	46	25	8	40	45	-	-	-	-		
32A	32A	1 1/4	51	50	54	28	8	49	51	-	-	-	-		
40A	40A	1 1/2	57	55	61	32	9	55.5	54	-	-	-	-		
50A	50A	2	70	60	75	34	9	68	64	-	-	-	-		

For orders larger than indicated quantity, please check with WOS.

Part Number	Type	No.	Rp (PS)	SGPRP		SUTRP		SGPRP		SUTRP	
				(D)	(L)	(D)	(L)	Unit Price	Volume Discount Rate	Unit Price	Volume Discount Rate
6A	6A	1/8	15	19	13.8	20	-	-	-	-	
8A	8A	1/4	19	27	17	25	-	-	-	-	
10A	10A	3/8	23	28	21	26	-	-	-	-	
15A	15A	1/2	28	37	25	33	-	-	-	-	
20A	20A	3/4	34.5	39	31	36	-	-	-	-	
25A	25A	1	41.5	46	38	43	-	-	-	-	
32A	32A	1 1/4	51	51	47	48	-	-	-	-	

For orders larger than indicated quantity, please check with WOS.

Part Number	Type	No.	(L) Selection	Rp (PS)	(D)	Unit Price				Volume Discount Rate			
						1 ~ 9 pc(s)				10 ~ 30 pcs.			
						L=50	L=75	L=50	L=75				
6A	6A		50	1/8	15								
8A	8A		50	1/4	19								
10A	10A		75	3/8	23								
15A	15A		75	1/2	26.5								
20A	20A		75	3/4	33								

For orders larger than indicated quantity, please check with WOS.

Part Number	Type	No.	Rc (PT)	SGPHE		SUTHE		SGPHE		SUTHE	
				(D)	L	(D)	L	Unit Price	Volume Discount Rate	Unit Price	Volume Discount Rate
6A	6A	1/8	18	16	17	16	-	-	-	-	
8A	8A	1/4	22	17	21	17	-	-	-	-	
10A	10A	3/8	26	19	25	19	-	-	-	-	
15A	15A	1/2	30	21	28	21	-	-	-	-	
20A	20A	3/4	36	25	35	25	-	-	-	-	
25A	25A	1	44	29	42	29	-	-	-	-	

For orders larger than indicated quantity, please check with WOS.

Caps

Type	Material	Surface Treatment
SGPPC	FCMB270	Hot Zinc Plating
SUTPC	SCS13A	-

RoHS 10

Plugs

Type	Material	Surface Treatment
SGPPP	SWCH10R Equiv.	Trivalent Chromate
SUPPP	SCS13A	-

RoHS 10

Round Nipples

Type	Material	Surface Treatment
SGPNP	SGP	Hot Zinc Plating
SUTNP	SUS304	-

RoHS 10

Double Long Nipples

Type	Material	Surface Treatment
SGPNPR	SGP	Hot Zinc Plating
SUTNPR	SUS304	-

RoHS 10

Part Number	Type	No.	Rc (PT)	SGPPC		SUTPC		SGPPC		SUTPC	
				(D)	L	(D)	L	Unit Price	Volume Discount Rate	Unit Price	Volume Discount Rate
6A	6A	1/8	19	14	18	16	-	-	-	-	
8A	8A	1/4	23	15	22	18	-	-	-	-	
10A	10A	3/8	26	17	26	20	-	-	-	-	
15A	15A	1/2	31	20	30	21	-	-	-	-	
20A	20A	3/4	37	24	36	24	-	-	-	-	
25A	25A	1	45	28	44	28	-	-	-	-	
32A	32A	1 1/4	54	30	53	30	-	-	-	-	
40A	40A	1 1/2	61	32	60	32	-	-	-	-	
50A	50A	2	74	36	73	36	-	-	-	-	

For orders larger than indicated quantity, please check with WOS.

Part Number	Type	No.	R (PT)	Square Size H	t	L		SGPPP		SUPPP	
						SGPPP	SUPPP	Unit Price	Volume Discount Rate	Unit Price	Volume Discount Rate
6A	6A	1/8	7	7	16	16	-	-	-	-	
8A	8A	1/4	9	8	19	19	-	-	-	-	
10A	10A	3/8	12	9	21	21	-	-	-	-	
15A	15A	1/2	14	10	26	25	-	-	-	-	
20A	20A	3/4	17	11	29	28	-	-	-	-	
25A	25A	1	19	12	31	31	-	-	-	-	
32A	32A	1 1/4	23	13	35	35	-	-	-	-	
40A	40A	1 1/2	26	14	36	36	-	-	-	-	
50A	50A	2	32	15	41	41	-	-	-	-	

Shape of H Part: No.6A ~ 50A = Square. For orders larger than indicated quantity, please check with WOS.

Part Number	Type	No.	R (PT)	D	L	d		SGPNP		SUTNP	
						SGPNP	SUTNP	Unit Price	Volume Discount Rate	Unit Price	Volume Discount Rate
6A	6A	1/8	10.5	24	6.5	6.5	100	130	-	-	
8A	8A	1/4	13.8	26	8.7	9.7	100	120	-	-	
10A	10A	3/8	17.3	28	12.1	13.1	100	130	-	-	
15A	15A	1/2	21.7	34	15.8	15.5	100	150	-	-	
20A	20A	3/4	27.2	38	21.6	21.3	100	160	-	-	
25A	25A	1	34.0	42	27.8	28.1	150	170	-	-	
32A	32A	1 1/4	42.7	50	35.9	35.8	210	240	-	-	
40A	40A	1 1/2	48.6	50	41.9	41.8	240	270	-	-	
50A	50A	2	60.5	58	53.2	53.6	360	390	-	-	

For orders larger than indicated quantity, please check with WOS.

Part Number	Type	No.	(L) Selection	R (PT)	(D)		(d)		Unit Price 1 ~ 30 pc(s).							
					SGPNPR	SUTNPR	SGPNPR	SUTNPR	L50	L75	L100	L125	L50	L75	L100	L125
6A	6A	50	1/8	10.5	-	6.2	-	-	-	-	-	-	-	-	-	-
8A	8A	75	1/4	13.4	13.8	9.2	9.4	-	-	-	-	-	-	-	-	-
10A	10A	100	3/8	17.4	17.3	12.9	12.7	-	-	-	-	-	-	-	-	-
15A	15A	100	1/2	21.9	21.7	16.5	16.1	-	-	-	-	-	-	-	-	-
20A	20A	125	3/4	27.2	27.2	21.5	21.4	-	-	-	-	-	-	-	-	-

For orders larger than indicated quantity, please check with WOS. The dimension D of SGPNPR has a tolerance of +0.5 mm.

i Operating Conditions of Fittings

Fluid State	Max. Operating Pressure (MPa)
Steam, Air, Gas, Oil: Up to 300°C	1.0
Steam, Air, Oil, Pulsating Water: Up to 200°C	1.4
Static Flow Water: Up to 120°C	2.0

*Pulsating Water is a stream of water that is generated under steady operating conditions and variation of pressure and flow rate occurs in cycles. (Except for transitional change)
 * Static Flow Water is a non-pulsating stream of water.
 * As fittings are cast products, () dimensions such as (D) and (L) are for reference, not guaranteed.

Ordering Example: Part Number - L
 SGPPS8A - 75
 SGPNNR8A - 75

Low Pressure Screw Fittings

Thread Coated Type

■ **Features:** Male threads are coated. Provides immediate out of the box operation.

■ **Steel Pipe Fittings**
Female/Male Elbows

Type	Material	Surface Treatment
SGCEL	FCMB270	Hot Zinc Plating
SUCEL	SCS13A	-

Ⓜ Allowable temperature: 150°C

■ **Steel Pipe Fittings**
Plugs

Type	Material	Surface Treatment
SGCPP	FCMB270	Hot Zinc Plating
SUCPP	SCS13A	-

Ⓜ Allowable temperature: 150°C

■ **Steel Pipe Fittings**
Round Nipples

Type	Material	Surface Treatment
SGCNP	SGP	Hot Zinc Plating
SUCNP	SUS304	-

Ⓜ Allowable temperature: 150°C

■ **Steel Pipe Fittings**
Hex Nipples

Type	Material	Surface Treatment
SGCNR	FCMB270	Hot Zinc Plating
SUCNR	SCS13A	-

Ⓜ Allowable temperature: 150°C

■ **Steel Pipe Fittings**
Bushings

Type	Material	Surface Treatment
SGCPB	FCMB270	Hot Zinc Plating
SUCPB	SCS13A	-

Ⓜ Allowable temperature: 150°C

Part Number	R Rc (PT)	SGCEL					SUCEL					SGCEL		SUCEL		
		(D)	(L1)	(L2)	A	B	(D)	(L1)	(L2)	A	B	Unit Price	Volume Discount Rate	Unit Price	Volume Discount Rate	
SGCEL SUCEL	6A	1/8	19	23	36	17	26	14.5	22	33	17	26				
	8A	1/4	22	26	42	19	30	21	26	41	19	30				
	10A	3/8	27	31	48	23	35	25	32	48	23	35				
	15A	1/2	31	38	56	27	40	29	38	55	27	40				
	20A	3/4	36	45	66	32	47	36	46	65	32	47				
25A	1	45	55	76.5	38	54	44	55	76	38	54					

Ⓜ For orders larger than indicated quantity, please check with WOS.

Part Number	R (PT)	Square Size H	t	L		SGCPP		SUCPP	
				SGCPP	SUCPP	Unit Price	Volume Discount Rate	Unit Price	Volume Discount Rate
SGCPP SUCPP	6A	1/8	7	7	16	16			
	8A	1/4	9	8	19	19			
	10A	3/8	12	9	21	21			
	15A	1/2	14	10	26	25			
	20A	3/4	17	11	29	28			
25A	1	19	12	31	31				

Ⓜ For orders larger than indicated quantity, please check with WOS.

Part Number	R (PT)	D	L	d		SGCNP		SUCNP	
				SGCNP	SUCNP	Unit Price	Volume Discount Rate	Unit Price	Volume Discount Rate
SGCNP SUCNP	6A	1/8	10.5	24	6.5	6.5			
	8A	1/4	13.8	26	8.7	9.7			
	10A	3/8	17.3	28	12.1	13.1			
	15A	1/2	21.7	34	15.8	15.5			
	20A	3/4	27.2	38	21.6	21.3			
25A	1	34	42	27.8	28.1				

Ⓜ For orders larger than indicated quantity, please check with WOS.

Part Number	R (PT)	B	L		d		SGCNR		SUCNR		
			SGCNR	SUCNR	SGCNR	SUCNR	SGCNR	SUCNR	Unit Price	Volume Discount Rate	Unit Price
SGCNR SUCNR	8A	1/4	17	34	34	12.5	12	7	7		
	10A	3/8	21	36	36	13	13	9	9		
	15A	1/2	26	43	42	16.5	16	13	13		
	20A	3/4	32	48	47	18.5	18	18	16		
	25A	1	38	52	52	20	20	24	22		

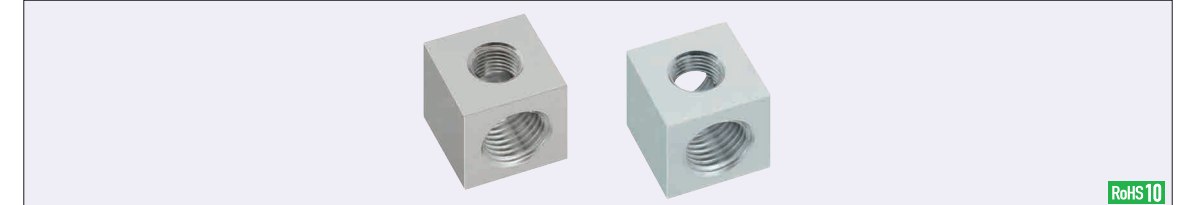
Ⓜ For orders larger than indicated quantity, please check with WOS.

Part Number	Rc (PT)	R (PT)	L	B	SGCPB		SUCPB	
					SGCPB	SUCPB	Unit Price	Volume Discount Rate
SGCPB SUCPB	12	1/8	1/4	17	17			
	13	1/8	3/8	18	21			
	23	1/4	3/8	18	21			
	24	1/4	1/2	21	26			
	34	3/8	1/2	21	26			
	36	3/8	3/4	24	32			
46	1/2	3/4	24	32				

Ⓜ For orders larger than indicated quantity, please check with WOS.

Thread Conversion Fittings

L-Shaped / T-Shaped



RoHS10

Type	Material	Surface Treatment	Max. Operating Pressure
L-Shaped	Steel for General Structure	Electroless Nickel Plating	20.6MPa
APBLM	APBTM	SUS304	-
APBLS	APBTS	Aluminum Alloy	-
APBLA	APBTA	-	1MPa

Thread JIS B 0203 R (PT)
JIS B 0202 G (PF): ISO 228-1 Interchangeable
ANSI/ASME B.1.20.1-1983 (NPT)

■ **L-Shaped**

Part Number	Thread Shape①	No.	T (PT) G (PF) N (NPT)	Thread Shape②	No.	T (PT) G (PF) N (NPT)	L	A	B	E	F	Unit Price		
												APBLM	APBLS	APBLA
APBLM (SS400) APBLS (SUS304) APBLA (A5052)	T (PT) G (PF) N (NPT)	1	1/8	-	M5	-	25	25 (30)	25 (30)	12.5	12.5 (15)			
					1	1/8	25	25 (30)	25 (30)	12.5	12.5 (15)			
		2	1/4	-	M5	-	30	30	30	15	15			
					1	1/8	30	30	30	15	15			
		2	1/4	-	2	1/4	35	35 (40)	35 (40)	17.5	17.5 (20)			
					3	3/8	40	40	40	20	20			
	3	3/8	-	T (PT) G (PF) N (NPT)	2	1/4	40	40	40	20	20			
					3	3/8	40	40	40	20	20			
					4	1/2	50	50	50	25	25			
					3	3/8	50	50	50	25	25			
	4	1/2	-	-	4	1/2	50	50	50	25	25			
					4	1/2	50	50	50	25	25			

Ⓜ Dimensions in () are applicable to SUS304.

■ **T-Shaped**

Part Number	Thread Shape①	No.	T (PT) G (PF) N (NPT)	Thread Shape②	No.	T (PT) G (PF) N (NPT)	Thread Shape③	No.	T (PT) G (PF) N (NPT)	L	A	B	E	F	Unit Price		
															APBTM	APBTS	APBTA
APBTM (SS400) APBTS (SUS304) APBTA (A5052)	T (PT) G (PF) N (NPT)	1	1/8	-	M5	-	-	M5	-	25	25 (30)	25 (30)	12.5	12.5 (15)			
					1	1/8	25	25 (30)	25 (30)	12.5	12.5 (15)						
		2	1/4	-	M5	-	30	30	30	15	15						
					1	1/8	30	30	30	15	15						
		2	1/4	-	2	1/4	35	35 (40)	35 (40)	17.5	17.5 (20)						
					3	3/8	40	40	40	20	20						
	3	3/8	-	T (PT) G (PF) N (NPT)	2	1/4	40	40	40	20	20						
					3	3/8	40	40	40	20	20						
					4	1/2	50	50	50	25	25						
					3	3/8	50	50	50	25	25						
	4	1/2	-	-	4	1/2	50	50	50	25	25						
					4	1/2	50	50	50	25	25						

Ⓜ Dimensions in () are applicable to SUS304.

Ordering Example: Part Number - Thread Shape① - Thread Shape② - Thread Shape③
APBLM - T1 - T2
APBTA - M5 - M5

ⓘ **Cautions**

- Not applicable to steam plumbing.
- Once fittings are used, the function of the thread coating resin is impaired. Thus, Wrap seal tape around fittings before use.

Ordering Example: Part Number
SGCEL25A
SGCPP20A