

# Low Pressure Screw Fittings

## Equal Dia.

Note that, for some of the types shown here, order might be unable to be received by the MISUMI Indonesia offices.

# MISUMI C-VALUE Low Pressure Screw Fittings

## Equal Dia.

Points of comparison between similar products ① JIS Standard Compliant, ② Thick, Heavyweight, High Strength, ③ RoHS Compliant

**90° Elbow**

Type	Material	Surface Treatment
SGPPE	FCMB270	Hot Zinc Plating
SUTPE	SCS13A	-
SUTPES	SCS14A	-

RoHS 10

\* For SUTPES, 32A-50A are not provided.

Part Number	Rc (PT)	SGPPE			SUTPE, SUTPES			SGPPE		SUTPE		SUTPES	
		(D)	L (A)	(D)	L (A)	Unit Price	Volume Discount Rate	Unit Price	Volume Discount Rate	Unit Price	Volume Discount Rate		
6A	1/8	15	17	24.5	18	19	28						
8A	1/4	19	19	28.5	22	19	30						
10A	3/8	24	23	35	26	23	36						
15A	1/2	28	27	41	30	27	42						
20A	3/4	34	32	49	36	32	50						
25A	1	43	38	59.5	44	38	60						
32A	1 1/4	51	46	71.5	53	46	72.5						
40A	1 1/2	57	48	76.5	60	48	78						
50A	2	70	57	92	73	57	93.5						

For orders larger than indicated quantity, please check with WOS.

**Male / Female Elbows**

Type	Material	Surface Treatment
SGPPEL	FCMB270	Hot Zinc Plating
SUTPEL	SCS13A	-

RoHS 10

Part Number	Rc (PT)	SGPPEL				SUTPEL				SGPPEL		SUTPEL	
		(D)	(L1)	(L2)	A	B	(D)	(L1)	(L2)	A	B	Unit Price	Volume Discount Rate
6A	1/8	19	23	36	17	26	14.5	22	33	17	26		
8A	1/4	22	26	42	19	30	19	24.3	39.5	19	30		
10A	3/8	27	31	48	23	35	23	29.8	46.5	23	35		
15A	1/2	31	38	56	27	40	27	35.8	53.5	27	40		
20A	3/4	36	45	66	32	47	33	43.3	63.5	32	47		
25A	1	45	55	76.5	38	54	41	52.5	74.5	38	54		
32A	1 1/4	55	67	89.5	46	62	50	64	87	46	62		
40A	1 1/2	62	72	99	48	68	56	68.5	96	48	68		
50A	2	75	87	116.5	57	79	69	83	113.5	57	79		

For orders larger than indicated quantity, please check with WOS.

**Tees**

Type	Material	Surface Treatment
SGPPT	FCMB270	Hot Zinc Plating
SUTPT	SCS13A	-

RoHS 10

Part Number	Rc (PT)	SGPPT			SUTPT			SGPPT		SUTPT	
		(D)	(L)	A	(D)	(L)	A	Unit Price	Volume Discount Rate	Unit Price	Volume Discount Rate
6A	1/8	16	25.5	17	18	28	19				
8A	1/4	20	29	19	22	30	19				
10A	3/8	24	35.5	23	26	36	23				
15A	1/2	28	42	27	30	42	27				
20A	3/4	34	50	32	36	50	32				
25A	1	43	59.5	38	44	60	38				
32A	1 1/4	51	71.5	46	53	72.5	46				
40A	1 1/2	57	76.5	48	60	78	48				
50A	2	70	92	57	73	93.5	57				

For orders larger than indicated quantity, please check with WOS.

**Hex Nipples**

Type	Material	Surface Treatment
SGPNR	FCMB270	Hot Zinc Plating
SUTNR	SCS13A	-
SUTNRS	SCS14A	-

RoHS 10

\* Shape of B Part: No.6A ~ 40A = Hex, 50A = Octagon

Part Number	R (PT)	B*	L		(l)		d		SGPNR		SUTNR		SUTNRS	
			SGPNR	SUTNR	SGPNR	SUTNR	SGPNR	SUTNR	SUTNRS	Unit Price	Volume Discount Rate	Unit Price	Volume Discount Rate	Unit Price
6A	1/8	14	32	32	11	11	5	5	5.0					
8A	1/4	17	34	34	12.5	13.5	7	7	6.8					
10A	3/8	21	36	36	13	13.5	9	9	9.0					
15A	1/2	26	43	42	16.5	18	13	13	13.2					
20A	3/4	32	48	47	18.5	19.5	18	16	15.8					
25A	1	38	52	52	20.5	20.5	24	22	21.7					
32A	1 1/4	46	56	56	22.5	22.5	32	30	30.1					
40A	1 1/2	54	60	60	23.5	23.5	37	35	-					
50A	2	63	66	66	25.5	25.5	48	47	-					

For orders larger than indicated quantity, please check with WOS.

Ordering Example Part Number SUTPE20A

Applicable Standards  
 Similar Parts: JIS B 2301, JIS B 2302, JIS B 0203 Compliant  
 C-VALUE Products: ISO 4144 Compliant, GB/T 7306 Equivalent

Fitting Material

Fitting Type	Steel	Stainless Steel
Low Pressure Screw Fittings	Casting: FCMB270 (Malleable Casting) or Equivalent * Customers who are particular about external appearance should note that surface is rough because of limitations in the manufacturing process.	Casting: SCS13A (SUS304 Equivalent) SCS14A (SUS316 Equivalent) or Equivalent
High Pressure Screw Fittings	S25C or Equivalent	SCS13A (SUS304 Equivalent)

Pressure, Temperature Standards

Fluid State (°C)	Max. Operating Pressure (Mpa)
Steam, Air, Gas, Oil: Up to 300°C	1.0
Steam, Air, Oil, Pulsating Water: Up to 200°C	1.4
Static Flow Water: Up to 120°C	2.0

\* Pulsating Water is a stream of water that is generated under steady operating conditions and variation of pressure and flow rate occurs in cycles.  
 \* Static Flow Water is a non-pulsating stream of water.

Points of comparison between similar products ① ISO Standard Equivalent, ② Thin, Lightweight, ③ Not RoHS Compliant

For similar parts P.1273

**90° Elbow**

Type	Material
C-SUTPE	SCS13A

Part Number	Rc (PT)	(D)	L	(A)	Unit Price	Volume Discount Rate
					1 - 9 pc(s)	10 - 29 pcs
6A	1/8	15	17	24.5		
8A	1/4	18.5	19	28.5		
10A	3/8	22	23	34		
15A	1/2	26.5	27	40.5		
20A	3/4	32	32	48		
25A	1	41.5	38	60		

**Male / Female Elbows**

Type	Material
C-SUTPEL	SCS13A

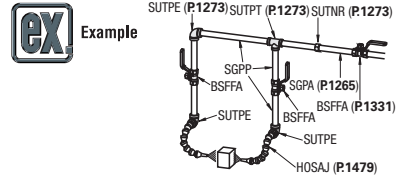
Part Number	Rc (PT)	(D)	(L1)	(L2)	A	B	Unit Price	Volume Discount Rate
							1 - 9 pc(s)	10 - 29 pcs
6A	1/8	15	21	33.5	17	26		
8A	1/4	18.5	24.5	36.0	19	27		
10A	3/8	22	30.5	40	23	29		
15A	1/2	26.5	36.5	48.5	27	35		
20A	3/4	32	44	56	32	40		
25A	1	41.5	53	67	38	46		

**Tees**

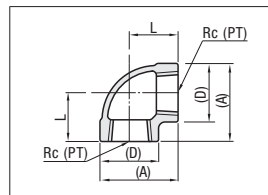
Type	Material
C-SUTPT	SCS13A

Part Number	Rc (PT)	(D)	(L)	A	Unit Price	Volume Discount Rate
					1 - 9 pc(s)	10 - 29 pcs
6A	1/8	15	24.5	17		
8A	1/4	18.5	28	19		
10A	3/8	22	34	23		
15A	1/2	26.5	40.5	27		
20A	3/4	32	48	32		
25A	1	41.5	59	38		

Ordering Example Part Number C-SUTPE20A

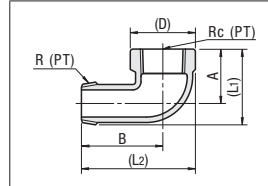


Minimum Thickness Dimension, Weight



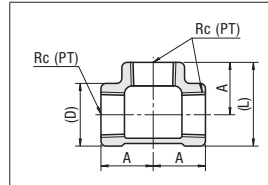
**90° Elbow** Thickness and weight are for reference, and should not be used as quality criteria.

No.	Rc (PT)	Minimum Thickness (mm)		Weight (g)	
		Similar Part	C-VALUE Products	Similar Part	C-VALUE Products
6A	1/8	2.8	2.5	55	25
8A	1/4	3.2	2.9	50	40
10A	3/8	3.2	2.9	75	45
15A	1/2	3.5	1.6	120	70
20A	3/4	3.5	1.7	185	110
25A	1	3.5	1.9	295	200



**Male/Female Elbows** Thickness and weight are for reference, and should not be used as quality criteria.

No.	R, Rc(PT)	Minimum Thickness (mm)		Weight (g)	
		Similar Part	C-VALUE Products	Similar Part	C-VALUE Products
6A	1/8	2.8	1.1	30	20
8A	1/4	3	1.5	40	30
10A	3/8	3	1.5	60	45
15A	1/2	3.5	2	85	70
20A	3/4	3.5	2	150	110
25A	1	3.5	2	240	190



**Tees** Thickness and weight are for reference, and should not be used as quality criteria.

No.	Rc (PT)	Minimum Thickness (mm)		Weight (g)	
		Similar Part	C-VALUE Products	Similar Part	C-VALUE Products
6A	1/8	3.2	2.5	90	25
8A	1/4	3.2	2.9	80	45
10A	3/8	3.2	2.9	105	75
15A	1/2	3.2	1.6	165	100
20A	3/4	3.2	1.7	240	165
25A	1	3.4	1.9	410	320

# Low Pressure Screw Fittings

## Thread Coated Type

■ Features: Male threads are coated. Provides immediate out of the box operation.

**Steel Pipe Fittings**  
Female/Male Elbows

Type	Material	Surface Treatment
SGCEL	FCMB270	Hot Zinc Plating
SUCEL	SCS13A	-

Ⓜ Allowable temperature: 150°C

**Steel Pipe Fittings**  
Plugs

Type	Material	Surface Treatment
SGCPP	FCMB270	Hot Zinc Plating
SUCPP	SCS13A	-

Ⓜ Allowable temperature: 150°C

**Steel Pipe Fittings**  
Round Nipples

Type	Material	Surface Treatment
SGCNP	SGP	Hot Zinc Plating
SUCNP	SUS304	-

Ⓜ Allowable temperature: 150°C

**Steel Pipe Fittings**  
Hex Nipples

Type	Material	Surface Treatment
SGCNR	FCMB270	Hot Zinc Plating
SUCNR	SCS13A	-

Ⓜ Allowable temperature: 150°C

**Steel Pipe Fittings**  
Bushings

Type	Material	Surface Treatment
SGCPB	FCMB270	Hot Zinc Plating
SUCPB	SCS13A	-

Ⓜ Allowable temperature: 150°C

Part Number	R Rc (PT)	SGCEL					SUCEL					SGCEL		SUCEL		
		(D)	(L1)	(L2)	A	B	(D)	(L1)	(L2)	A	B	Unit Price	Volume Discount Rate	Unit Price	Volume Discount Rate	
SGCEL SUCEL	6A	1/8	19	23	36	17	26	14.5	22	33	17	26				
	8A	1/4	22	26	42	19	30	21	26	41	19	30				
	10A	3/8	27	31	48	23	35	25	32	48	23	35				
	15A	1/2	31	38	56	27	40	29	38	55	27	40				
	20A	3/4	36	45	66	32	47	36	46	65	32	47				
25A	1	45	55	76.5	38	54	44	55	76	38	54					

Ⓜ For orders larger than indicated quantity, please check with WOS.

Part Number	R (PT)	Square Size H	t	L		SGCPP		SUCPP	
				SGCPP	SUCPP	Unit Price	Volume Discount Rate	Unit Price	Volume Discount Rate
SGCPP SUCPP	6A	1/8	7	7	16	16			
	8A	1/4	9	8	19	19			
	10A	3/8	12	9	21	21			
	15A	1/2	14	10	26	25			
	20A	3/4	17	11	29	28			
25A	1	19	12	31	31				

Ⓜ For orders larger than indicated quantity, please check with WOS.

Part Number	R (PT)	D	L	d		SGCNP		SUCNP	
				SGCNP	SUCNP	Unit Price	Volume Discount Rate	Unit Price	Volume Discount Rate
SGCNP SUCNP	6A	1/8	10.5	24	6.5	6.5			
	8A	1/4	13.8	26	8.7	9.7			
	10A	3/8	17.3	28	12.1	13.1			
	15A	1/2	21.7	34	15.8	15.5			
	20A	3/4	27.2	38	21.6	21.3			
25A	1	34	42	27.8	28.1				

Ⓜ For orders larger than indicated quantity, please check with WOS.

Part Number	R (PT)	B	L		d		SGCNR		SUCNR		
			SGCNR	SUCNR	SGCNR	SUCNR	SGCNR	SUCNR	Unit Price	Volume Discount Rate	Unit Price
SGCNR SUCNR	8A	1/4	17	34	34	12.5	12	7	7		
	10A	3/8	21	36	36	13	13	9	9		
	15A	1/2	26	43	42	16.5	16	13	13		
	20A	3/4	32	48	47	18.5	18	18	16		
	25A	1	38	52	52	20	20	24	22		

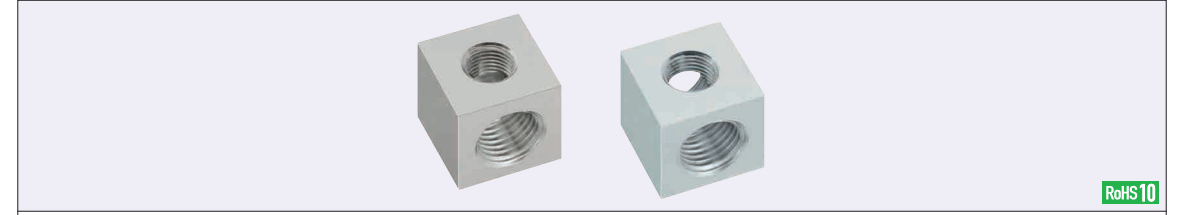
Ⓜ For orders larger than indicated quantity, please check with WOS.

Part Number	Rc (PT)	R (PT)	L	B	SGCPB		SUCPB	
					SGCPB	SUCPB	Unit Price	Volume Discount Rate
SGCPB SUCPB	12	1/8	1/4	17	17			
	13	1/8	3/8	18	21			
	23	1/4	3/8	18	21			
	24	1/4	1/2	21	26			
	34	3/8	1/2	21	26			
	36	3/8	3/4	24	32			
46	1/2	3/4	24	32				

Ⓜ For orders larger than indicated quantity, please check with WOS.

# Thread Conversion Fittings

## L-Shaped / T-Shaped



RoHS10

Type	Material	Surface Treatment	Max. Operating Pressure
L-Shaped	Steel for General Structure	Electroless Nickel Plating	20.6MPa
APBLM	APBTM	-	-
APBLS	APBTS	-	-
APBLA	APBTA	-	1MPa

Thread JIS B 0203 R (PT)  
JIS B 0202 G (PF): ISO 228-1 Interchangeable  
ANSI/ASME B.1.20.1-1983 (NPT)

**L-Shaped**

Part Number	Thread Shape①	No.	T (PT) G (PF) N (NPT)	Thread Shape②	No.	T (PT) G (PF) N (NPT)	L	A	B	E	F	Unit Price		
												APBLM	APBLS	APBLA
APBLM (SS400) APBLS (SUS304) APBLA (A5052)	T (PT) G (PF) N (NPT)	1	1/8	-	M5	-	25	25 (30)	25 (30)	12.5	12.5 (15)			
					1	1/8	25	25 (30)	25 (30)	12.5	12.5 (15)			
		2	1/4	-	M5	-	30	30	30	15	15			
					1	1/8	30	30	30	15	15			
		2	1/4	-	2	1/4	35	35 (40)	35 (40)	17.5	17.5 (20)			
					3	3/8	40	40	40	20	20			
	3	3/8	-	T (PT) G (PF) N (NPT)	2	1/4	40	40	40	20	20			
					3	3/8	40	40	40	20	20			
					4	1/2	50	50	50	25	25			
					3	3/8	50	50	50	25	25			
	4	1/2	-	-	4	1/2	50	50	50	25	25			
					4	1/2	50	50	50	25	25			

Ⓜ Dimensions in ( ) are applicable to SUS304.

**T-Shaped**

Part Number	Thread Shape①	No.	T (PT) G (PF) N (NPT)	Thread Shape②	No.	T (PT) G (PF) N (NPT)	Thread Shape③	No.	T (PT) G (PF) N (NPT)	L	A	B	E	F	Unit Price						
															APBTM	APBTS	APBTA				
APBTM (SS400) APBTS (SUS304) APBTA (A5052)	T (PT) G (PF) N (NPT)	1	1/8	-	1	1/8	T (PT) G (PF) N (NPT)	M5	-	1	1/8	25	25 (30)	25 (30)	12.5	12.5 (15)					
										1	1/8	30	30	30	15	15					
					2	1/4		-	M5	-	30	30	30	15	15						
									1	1/8	30	30	30	15	15						
					2	1/4		-	2	1/4	35	35 (40)	35 (40)	17.5	17.5 (20)						
									3	3/8	40	40	40	20	20						
		3	3/8	-	T (PT) G (PF) N (NPT)	2	1/4	-	T (PT) G (PF) N (NPT)	M5	-	1	1/8	40	40	40	20	20			
												2	1/4	40	40	40	20	20			
												2	1/4	40	40	40	20	20			
												2	1/4	40	40	40	20	20			
												3	3/8	40	40	40	20	20			
												3	3/8	40	40	40	20	20			
	4	1/2	-	-	2	1/4	-	-	-	-	2	1/4	50	50	50	25	25				
											3	3/8	50	50	50	25	25				
											3	3/8	50	50	50	25	25				
											3	3/8	50	50	50	25	25				
											4	1/2	50	50	50	25	25				
											4	1/2	50	50	50	25	25				

Ⓜ Dimensions in ( ) are applicable to SUS304.

Ordering Example: Part Number - Thread Shape① - Thread Shape② - Thread Shape③  
APBLM - T1 - T2  
APBTA - M5 - M5

- Cautions**
- Not applicable to steam plumbing.
  - Once fittings are used, the function of the thread coating resin is impaired. Thus, Wrap seal tape around fittings before use.