

Silicone Hoses

Standard / Vacuum

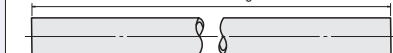
Silicone Hoses



Types	Type			Main Material	Reinforcement	Material		
	Hose only	One End Swaged	Both Ends Swaged			Swage Fittings		
Standard	HOSSW	HOSSWK	HOSSWR	Silicone Rubber	Polyester Yarn	Shape A, B Joint Nipples :SUS304 Fitting Cover :Aluminum	Shape C Joint Nipples :SUS316L Fitting Cover :SUS304	
Vacuum	SNHT	SNHTK	SNHTR	Silicone Rubber	Polyester Yarn + SUS316 Coil		Joint Nipples :SUS316L Fitting Cover :SUS304	

The products are lined with Green Color.

Hose Hose Length



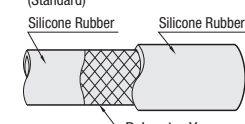
One End Swaged Hose Length (Swage Fitting Included)



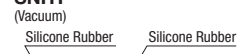
Both Ends Swaged Hose Length (Swage Fitting Included)



Structure



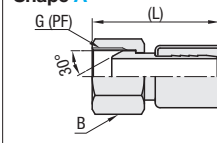
HOSSW (Standard)
Silicone Rubber
Polyester Yarn



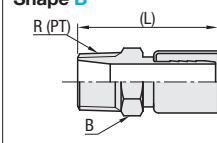
SNHT (Vacuum)
Silicone Rubber
SUS316
Polyester Yarn
Silicone Rubber

Swage Fitting Shapes

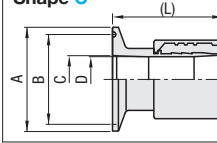
Shape A



Shape B



Shape C



Fluoro-resin Hoses

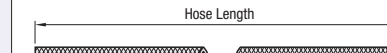
High-Flex / Antistatic

Fluoro-resin Hoses High Flex



Type	Type			Material		
	Hose only	One End Swaged	Both Ends Swaged	Hose Interior	Reinforcement	Hose Exterior
HOJFR	HOJFRK	HOJFRR	HOJSR	Fluoro-resin	Polyester Yarn	Urethane Type Elastomer
				Fluoro-resin	SUS Spring Wire	SUS3A04

Hose Length



Hose Length (Swage Fitting Included)



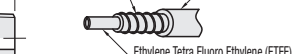
Structure



HOJFR
Reinforcement Yarn
Urethane Type Elastomer



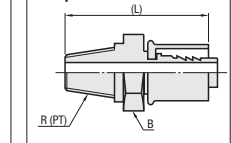
HOJSR
SUS Spring Wire
Urethane Type Elastomer



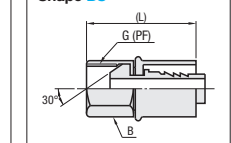
Ethylene Tetra Fluoro Ethylene (ETFE)

Swage Fitting Shapes

Shape AS



Shape BS



Hose Specifications

Hose Nominal I.D. (mm)	Hose I.D. (mm)	Hose O.D. (mm)	Reinforcement				Spring Type		
			Min. Bending Radius (mm)	Operating Pressure (MPa)		Min. Bending Radius (mm)	Operating Pressure (MPa)		
				20°C	70°C		20°C	70°C	
9	9	15	63	0-1.0	0-0.5	-	-	-	
12	12	18	84			50	-0.1-0.5	-0.1-0.25	
15	15	22	105			60	-0.1-0.5	-0.1-0.25	
19	19	26	133	0-0.6	0-0.3	75	-0.1-0.4	-0.1-0.2	
25	25	33	175			100	-0.1-0.4	-0.1-0.2	

Swage Fittings Size List

Hose Nominal I.D.	R (PT)	Shape AS		Shape BS	
		B (Wrench Flats)	L	B (Wrench Flats)	L
9	3/8	19	44	22	40
12	1/2	22	51	27	46
19	3/4	27	64	32	58
25	1	35	75	38	70

Hose Specifications

No.	HOSSW		Thickness (mm)	Min. Bending Radius (mm)	Operating Pressure (MPa)	Operating Temp. Range (°C)
	I.D. (mm)	O.D. (mm)				
6	6.3	12.3	3	80	0-1.0	-30-150
9	9.5	16	3.25	100	0-1.0	
12	12.7	19.5	3.4	130	0-0.5	
19	19.0	28	4.5	180	0-0.5	
1S	25.4	35.5	5.05	220	0-0.5	
1.5S	38.1	50.5	6.2	310	0-0.5	
2S	50.8	64.5	6.85	550	0-0.3	

No.	SNHT		Thickness (mm)	Min. Bending Radius (mm)	Operating Pressure (MPa)	Operating Temperature Range (°C)
	I.D. (mm)	O.D. (mm)				
1S	25.4	35.5	5.05	180	-0.1-0.7	-30-150
1.5S	38.1	50.5	6.2	280	-0.1-0.7	
2S	50.8	64.5	6.85	390	-0.1-0.3	

Swage Fitting Shapes

Hose Nominal I.D.	R (PT)	Shape A		Shape B	
		B (Wrench Flats)	L	B (Wrench Flats)	L
6	1/4	17	37	14	43
9	3/8	19	43	17	47
12	1/2	24	49	22	53
19	3/4	30	59	27	65

Hose Nominal I.D.	Shape C				
	A	B	C	D	L
1S	50.5	43.5	23	22	56
1.5S	50.5	43.5	35.7	34	73
2S	64	56.5	47.8	46	75

Part Number	Type	Hose Nominal I.D.	Hose Length 0.1m Increment	L Left End Swaged Shape	R Right End Swaged Shape	Unit Price	
						Hose Unit Price/m	Swaging Charge
Standard Type HOSSW HOSSWK HOSSWR	(Hose only) (One End Swaged) (Both Ends Swaged)	6	0.3-20.0	LA	RA		
		9					
		12	0.3-10.0	LB	RB		
		19					
		1S	0.6-5.0	LC	RC		
		1.5S					
2S							
Vacuum SNHT SNHTK SNHTR	(Hose only) (One End Swaged) (Both Ends Swaged)	1S	0.6-5.0	LC	RC		
		1.5S					
		2S					

For One End Swaged, specify LA, LB, or LC.

Part Number	Hose Length	Shape L	Shape R
HOSSW6	1.5		
HOSSWK1.5S	2.0	LC	
SNHTR2S	1.0	LC	RC

- Feature of HOSSW (Standard)**
 - The spirally knitted pressure-resistant reinforcement wire prevents burst due to wire failure near couplings.
 - Semi-transparent wall enabling the transfer of materials to be observed.
 - Excellent in cold resistance and heat resistance.
 - Conforms to Food Sanitation Laws.
 - FDA compliant.

- Feature of SNHT (Vacuum)**
 - Provides high level of deformation resistance to enable force-feed and vacuum.
 - Semi-transparent wall enabling the transfer of materials to be observed.
 - Excellent in cold resistance and heat resistance.
 - Conforms to Food Sanitation Laws.
 - FDA compliant.

- CAUTION**
 - Avoid use with non-polar organic solvents (benzene, toluene, hexane etc.), halogenated hydrocarbon (methylene chloride, trichloroethane etc.), strongly acid condensed agent, strong alkali solution, mineral oil, steam (long-time use) or animal and vegetable oils over 70°C.
 - Cleanse inside the hose before using with drinking water or food.
 - For food plumbing, metal shape C is recommended for its safety in sanitary respect.
 - At steam cleansing, apply saturated steam at 0.2MPa or lower for a short time.
 - Do not soak hoses or fittings in drinking water, food or fluids. Fluid may remain behind the fitting and unwanted bacteria may adhere to it.

Fluoro-resin Hoses Antistatic



Type	Material		
	Hose only	Hose Interior	Hose Exterior
HOEFR	Fluoro-resin (4 fluoride)	Polyester Yarn	Polyurethane Resin

Hose Length



Structure



Conductive Band
Polyurethane Resin
Polyurethane Resin
Fluoro-resin (4 fluoride)
Polyester Yarn

Hose Specifications

Type	Hose Nominal I.D.	Hose Length 0.1m Increment	Unit Price	
			Hose Unit Price/m	Swaging Charge
HOEFR	12	0.5-20.0		
	15			
	19			
	25			

Hose Nominal I.D. (mm)	Hose I.D. (mm)	Hose O.D. (mm)	Reinforcement		
			Min. Bending Radius (mm)	Operating Pressure (MPa)	
				23°C	70°C
12	12	18	85	0-1.0	0-0.5
15	15	22	105		
19	19	26	135		
25	25	33	175	0-0.6	0-0.3

Part Number	Hose Length	Shape L	Shape R
HOJFRK19	5.0	LBS	
HOJFRR9	2.0	LAS	RBS
HOEFR12	10.0		

- Features**
 - Prevents trouble caused by electrostatic discharge.
 - Conforms to Food Sanitation Laws.
 - Smooth interior surface helps transfer of high viscosity fluids efficiently, and makes cleaning easy with little residual fluids.

Applicable Fluids	Water, Air, Oil, Solvent, Powder
Operating Temperature Range	-5-70°C (No Freezing)
Max. Operating Pressure	See Hose Specifications Table