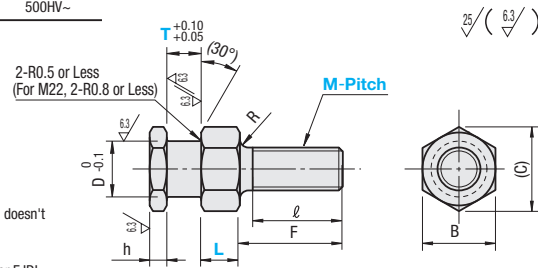


# Floating Joints - Quick Connection Type

[Threaded] Cylinder Connector - Configurable Type / Circular Type

## Configurable Type

Type	Material	Surface Treatment	Hardness
FJDL	S45C Equivalent	Salt-bath Nitriding	500HV~



- ⚠ Salt-bath Nitriding may cause uneven color, which doesn't affect mechanical function.
- ⚠ For details of Salt-bath Nitriding, see P.1907.
- ⚠ No Salt-bath Nitriding Treatment on F Dimension for FJDL.

RoHS10

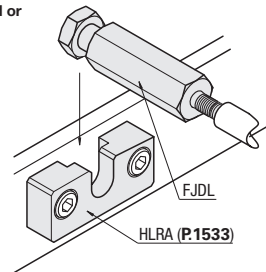
Part Number Type	M-Pitch	T Selection										L 1mm Increment	h	D	F	ℓ	B	(C)	R	Unit Price
		3	4	5	6	8	9	10	12	15	20									
FJDL	3-0.5	3	4									3-15	3	4	8	6	6	6.9	1.5	
	4-0.7	3	4	5	6	8						3-20		6	13	11	8	9.2		
	5-0.8	3	4	5	6	8	9	10				3-25	4	7	19	17	10	11.5	2	
	6-1.0	4	5	6	8							4-30		10	20	18	14	16.2		
	8-1.25		5	6	8			12				4-40	5	13	24	21	17	19.6	2.5	
	10-1.5		6	8	9	10	12					4-50		21	40	37	26	30		
	16-2.0							12	20			8-80	6	25	50	46	30	34.6		
	20-2.5							15	20	10-100	27	60		56	32	36.9				
22-2.5							12	15	20	10-100										

⚠ For compatible holders, see HLRAF (P1533).

Ordering Example: Part Number - T - L  
FJDL10-1.5 - 8 - 20

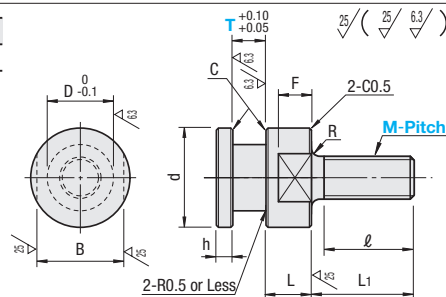


It is possible to extend or adjust the join length.



## Circular Type

Type	Material	Surface Treatment	Hardness
FJCLM	S45C Equivalent	Salt-bath Nitriding	500HV~



- ⚠ Salt-bath Nitriding may cause uneven color, which doesn't affect mechanical function.
- ⚠ For details of Salt-bath Nitriding, P.1907.

RoHS10

Part Number Type	M-Pitch	T Selection										h	D	d	L	F	L1	ℓ	B	R	C	Unit Price	Applicable Holder	
		3	4	5	6	8	9	10	12	15	20												HLRB P1535	HLRB P1535
FJCLM	4-0.7	3	4									4	14	6	4	11	9	10	1.5	0.2	4	HLRB4	HLRB6	
	5-0.8	4	5	6								6	14	7	5	13	11	12				HLRB7	HLRB10	
	6-1.0	4	6									7	16	8	6	19	17	14	HLRB13	HLRB21				
	8-1.25		6	8								10	20	9	7	20	18	17	HLRB21	HLRB36				
	10-1.5			8								13	24	11	8	24	21	21	HLRB21	HLRB36				
	16-2.0							12				21	35	13	11	35	32	30	HLRB21	HLRB36				
	20-2.5								15			25	40	15	13	40	37	36	HLRB25	HLRB36				

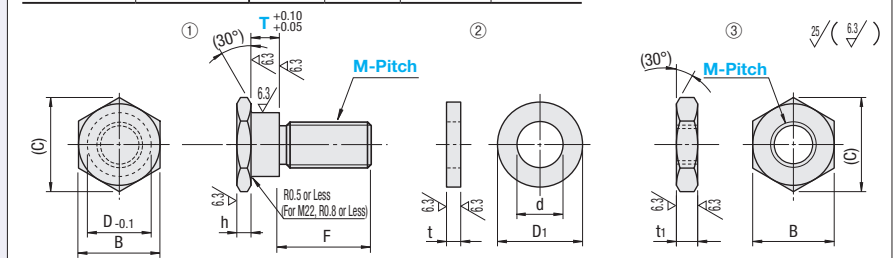
Ordering Example: Part Number - T  
FJCLM4-0.7 - 4

# Floating Joints - Quick Connection Type

[Threaded] Cylinder Connector - Separate Type / Bolt Mount Type

## Separate Type

Type		Components	Material	Surface Treatment	Hardness
F Fixed	F Configurable	① ②	S45C Equivalent	Salt-bath Nitriding	500HV~
FJTM	FJTMF	① ②			
FJNM	FJNMF	① ③			



- ⚠ No Salt-bath Nitriding Treatment on F Dimension for FJTMF and FJNMF.
- ⚠ For details of Salt-bath Nitriding, see P.1907.
- ⚠ Salt-bath Nitriding may cause uneven color, which doesn't affect mechanical function.

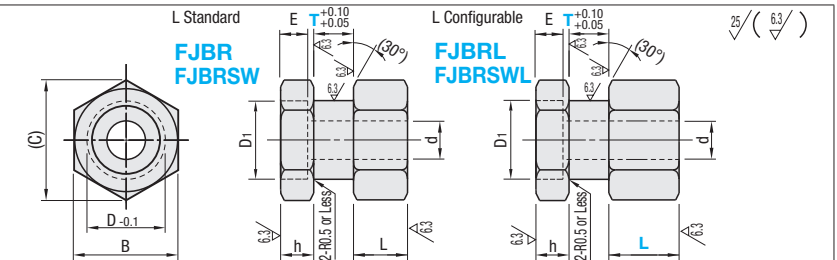
RoHS10

Part Number Type	M-Pitch	T Selection										h	D	B	(C)	t	t1	D1	d	
		F Fixed	F Configurable (1mm Increment)	3	4	5	6	8	9	10	12									15
F Fixed FJTM FJNM	3-0.5	3	4*									10	7-15	6	8	9.2	3	5	9	3.2
	4-0.7	3	4*									13	8-20	7	10	11.5		6	11	4.3
	5-0.8	3	4	6*					10			15	8-25	8	12	13.9	4	8	13	5.3
	6-1.0	4	6*						12			21	9-30	10	14	16.2		6	15	6.4
F Configurable FJTMF FJNMF	8-1.25	4	6	8*	9	12					23	11-40	13	17	19.6	5	8	18	8.4	
	10-1.5		8*	10							27	13-50	16	21	24.2			8	22	10.5
	16-2.0			12	15*						43	21-80	25	30	34.6	6	14	31	17	
	20-2.5			15*							48	24-100	32	36.9	35			21		
	22-2.5			15	20*						52	27-100								

Ordering Example: Part Number - T - F  
FJTM5-0.8 - 4  
FJNMF10-1.5 - 8 - 20

M-Pitch	Unit Price				Applicable Holder			
	F Fixed	F Configurable	HLRA P1533	HLRB P1535	HLRC P1534	HLRE P1536		
3-0.5			HLRA6	HLRB6	HLRC6	-		
4-0.7			HLRA7	HLRB7	HLRC7	HLRE7		
5-0.8			HLRA8	HLRB8	HLRC8	HLRE8		
6-1.0			HLRA10	HLRB10	HLRC10	HLRE10		
8-1.25			HLRA13	HLRB13	HLRC13	HLRE13		
10-1.5			HLRA16	HLRB16	HLRC16	HLRE16		
16-2.0			HLRA25	HLRB25	HLRC25	HLRE25		
20-2.5			HLRA25	HLRB25	HLRC25	HLRE25		
22-2.5			HLRA27	-	HLRC27	-		

## Bolt Mount Type



- ⚠ For L Configurable Type, surface treatment is not added to the end.
- ⚠ Salt-bath Nitriding may cause uneven color, which doesn't affect mechanical function.
- ⚠ For details of Salt-bath Nitriding, see P.1907.

L Standard	L Configurable	Material	Surface Treatment	Hardness
FJBR	FJBRL	S45C Equivalent	Salt-bath Nitriding	500HV~
FJBSW	FJBRSWL	SUS304	Nitriding Treatment	1000HV~

Part Number Type	No.	T Selection										L Fixed	L Configurable (1mm Increment)	h	D	B	(C)	D1	d	E	Unit Price			
		3	4	5	6	8	9	10	12	15	20										FJBR	FJBSW	FJBRL	FJBRSWL
L Fixed FJBR FJBSW	3	3	4	5	6	8	9	10	12		5	3-10	4	10	14	16.2	6.5	3.4	3.5					
	4	4	5	6	8	9	10	12	15		3-20	5	13	17	19.6	8	4.5	4.5						
	5	5	6	8	9	10	12	15			4-20	6	16	21	24.2	9.5	5.5	5.5						
L Configurable FJBRL FJBRSWL	6		5	6	8	9	10	12	15		5-20	8	18	23	26.6	11	6.6	6.5						
	8			5	6	8	9	10	12	15	6	4-20	10	21	26	30	14	9	8.6					
	10			8	9	10	12	15			5-20	12	25	30	34.6	17.5	11	10.8						

Ordering Example: Part Number - T - L  
FJBR6 - 8  
FJBRL10 - 12 - 14