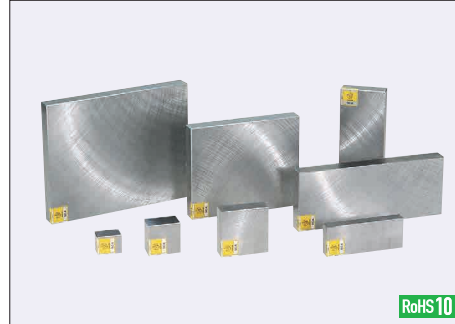
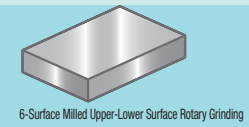
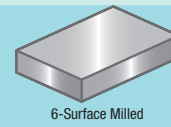


A Dimension Configurable Plates - S50C

Standard / Large



RoHS 10

Part Number	Finish Method	Size	Tolerance	A, B	~99mm	100-250	251~
SCA	6-Surface Milled Upper-Lower Surface Rotary Grinding	Standard			±0.2	±0.25	±0.4
SCG6F	6-Surface Milled	Large					
SCG	6-Surface Milled Upper-Lower Surface Rotary Grinding						

Material: S50C



Part Number - A - B - T
SCA - 100 - 100 - 8

Precision Standards (Max. Value)

Item	SCG6F	SCA, SCG
Thickness Parallelism (per 100mm)	0.05	0.012
Flatness (per 100mm)	T 5, 6	0.05
	T 8~15	0.07
	T16~25	0.05
	T28~	0.012
Perpendicularity of Datum Plane	0.015 or less per 100mm	
Circumference Chamfering	C0.5~C1.0	

(Ex.) For SCA-380-100-25

A Dimension x Area Unit Price = Price

Standard 6-Surface Milled Upper-Lower Surface Rotary Grinding

Part Number	A: 1mm Increment	T	B																							
			5, 6	8, 9	10	12, 13	15, 16	19, 20	22	25	28	30	34, 35	40	50											
SCA	25~ 50	25																								
	51~ 75																									
	76~100																									
	101~250																									
	30~ 50	40																								
	51~ 75																									
	76~100																									
	101~200																									
	201~500																									
	30~ 50	60																								
	51~ 75																									
	76~100																									
	101~200																									
	201~500																									
	30~ 50	80																								
	51~ 75																									
	76~100																									
	101~200																									
	201~500																									
	30~ 50	100																								
51~ 75																										
76~100																										
101~200																										
201~500																										
50~ 75	125																									
76~100																										
101~125																										
126~200																										
201~500																										
101~200	150																									
201~500																										
101~200																										
201~500	160																									
101~200	200																									
201~500																										
101~200																										
201~500	250																									
101~200	300																									
201~500																										
101~200																										
201~500																										

Large 6-Surface Milled

Part Number	A: 1mm Increment	T	B																									
			10	12	13	15	16	20	22	25	30																	
SCG6F	501~ 800	125																										
	501~ 800	150																										
	501~ 800	160																										
	501~ 800	200																										
	501~ 800	250																										
	501~ 800	300																										
	301~ 800	350																										
	801~1200																											
	351~ 800	400																										
	801~1200																											
	401~ 800	450																										
	801~1200																											
	451~ 800	500																										
	801~1200																											
	501~ 800	600																										
801~1200																												
601~ 800	800																											
801~1200																												

6-Surface Milled Upper-Lower Surface Rotary Grinding

Part Number	A: 1mm Increment	T	B																										
			10	12	13	15	16	20	22	25	30																		
SCG	501~ 800	125																											
	501~ 800	150																											
	501~ 800	160																											
	501~ 800	200																											
	501~ 800	250																											
	501~ 800	300																											
	301~ 800	350																											
	801~1200																												
	351~ 800	400																											
	801~1200																												
	401~ 800	450																											
	801~1200																												
	451~ 800	500																											
	801~1200																												
	501~ 800	600																											
801~1200																													
601~ 800	800																												
801~1200																													



Alterations Part Number - A - B - T -(BC, CNC, TC...etc.)
SCA - 320 - 200 - 20 - BC195-CNC

Alterations	Width (B Dimension)	Circumference Chamfering	Thickness	Thickness Tolerance	Corner Cut	
	Code	BC	CNC	TC	TKP	TKM
Spec.	Cuts B dimension. BC=1mm Increment Ordering Code BC195 SCA 26≤BC≤299 SCG(6F) 126≤BC≤799	Changes the circumference chamfering dimension. C0.5~C1.0→ C0.1 or Less Applicable to SCA and SCG only.	Cuts T dimension. TC=1mm Increment Ordering Code (Ex.) When T=18→TC18 7≤TC≤49 Applicable to SCA only.	Changes T dimension to positive tolerance. T±0.1→T+0.1 0	Changes T dimension to negative tolerance. T±0.1→T-0.1	Cuts any corners. 1≤ Corner Cut ≤10: 1mm Increment Applicable to SCA and SCG only. Ordering Code (Ex.)When the corners of A and D are cut by C5, ...CCA5-CCD5