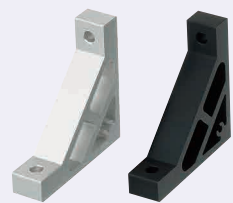


# Extruded Brackets - For 1 Slot

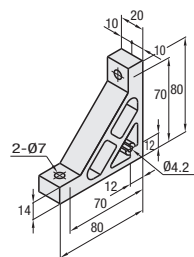
## For 6 Series (Slot Width 8mm) Aluminum Extrusions

■ Features: Numbers of screws are the same as HBLTS6. Extrusions can be connected more securely.

### Ultra Thick Brackets



**HBLUS6**  
**HBLUSB6**  
(Black Anodize)



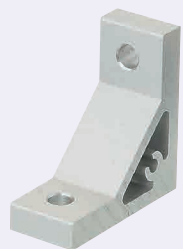
Type	Material	Surface Treatment
HBLUS6	AGN01SS-T5	Anodize
HBLUSB6	AGN01SS-T5	Black Anodize

Part Number Type	Mass (g)	Applicable Screw, T Nut				Allowable Load (N)	Unit Price 1~99 pc(s)	Volume Discount Rate 100~200
		Screw	Quantity	T Nut	Quantity			
<b>HBLUS6</b> <b>HBLUSB6*</b> (Black Anodize)	101	CBM6-20	2	HNTT6-6	2	1176		

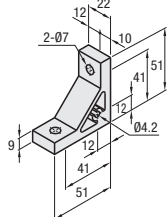
\* For repairing black anodizing, refer to P846.

■ Features: Hole positions are offset. Can be combined with plates of 3mm and 5mm thickness when using taps for mounting covers.

### Eccentric Brackets



**HBLTH6**

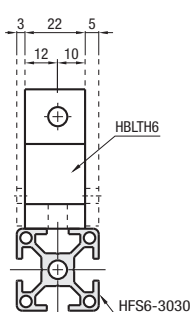


Material: A6N01SS-T5  
Surface Treatment: Anodize



Example

They can be combined with cover plates of thickness 3mm and 5mm.



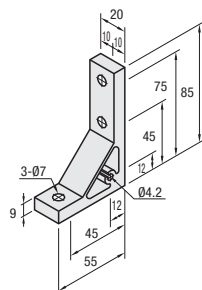
Part Number Type	Mass (g)	Applicable Screw, T Nut				Allowable Load (N)	Unit Price 1~99 pc(s)	Volume Discount Rate 100~200
		Screw	Quantity	T Nut	Quantity			
<b>HBLTH6</b>	44	CBM6-15	2	HNTT6-6	2	1176		

■ Features: Extruded Brackets with Unequal Sides. Effective when strength is required in narrow clearances between extrusions.

### Scalene Brackets



**HBLTF6**

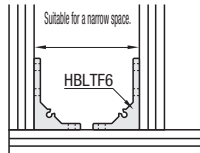


Material: A6N01SS-T5  
Surface Treatment: Anodize

Part Number Type	Mass (g)	Applicable Screw, T Nut				Allowable Load (N)	Unit Price 1~99 pc(s)	Volume Discount Rate 100~200
		Screw	Quantity	T Nut	Quantity			
<b>HBLTF6</b>	62	CBM6-15	3	HNTT6-6	3	1470		



Example



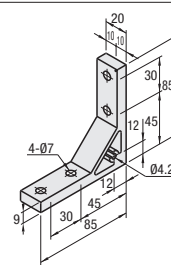
■ Features: Extruded Brackets with two mounting holes on one side can connect extrusions more securely.

### Thick Brackets



**HBLTSW6**

Material: A6N01SS-T5  
Surface Treatment: Anodize



Part Number Type	Mass (g)	Applicable Screw, T Nut				Allowable Load (N)	Unit Price 1~99 pc(s)	Volume Discount Rate 100~200
		Screw	Quantity	T Nut	Quantity			
<b>HBLTSW6</b>	76	CBM6-15	4	HNTT6-6	4	1764		

■ Features: Brackets with two mounting holes on one side can connect extrusions more securely.

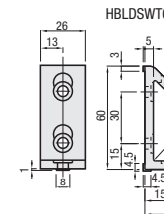
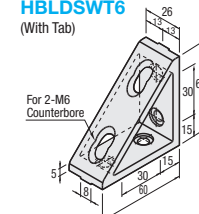
### Triangle Brackets



**HBLDSW6**  
(Without Tab)

Material: A6N01SS-T5  
Surface Treatment: Anodize

**HBLDSW6**  
(With Tab)

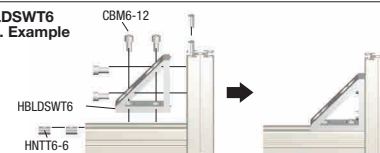


Part Number Type	Mass (g)	Applicable Screw, T Nut				Allowable Load (N)	Unit Price 1~99 pc(s)	Volume Discount Rate 100~200
		Screw	Quantity	T Nut	Quantity			
<b>HBLDSW6</b>	100	CBM6-12	4	HNTT6-6	4	1764		
<b>HBLDSW6</b>	110	CBM6-12	4	HNTT6-6	4	1764		



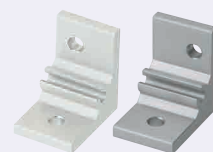
Example

■ HBLDSW6 App. Example



■ Features: Brackets to connect 30, 20 square Extrusions.

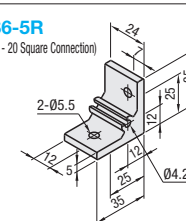
### Assembly Brackets for Different Extrusion Sizes



**HBLTS6-5L**  
(For 30 Square - 20 Square Connection)

Material: A6N01SS-T5  
Surface Treatment: Anodize

**HBLTS6-5R**  
(For 30 Square - 20 Square Connection)



Part Number Type	Mass (g)	Applicable Screw, T Nut				Allowable Load (N)	Unit Price 1~99 pc(s)	Volume Discount Rate 100~200
		Screw	Quantity	T Nut	Quantity			
<b>HBLTS6-5L</b>	26	CBM5-12	1	HNTT6-5	1	-		
CBM5-10		HNTT5-5						
CBM5-12		HNTT6-5						
CBM5-10		HNTT5-5						



Example

