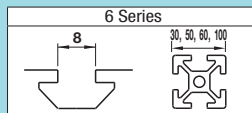


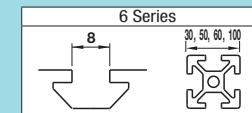
# Pre-Assembly Insertion Nuts/Stoppers for Aluminum Extrusions - Standard

For 6 Series (Slot Width 8mm)



# Pre-Assembly Insertion Nuts for Aluminum Extrusions with Temporary Holding Function

For 6 Series (Slot Width 8mm)

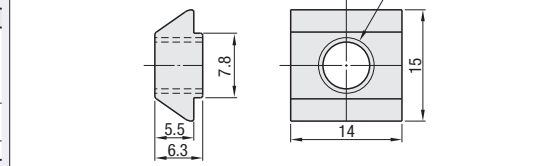


Tightening Torque P526

## Pre-Assembly Insertion Nuts



Type	Material	Surface Treatment
① HNTT6	S10C Equivalent	Trivalent Chromate
② PACK-HNTT6	S10C Equivalent	Trivalent Chromate
③ HNTTV6	Thread Locking Adhesive Type, S10C Equivalent	-
④ HNTTZ6	Thread Locking Resin Coating Type, S10C Equivalent	-
⑤ HNTTSS6*	SUS316 Equivalent (Sintered)	-
⑥ PACK-HNTTSS6*	SUS316 Equivalent (Sintered)	-
⑦ HNTTSS6	SUS303 Equivalent	-



**Example**  
**Pre-Assembly Insertion Nuts**  
 Nuts are pre-inserted in the aluminum extrusion.  
 HNTU  
 HNTUV  
 HNTUZ  
 SHNTU  
 HNTTBS  
 HNTT  
 HNTTV  
 HNTTZ  
 HNTTSS  
 HNTJ

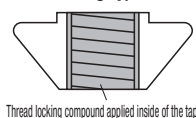
Part Number	M	Unit Price	Volume Discount Rate		
		1 ~ 499 pc(s).	500~749	750~999	1000~1500
HNTT6 (S10C Equivalent)	3 4 5 6				
HNTTV6 (Thread Locking, S10C Equivalent)	6				
HNTTZ6 (Thread Locking, S10C Equivalent)	6				
HNTTSS6 (SUS316 Equivalent, Sintered)	3 4 5 6				
HNTTSS6 (SUS303 Equivalent)	6				

Bulk Packages 100 pcs. per package

Part Number	M	Unit Price (1 ~ 10 packages)	
		Package Price	Price per Pkg.
PACK-HNTT6 (S10C Equivalent)	3 4 5 6		
PACK-HNTTSS6 (SUS316 Equivalent, Sintered)	3 4 5 6		

When ordering HNTT6 without specifying M, HNTT6-6 is selected automatically.

## Thread Locking Type



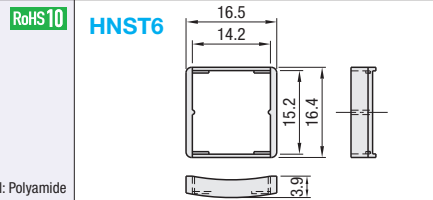
Nuts with thread locker applied on the inside of tap. Reduce loosening caused by vibration during transportation and operation of equipment.  
 Thread Locking Adhesive: A microencapsulated anaerobic adhesive prevents thread loosening. Note that it requires a hardening time (72 hours at room temperature 25°C). The adhesive property is lost once loosened.  
 Resin Coating: Resin is coated along the threads. Although the thread locking effect may be less than adhesive type, it can be used repeatedly without hardening time required.

## Effect of Thread Locker (Reference)

Loosening torque values are for reference. Difference may occur depending on the clearances between screws and nuts.

Without Thread Locker	Characteristics	Loosening Torque after Tightening (1st time)	Remarks
Without Thread Locker	-	8.2N · m	-
Thread Locking Adhesive Type	<ul style="list-style-type: none"> <li>Prevents loosening effectively.</li> <li>Thread locking properties are lost once loosened.</li> <li>Requires a hardening time for adhesives (72 hours at room temperature 25°C) after tightening.</li> </ul>	11.7N · m	Test Conditions: Measured value (HNTTV6-6) when a screw is loosened after drying for 72 hours at room temperature (25°C), after tightened at 11.7N · m.
Thread Locking Resin Coating Type	<ul style="list-style-type: none"> <li>Can be used repeatedly.</li> <li>(Thread locking effect decreases after repeated use.)</li> <li>Thread locking effect is immediately seen right after tightening.</li> </ul>	10.0N · m	Thread locking effect decreases after repeated use. Loosening Torque at 5 Repeats: 9.4N · m Measurement with HNTTZ6-6

## Pre-Assembly Insertion Stoppers

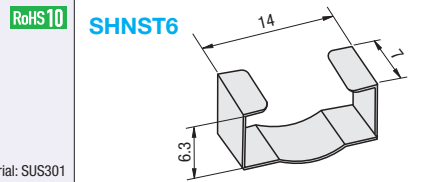


**Example**  
 - Hold Pre-Assembly Insertion Nuts temporarily in the extrusion.  
 - Nuts do not fall off.

Part Number	Applicable Pre-Assembly Insertion Nut	Color	Unit Price
			1 ~ 1500 pc(s).
HNST6	HNTT6 HNTTV6 HNTTZ6 HNTTSS6 HNTTSS6	Black	

Material: Polyamide

## Pre-Assembly Insertion Metal Stoppers



**Example**  
 HNTLSN(P625)  
 SHNST  
 HTDN(P625)

Part Number	Applicable Pre-Assembly Insertion Nut	Unit Price
		1 ~ 1500 pc(s).
SHNST6	HNTT6 HNTTV6 HNTTZ6 HNTTSS6 HNTTSS6	

Material: SUS301

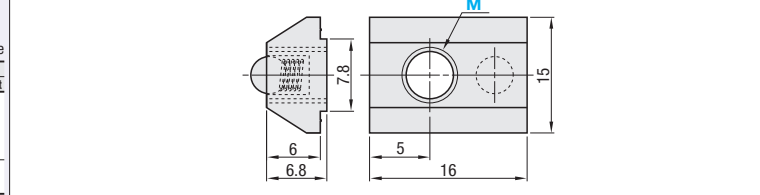
\*Can also be used with Pre-Assembly Insertion Screws.

Tightening Torque P526

## Pre-Assembly Insertion Spring Nuts



Type	Main Body	Ball	Spring	Surface Treatment
① HNTU6	S10C Equivalent	SUS304	SWP-A	Trivalent Chromate
② PACK-HNTU6	S10C Equivalent	SUS304	SWP-A	Trivalent Chromate
③ HNTUV6	Thread Locking Adhesive Type, S10C Equivalent	-	-	-
④ HNTUZ6	Thread Locking Resin Coating Type, S10C Equivalent	-	-	-
⑤ SHNTU6*	SUS304 Equivalent (Sintered)	SUS304	SUS304-WP8	-
⑥ PACK-SHNTU6*	SUS304 Equivalent (Sintered)	SUS304	SUS304-WP8	-



Part Number	M	Unit Price	Volume Discount Rate		
		1 ~ 499 pc(s).	500~749	750~999	1000~1500
HNTU6 (S10C Equivalent)	3 4 5 6				
HNTUV6 (Thread Locking, S10C Equivalent)	6				
HNTUZ6 (Thread Locking, S10C Equivalent)	6				
SHNTU6 (SUS304 Equivalent)	3 4 5 6				

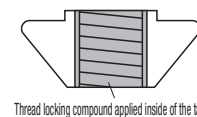
Bulk Packages 100 pcs. per package

Part Number	M	Unit Price (1 ~ 10 packages)	
		Package Price	Price per Pkg.
PACK-HNTU6 (S10C Equivalent)	3 4 5 6		
PACK-SHNTU6 (SUS304 Equivalent)	3 4 5 6		

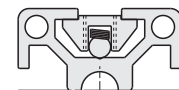


**Example**  
 - Does not fall even if the extrusion is placed vertically.  
 Built-in spring prevents slips.  
 Moves easily in the slot when pressed slightly by hand.

## Thread Locking Type



Nuts with thread locker applied on the inside of tap. Reduce loosening caused by vibration during transportation and operation of equipment.  
 Thread Locking Adhesive: A microencapsulated anaerobic adhesive prevents thread loosening. Note that it requires a hardening time (72 hours at room temperature 25°C). The adhesive property is lost once loosened.  
 Resin Coating: Resin is coated along the threads. Although the thread locking effect may be less than adhesive type, it can be used repeatedly without hardening time required.



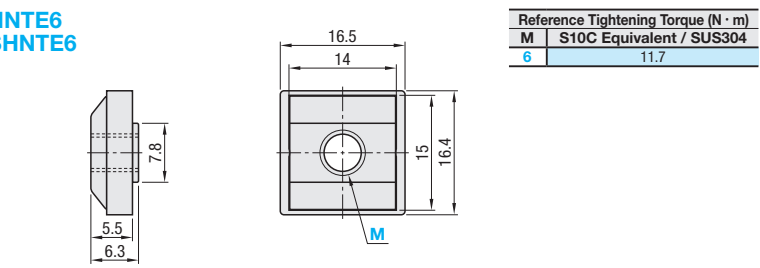
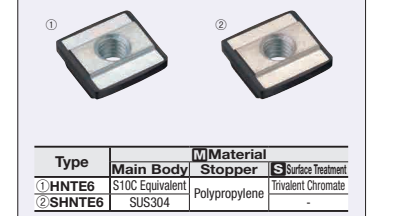
## Effect of Thread Locker (Reference)

Loosening torque values are for reference. Difference may occur depending on the clearances between screws and nuts.

Without Thread Locker	Characteristics	Loosening Torque after Tightening (1st time)	Remarks
Without Thread Locker	-	8.2N · m	-
Thread Locking Adhesive Type	<ul style="list-style-type: none"> <li>Prevents loosening effectively.</li> <li>Thread locking properties are lost once loosened.</li> <li>Requires a hardening time for adhesives (72 hours at room temperature 25°C) after tightening.</li> </ul>	11.7N · m	Test Conditions: Measured value (HNTTV6-6) when a screw is loosened after drying for 72 hours at room temperature (25°C), after tightened at 11.7N · m.
Thread Locking Resin Coating Type	<ul style="list-style-type: none"> <li>Can be used repeatedly.</li> <li>(Thread locking effect decreases after repeated use.)</li> <li>Thread locking effect is immediately seen right after tightening.</li> </ul>	10.0N · m	Thread locking effect decreases after repeated use. Loosening Torque at 5 Repeats: 9.4N · m Measurement with HNTTZ6-6

## Stopper Integrated Nuts

## HNTE6 SHNTE6



Part Number	M	Unit Price	Volume Discount Rate		
		1 ~ 499 pc(s).	500~749	750~999	1000~1500
HNTE6	3 4 5 6				
SHNTE6	3 4 5 6				



**Example**  
 HNTU6-6  
 HFS6-3030

Integrated Pre-Assembly Insertion Nuts and Stoppers.

The nuts do not slip off even if inserted into the vertically-placed extrusions.