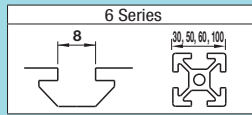
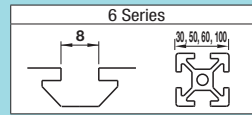


Post-Assembly Insertion Nuts for Aluminum Extrusions with Temporary Holding Function For 6 Series (Slot Width 8mm)



Note that, for some of the types shown here, order might be unable to be received by the MISUMI Malaysia, Indonesia and/or India offices.

Post-Assembly Insertion Nuts for Aluminum Extrusions - Others For 6 Series (Slot Width 8mm)



Tightening Torque \geq P.526

Post-Assembly Insertion Spring Nuts

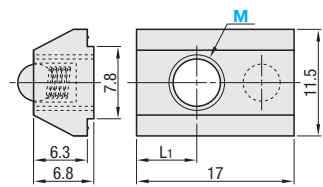
RoHS10



* Electrically conductive

Type	Material				Surface Treatment
	Main Body	Ball	Spring		
① HNTAP6	S10C Equivalent	SUS304	SWP-A	Trivalent Chromate	
② PACK-HNTAP6	S10C Equivalent	SUS304	SWP-A	Trivalent Chromate	
③ HNTAP6	S10C Equivalent	SUS304	SWP-A	Trivalent Chromate	
④ SHNTAP6*	SUS316 Equivalent (Sintered)	SUS304	SUS304-WP8	-	
⑤ PACK-SHNTAP6*	SUS316 Equivalent (Sintered)	SUS304	SUS304-WP8	-	

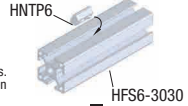
HNTAP6 (S10C Equivalent)
PACK-HNTAP6 (S10C Equivalent, 100/pkg.)
HNTAP6V (Thread Locking Adhesive Type, S10C Equivalent)
HNTAP6Z (Thread Locking Resin Coating Type, S10C Equivalent)
PACK-SHNTAP6 (SUS316 Equivalent, Sintered, Bulk Packages)
SHNTAP6 (SUS316 Equivalent, Sintered)



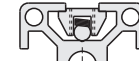
Reference Tightening Torque (N·m)	
M	S10C Equivalent / SUS316 Equivalent (Sintered)
6	11.7



Example



Built-in spring prevents slips. Moves easily in the slot when pressed slightly by hand.



* Does not fall even if the extrusion is placed vertically.

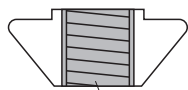
Part Number	M	L1	Unit Price				Volume Discount Rate		
			1 ~ 499 pc(s).				500~749	750~999	1000~1500
HNTAP6 (S10C Equivalent)	3 4 5 6	6							
HNTAP6V (Thread Locking, S10C Equivalent)	6								
HNTAP6Z (Thread Locking, S10C Equivalent)	6								
SHNTAP6 (SUS316 Equivalent, Sintered)	3 4 5 6	6.5							

Bulk Packages

Part Number	M	L1	Unit Price (1 ~ 10 packages)	
			Package Price	Price per Pkg.
PACK-HNTAP6 (S10C Equivalent)	3 4 5 6	6		
PACK-SHNTAP6 (SUS316 Equivalent, Sintered)	3 4 5 6	6.5		

100 pcs. per package

Thread Locking Type



Thread locking compound applied inside of the tap.

Nuts with thread locker applied on the inside of tap. Reduce loosening caused by vibration during transportation and operation of equipment.
 Thread Locking Adhesive: A microencapsulated anaerobic adhesive prevents thread loosening. Note that it requires a hardening time (72 hours at room temperature 25°C). The adhesive property is lost once loosened.
 Resin Coating : Resin is coated along the threads. Although the thread locking effect may be less than adhesive type, it can be used repeatedly without hardening time required.

Effect of Thread Locker (Reference)

Loosening torque values are for reference. Difference may occur depending on the clearances between screws and nuts.

	Characteristics	Loosening Torque after Tightening (1st time)	Remarks
Without Thread Locker	-	8.2N·m	-
Thread Locking Adhesive Type	<ul style="list-style-type: none"> Prevents loosening effectively. Thread locking properties are lost once loosened. Requires a hardening time for adhesives (72 hours at room temperature 25°C) after tightening. 	11.7N·m	Test Conditions: Measured value (HNTAP6-6) when a screw is loosened after drying for 72 hours at room temperature (25 °C), after tightened at 11.7N·m.
Thread Locking Resin Coating Type	<ul style="list-style-type: none"> Can be used repeatedly. (Thread locking effect decreases after repeated use.) Thread locking effect is immediately seen right after tightening. 	9.4N·m	Thread locking effect decreases after repeated use. Loosening Torque at 5 Repeats: 8.7N·m Measurement with HNTAP6-6

Post-Assembly Insertion Nuts with Leaf Springs

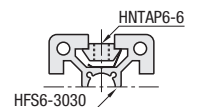
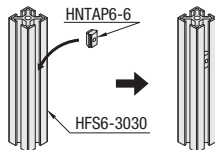
RoHS10

HNTAJ6
SHNTAJ6

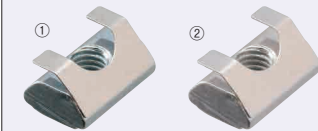
Reference Tightening Torque (N·m)	
M	S10C Equivalent / SUS304
6	11.7



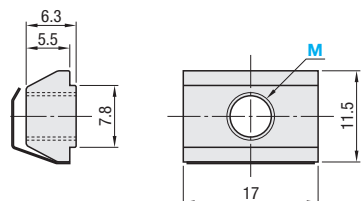
Example



Welded Leaf Springs prevent the nuts from slipping off even if inserted into the vertically-placed extrusions.



Type	Material				Surface Treatment
	Main Body	Wing Part			
① HNTAJ6	S10C Equivalent	SUS304	Trivalent Chromate	-	
② SHNTAJ6	SUS304	-	-	-	



Part Number	M	Unit Price				Volume Discount Rate		
		1 ~ 499 pc(s).				500~749	750~999	1000~1500
HNTAJ6	3 4 5 6							
SHNTAJ6	3 4 5 6							

Ordering Example Part Number - M
 HNTAJ6 - 6

Tightening Torque \geq P.526

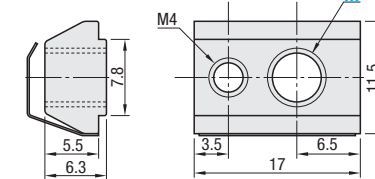
Post-Assembly Insertion Lock Nuts with Leaf Springs

RoHS10

HNTRP6



Part	Material	Surface Treatment
Main Body	S10C Equivalent	Trivalent Chromate
Wing Part	SUS304	-



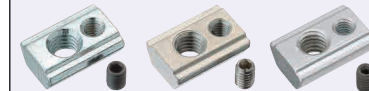
Reference Tightening Torque (N·m)	
M	S10C Equivalent
6	11.7

Part Number	M	Accessory	Unit Price	Volume Discount Rate		
			1 ~ 499 pc(s).	500~749	750~999	1000~1500
HNTRP6	6	M4x4 Set Screw for Locking 1 pc.				

Post-Assembly Insertion Lock Nuts

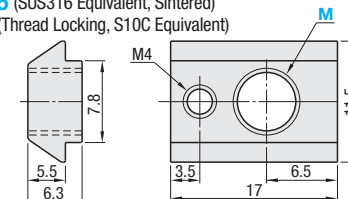
RoHS10

HNTR6 (S10C Equivalent)
HNTRS6 (SUS316 Equivalent, Sintered)
HNTRZ6 (Thread Locking, S10C Equivalent)



* Electrically conductive

Type	Material	Surface Treatment
HNTR6, HNTRZ6	S10C Equivalent	Trivalent Chromate
HNTRS6*	SUS316 Equivalent (Sintered)	-



Reference Tightening Torque (N·m)	
M	S10C Equivalent / SUS316 Equivalent (Sintered)
6	11.7

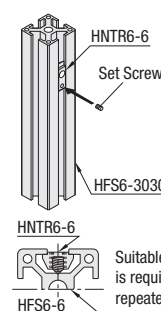
Part Number	M	Accessory	Unit Price	Volume Discount Rate		
			1 ~ 499 pc(s).	500~749	750~999	1000~1500
HNTR6 (S10C Equivalent)	3 4 5 6	M4x6 Set Screw for Locking 1 pc.				
HNTRS6 (SUS316 Equivalent, Sintered)	6					
HNTRZ6 (Thread Locking, S10C Equivalent)	6					

Ordering Example Part Number - M
 HNTR6 - 6



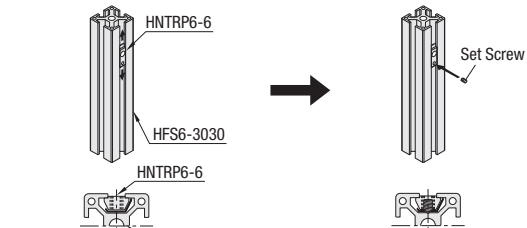
Example

Post-Assembly Insertion Lock Nut (HNTR)



The nut can be fixed in place by itself by tightening the included set screw.

Post-Assembly Insertion Lock Nut with Leaf Springs (HNTRP)



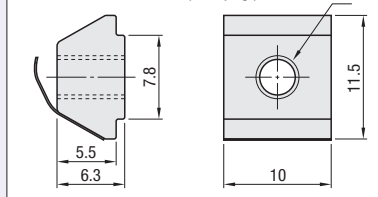
Welded Leaf Springs prevents nuts from slipping off even if inserted into the vertically-oriented extrusions, leading to easy locating.

Also, the nut can be fixed in place by tightening the included set screw.

Post-Assembly Insertion Short Nuts

HNTAJ6
PACK-HNTAJ6 (100/pkg.)

Part	Material	Surface Treatment
Main Body	S10C Equivalent	Trivalent Chromate
Wing Part	SUS301	-



Overall length is shorter than Pre-Assembly Insertion Nuts HNTT. Suitable for installing sensors or other components closely together.

Ordering Example Part Number - M
 HNTAJ6 - 6

Part Number	M	HNTAJ6				PACK-HNTAJ6			
		Unit Price	Volume Discount Rate			Unit Price	Volume Discount Rate		
		1 ~ 499 pc(s).	500~749	750~999	1000~1500	1 pkg.	2~4	5~9	10~20
HNTAJ6	3 4 5 6								
PACK-HNTAJ6	3 4 5 6								

100 pcs. per package