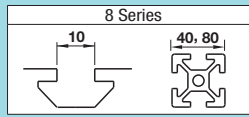


Tabbed Brackets - For 1 Slot

For 8 Series (Slot Width 10mm) Aluminum Extrusions

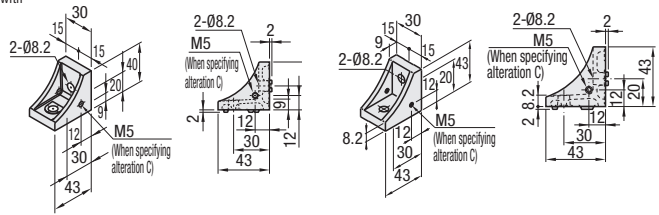


■ **Features:** Tabbed Brackets to be connected by both L and Cross-Connections.

■ Tabbed Reversal Brackets

Type	Material	Surface Treatment
① HBLFSNF8	ADC12	-
② HBLFSN8		-
③ HBLFSNB8		Black Anodize
④ HBLFSNM8		Electroless Nickel Plating
⑤ CHBLFSN8		Baked Paint (Silver)

■ **Tabbed Reversal Brackets (Depth 40mm)** ■ **Tabbed Reversal Brackets**



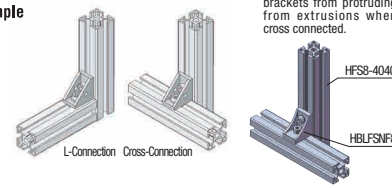
* Baked Paint (Silver) is color coordinated with Clear Coating Extrusions.

Part Number	Mass (g)	Applicable Screw	T Nut	Quantity	Quantity	Allowable Load (N)	Unit Price (1-99 pc(s))	Volume Discount Rate (100-200)
HBLFSNF8	48							
HBLFSN8	50	CBM8-20	2	HNTT8-8	2	2058		
HBLFSNB8* (Black Anodize)								
HBLFSNM8 (Electroless Nickel Plating)								
CHBLFSN8 (Baked Paint, Silver)								

* For repairing black anodizing, refer to P.846.



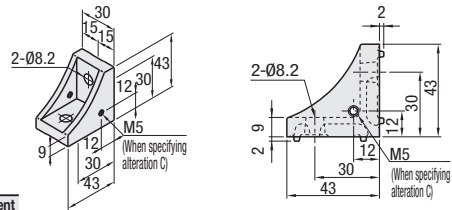
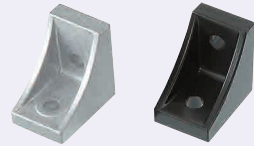
Can be installed in either direction.



■ **Features:** Brackets with tabs to fit in slots of extrusions and stop rotating when tightening.

■ Tabbed Brackets

HBLFS8
HBLFSB8
(Cathodic Electrodeposition Paint: Black)



Type	Material	Surface Treatment
HBLFS8	ADC12	-
HBLFSB8		Cathodic Electrodeposition Coating: Black

Part Number	Mass (g)	Applicable Screw	T Nut	Quantity	Quantity	Allowable Load (N)	Unit Price (1-99 pc(s))	Volume Discount Rate (100-200)
HBLFS8	54	CBM8-20	2	HNTT8-8	2	2058		
HBLFSB8*								

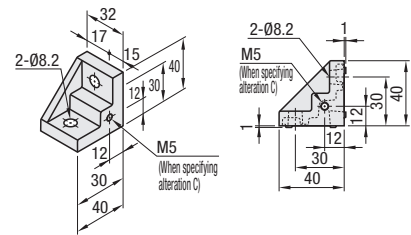


Used for L connection.

■ **Features:** One-Sided Tabbed Rib Brackets. Easy to work with wrenches.

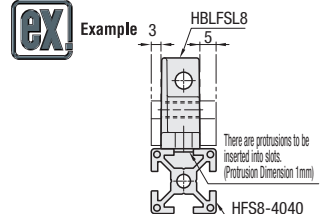
■ One-Side Rib Brackets

HBLFSL8



Material: ADC12

Part Number	Mass (g)	Applicable Screw	T Nut	Quantity	Quantity	Allowable Load (N)	Unit Price (1-99 pc(s))	Volume Discount Rate (100-200)
HBLFSL8	46	CBM8-20	2	HNTT8-8	2	2058		



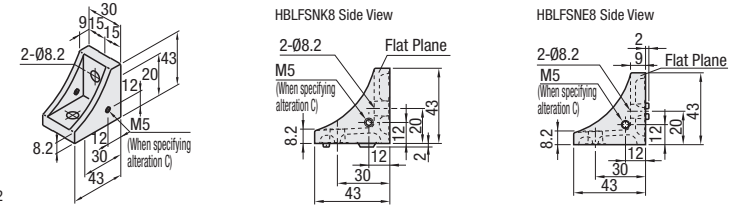
There are protrusions to be inserted into slots. (Protrusion Dimension 1mm)

Can be combined with both cover plates of 5mm and 3mm thickness.

■ **Features:** Brackets with single side tabs. Panels can be mounted on the side without tabs.

■ Brackets with Single Side Tab

HBLFSNK8
HBLFSNE8

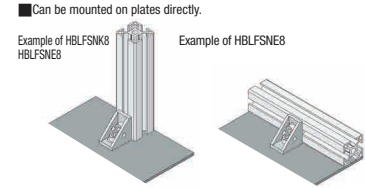


Material: ADC12

Part Number	Mass (g)	Applicable Screw	T Nut	Quantity	Quantity	Allowable Load (N)	Unit Price (1-99 pc(s))	Volume Discount Rate (100-200)
HBLFSNK8	50	CBM8-20	2	HNTT8-8	2	2058		
HBLFSNE8								



Can be mounted on plates directly.



■ **Features:** Pressing nuts against the long tabs makes cumbersome hole positioning unnecessary.

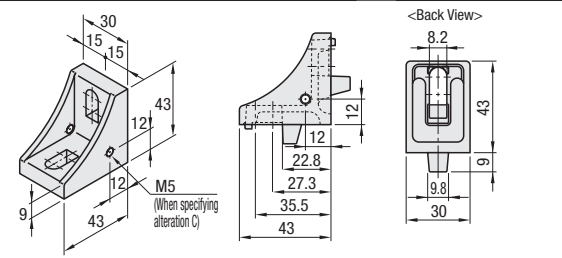
■ Nut Mounting Brackets

HBLFSR8



- Slotted holes are for various nut hole positions.
- Bracket tabs may be damaged when nuts are fallen on them.
- Use of washers is recommended. (Refer to alterations below: SEC)

Material: ADC12



Part Number	Mass (g)	Applicable Screw	T Nut	Quantity	Quantity	Allowable Load (N)	Unit Price (1-99 pc(s))	Volume Discount Rate (100-200)
HBLFSR8	55	CBM8-20	2	HNTT8-8	2	2058		



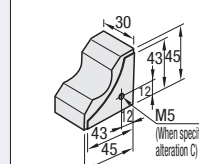
When nuts are wedged through until the tab, hole positions of bracket and nuts are aligned and fine adjustment becomes unnecessary.

Short Nuts, HNTM and HNTAM are not applicable.

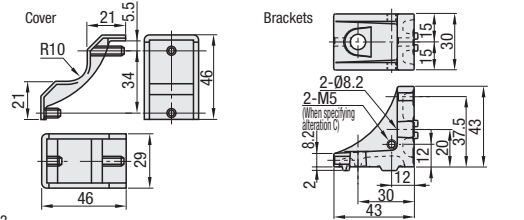
■ **Features:** Tabbed Reversal Brackets with Cover. Designed to prevent dust build-up.

■ Brackets with Cover

HBLFSNT8



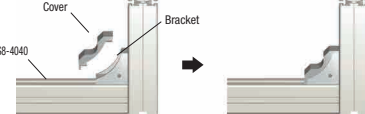
Material: Cover: Polyamide, Bracket: ADC12



Part Number	Mass (g)	Applicable Screw	T Nut	Accessory Component	Quantity	Quantity	Quantity	Quantity	Allowable Load (N)	Unit Price (1-99 pc(s))	Volume Discount Rate (100-200)
HBLFSNT8	56	CBM8-20	2	HNTT8-8	2	Bracket Body	1	Bracket Cover	1	2058	



Example of Mounting Covers to Brackets



Ordering Example: Part Number HBLFSNK8

Alterations: Part Number HBLFSNK8 - (C, SET, SST, SEU, SSU, SEP, SSP, SEC) SET

Alterations	Code	Spec.	Applicable Bracket
Mounting Hole Alteration for Cover	C	Adds taps on a bracket for cover mounting. (M5 on Both Sides) (Mounting Screw HCBM on P.754)	HBLFSNF8
			HBLFSN8
			HBLFSNB8
			HBLFSNM8
			CHBLFSN8
			HBLFS8
			HBLFSB8
			HBLFSNK8
			HBLFSNE8
			HBLFSR8
HBLFSNT8			

Alterations	Code	Spec.	Applicable Bracket		
Applicable Screws and Nuts Set	SET SST (Stainless Steel) SEU (Pre-Assembly Insertion Spring Nuts) SSU (Pre-Assembly Insertion Spring Nuts Stainless Steel) SEP (Post-Assembly Insertion Spring Nuts) SSP (Post-Assembly Insertion Spring Nuts Stainless Steel) SEC (Screws with Captured Washer and Nuts)	Applicable screws and nuts for fixing the brackets on extrusions come in a set. (Adds to the bracket price.)	HBLFSNF8		
		(Ex.) When HBLFS8 is specified:	HBLFSN8		
		Code	Screw	Nut	HBLFSNB8
		SET	CBM8-20	HNTT8-8	HBLFSNM8
		SST	SCB8-20	HNTT8-8	CHBLFSN8
		SEU	CBM8-20	HNTU8-8	HBLFS8
		SSU	SCB8-20	SHNTU8-8	HBLFSB8
		SEP	CBM8-20	HNTP8-8	HBLFSL8
		SSP	SCB8-20	SHNTP8-8	HBLFSNK8
		SEC	HCBST8-24	HNTT8-8	HBLFSNE8
			HBLFSR8		
			HBLFSNT8		

⊕ Screws for Black Anodized Brackets and Cathodic Electrodeposition Painted (black) Brackets are HCBMTB (Trivalent Chromate Black) on P.751.

⊕ Included Screw is not RoHS compliant when -SET, -SEU or -SEP other than Black Anodized or Cathodic Electrodeposition Painted (black) Brackets is specified.