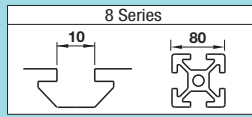


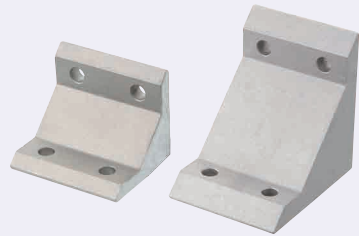
Tabbed Brackets - For 2 Slots

For 8 Series (Slot Width 10mm) Aluminum Extrusions

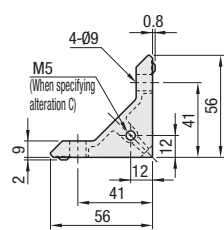
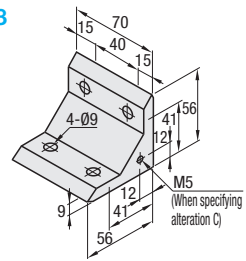


■ **Features:** Tabbed Brackets for 2-slot extrusions. Since the tabs stop rotating the brackets when tightening, work efficiency is improved.

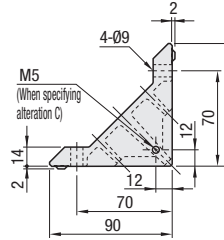
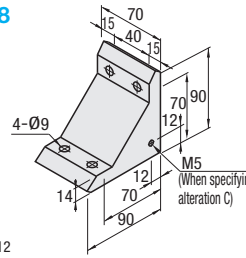
Tabbed Brackets



HBLFTD8



HBLFUD8

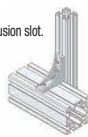


Material: ADC12

Part Number	Mass (g)	Applicable Screw		T Nut		Allowable Load (N)	Unit Price 1-99 pc(s)	Volume Discount Rate 100-200
		Screw	Quantity	T Nut	Quantity			
HBLFTD8	140	CBM8-20	4	HNTT8-8	4	3087		
HBLFUD8	370	CBM8-25	4	HNTT8-8	4	3920		



Example Can be connected in parallel and perpendicular directions to the extrusion slot.



■ **Features:** Extrusions with 2 slots (HFS8-8080, etc.) can be connected with one bracket.

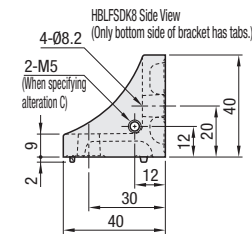
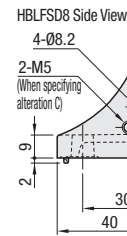
Tabbed Reversal Brackets



HBLFSD8 HBLFSDK8 (with Single Side Tab)



Material: ADC12

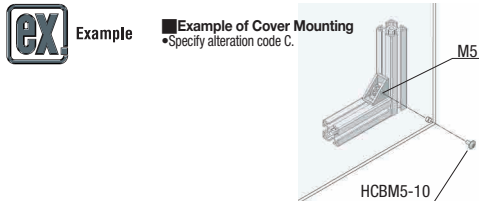


Part Number	Mass (g)	Applicable Screw		T Nut		Allowable Load (N)	Unit Price 1-99 pc(s)	Volume Discount Rate 100-200
		Screw	Quantity	T Nut	Quantity			
HBLFSD8	89	CBM8-20	4	HNTT8-8	4	3087		
HBLFSDK8								

Ordering Example Part Number HBLFSD8

Alterations Part Number HBLFSD8 (C, SET, SST, SEU, SSU, SEP, SSP, SEC) SET

Alterations	Code	Spec.	Applicable Bracket
Mounting Hole Alteration for Cover	C	Adds taps on a bracket for cover mounting. (M5 on Both Sides) (Mounting Screw HCBM on P.754)	HBLFTD8
			HBLFUD8
			HBLFSD8
			HBLFSDK8

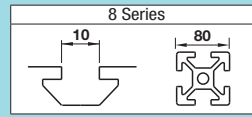


Alterations	Code	Spec.	Applicable Bracket
Applicable Screws and Nuts Set	SET	Applicable screws and nuts for fixing the brackets on extrusions come in a set. (Adds to the bracket price.)	HBLFTD8
	SST	(Stainless Steel)	HBLFTD8
	SEU	(Pre-Assembly Insertion) Spring Nuts	HBLFTD8
	SSU	(Pre-Assembly Insertion) Spring Nuts Stainless Steel	HBLFTD8
	SEP	(Post-Assembly Insertion) Spring Nuts	HBLFUD8
	SSP	(Post-Assembly Insertion) Spring Nuts Stainless Steel	HBLFUD8
	SEC	(Screws with Captured Washer and Nuts)	HBLFUD8
		Code Screw Nut	HBLFSD8
		SET CBM8-20 HNTT8-8	HBLFSD8
		SST SCB8-20 HNTT8-8	HBLFSD8
	SEU CBM8-20 HNTU8-8	HBLFSD8	
	SSU SCB8-20 SHNTU8-8	HBLFSD8	
	SEP CBM8-20 HNTT8-8	HBLFSD8	
	SSP SCB8-20 SHNTT8-8	HBLFSD8	
	SEC HCB8T8-24 HNTT8-8	HBLFSD8	
		HBLFSDK8	
		HBLFSDK8	

⚠ Included Screw is not RoHS compliant when -SET, -SEU or -SEP are specified.

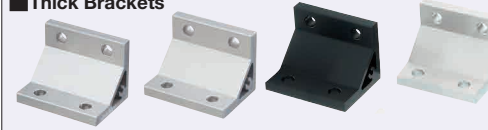
Extruded Brackets - For 2 Slots

For 8 Series (Slot Width 10mm) Aluminum Extrusions



■ **Features:** Brackets to connect Extrusions with 2 slots (HFS8-8080 etc.) with one bracket.

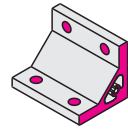
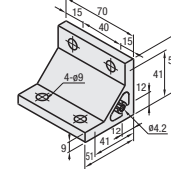
Thick Brackets



NBLTD8 HBLTD8 HBLTDB8 CHBLTD8

(Black Anodize)
(Clear Coating)

Type	Material	Surface Treatment
NBLTD8	A6063S-T5	Anodize
HBLTD8	A6063S-T5	Black Anodize
HBLTDB8	A6N01SS-T5	Black Anodize
CHBLTD8	A6N01SS-T5	Anodize



⚠ Both sides and screw holes of NBLTD8 is not anodized.

Part Number	Mass (g)	Applicable Screw		T Nut		Allowable Load (N)	Unit Price 1-99 pc(s)	Volume Discount Rate 100-200
		Screw	Quantity	T Nut	Quantity			
NBLTD8								
HBLTD8								
HBLTDB8*	154	CBM8-20	4	HNTT8-8	4	3087		
CHBLTD8								

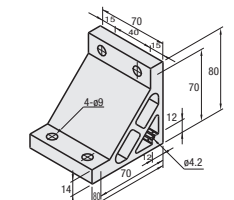
* For repairing black anodizing, refer to P.846.

■ **Features:** Numbers of screws are the same as HBLTD8. Extrusions can be connected more securely.

Ultra Thick Brackets



HBLUD8



Material: A6N01SS-T5
Surface Treatment: Anodize

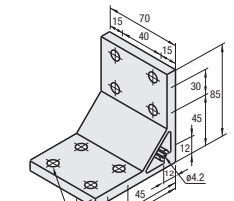
Part Number	Mass (g)	Applicable Screw		T Nut		Allowable Load (N)	Unit Price 1-99 pc(s)	Volume Discount Rate 100-200
		Screw	Quantity	T Nut	Quantity			
HBLUD8	380	CBM8-25	4	HNTT8-8	4	3920		

■ **Features:** Brackets for 2-slot extrusions with 4 mounting holes on one side can connect extrusions more securely.

Thick Brackets



HBLTDW8



Material: A6N01SS-T5
Surface Treatment: Anodize

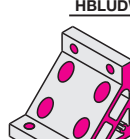
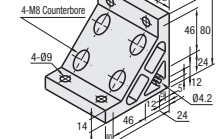
Part Number	Mass (g)	Applicable Screw		T Nut		Allowable Load (N)	Unit Price 1-99 pc(s)	Volume Discount Rate 100-200
		Screw	Quantity	T Nut	Quantity			
HBLTDW8	267	CBM8-20	8	HNTT8-8	8	4410		

■ **Features:** Numbers of screws are the same as HBLTDW8. Extrusions can be connected more securely.

Ultra Thick Brackets



NBLUDW8 HBLUDW8



⚠ Both sides and screw holes of NBLUDW8 is not anodized.

Part Number	Mass (g)	Applicable Screw		T Nut		Allowable Load (N)	Unit Price 1-99 pc(s)	Volume Discount Rate 100-200
		Screw	Quantity	T Nut	Quantity			
NBLUDW8	332	CBM8-15	4	HNTT8-8	8	5586		
HBLUDW8	332	CBM8-15	4	HNTT8-8	8	5586		

Ordering Example Part Number HBLTD8

Alterations Part Number HBLTD8 (C, SET, SST, SEU, SSU, SEP, SSP, SEC) SET

Alterations	Code	Spec.	Applicable Bracket
Mounting Hole Alteration for Cover	C	Adds taps on a bracket for cover mounting. (M5 on Both Sides, Depth 15mm) (Mounting Screw HCBM on P.754)	NBLTD8
			HBLTD8
			CHBLTD8
			HBLTDW8 HBLUDW8 NBLUDW8 HBLUDW8

Alterations	Code	Spec.	Applicable Bracket
Applicable Screws and Nuts Set	SET	Applicable screws and nuts for fixing the brackets on extrusions come in a set. (Adds to the bracket price.)	NBLTD8
	SST	(Stainless Steel)	NBLTD8
	SEU	(Pre-Assembly Insertion) Spring Nuts	HBLTD8
	SSU	(Pre-Assembly Insertion) Spring Nuts Stainless Steel	HBLTDB8
	SEP	(Post-Assembly Insertion) Spring Nuts	CHBLTD8
	SSP	(Post-Assembly Insertion) Spring Nuts Stainless Steel	HBLTDW8
	SEC	(Screws with Captured Washer and Nuts)	HBLUD8
		Code Screw Nut	HBLUDW8
		SET CBM8-20 HNTT8-8	HBLUDW8
		SST SCB8-20 HNTT8-8	HBLUDW8
	SEU CBM8-20 HNTU8-8	HBLUDW8	
	SSU SCB8-20 SHNTU8-8	HBLUDW8	
	SEP CBM8-20 HNTT8-8	HBLUDW8	
	SSP SCB8-20 SHNTT8-8	HBLUDW8	
	SEC HCB8T8-24 HNTT8-8	HBLUDW8	

⚠ Screws for black anodized brackets are HCBMTB (Trivalent Chromate Black) on P.751.

⚠ Included Screw is not RoHS compliant when -SET, -SEU or -SEP other than black anodized brackets is specified.