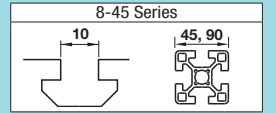


Free Angle Brackets

For 8-45 Series (Slot Width 10mm) Aluminum Extrusions

Blind Brackets

For 8-45 Series (Slot Width 10mm) Aluminum Extrusions



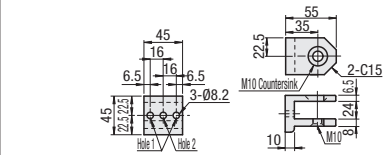
■ Features: Extrusions can be connected at any arbitrary angle.

Free Angle Brackets



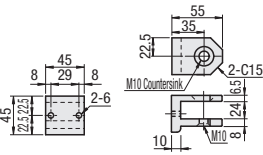
Extrusion Side Face Connection Type

HBLTBA45 (An order of quantity 1 includes 1 pc.)



Extrusion Cross Section Connection Type

HBLTBBN45 (An order of quantity 1 includes 1 pc.)

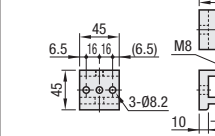


Clamp Lever Type

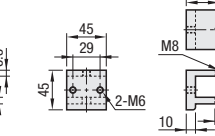
HBLTBC45 (An order of quantity 1 includes 1 pc. each of ① and ③.)

HBLTBD45 (An order of quantity 1 includes 1 pc. each of ② and ③.)

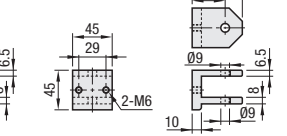
① Extrusion Side Face Connection Type



② Extrusion Cross Section Connection Type



③ Extrusion Cross Section Connection Type (Base)



Type	Material	Surface Treatment
HBLTBA45	A6N01SS-T5	Anodize
HBLTBBN45	A6N01SS-T5	Anodize
HBLTBC45	A6N01SS-T5	Anodize
HBLTBD45	A6N01SS-T5	Anodize
Included Screw	SCM435	Trivalent Chromate

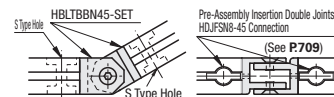
Part Number Type	Applicable Extrusion No.	Mass (g)	Accessory	Quantity	Unit Price 1 ~ 14 pc(s)	Volume Discount Rate 15~50
HBLTBA	45	113	M10x16	1		
HBLTBBN		116				
HBLTBC		299	CLDMC8-50-M	1		
HBLTBD		301				

Ordering Example Part Number **HBLTBA45**

Example

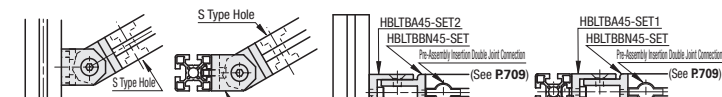
(1) Connection of Two End Sections

Two pieces of HBLTBBN are used to connect two end sections using Pre-Assembly Insertion Double Joints (P709). (With Clamp Lever Type: HBLTBD45)



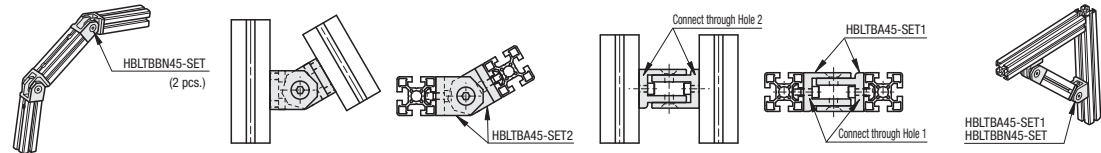
(2) Connection of Two Side Faces

To the extrusion side face, connect with HBLTBA, a screw and a nut. To the end face, use 1 HBLTBBN for 1 HBLTBA using Pre-Assembly Insertion Double Joint. (With Clamp Lever Type: HBLTBC45)



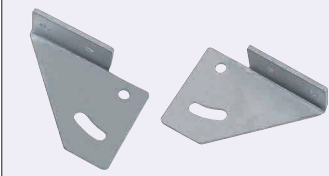
(3) Connection of Two Side Faces

Two pieces of HBLTBA are used to connect them with extrusion side using screws and nuts.



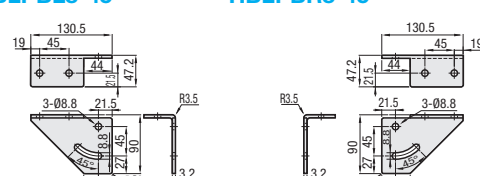
■ Features: Sheet Metal Brackets to fix at arbitrary positions.

Free Angle Sheet Metal Brackets



HBLPBL8-45

HBLPBR8-45



Material: SPCC Surface Treatment: Trivalent Chromate **RoHS10**

Part Number Type	Applicable Extrusion No.	Applicable Screw and Nut	Unit Price 1-99 pc(s)	Volume Discount Rate 100-150
HBLPBL	8-45	CBST8-15		
HBLPBR		HNTT8-8		

Example

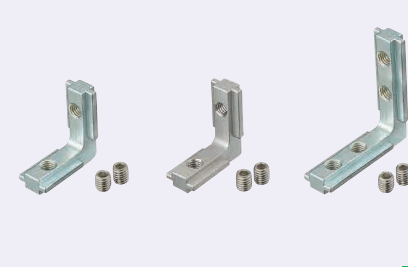


Ordering Example Part Number **HBLPBL8-45**

Alterations	Code	Spec.	Applicable Bracket
Applicable Screws and Nuts Set	SET	Supplies a set of applicable screws and nuts for fixing the bracket to an extrusion.	HBLPBL8-45 HBLPBR8-45
Set with applicable screws, nuts and clamp levers	SET1	Applicable Screw: 3 pcs. Clamp Lever (LNP): 1 pc. Flat Washer (PWF): 1 pc. Applicable Nut: 4 pcs. Set with the above items.	HBLPBL8-45 HBLPBR8-45

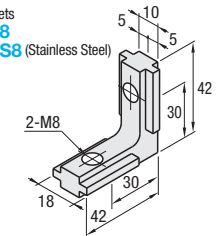
■ Features: No need for alterations to hide brackets inside of the slot.

Blind Brackets

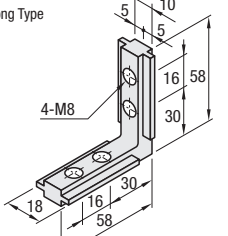


Type	Material	Surface Treatment
HBLBS8	S45C	Trivalent Chromate
HBLBSL8	S45C	Trivalent Chromate
SHBLBS8	SCS13	-

Blind Brackets **HBLBS8** **SHBLBS8** (Stainless Steel)



Blind Brackets - Long Type **HBLBSL8**

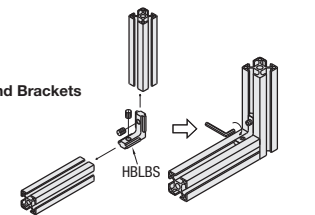


RoHS10

Part Number	Mass (g)	Included Screw	Allowable Load (N)	Unit Price 1-99 pc(s)	Volume Discount Rate 100-120
HBLBS8	70	Set Screw M8x10	2	1274	
SHBLBS8	87		4	1554	

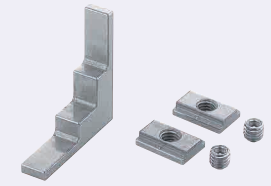
Example

How to Use: Blind Brackets



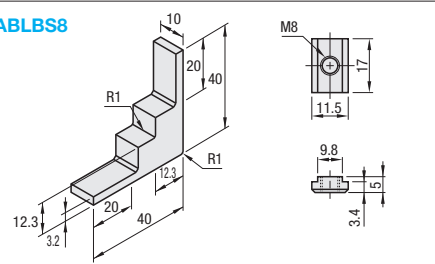
■ Features: Blind Brackets Post Assy. Insertion Type.

Post-Assembly Insertion Blind Brackets



Type	Components	Material
HABLBS8	Post-Assembly Insertion BB Body	SCS13
	Post-Assembly Insertion BB Nut	SUS304 Sintered Alloy
	Set Screw	SUS304

HABLBS8

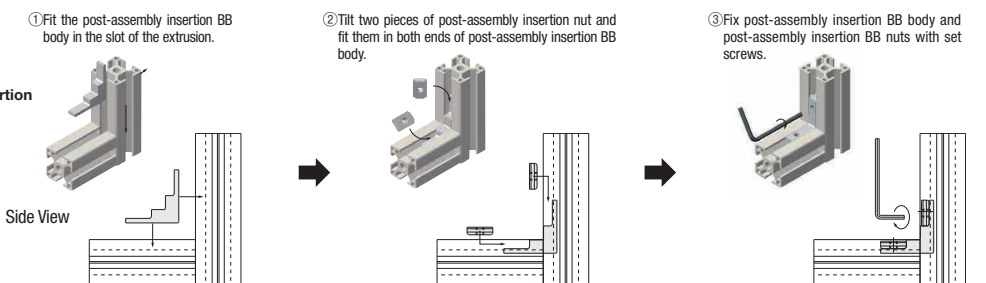


RoHS10

Part Number	Mass (g)	Included Screw	Allowable Load (N)	Unit Price 1-99 pc(s)	Volume Discount Rate 100-120
HABLBS8	47	Nut, Set Screw M8x6	2	700	

Example

How to Use Post-Assembly Insertion Blind Brackets



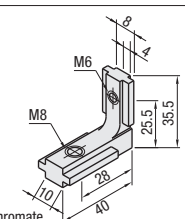
■ Features: Blind Brackets to connect 45 and 30 square Extrusions.

Blind Brackets for Different Extrusion Sizes

For 45-30 Square Connection **HBLBS8-6**



Material: S45C Surface Treatment: Trivalent Chromate **RoHS10**



Part Number	Mass (g)	Connectable Extrusion Series	Included Set Screw	Unit Price 1-99 pc(s)	Volume Discount Rate 100-120
HBLBS8-6	50	HFS8 and HFS6 HFS8-45 and HFS6	M6x8: 1 pc., M8x10: 1 pc.		

Ordering Example Part Number **HBLBS8**