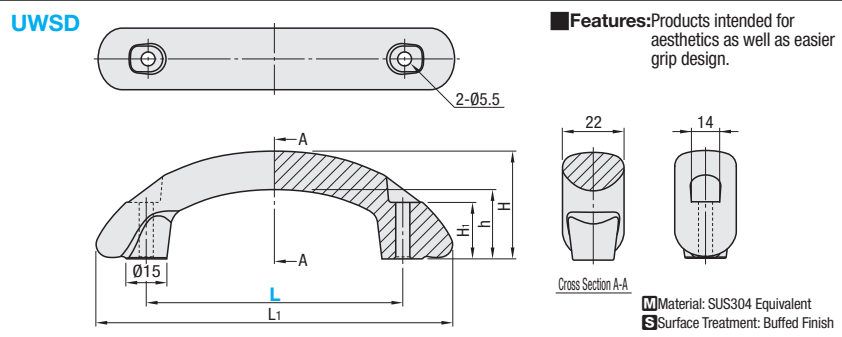
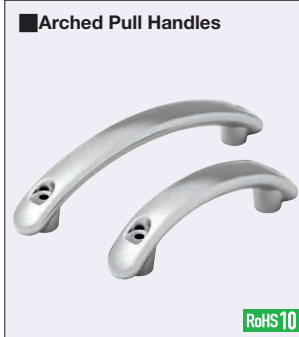
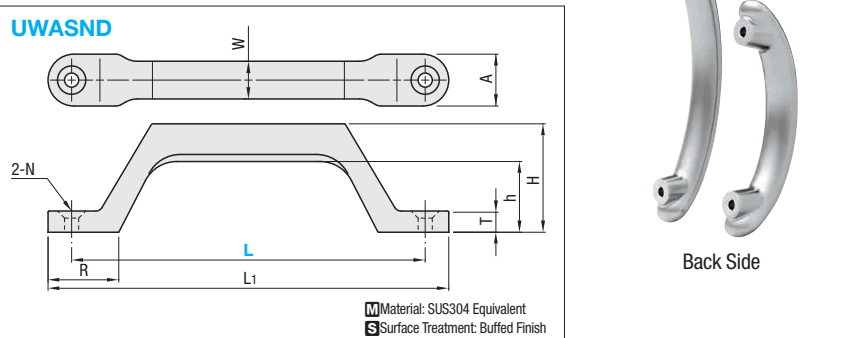


Pull Handles for Aluminum Extrusions

Pull Handles for Aluminum Extrusions / Pull Handles for Panels

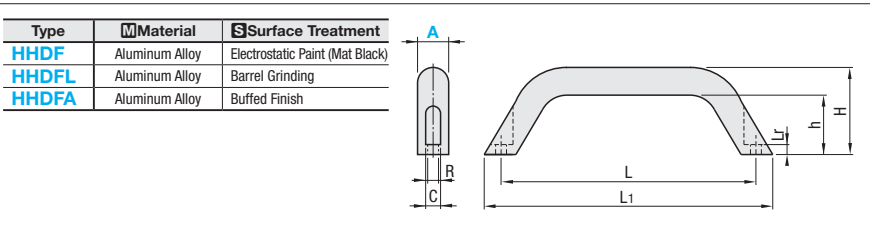


Part Number Type	L	L ₁	H	h	H ₁	Allowable Load (N)	Mass (g)	Unit Price
UWS D	100	139	42	27	21	500	337	
	150	190	44	29	17		434	



Part Number Type	L	L ₁	H	h	T	A	W	R	N Through	N Countersink	Allowable Load (N)	Mass (g)
UWS ND	80	96						20				97
	100	116	32	20	6	18	12	23	4.5	8.5	500	116
	150	170	46	30	9	22	16	30	6.5	12.5		301
	200	220	46	30	9	22	16	30	6.5	12.5		354

Ordering Example: UWS D100, UWS ND80



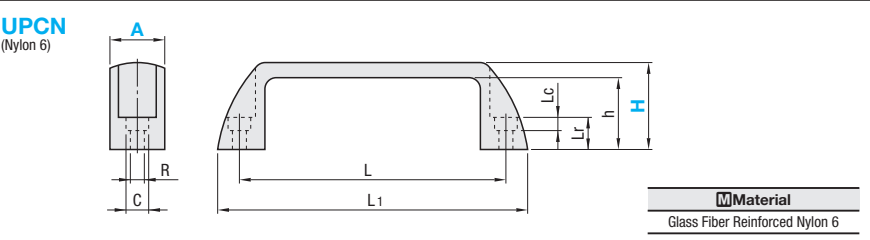
Part Number Type	Applicable Extrusion (Series)	L	L ₁	H	h	R	C	L _r	Mass (g)	Screw, Nut		Unit Price			
										Screw	Nut	HHDF	HHDFL	HHDFA	
HHDF	19	HFS5	90	107	41	29	5.3	9	64	CBM5-10	2	HNTT5-5			
	20	HFS6	93.5	112	44	31	6.5	10.5	110	CBM6-12	2	HNTT6-6			
HHDFL	26	HFS8	130	149	57	40	8.5	13.3	250	CBM8-15		HNTT8-8			

Ordering Example: HHDF19

Alterations: Part Number - (SET, SST) - SET

When SET is specified, the product is not RoHS compliant.
When SST is specified, screws and nuts will be in stainless steel.

Alteration Code	Spec.	No.
SET	Applicable screws and nuts come in a set.	19
SST (Stainless Steel)	When SST is specified, screws and nuts will be in stainless steel.	20
		26



Part Number Type	Color of Handle	H	Applicable Extrusion (Series)	h	L	L ₁	R	C	L _r	L _c	Allowable Load (N)	Mass (g)	Unit Price							
													1-9 pc(s)	10-14	15-19	20-50	W (White)	M (Orange)	R (Red)	G (Green)
UPC N	B (Black), W (White), M (Orange), R (Red), G (Green)	36	HFS5	30	90	108.5	5.5	9.5	11	6	500	23								
		45		45								24								
		51		30	93.5	112	6.5	10.5	13	7		25								
		41		45								28								
		57		34	117	139	8.5	13.3	15	9		38								
		45		50								48								
		57		37	132	156	16					54								
		52		42	152	177	6.5	10.5	13	7		62								
		50		42	179	204	8.5	13.3	17	9		66								
		71		63								68								

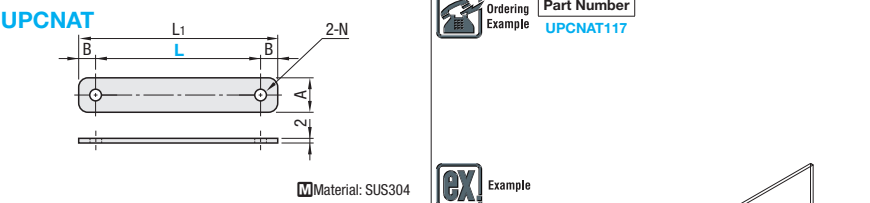
The default color of handle will be black unless specified. The default H dimension will be A19-H36, A21-H36, A26-H41, A27-H45 and A28-H50 unless specified.

Ordering Example: UPC N19 - B - 51

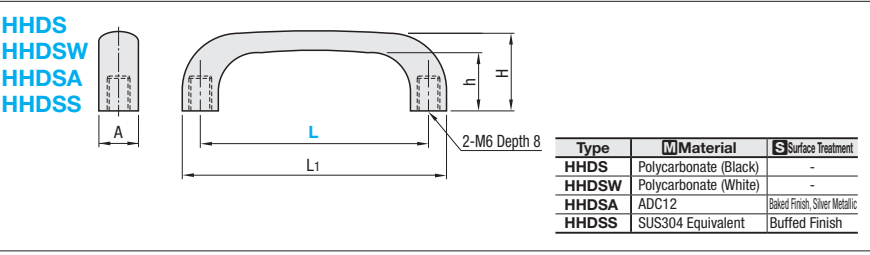
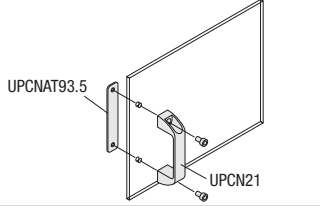
Alterations: UPC N21 - B - 51 - SET

Alteration Code	Spec.	No.
SET	Applicable screws and nuts come in a set.	19
SST (Stainless Steel)	When SST is specified, screws and nuts will be in stainless steel.	21
		26

When SET is specified, the product is not RoHS compliant.



Part Number Type	L	L ₁	A	B	N	Handle	Reference Mass (g)	Unit Price 1-9 pc(s)	Volume Discount Rate 10-200
UPC NAT	90	108.5	19	9.25	5.5	UPC N19	31		
	93.5	112	21		6.5	UPC N21	36		
	117	139	26	11		UPC N26	55		
	132	156	27	12	8.5	UPC N27	64		
	179	204	28	12.5		UPC N28	88		



Part Number Type	L	L ₁	H	h	A	Mass (g)			Unit Price			
						HHDS, HHDSW	HHDSA	HHDSS	HHDS	HHDSW	HHDSA	HHDSS
HHDS	90	110	32	24	13	17	43	90				
HHDSW	104	127	37	27.7	16	25	65	150				
HHDSA	122	149	43.3	32.5	19	42	102	220				

Ordering Example: HHDS90

