

# Casters for Aluminum Extrusions

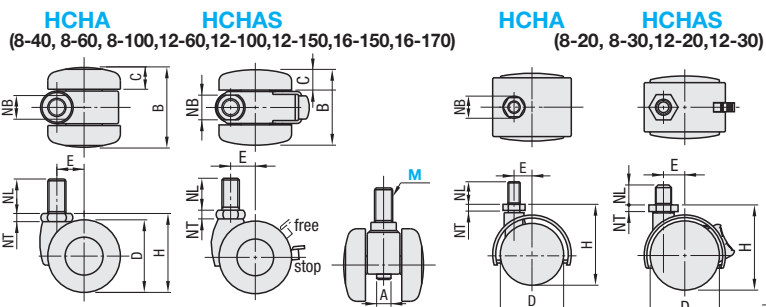
## Double Wheels Swivel, Screw-in

### Double Wheels Swivel



RoHS10

Type	Caster		Wheel		Bearing	
	M Material	S Surface Treatment	M Material (Color)	Swiveling Part	Wheel Part	Bearing Part
HCHA, HCHAS	Nylon	-	Nylon	-	-	-



Body Type	Part Number Type	M (Coarse)	Allowable Load		D	H	A	B	C	E	NB	NT	NL	HCHA		HCHAS		
			(kgf)	(N)										Unit Price	Volume Discount Rate	Unit Price	Volume Discount Rate	
HCHA HCHAS (With Stopper)	8	20*	196	40	50	-	41	13	15	13	4	15						
		30*	294	50	60	45	14	18										
		40	396	40	43.5	7	44	12	15	14	4.5	12						
		60	594	50	57.5	8	49	14	17	17	6	14						
		100	990	60	68.5	8	49	14	17	17	6	14						
		120	196	40	50	41	13	15										
	12	30*	294	50	60	45	14	18										
		60	594	50	57.5	8	49	14	17	17	6	14						
		100	990	60	68.5	8	49	14	17	17	6	14						
		150	1485	60	69	10	59	17.5										
		150	1485	75	84.5	64	18.5	20										
		170	1683	75	84.5	64	18.5	20										

Ordering Example Part Number - W  
HCHA12 - 100

### Mounting

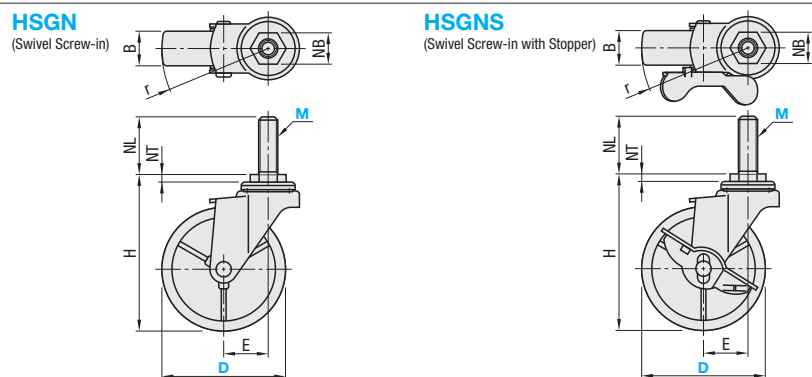
Turn the hex screw head at the lower part of wheel, (the part shown with A) then the upper thread part of screw will turn. Tighten by the flats shown as NB.

For \* marked types, install and tighten the NB part with a wrench.

### Swivel Screw-in



RoHS10



Type	Caster		Wheel		Bearing	
	M Material	S Surface Treatment	M Material (Color)	Swiveling Part	Wheel Part	Bearing Part
HSGN, HSGNS	SPHC	Trivalent Chromate	Synthetic Rubber (Black), Urethane (Brown), Nylon (White)	Provided	Not Provided	Provided

Body Type	Part Number Type	M (Coarse)	Wheel Material	Wheel Width B				E	NB	NT	NL	r	Allowable Load (N)			Mass (g)			Unit Price		
				R	U	N	R						U	N	R	U	N				
Swivel Screw-in	HSGN	50	R (Rubber) U (Urethane) N (Nylon)	68	20	21	21	22	14	4.8	14	47	300	380	400	195	175	165			
		12		85	21	21	21	23	19	35	56	400	400	270	220	210					
		65		126	25	28	25	31	21	4	40	82	500	600	600	585	435	405			
		75		126	25	28	25	31	21	4	40	82	500	600	600	585	435	405			
Swivel Screw-in with Stopper	HSGNS	50	R (Rubber) U (Urethane) N (Nylon)	68	20	21	21	22	14	4.8	14	49	300	380	400	220	200	190			
		12		85	21	21	21	23	19	35	57	300	400	305	255	235					
		65		126	25	28	25	31	21	4	40	82	500	600	600	585	435	405			
		75		126	25	28	25	31	21	4	40	82	500	600	600	585	435	405			

Ordering Example Part Number - M - Wheel Material  
HSGN75 - 12 - U

# Casters for Aluminum Extrusions / Side Mount Caster Brackets / Mounting Plates for Casters & Leveling Mounts

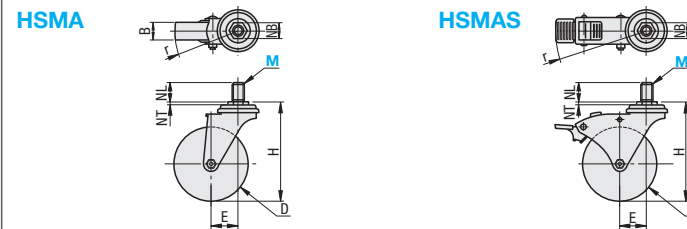
## Rubber Wheel

### Rubber Wheel



RoHS10

Type	Caster		Wheel		Bearing	
	M Material	S Surface Treatment	M Material (Color)	Swiveling Part	Wheel Part	Bearing Part
HSMA, HSMAS	SPHC	Trivalent Chromate	Synthetic Rubber (Black)	Provided	Provided	Provided



Body Type	Part Number Type	M (Coarse)	Allowable Load		D	H	B	E	NB	NT	NL	r	Mass (g)	Unit Price
			(kgf)	(N)										
Swivel	HSMA	12	60	594	75	105	25	30	23	4	25	72	500	
		16	70	695	100	137	25	35	23	4	25	89	700	
Swivel with Stopper	HSMAS	12	60	594	75	105	25	30	23	4	25	105	640	
		16	70	695	100	137	25	35	23	4	25	128	950	

Ordering Example Part Number - W  
HSMAS16 - 70

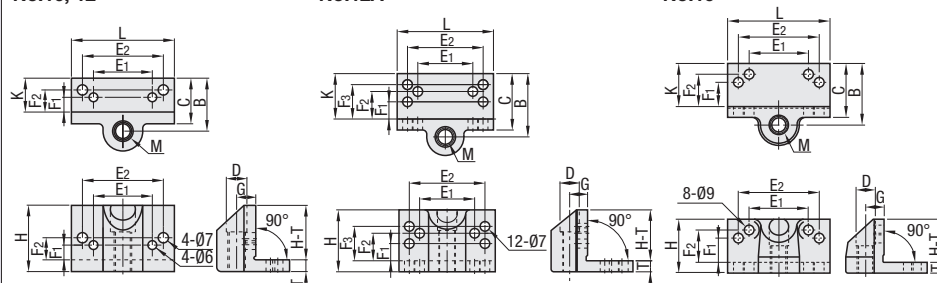
### Side Mount Caster Brackets



For mounting hole configurable type, see P.1084.

RoHS10

### CPHAL No.10, 12 No.12A No.16

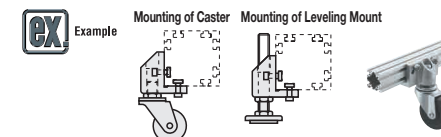


Material: ADC12 Surface Treatment: Baked Finish (Silver)

Part Number Type	No.	Extrusion (Single Slot)	M (Coarse)	H	L	B	K	C	T	D	G	Mounting Hole Dimension			Mass (g)	Unit Price	
												E1	E2	F1			
CPHAL	10	20 Square, 30 Square	10	45	70	36	23	31	8	14	13	40	55	10	15	-	135
	12	25 Square, 40 Square, 50 Square	12	50	95	46	33	41	8	14	13	40	55	12.5	20	25	165
	12A	25 Square, 40 Square, 50 Square	12	50	95	46	33	41	8	14	13	40	55	12.5	20	25	165
	16	45 Square, 60 Square	16	50	95	57	40	50	10	20	17	55	75	22.5	30	-	285

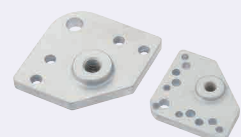
\* 5-4040 is applicable to No.10, 12, 16.

Ordering Example Part Number  
CPHAL10

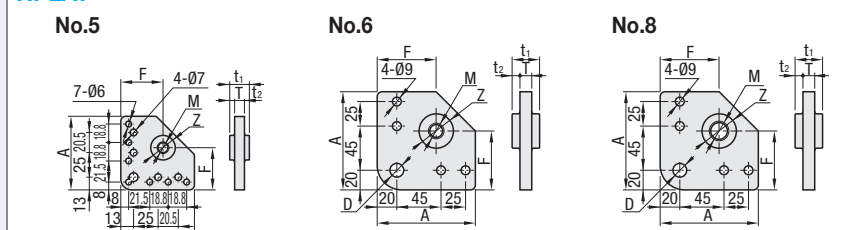


### Mounting Plates for Casters & Leveling Mounts

### HPLAT



RoHS10



Material: ADC12

Part Number Type	No.	Extrusion	A	T	M	Z	D	F	t1	t2	Mass (g)	Unit Price	Volume Discount Rate
HPLAT	5	20 Square, 30 Square	75	10	12	25	-	43	20	5	120		
	6	40 Square	100	12	16	35	14	60	28	8	281		
	8											273	

Ordering Example Part Number  
HPLAT6