

Rollers

Urethane Thickness Selectable

For products uncovered by the e-Catalog Standard, see P.131.

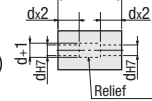
Features: As part of the Catalog Standard Extension, the upper limit for L dim. is enlarged from 100mm to 200mm.



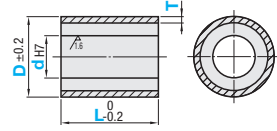
Type			Material		Hardness	Bearing
No Bearing	With Bearings		Core	Lining		
ROEUHS	ROERUHS	Crowned	SUS304	Urethane (Natural Color)	Shore A95	Steel
ROEUHA	ROERUHA	Straight	Aluminum Alloy			
ROEUHA	ROERUHA	Straight	SUS304			
ROEUA	ROERUA	Crowned	Aluminum Alloy			
ROEUA	ROERUA	Straight	SUS304			
ROEGA	ROERGA	Crowned	Aluminum Alloy			
ROEGA	ROERGA	Straight	SUS304			
ROERHS	ROERHS	Crowned	Aluminum Alloy			
ROERHA	ROERHA	Straight	SUS304			
ROERHA	ROERHA	Straight	Aluminum Alloy			

When $L \leq dx3$, hole d is machined from the same direction.

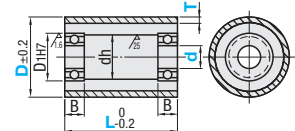
When $L > dx3$, hole d is machined from both ends as shown below. There may be no relief in some cases.



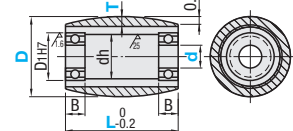
No Bearing Straight



With Bearings Straight



Crowned



No Bearing Type

Part Number	D	dh7 Selection	L 10mm Increment	T Selection
Straight ROEUHS ROEUHA ROEUS ROEUA ROEGS ROEGA	20	8	20-100	5
	25	8 10 12	20-150	
	30	8 10 12 15		
	35	8 10 12 15		
	40	8 10 12 15		
	50	10 12 15 20		5
	60	12 15 20 25		
	80	15 20 25 30		
	100	20 25 30 40		
	100	20 25 30 40	30-200 30-150 when $ds \leq 15$	

With Bearings

Part Number	D	d Selection	L 10mm Increment	T Selection	D1	dh	B	Bearing Used				
Straight Crowned ROERUHS ROERUHA ROERUS ROERUA ROERGA ROERHS ROERHA	40	8	20-200	5	19	15	6	698ZZx2				
		10			22	18	6	6900ZZx2				
		12			22	18	6	6900ZZx2				
		15			28	24	8	6001ZZx2				
	50	12			30-200	5	32	28	9	6002ZZx2		
		15					28	24	8	6001ZZx2		
		20					32	28	9	6002ZZx2		
		25					42	36	12	6004ZZx2		
	60	15					5	10	32	28	9	6002ZZx2
		20							42	36	12	6004ZZx2
		25	47	41					12	6005ZZx2		
		30	42	36					12	6004ZZx2		
	80	20	10	10					47	41	12	6005ZZx2
		25							47	41	12	6005ZZx2
		30			47	41			12	6005ZZx2		
		35			55	48			13	6006ZZx2		

For Crowned Type, $L \leq 100$. For details for Bearings, see P.1017.

D	L	Unit Price					
		ROEUHS	ROEUHA	ROEUS	ROEUA	ROEGS	ROEGA
20	20						
	30, 40, 50						
	60-100						
25	20						
	30, 40, 50						
	60-100						
30	20						
	30, 40, 50						
	60-100						
	110-150						
35	20						
	30, 40, 50						
	60-100						
	110-150						
40	20						
	30, 40, 50						
	60-100						
	110-150						
	160-200						
50	30, 40, 50						
	60-100						
	110-150						
	160-200						
	30, 40, 50						
60	60, 70						
	80, 90, 100						
	110-150						
	160-200						
	30, 40, 50						
80	60, 70						
	80, 90, 100						
	110-150						
	160-200						
	30, 40, 50						
100	60, 70						
	80, 90, 100						
	110-150						
	160-200						
	30, 40, 50						

D	L	Unit Price							
		ROERUHS	ROERUHA	ROERUS	ROERUA	ROERGS	ROERGA	ROERHS	ROERHA
20	20								
	30, 40, 50								
	60-100								
	110-150								
40	30, 40, 50								
	60-100								
	110-150								
	160-200								
50	30, 40, 50								
	60-100								
	110-150								
	160-200								
60	80, 90, 100								
	110-150								
	160-200								
	30, 40, 50								
80	80, 90, 100								
	110-150								
	160-200								
	30, 40, 50								
100	80, 90, 100								
	110-150								
	160-200								
	30, 40, 50								

D	L	Unit Price			
		ROECRUS	ROECRUA	ROECRGA	ROECRHA
40	20				
	30, 40, 50				
	60-100				
50	30, 40, 50				
	60-100				
	110-150				
60	60, 70				
	80, 90, 100				
	110-150				
80	60, 70				
	80, 90, 100				
	110-150				
100	60, 70				
	80, 90, 100				
	110-150				

Urethane may discolor over time, but there is no effect on physical properties.

Ordering Example: Part Number - d - L - T
ROEUS60 - 20 - 50 - T5

Alterations: Part Number - d - L - T - (MC)
ROEUAS0 - 12 - 50 - T5 - MC

Alteration Code	Tapping MC								
Spec.	<p>Adds 2 tapped holes at 90°.</p> <table border="1"> <tr> <th>D</th> <th>M</th> </tr> <tr> <td>35, 40</td> <td>4</td> </tr> <tr> <td>50, 60, 80</td> <td>5</td> </tr> <tr> <td>100</td> <td>6</td> </tr> </table> <p>Ordering Code: MC</p> <p>Applicable to "No Bearing" Type only.</p>	D	M	35, 40	4	50, 60, 80	5	100	6
D	M								
35, 40	4								
50, 60, 80	5								
100	6								