

Flat Belt Conveyors - Motor Mounting Position Selectable

Head Drive, 2-Groove Frame (Pulley Dia. 30mm)

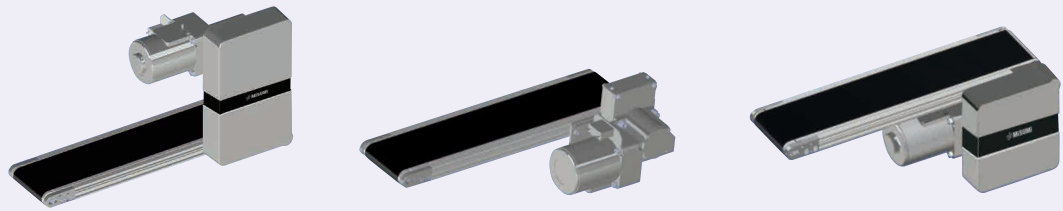
CE Compliant

* The above compliance applies only for Single-phase 230V Motors.

Dedicated web site <http://fa.misumi.jp/cvs/>

The above site can be used to search for Conveyor components and their maintenance parts.

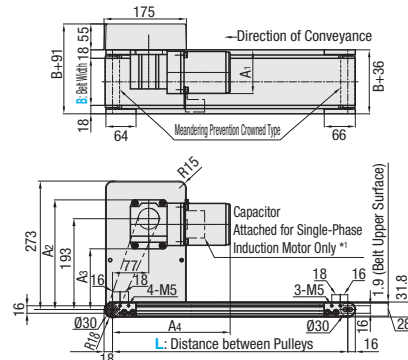
■ **Features:** The motor mounting position is selectable from top mounting, bottom mounting, or side mounting. Adoption of orthogonal shaft gear head solves the mounting space issue.



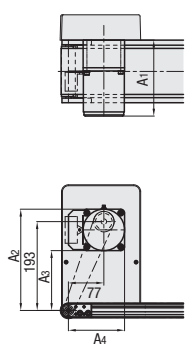
CVMA

Top Mount Type (TM)

Motor mounting position specifications for **TM1, TM2, and TM3**

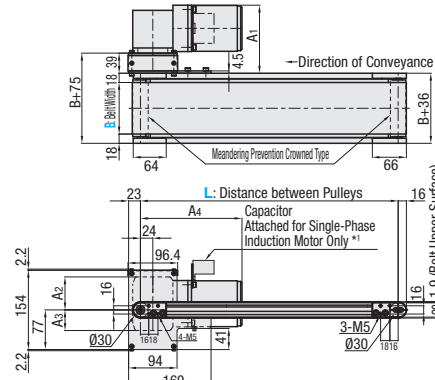


Motor mounting position specifications for **TM5**

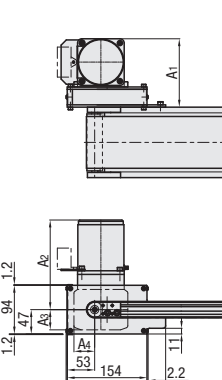


Side Mount Type (SM)

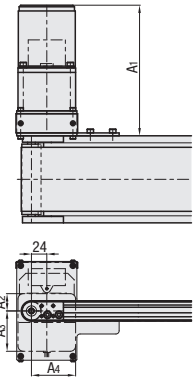
Motor mounting position specifications for **SM1 and SM3**



Motor mounting position specifications for **SM2 and SM4**

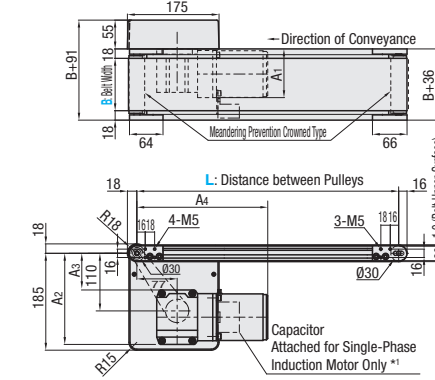


Motor mounting position specifications for **SM5**

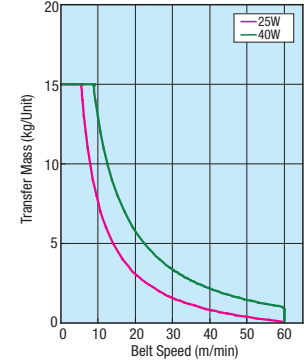


Bottom Mount Type (BM)

Motor mounting position specifications for **BM1, BM3, and BM4**



Conveying Capacity (TM, SM, BM) * Reference Value



Gearhead Reduction Ratio

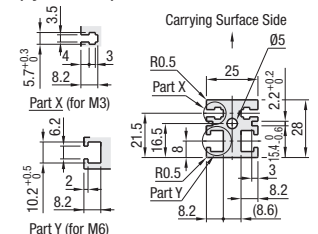
* May decrease depending on load condition.

Gearhead Reduction Ratio	Belt Speed (m/min)		Belt Speed (m/min)	
	TM, BM	50Hz	SM	60Hz
5	56.4	67.7	28.2	33.8
7.5	37.6	45.1	18.8	22.6
9	31.3	37.6	15.7	18.8
12.5	22.6	27.1	11.3	13.5
15	18.8	22.6	9.4	11.3
18	15.7	18.8	7.8	9.4
25	11.3	13.5	5.6	6.8
30	9.4	11.3	4.7	5.6
36	7.8	9.4	3.9	4.7
50	5.6	6.8	2.8	3.4
60	4.7	5.6	2.4	2.8
75	3.8	4.5	1.9	2.3
90	3.1	3.8	1.6	1.9
100	2.8	3.4	1.4	1.7
120	2.4	2.8	1.2	1.4
150	1.9	2.3	0.9	1.1
180	1.6	1.9	0.8	0.9

⚠ On some operating environments, conveyance failure may occur.

	Frame	Motor Cover	Pulley Holder
M Material	Aluminum	Aluminum	Aluminum
S Surface Treatment	Clear Anodize	Paint	Paint

Frame Cross Section and Enlarged View (Symmetrical)



⚠ Compatible with JIS standard hex nuts.
 * Each slot has four (4) nuts inserted.
 When counterbores for inserting nuts are required, so specify in form of alteration ordering.
 * Capacitor is included with single-phase induction motors only. Capacitor mounting position can be arranged by the customer.
 ⚠ The dimensions in the diagram is for Belt Specifications H (0.9mm THK). Note that belt thickness varies by Belt Specifications. For Belt Specifications, see P.1313-.
 ⚠ For relevant dimensions depending on motor mounting direction, and motor type, see P.1273.

Part Number Type	Motor Mounting Position	B 10mm Increment	L 5mm Increment	Output (W)	Motor			Belt Specification	Motor Manufacturer Selection
					Voltage (V)	Specification	Gearhead Reduction Ratio		
CVMA	TM1 SM1 BM1 TM2 SM2 TM3 SM3 BM3 SM4 BM4 TM5 SM5	50-300	200-2000	25 40	T100 (Single-phase) T200 (Single-phase)	IM (Induction Motor) SCM (Variable Speed Motor)	5 7.5 9 12.5 15 18 25 30 36 50 60 75 90 100 120 150 180	H (General Specifications, Green) W (General Specifications, White) G (For Sliding, Green) S (For Sliding, White) D (For Electronic Parts Transfer, Black) F (For Food Transfer, White) O (Oil Resistant, Navy Blue) N (Non-adhesive, White) J (No Belt)	A (Panasonic Motor) B (Oriental Motor) * SCM (Variable Speed Motor) is not selectable for A. ⚠ When output is 25, Panasonic Motor is not applicable.
					S200 (3-phase)	IM (Induction Motor)		* For other belt specifications, see Belt Selection Table below.	

⚠ Connect the motor so that the belt rotates in the direction of conveyance. For connection diagram, and details of motor and inverter, see P.1301-.
 ⚠ A worm gear is used for orthogonal shaft gear head. Note, therefore, that the motor cannot be rotated from the belt side for maintenance work, etc.
 ⚠ Purple Color Type of Belt is the Catalog Standard-Altered product. For details, see P.1313-.

Motor Mounting Position Selection Table

Gearhead	Motor Mounting Position		
	Top Mount	Side Mount	Bottom Mount
Orthogonal Shaft			
Parallel Shaft			

⚠ For relevant dimensions depending on motor mounting direction, and motor type, see P.1273.

Belt Selection Table

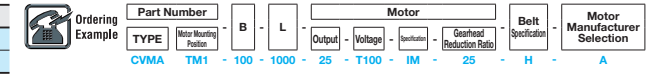
Belt Specification	Standard Belt (Body Price Only)	Optional Belt 1	Optional Belt 2	No Belt
General Purpose	H (Green), W (White), HG (Green)	-	HY (Yellow Green), HBN (Sky Blue)	J (No Belt)
For Sliding	G (Green), S (White)	-	-	
For Inclined Transfer	LG (Green), LW (White)	-	-	
Grip Type	-	GG (Green), GW (White)	GSN (Green)	
Oil Resistant	O (Navy Blue), OH (Green), OG (Green)	OW (White)	ON (White)	
Non-adhesive	N (White), NS (White)	NB (Sky Blue), NBG (Lime Green), HH (Green), HW (White)	NWN (White), NSN (Sky Blue), NGN (Lime Green), HBG (Green), HBW (White), BW (White)	
For Food Transfer	F (White)	KW (White), KSB (Sky Blue), PHB (Sky Blue)	PHN (Sky Blue), PWN (White), KWN (White)	
For Electronic Parts Transfer	D (Black), DS (Black)	-	DG (Black)	

⚠ For flat belt details, see P.1313.
 ⚠ Since only the transporting surface side is designed to be oil resistant, Oil Resistant Types are not useable on environments where it is very likely that oil adheres to the back face.

Part Number	B	Body Price 1-10 pc(s).																		
		L200-300	L305-400	L405-500	L505-600	L605-700	L705-800	L805-900	L905-1000	L1005-1100	L1105-1200	L1205-1300	L1305-1400	L1405-1500	L1505-1600	L1605-1700	L1705-1800	L1805-1900	L1905-2000	
CVMATM□ CVMABM□	50-100																			
	110-150																			
	160-200																			
	210-250																			
CVMASM□	50-100																			
	110-150																			
	160-200																			
	210-250																			
	260-300																			
	310-350																			
	360-400																			
	410-450																			

⚠ For orders larger than indicated quantity, please check with WOS.

Motor Spec. Price	Motor Output	Specification	Motor	
			A (Panasonic Motor)	B (Oriental Motor)
25W 40W	IM SCM			



Gearhead Spec. Price	Mounting Position	Motor	
		A (Panasonic Motor)	B (Oriental Motor)
	TM5, SM5		
	TM1-3 SM1-4 BM1-4		

Belt Spec. Price	Belt			
	Standard Belt	Optional Belt 1	Optional Belt 2	No Belt

Alterations
 Motor Position Reversed
 Additional Counterbores
 Motor Cover with Window
 Brackets for Speed Controller Included
 Post-Assembly Insertion Nuts Included
 Motor with Terminal Box
 Stands (Legs)
 For details of Alterations, see P.1298-.