

Locating Pins - Large Flat Head

Tapped

For products uncovered by e-Catalog Standard, see P.131.

Features: Large Flat Head with the shape designed to be mounted from back using bolts. Improved maintainability compared to Press Fit Type.



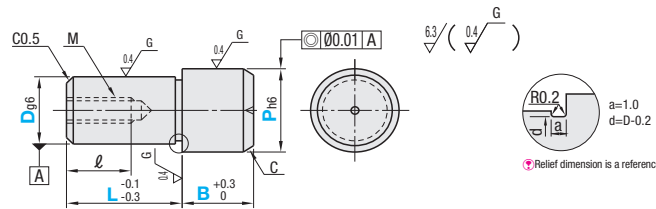
(Alteration CN)

Material No.	Material	Surface Treatment	Hardness	Type	
				P Selectable	P, L, B Configurable
(1)	SKS3 Equivalent	-	Treated Hardness: 60~63HRC	JPDTA	FPDTC
(2)	SKS3 Equivalent	Hard Chrome Plating	Treated Hardness: 50~53HRC Plating Hardness: 750HV _{0.05}	GJPDTA	GFPDTC
(3)	SKS3 Equivalent	-	-	-	BFPDTC
(4)	SUS304*	-	-	SJPDTA	SFPDTC
(6)	SUS440C or 13Cr stainless	-	Treated Hardness: 50~55HRC	CJPDTA	-

* For P Selectable Type, it is SUS304 equivalent.

P dim. Tolerance Table

P	h6
5.50-6.00	0 -0.008
6.01-10.00	0 -0.009
10.01-18.00	0 -0.011
18.01-30.00	0 -0.013



Polished, centering hole is sometimes not available for SUS304.
SUS440C or 13Cr stainless has an identification groove at any position on D part.

P Selectable

Part Number		P Selection	L	B	M (Coarse)	*Tightening Torque N·cm	ℓ	C
Type	D D dim. Tolerance g6							
JPDTA GJPDTA SJPDTA CJPDTA	6	8, 10	10	5	M3	98	5	1
	8	12	12	6	M5	461	8	1.5
	10	12, 14	16	10				2
	12	16	20	20				M8
	13	18	22	22				
	16	25	24	25				
	20	30	32	30				

P, L, B Configurable

Part Number		P 0.01mm Increment	L 1mm Increment	B 0.1mm Increment	M (Coarse)	*Tightening Torque N·cm	ℓ	C
Type	D D dim. Tolerance g6							
FPDTC GFPDTC BFPDTC SFPDTC	5	5.50~8.00	5~10	1.5~15.0	M2	-	3	1
	6	6.50~10.00	6~12	1.5~15.0	M3	98	5	
	6T	-	-	-	M2.6	-	4	
	8	8.50~15.00	8~16	1.5~30.0	M5	461	8	1.5
	8T	8.50~15.00	6~16	1.5~30.0	M4	225	6	
	10	11.00~17.00	10~20	3.0~30.0	M5	461	8	2
	10T	11.00~17.00	6~16	3.0~30.0	M4	225	6	
	12	13.00~18.00	12~24	3.0~30.0	M5	461	8	
	12T	13.00~18.00	8~18	3.0~30.0	M4	225	6	3
	13	14.00~20.00	13~26	5.0~30.0	M8	1911	12	
	13T	14.00~20.00	8~20	5.0~30.0	M6	784	9	
	16	17.00~27.00	16~32	5.0~35.0	M8	1911	12	3
	16T	17.00~27.00	10~24	5.0~35.0	M6	784	9	
	20	22.00~30.00	20~40	5.0~40.0	M8	1911	12	
	20T	22.00~30.00	12~30	5.0~40.0	M6	784	9	

Pins of D dimension with T have one size smaller thread diameter and larger wall thickness. (Actual D dimension is the number without "T".)
Note the strength of under-head part. P.1618. Please confirm pilot hole depth on P.1618. Holes may go through.
*The tightening torque (ref. value) for hardened products is strength class 5.8. (See technical data on P.2365.) Not applicable when using locking materials or lock washers.

Ordering Example

Part Number	P	L	B
JPDTA10	- 14	-	-
FPDTC12T	- P14.25	- L18	- B8.6

(4) Price List for Large Qty. Order of SUS304 (301-500 pcs.)

D	Tapped
	SFPDTC
5	
6	
6T	
8	
8T	
10	
10T	
12	
12T	
13	
13T	
16	
16T	
20	
20T	

P Selectable

D	Unit Price			
	(1)Treated SKS3 JPDTA	(2)Hard SKS3 GJPDTA	(4)SUS304 SJPDTA	(6)SUS440C or 13Cr stainless CJPDTA
6				
8				
10				
12				-
13			-	-
16				-
20			-	-

P, L, B Configurable

D	Unit Price			
	(1)Treated SKS3 FPDTC	(2)Hard SKS3 GFPDTC	(3)SKS3 BFPDTC	(4)SUS304 SFPDTC
5				
6				
6T				
8				
8T				
10				
10T				
12				
12T				
13				
13T				
16				
16T				
20				
20T				

Alterations Part Number - P - L - B - (RC, CN, RAC, LAC)
SFPDTC8 - P10.00 L8 B5.0 - CN

Alterations	Sphere Tip	C Chamfered Size	Hex Socket Machining	Wrench Hole Machining																																																																																
	Code	RC	CN	RAC	LAC																																																																															
Spec.	Changes the relief to R0.5. (Ordering Code) RC Applicable when P-D≥2 Combination with RAC or LAC is not available.	Changes C Chamfering at P dimension part to 0.5 or less. Not applicable to D dimension part.	Machines hex sockets. (Ordering Code) RAC <table border="1"> <thead> <tr> <th>D</th> <th>Applicable Dimension</th> <th colspan="2">Hex Hole Dimensions</th> </tr> <tr> <th></th> <th>L</th> <th>B</th> <th>S</th> </tr> </thead> <tbody> <tr><td>5</td><td>8~</td><td>8.0~</td><td>2 2</td></tr> <tr><td>6 6T</td><td>10~</td><td>8.0~</td><td>2 3</td></tr> <tr><td>8 8T</td><td>10~</td><td>12.5~</td><td>2.5 4</td></tr> <tr><td>10 10T</td><td>12~</td><td>13.0~</td><td>3 5</td></tr> <tr><td>12 12T</td><td>12~</td><td>16.0~</td><td></td></tr> <tr><td>13 13T</td><td>15~</td><td>19.0~</td><td>4 6</td></tr> <tr><td>16 16T</td><td>16~</td><td>20.0~</td><td></td></tr> <tr><td>20 20T</td><td>20~</td><td>20.0~</td><td>5 8</td></tr> </tbody> </table> Combination with RC or LAC is not available.	D	Applicable Dimension	Hex Hole Dimensions			L	B	S	5	8~	8.0~	2 2	6 6T	10~	8.0~	2 3	8 8T	10~	12.5~	2.5 4	10 10T	12~	13.0~	3 5	12 12T	12~	16.0~		13 13T	15~	19.0~	4 6	16 16T	16~	20.0~		20 20T	20~	20.0~	5 8	Machines wrench holes. (Ordering Code) LAC <table border="1"> <thead> <tr> <th>D</th> <th>Applicable Dim.</th> <th colspan="2">Wrench Hole Dimensions</th> </tr> <tr> <th></th> <th></th> <th>P</th> <th>Q</th> </tr> </thead> <tbody> <tr><td>5</td><td>8.0~</td><td>5.50~9.99</td><td>2</td></tr> <tr><td>6 6T</td><td>8.0~</td><td>10.00~16.99</td><td>3.5</td></tr> <tr><td>8 8T</td><td>9.0~</td><td>17.00~</td><td>5</td></tr> <tr><td>10 10T</td><td>9.0~</td><td></td><td></td></tr> <tr><td>12 12T</td><td>9.0~</td><td></td><td></td></tr> <tr><td>13 13T</td><td>14.0~</td><td></td><td></td></tr> <tr><td>16 16T</td><td>15.0~</td><td></td><td></td></tr> <tr><td>20 20T</td><td>15.0~</td><td></td><td></td></tr> </tbody> </table> Combination with RC or RAC is not available.	D	Applicable Dim.	Wrench Hole Dimensions				P	Q	5	8.0~	5.50~9.99	2	6 6T	8.0~	10.00~16.99	3.5	8 8T	9.0~	17.00~	5	10 10T	9.0~			12 12T	9.0~			13 13T	14.0~			16 16T	15.0~			20 20T	15.0~		
D	Applicable Dimension	Hex Hole Dimensions																																																																																		
	L	B	S																																																																																	
5	8~	8.0~	2 2																																																																																	
6 6T	10~	8.0~	2 3																																																																																	
8 8T	10~	12.5~	2.5 4																																																																																	
10 10T	12~	13.0~	3 5																																																																																	
12 12T	12~	16.0~																																																																																		
13 13T	15~	19.0~	4 6																																																																																	
16 16T	16~	20.0~																																																																																		
20 20T	20~	20.0~	5 8																																																																																	
D	Applicable Dim.	Wrench Hole Dimensions																																																																																		
		P	Q																																																																																	
5	8.0~	5.50~9.99	2																																																																																	
6 6T	8.0~	10.00~16.99	3.5																																																																																	
8 8T	9.0~	17.00~	5																																																																																	
10 10T	9.0~																																																																																			
12 12T	9.0~																																																																																			
13 13T	14.0~																																																																																			
16 16T	15.0~																																																																																			
20 20T	15.0~																																																																																			