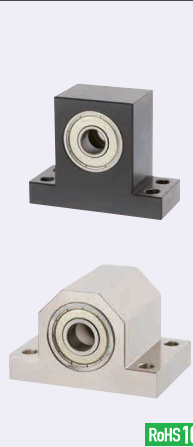


# Bearings with Housings

## T-Shaped Double Bearings

For products other than e-Catalog standards, see P.131.

Features: More stable than the single type and suitable for cantilever applications that bear a load.

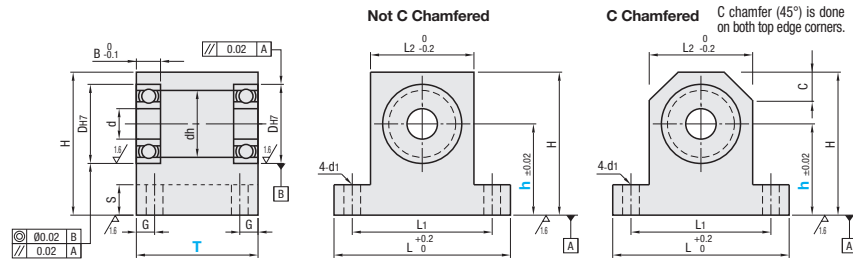


Type			Material	Surface Treatment
T Selectable, h Configurable	T, h Configurable	T Selectable, h Configurable, C Chamfered	Bearing	Housing
BGHWFB	BGHWTB	BGHWFB-C	Steel	Black Oxide
BGHWF	BGHWTA	BGHWF-C		Electroless Nickel Plating
BGHWFA	BGHWTA	BGHWFA-C		Clear Anodize
BGHWFSA	-	BGHWFSA-C	Stainless Steel	-
BGHWFS	BGHWTS	BGHWFS-C		

\* Bearings with Rubber Seals (VV and DD) are all made of steel.

Bearing Accuracy: JISB1514 Class 0

6.3 / (1.6)



Part Number		T		h	d	DH7	Tolerance	dh	B	H	L	L1	L2	G	S	C	d1		
Type	Bearing No.	Selectable	1mm Increment Range (1)	1mm Increment Range (2)															
T Selectable, h Configurable BGHWFB BGHWF BGHWFA BGHWFSA BGHWFS	606	25 35			6	17	+0.018 0	13	6	h+13	47	35	23						
	626	25 35	22~34	36~50	15~30	19	+0.021 0	15	6	h+14	49	37	25						
	608	25 35				22		18	7	h+15	53	41	29						
	628	25 35				24		20	8	h+16	56	44	32						
	6900	25 40			15~40	22		19	6	h+15	53	41	29						
	6000	25 40				10		22	8	h+17	58	46	34		6	10			5.5
	6200	30 40	22~39	41~50		30		24	9	h+19	62	50	38						
	6901	25 40			20~40	24		21	6	h+16	56	44	32						
	6001	25 40				12		24	8	h+18	60	48	36						
	6201	30 40	22~39	41~60		32		26	10	h+20	64	52	40						
6902	25 50			20~50	28	25		7	h+18	60	48	36							
T Selectable, h Configurable, C Chamfered BGHWFB-C BGHWF-C BGHWFA-C BGHWFSA-C BGHWFS-C	6002	30 50			15	32	+0.025 0	28	9	h+20	68	54	40						
	6202	35 50	25~49	51~60		35	+0.025 0	29	11	h+22	72	58	44						
	6903	25 50			25~50	30	+0.021 0	27	7	h+19	64	52	38						
	6003	30 50				17	35	+0.025 0	31	10	h+22	70	56	43		7	15		
	6203	35 50	25~49	51~70		40	34		12	h+24	76	62	49						
6904	35 50				37	34	9		h+23	73	59	45							
T, h Configurable BGHWTB BGHWTA BGHWTS	6004	40 50	30~49	51~80	30~60	20	42	+0.030 0	36	12	h+25	82	66	50					
	6204	45 50				47	40		14	h+28	88	72	56		8				
	6005	40 60	34~59	61~80		25	41		12	h+28	96	76	56		10	15	12		
	6205	45 60	37~59	61~90		52	45		15	h+31	102	82	62						
	6006	40 60			40~80	30	55		13	h+32	104	84	64		10	20	12	11	
	6206	50 60	37~59	61~100		62	55		16	h+36	112	92	72						
	6007	50 60	37~65	66~100		62	55		14	h+36	112	92	72		10	20	12	11	
	6207	60 70	45~74	75~100	40~90	35	64		17	h+44	148	118	88		15	25	15	13	
	6008	50 70	42~69	71~100		68	60		15	h+41	122	102	82		10	20	12	11	
	6208	60 80	50~79	81~100	50~100	40	74		18	h+50	160	130	100		15	25	15	13	

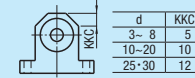
\* No. 623, 624, 605 and 606 are not available for VV (Non-contact Sealed). \* C chamfer cannot be specified for h Selectable Type.

Ordering Example	Part Number			T	h
	Type	Bearing	Seal		
	BGHWFB-C	6901	VV	40	35
	BGHWFSA-	6000	ZZ	25	30

(For BGHWFSA, add a dash before the bearing number, as shown above.)

Bearing No.	Seal	Unit Price																
		T Selectable, h Configurable					T, h Configurable					T Selectable, h Configurable, C Chamfered						
		BGHWFB	BGHWF	BGHWFA	BGHWFSA	BGHWFS	BGHWTB	BGHWTA	BGHWTS	BGHWFB-C	BGHWF-C	BGHWFA-C	BGHWFSA-C	BGHWFS-C				
606																		
626																		
608																		
628																		
6900																		
6000																		
6200																		
6901																		
6001	ZZ																	
6201	(x1.0)																	
6902																		
6002																		
6202	VV																	
6903	(x1.1)																	
6003																		
6203																		
6904	DD																	
6004	(x1.1)																	
6204																		
6005																		
6205																		
6006																		
6206																		
6007																		
6207																		
6008																		
6208																		

Alterations Part Number - T - h - (KCC·KCC·NA)  
BGHWT6000DD - 30 - 35 - KCC

Alterations	Bearings Not Assembled	C2 Chamfer	C Chamfer								
Code	NA	KCC	KKC								
Spec.	Bearings are shipped unassembled to the housing.	C2 chamfer is done on the top edge surface.	C chamfer (45°) is done on both top edge corners. Ordering Code KKC  <table border="1"> <tr> <td>d</td> <td>KCC</td> </tr> <tr> <td>3-8</td> <td>5</td> </tr> <tr> <td>10-20</td> <td>10</td> </tr> <tr> <td>25-30</td> <td>12</td> </tr> </table>	d	KCC	3-8	5	10-20	10	25-30	12
d	KCC										
3-8	5										
10-20	10										
25-30	12										

\* Available for T, h Configurable Type only