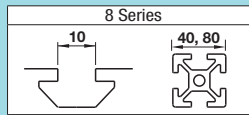
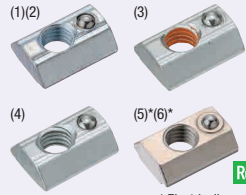


Post-Assembly Insertion Nuts for Aluminum Extrusions with Temporary Holding Function For 8 Series (Slot Width 10mm)



Tightening Torque P552

Post-Assembly Insertion Spring Nuts

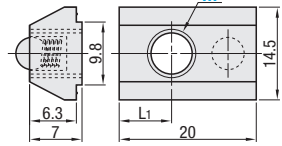


RoHS 10

* Electrically conductive

Type	Material			Surface Treatment
	Main Body	Ball	Spring	
(1)HNT8	S10C	SUS304	SWP-A	Trivalent Chromate
(2)PACK-HNT8	S10C Equivalent	SUS304	SWP-A	Trivalent Chromate
(3)HNT8	S10C	SUS304	SWP-A	Trivalent Chromate
(4)HNT8	S10C	SUS304	SWP-A	Trivalent Chromate
(5)SHNT8*	SUS316 Equivalent (Sintered)	SUS304	SUS304-WP8	-
(6)PACK-SHNT8*	SUS316 Equivalent (Sintered)	SUS304	SUS304-WP8	-

HNT8 (S10C Equivalent)
PACK-HNT8 (S10C Equivalent, 100/pkg.)
HNT8V8 (Thread Locking Adhesive Type, S10C Equivalent)
HNT8Z8 (Thread Locking Resin Coating Type, S10C Equivalent)
SHNT8 (SUS316 Equivalent, Sintered)
PACK-SHNT8 (SUS316 Equivalent, Sintered, 100/pkg.)

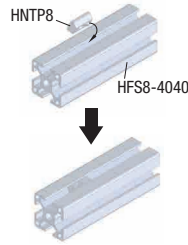
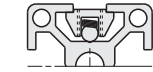


Reference Tightening Torque (N·m)	
M	S10C Equivalent / SUS316 Equivalent (Sintered)
8	23.5



Example

Built-in spring prevents slips. Moves easily in the slot when pressed slightly by hand.



* Does not fall even if the extrusion is placed vertically.

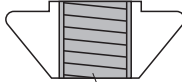
Part Number	M	L1	Unit Price	Volume Discount Rate		
			1 ~ 499 pc(s).	500~749	750~999	1000~1500
HNT8 (S10C Equivalent)	3 4 5 6 8	8				
HNT8V8 (Thread Locking, S10C Equivalent)	8					
HNT8Z8 (Thread Locking, S10C Equivalent)	8					
SHNT8 (SUS316 Equivalent, Sintered)	4 5 6 8	8.5				

Bulk Packages

Part Number	M	L1	Unit Price (1~10 pc(s).)	
			Package Price	Price per Pkg.
PACK-HNT8 (S10C Equivalent)	4 5 6 8	8		
PACK-SHNT8 (SUS316 Equivalent, Sintered)	4 5 6 8	8.5		

100 pcs. per package

Thread Locking Type



Thread locking compound applied inside of the tap.

Nuts with thread locker applied on the inside of tap. Reduce loosening caused by vibration during transportation and operation of equipment.

Thread Locking Adhesive: A microencapsulated anaerobic adhesive prevents thread loosening. Note that it requires a hardening time (72 hours at room temperature 25°C). The adhesive property is lost once loosened.

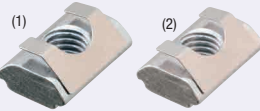
Resin Coating : Resin is coated along the threads. Although the thread locking effect may be less than adhesive type, it can be used repeatedly without hardening time required.

Effect of Thread Locker (Reference)

Loosening torque values are for reference. Difference may occur depending on the clearances between screws and nuts.

	Characteristics	Loosening Torque after Tightening (1st time)	Remarks
Without Thread Locker	-	17.9N·m	-
Thread Locking Adhesive Type	<ul style="list-style-type: none"> Prevents loosening effectively. Thread locking properties are lost once loosened. Requires a hardening time for adhesives (72 hours at room temperature 25°C) after tightening. 	25.6N·m	Test Conditions: Value (HNT8V8-8) measured when a screw is loosened after being tightened at 23.5Nm and being dried for 72 hours at room temperature (25 °C).
Thread Locking Resin Coating Type	<ul style="list-style-type: none"> Can be used repeatedly. (Thread locking effect decreases after repeated use.) Thread locking effect is immediately seen right after tightening. 	20.3N·m	Thread locking effect decreases after repeated use. Loosening Torque at 5 Repeats: 19.1N·m Measurement with HNT8Z8-8

Post-Assembly Insertion Nuts with Leaf Springs

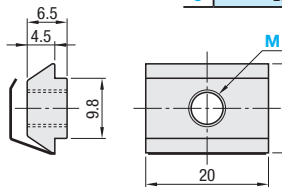


RoHS 10

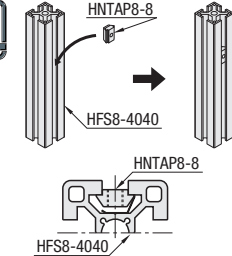
Type	Material			Surface Treatment
	Main Body	Wing Part		
(1)HNTAP8	S10C Equivalent	SUS304	Trivalent Chromate	-
(2)SHNTAP8	SUS304	SUS304	-	-

HNTAP8
SHNTAP8

Reference Tightening Torque (N·m)	
M	S10C Equivalent / SUS304
8	23.5



Example



Welded Leaf Springs prevent the nuts from slipping off even if inserted into the vertically-placed extrusions.

Part Number	M	L1	Unit Price	Volume Discount Rate		
			1 ~ 499 pc(s).	500~749	750~999	1000~1500
HNTAP8	4 5 6 8	8				
SHNTAP8	4 5 6 8					



Ordering Example

Part Number - M
HNTAP8 - 8