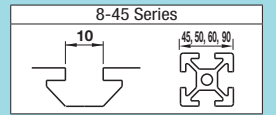


Pre-Assembly Insertion Nuts for Aluminum Extrusions with Temporary Holding Function For 8-45 Series (Slot Width 10mm)



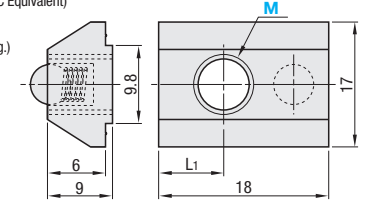
Tightening Torque P552

Pre-Assembly Insertion Spring Nuts



- HNTU8** (S10C Equivalent)
- PACK-HNTU8** (S10C Equivalent, 100/pkg.)
- HNTUV8** (Thread Locking Adhesive Type, S10C Equivalent)
- HNTUZ8** (Thread Locking Resin Coating Type, S10C Equivalent)
- SHNTU8** (SUS304 Equivalent)
- PACK-SHNTU8** (SUS304 Equivalent, 100/pkg.)

Reference Tightening Torque (N·m)	
M	S10C Equivalent, SUS304 Equivalent (Sintered)
8	23.5



Type	Material			Surface Treatment
	Main Body	Ball	Spring	
(1)HNTU8	S10C Equivalent	SUS304	SWP-A	Trivalent Chromate
(2)PACK-HNTU8				
(3)HNTUV8				
(4)HNTUZ8	SUS304 Equivalent	SUS304	SUS304-WP8	-
(5)SHNTU8				
(6)PACK-SHNTU8				

Part Number	M	L1	Unit Price				Volume Discount Rate
			1-499 pc(s)	500-749	750-999	1000-1500	
HNTU8 (S10C Equivalent)	3 4 5 6 8	6					
HNTUV8 (Thread Locking, S10C Equivalent)	8						
HNTUZ8 (Thread Locking, S10C Equivalent)	8						
SHNTU8 (SUS304 Equivalent)	4 5 6 8	5.5					

Ordering Example Part Number - M
HNTU8 - 8

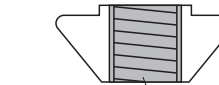
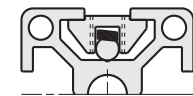
Bulk Packages

Part Number	M	L1	Unit Price (1-10 p(s).)	
			Package Price	Price per Pkg.
PACK-HNTU8 (S10C Equivalent)	4 5 6 8	6		
PACK-SHNTU8 (SUS304 Equivalent)	4 5 6 8	5.5		

Thread Locking Type



Does not fall even if the extrusion is placed vertically. Built-in spring prevents slips. Moves easily in the slot when pressed slightly by hand.



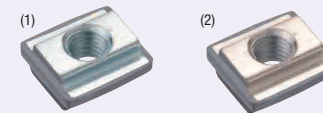
Thread locking compound applied inside of the tap.

Effect of Thread Locker (Reference)

Characteristics	Loosening Torque after Tightening (1st time)	Remarks
Without Thread Locker	17.9N·m	-
Thread Locking Adhesive Type	25.6N·m	Test Conditions: Value (HNTU8-8) measured when a screw is loosened after being tightened at 23.5N·m and being dried for 72 hours at room temperature (25 °C).
Thread Locking Resin Coating Type	21.8N·m	Thread locking effect decreases after repeated use. Loosening Torque at 5 Repeats: 20.3N·m Measurement with HNTUZ8-8

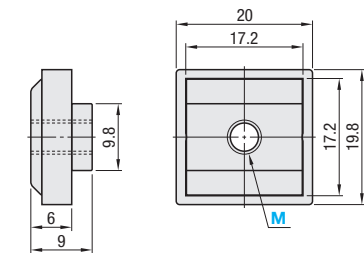
Loosening torque values are for reference. Difference may occur depending on the clearances between screws and nuts.

Stopper Integrated Nuts



HNTE8-45
SHNTE8-45

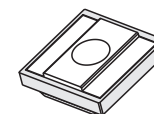
Reference Tightening Torque (N·m)	
M	S10C Equivalent
8	23.5



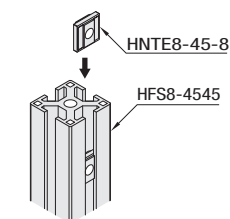
Type	Material			Surface Treatment
	Main Body	Stopper		
(1)HNTE8-45	S10C Equivalent	Polypropylene	-	Trivalent Chromate
(2)SHNTE8-45				

Part Number	M	L1	Unit Price				Volume Discount Rate
			1-499 pc(s)	500-749	750-999	1000-1500	
HNTE8-45	4 5 6 8						
SHNTE8-45	4 5 6 8						

Ordering Example Part Number - M
HNTE8-45 - 8



Integrated Pre-Assembly Insertion Nuts and Stoppers.



The nuts do not slip off even if inserted into the vertically-placed extrusions.