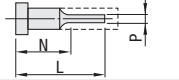


# STEPPED EJECTOR PINS WITH TIP PROCESS



Non JIS material definition is listed on P.1351 - 1352

RoHS

**Tip shape**  
Select from P.163~166

EHSF□A  
EHSJF□A

EHSFE□A  
EHSJFE□A

Range of guaranteed shaft diameter precision (D) (Details P.1301)  
Step R (Details P.1302)

SKH51 equivalent  
58~60HRC  
Range of guaranteed base material hardness (Details P.1303)

To determine the engraving position, key flat cutting is made at the standard 0°

Part Number	Head Thickness	T P
EHSF□A	4mm(T4)	0 -0.005
EHSJF□A	6 · 8mm(JIS)	
EHSFE□A	4mm(T4)	-0.01 -0.02
EHSJFE□A	6 · 8mm(JIS)	

Alterations

Part Number: EHSF8A 6 - L 140.00 - P P5.30 - N N80 - A,V,E,J,W,R,SR,F,G,K,Q (AKC · AWC...etc.)

Quotation

Alteration details P.127

Alterations	Code	Spec.	1Code
	AKC	AKC=1° increments 0 < AKC < 360 No need to designate AKCO	
	AWC	AWC=1° increments 0 ≤ AWC < 360	
	ARC	ARC=1° increments 0 ≤ ARC < 360	Quotation
	ADC	ADC=1° increments 0 ≤ ADC < 360	
	KGA	KGA=1° increments 0 < KGA < 360	
	KGB	KGB=1° increments 0 < KGB < 360	

Alterations	Code	Spec.	1Code
	KAC KBC	Varied width parallel flats cutting D/2 ≤ KAC < H/2 KBC=0.1mm increments only KAC < KBC < H/2 Combination with other key flat cutting not available	
	HC	HC=0.1mm increments D+1 ≤ HC < H	
	HCC	HCC=0.1mm increments D+1 ≤ HCC < H-0.3	Quotation
	TC	TC=0.1mm increments T/2 ≤ TC < T (Dimensions L, F and N remain unchanged.) T-TC ≤ Lmax.-L	
	NHC	Numbering on the head How to order P.128	
	NHN	Automatic sequential numbering on the head How to order P.128	
	NKC	Without key flat cutting Available for tip shapes 6A · 9A · 11A · 12A · 13A · 30A Combination only with HC · HCC · TC · NHC · NHN available.	

Price

Quotation

4mm head		JIS head		Part Number			0.01mm increments		1mm increments						
H	T	H	T	Type		Tip shape	D	L	P	N					
				4mm head	JIS head										
4	4	—	—	EHSF (P <sup>0</sup> <sub>-0.005</sub> )	EHSJF (P <sup>0</sup> <sub>-0.005</sub> )	1A 17A	2	50.00~250.00	1.50 ~ 1.90	N ≥ 15 and 15 ≤ (L-N) ≤ 200					
5						2A 18A	2.5		1.50 ~ 2.40						
6						3A 19A	3		1.50 ~ 2.90						
7						8	6	EHSFE (P <sup>-0.01</sup> <sub>-0.02</sub> )	EHSJFE (P <sup>-0.01</sup> <sub>-0.02</sub> )		4A 20A	3.5	50.00~300.00	1.50 ~ 3.40	
8											5A 21A	4		2.00 ~ 3.90	
9											6A 22A	4.5		2.50 ~ 4.40	
10											7A 23A	5		3.00 ~ 4.90	
11											8A 24A	5.5	50.00~350.00	3.50 ~ 5.40	· N ≥ 15 (T4) · N ≥ 30 (JIS) and 20 ≤ (L-N) ≤ 200
14											9A 25A	6		4.00 ~ 5.90	
15											10A 26A	6.5		4.50 ~ 6.40	
17											11A 27A	7		5.00 ~ 6.90	
						12A 28A	8	6.00 ~ 7.90							
						13A 29A	9	7.00 ~ 8.90							
						14A 30A	9	7.00 ~ 8.90							
						15A 31A	10	7.90 ~ 9.90							
						16A 32A	12	8.90 ~ 11.90							

Select a tip shape 1A~32A P.163~166  
For head thickness JIS less than D4 is T=4, please place the order for head thickness 4mm type of EHSF□A (P<sup>0</sup><sub>-0.005</sub>), EHSFE□A (P<sup>-0.01</sup><sub>-0.02</sub>).

Order

Part Number: L P N In order of A · V · E · J · W · R · SR · F · G · K · Q

Type Tip shape D

EHSF 8A 6 - L 140.00 - P P5.30 - N N80 - R10 - F130.00

Days to Ship

Quotation