

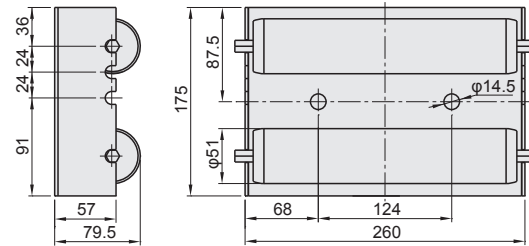
ROLLER PEDESTAL FOR SCREW

■ Application It is used for cleaning and checking the appearance of screws.

■ Roller Pedestal for Screw



M-SHR-4



Material: Pedestal Stainless steel
Roller Steel

Body size (mm)	Part Number	Unit price
		1~3 pcs
175×260	M-SHR-4	Quotation

Please check with our WOS for the purchase order that exceeds the displayed quantity.

Order **Part Number** M-SHR-4 Delivery **Quotation**

ex Example



■ Features

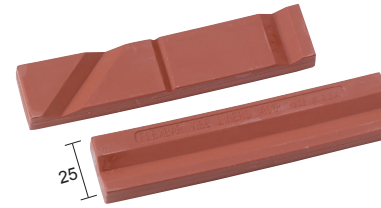
- The installation width of the 3-step adjustable rollers can be adjusted according to the screw diameter. (Supports screw diameters of $\phi 25$ to 200)
- It can be used for cleaning while placing and turning screws. The same applies to checking the appearance of the screw.

SOFT VISE LINER / COPPER VISE CAP

■ Application It is used for fixing screws with a vise.

■ Soft Vise Liner (magnetic type)

M-VJ500



Material: Nylon

■ Features

- It has a horizontal V-groove on one side and a V-groove at 45° in the vertical direction on the other side, allowing objects with uneven shapes to be fixed.
- As it has a magnet, it is easy to install onto a vise.

Length (mm)	Part Number	Unit price
		1~5 pcs
125	M-VJ500	Quotation

Please check with our WOS for the purchase order that exceeds the displayed quantity.

Order **Part Number** M-VJ500 Delivery **Quotation**

ex Example



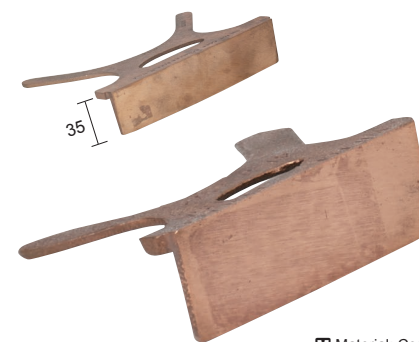
■ How to use

- Mount the vise liner on a vise and fix the flight of the screw to the groove of the vise liner.
- As it is fixed, screw maintenance can be performed by one person.

■ Application It is used for fixing screws with a vise.

■ Copper Vise Cap

M-CVC



Material: Copper

■ Features

- As it is made of copper, it does not easily damage screws.
- As it is fixed, screw maintenance can be performed by one person.
- The copper vise cap is not grooved.

Length (mm)	Part Number		Unit price
	Type	No.	
75	M-CVC	1	Quotation
100		2	
125		3	
150		4	

Please check with our WOS for the purchase order that exceeds the displayed quantity.

Order **Part Number** M-CVC1 Delivery **Quotation**