

ROLLER GUIDE POST SETS FOR DIE SETS

RGBL
(No stopper)



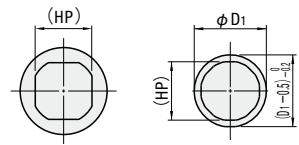
RGSL
(For movable stopper)



RGKL
(For fixed stopper)



RoHS



A square guide is used for D6, D9 and D16. A octagonal guide is used for D80 only.

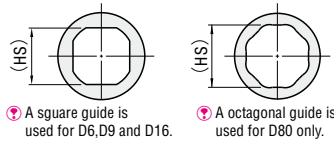
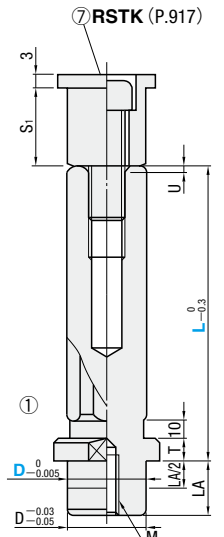
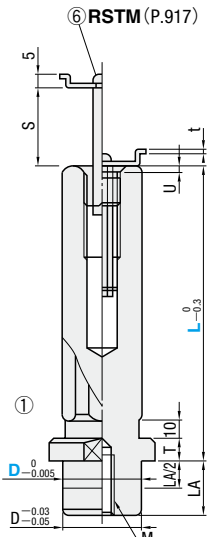
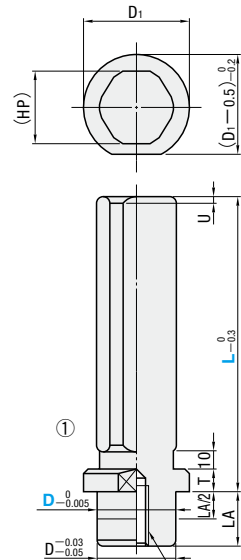
Name	□	⬡
① Guide post	SKS3	60 ~ 62HRC
② Retaining washer	S45C	—
③ Guide bushing	SKS3	60 ~ 62HRC
④ Roller cage	Polyacetal (Roller:SUJ2)	—
⑤ Spring	SWP-B	—
⑥ Movable stopper	S45C SPC-1	—
⑦ Fixed stopper	S45C	—

Roller cage④, spring⑤, movable stopper⑥ and fixed stopper⑦ can be purchased individually.

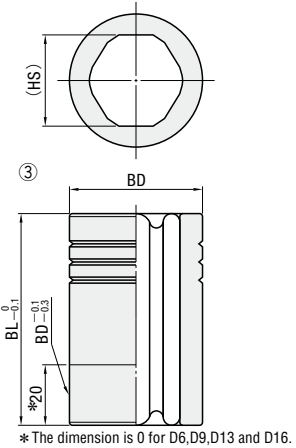
☞ P.917

Catalog No.	Components						
	①	②	③	④	⑤	⑥	⑦
RGBL	○	○	○	○	○	—	—
RGSL	○	○	○	○	○	○	—
RGKL	○	○	○	○	○	○	○

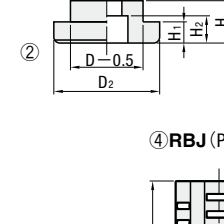
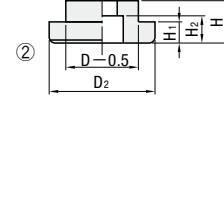
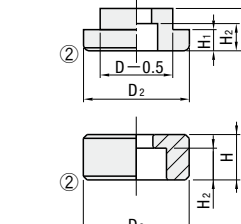
An accessory spring is not provided for D6.



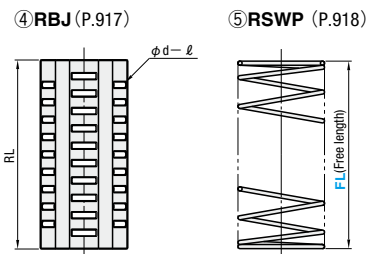
A square guide is used for D6, D9 and D16. A octagonal guide is used for D80 only.



* The dimension is 0 for D6, D9, D13 and D16.



For D6 and D9 only.



Assemble the set in accordance with "Accuracy standards for roller guides and die sets" on page 914.

D	Post														Bushing				
	D1	D2	LA	H	H1	H2	(HP)	T	M	Provided bolt	U	t	S	S1	BD	BL	(HS)	Number of grooves	
6	9	9	6	5	—	3.4	4.7	2.5	M3×6	CB3×6	2.8	—	—	—	13	0	25	7.7	3
9	14	14	9	6	—	4.2	7.9	3.5	M4×8	CB4×8	3.5	—	—	—	17	-0.005	30	10.9	
13	19	17	12	7	3	5.5	11.2	5	M5×8	CB5×10	2.5	—	—	—	23	0	40	15.2	
16	24	22	16	10	4	6.5	14.6	6	M6×10	CB6×10	4.3	1.2	11	14	30	-0.006	40	18.6	4
20	29	28	16	14	7	8.5	18.8	8	M8×20	CB8×15	3.0	1.6	20	23	37	0	60	22.8	
25	35	35	18	16	8	10.5	23.8		M10×20	CB10×20			25	28	45	0	70	27.8	
28	37	36	20	16	8	10.5	26.6	10	M10×25	CB10×20	3.5	2.0	27	30	47	-0.007	75	31.6	
32	42	40	23	18	9	12.5	31.2		M12×30	CB12×25			28	31	55	0	78	36.2	
40	54	50	35	18	9	12.5	39.1	12	M14×30	CB14×30	4.0	5.0	33	36	68	0	92	45.1	
50	64	60	35	20	12	14.5	48.9		M16×35	CB16×40			35	38	80	-0.008	96	54.9	
60	74	72	42	20	12	14.5	59.1	15	M14×30	CB14×30	5.5	—	51	54	95	0	120	67.1	
80	98	105	45	26	13	17.5	79.4		M16×35	CB16×40			51	54	95	0	120	67.1	

Catalog No.	Type	5mm increments		Base unit price 1 ~ 9 sets	
		L	FL	RGBL	RGSL-RGKL
6	RGBL (No stopper)	30 ~ 60	—		
9	RGBL (No stopper)	50 ~ 80	30 ~ 60		
13	RGBL (No stopper)	70 ~ 100	30 ~ 100		
16	RGBL (No stopper)	75 ~ 100	30 ~ 110		
20	RGBL (No stopper)	105 ~ 120	40 ~ 120		
25	RGBL (No stopper)	125 ~ 140	60 ~ 140		
28	RGBL (No stopper)	125 ~ 140	50 ~ 140		
32	RGBL (No stopper)	145 ~ 160	70 ~ 155		

Catalog No.	Type	10mm increments		Base unit price 1 ~ 9 sets	
		L	FL	RGBL	RGSL-RGKL
40	RGBL (No stopper)	120 ~ 140	70 ~ 200		
50	RGBL (No stopper)	150 ~ 170	90 ~ 230		
60	RGBL (No stopper)	180 ~ 200	70 ~ 210		
80	RGBL (No stopper)	210 ~ 230	100 ~ 220		

An accessory spring is not provided for D6. D80 is available for RGBL, RGKL only.

Order Catalog No. — L — FL
RGBL 25 — 120 — FL80

Days to Ship **Quotation**

Price **Quotation**

Alterations Catalog No. — L(LC) — FL — (LAC)
RGBL 20 — LC78 — FL40

Alteration	Code	Spec.	1Code	Alteration	Code	Spec.	1Code	
	LC	Post length L change	Quotation		LAC	LA dimension change LA/2 + 1 ≤ LAC < LA 1mm increments Tap depth is shortened.	Quotation	
		D						1mm increments
		6						30 < LC < 60
		9						50 < LC < 80
		13						70 < LC < 120
		16						75 < LC < 135
		20						75 < LC < 140
		25						95 < LC < 160
		28						95 < LC < 160
		32						115 < LC < 180
40	120 < LC < 220							
50	150 < LC < 250							
60	150 < LC < 250							
80	180 < LC < 280							

Configurable guide post length type (long)

Catalog No.	Type	5mm increments		10mm increments		Base unit price 1 ~ 9 pieces
		LC	FL	FL	FL	
20	RGBL	145 ~ 200	110 ~ 200			Quotation
25	RGBL	165 ~ 200	120 ~ 190			
28	RGBL	165 ~ 200	120 ~ 190			
32	RGBL	185 ~ 240	140 ~ 230			

Order Catalog No. — LC — FL
RGBL 25 — LC200 — FL160

Days to Ship **Quotation**

Price **Quotation**