

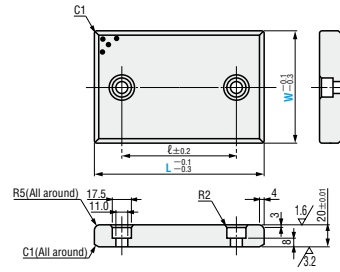
OIL-FREE SLIDE PLATES

— CAST 20mm TYPE · 2 BOLT HOLES / 3 BOLT HOLES / 4 BOLT HOLES —

— 2 bolt holes —
MWF W= 28 ~ 75
MWFT W=100~150



RoHS



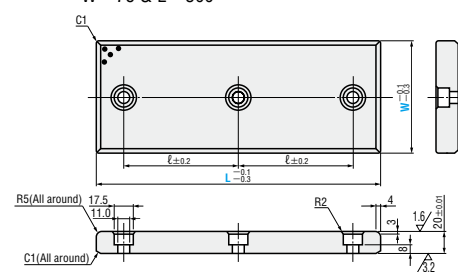
※ For W=28 or 38, the R in the longer direction is R2.

W=75 & L=300

— 3 bolt holes —
MWF W= 75 & L=300



RoHS

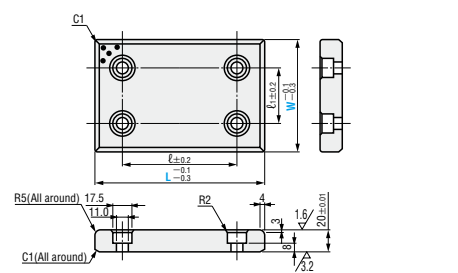


• Slide direction \leftrightarrow
 For W=28 or 38, slide direction is the longer direction (L) only.

— 4 bolt holes —
MWF W= 100~200



RoHS



• The use of initial break-in greasing will make the product more effective.

FC250 Special solid lubricant (embedded)

ℓ	Catalog No.	W	L		
45	— 2 bolt holes — (* 3 bolt holes) MWF	28	75		
50			100		
75			125		
100			150		
150			200		
45		38	28	75	
50				100	
75				125	
100				150	
150				200	
45		48	38	75	
50				100	
75				125	
100				150	
150				200	
45	58	48	75		
50			100		
75			125		
100			150		
150			200		
25	75	58	75		
50			100		
75			125		
100			150		
150			200		
200	100	75	250		
100*			300		
50			100	100	100
75					125
100					150
150	200				
200	250				
200	125	100	300		
75			125		
100			150		
150			200		
200			250		
200	150	125	300		
75			125		
100			150		
150			200		
200			250		
250	200	150	300		
250			300		

ℓ	ℓ ₁	Catalog No.	W	L	
50	50	— 4 bolt holes — MWF	100	100	
75				125	
100				150	
150				200	
200				250	
200	50		100	100	300
75					125
100					150
150					200
200					250
200	100		150	100	150
150					200
200					250
250					300
150					200
200	150	200	150	200	
250				250	
250				300	
250				300	
250				300	

Order Catalog No. W — L
MWF 75 — 100
MWFT 125 — 200

Days to Ship **Quotation**

Price **Quotation**

■ Shims for oil-free slide plates P.1142

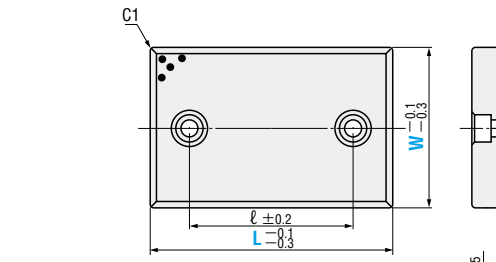
OIL-FREE SLIDE PLATES

— COPPER ALLOY 20mm TYPE · 2 BOLT HOLES / 4 BOLT HOLES —

— 2 bolt holes —
SEW W= 28 ~ 75
SEWT W=100 ~ 150



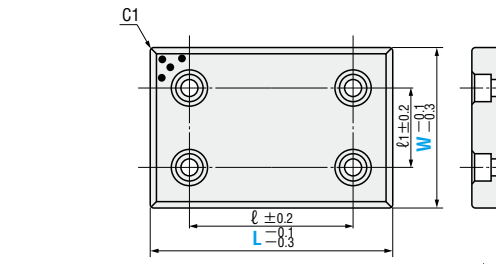
RoHS



※ For W=28 or 38, the R in the longer direction is R2.

— 4 bolt holes —
SEW W=100 ~ 150

RoHS



• Slide direction \leftrightarrow
 For W=28 or 38, slide direction is the longer direction (L) only.

• The use of initial break-in greasing will make the product more effective.

■ Copper alloy
 ■ Special solid lubricant (embedded)

ℓ	Catalog No.	W	L		
45	— 2 bolt holes — SEW	28	75		
50			100		
100			150		
45			38	28	75
50					100
100		150			
150		200			
200		250			
45		48	38	75	
50				100	
75				125	
100				150	
150				200	
45		58	48	75	
50				100	
100	150				
150	200				
200	250				
25	75	58	75		
50			100		
75			125		
100			150		
150			200		
50	100	75	100		
75			125		
100			150		
150			200		
200			250		
200	125	100	300		
75			125		
100			150		
150			200		
200			250		
200	150	125	300		
200			350		
100			150		
150			200		
200			250		

ℓ	ℓ ₁	Catalog No.	W	L	
50	50	— 4 bolt holes — SEW	100	100	
75				125	
100				150	
150				200	
200				250	
200	50		100	100	300
75					125
100					150
150					200
200					250
200	100		150	100	150
100					200
150					250
200					300
200					350
200	150	200	150	200	
150				250	
200				300	
200				350	
200				400	

Order Catalog No. W — L
SEW 75 — 125
SEWT 150 — 200

Days to Ship **Quotation**

Price **Quotation**

■ Shims for oil-free slide plates P.1142